

Ball Screw

RSK R 16 05 C5 - 1000 - P0 - D1B - E2F - N

Nut and screw type

- SFYA
- SFK
- RSC
- RSK
- FSC
- FSE
- FDC

Direction of helix

- R = Right
- L = Left

Shaft diameter (mm)

06-63

Lead (mm)

01-50

Lead accuracy

- C5 (standard)
- C7

Total length (mm)

Clearance nut

- P0 = Standard clearance
- P1 = Reduced clearance
- P2 = Light preload

Machining code - first end

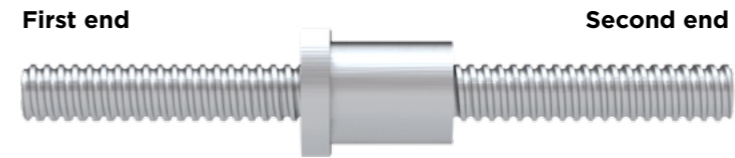
See codes below

Machining code - second end

See codes below

Option keyway

- N = with keyway
- Without, leave blank
- Only for machining end D1 and E2



Machining codes:

- | | | |
|--------------------------|-----|-------|
| D0 = Cut/no machining | E1F | D2F |
| A = Annealing | E2F | E1WF |
| Z = According to drawing | D1B | E2WF |
| E1B | D2B | E1WFF |
| E2B | D1F | E2WFF |

See further information under section **Standard End Journals**.