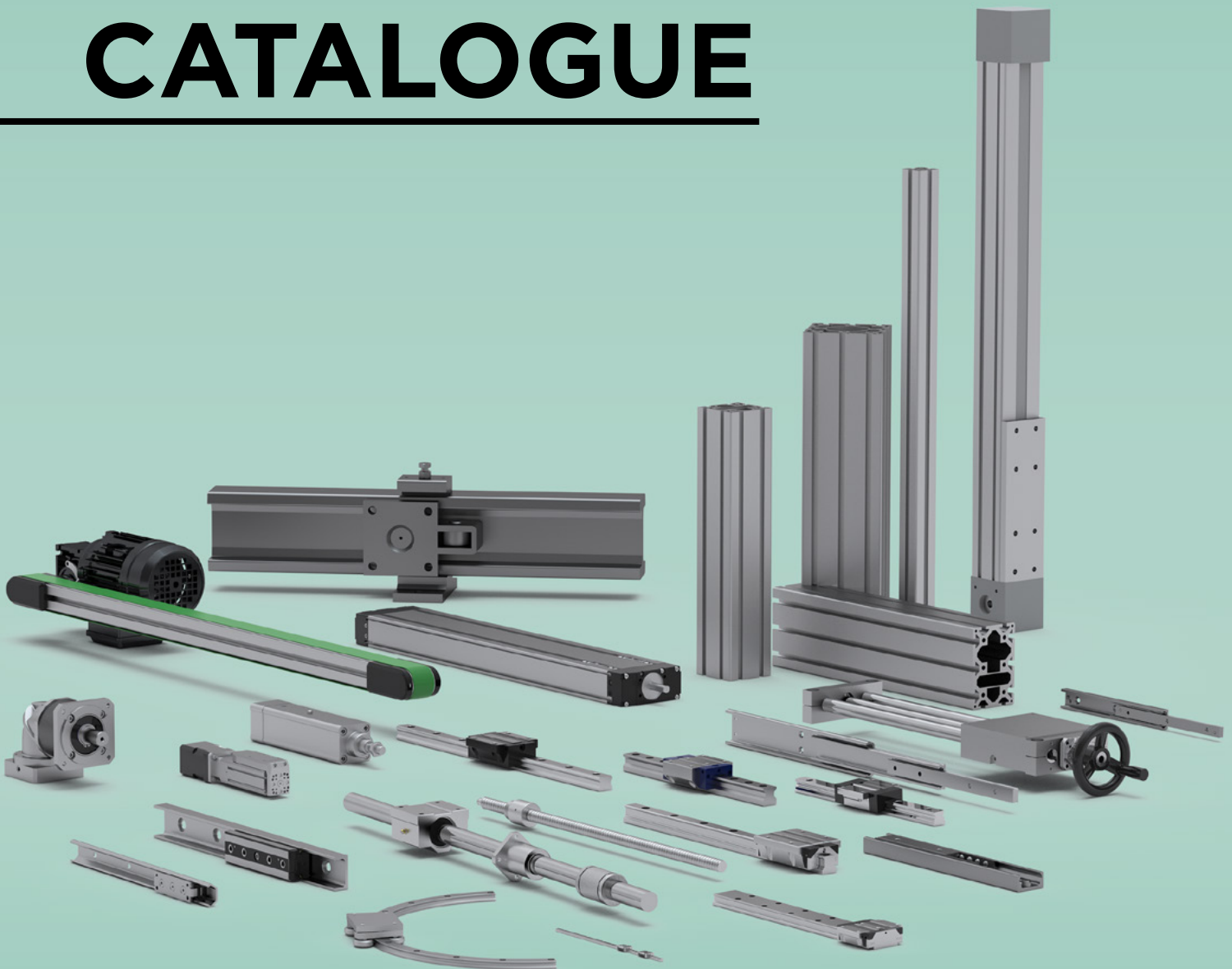


PRODUCT CATALOGUE



Information in this document is subject to change. Owing to continued product development, Rollco reserves the right to make alterations without prior notice. Every care has been taken to ensure the accuracy of the information, but no liability can be accepted for any errors or omissions.

All information and content included in this document, such as text, and images, are property of Rollco. Any reproduction, even partial, is allowed only by written permission by Rollco.



Index

THIS IS ROLLCO	5
LINEAR RAIL SYSTEMS WITH ROLLERS	7
COMPACT RAIL	8
PRODUCT OVERVIEW	8
PRODUCTS	11
C-RAIL	13
PRODUCT OVERVIEW	13
PRODUCTS	14
U-RAIL	15
PRODUCT OVERVIEW	15
PRODUCTS	16
CURVI LINE	19
PRODUCT OVERVIEW	19
PRODUCTS	20
LINEAR RAIL SYSTEMS WITH BALLS	21
LINEAR RAIL HRC/ARC/ERC	22
PRODUCT OVERVIEW	22
PRODUCTS	24
LINEAR RAIL SBI	27
PRODUCT OVERVIEW	27
PRODUCTS	28
LINEAR RAIL WRC	30
PRODUCT OVERVIEW	30
PRODUCTS	31
LINEAR MINIATURE GUIDES	32
PRODUCT OVERVIEW	32
PRODUCTS	34
LINEAR RAIL ALUMINIUM	35
PRODUCT OVERVIEW	35
PRODUCTS	36
LINEAR ROLLER GUIDES	37
PRODUCT OVERVIEW	37
PRODUCTS	38
TELESCOPIC RAILS	39
TELESCOPIC RAIL LIGHT	40
PRODUCT OVERVIEW	40
PRODUCTS	41
TELESCOPIC RAIL HEAVY	42
PRODUCT OVERVIEW	42
PRODUCTS	43
EASYSLIDE	44
PRODUCT OVERVIEW	44
PRODUCTS	45

BALL SCREWS, LINEAR BALL BEARINGS & STEEL SHAFTS	47
BALL SCREWS	48
PRODUCT OVERVIEW	48
PRODUCTS	49
LINEAR BALL BEARINGS & STEEL SHAFTS	51
PRODUCT OVERVIEW	51
PRODUCTS	52
LINEAR UNITS	55
LINEAR UNIT RHL	56
PRODUCT OVERVIEW	56
PRODUCTS	57
LINEAR UNIT QME	58
PRODUCT OVERVIEW	58
PRODUCTS	59
LINEAR UNITS CT & MT	60
PRODUCT OVERVIEW	60
PRODUCTS	61
ELECTRIC CYLINDERS & SLIDERS	63
MCE & MSCE MINI ELECTRIC CYLINDERS & SLIDERS	64
PRODUCT OVERVIEW	64
PRODUCTS	66
PNCE ELECTROMECHANICAL CYLINDERS	68
PRODUCT OVERVIEW	68
PRODUCTS	70
PLANETARY GEARBOXES	73
PRODUCT OVERVIEW	73
PRODUCTS	74
ALUMINIUM APPLICATIONS	75
ALUMINIUM PROFILE SYSTEM	76
PRODUCT OVERVIEW	76
PROFILES	78
FASTENERS & CONNECTORS	79
ACCESSORIES	80
ADDITIONAL PRODUCTS	81
BELT CONVEYORS	82
PRODUCT OVERVIEW	82
PRODUCTS	83
BELT CONVEYOR EXAMPLES	85

THIS IS ROLLCO

Rollco specialises in products for linear motion and automation solutions. We have a wide range of products and high technical expertise. But what really makes us unique is our customer focus.

Our goal is to assist you in the best way possible, whether it is about finding the right product, providing quick technical advice or fast deliveries. That is what drives us to find the ideal solutions and to constantly improve our products and expertise.

We have a large warehouse, which means that you can get components directly from us, sometimes as soon as the following day. Our rapid response time gives you a simple and smooth process.

We are present in Sweden, Denmark, Norway, Finland and Taiwan. Our head office with workshop and warehouse is located in Helsingborg, Sweden.



YOUR PARTNER IN PERFECTION

A large part of our business is to develop and design unique customer solutions for linear movement and automation. Our technical experts will team up with you to create the best possible solution based on your specific requirements.

In our workshops in Sweden and Denmark we then assemble the designs. One of the most frequent solutions is aluminium stand with integrated linear units. We also design and build fully customized solutions with linear rail guides and ball screws.

We have 2D and 3D CAD files of all our standard products and we are happy to assist with design proposals. Don't hesitate to contact us! We give you speedy access and fast answers to help you overcome your challenges.

THE ROLLCO WAY

The most important assets at Rollco are the people. Our philosophy is that we through teamwork and fellowship create a good working environment. We have a unique customer focus, which can only come from dedicated and motivated people.

Like all Addtech companies we aim to run a sustainable business. This does not only mean that we have to meet the required standards and regulations on the market, but also to have a sustainability mindset when it comes to working conditions, ethics and the environment.

We believe that this creates added value for our customers, suppliers, employees and the community we operate in.



LINEAR RAIL SYSTEMS WITH ROLLERS

Our product range of linear rails include different profiles and types of sliders and are used in a wide range of industrial applications.



COMPACT RAIL

System of guide rails and roller sliders with radial bearings. The system allow system designs that compensates for both deviation in parallelism and height offset and therefore often reduce the overall cost by minimized machining and installation time. The rails are surface hardened steel and the sliders zinc-plated steel.



C-RAIL

Economic roller based linear guiding which also offers a smooth and quiet operation. Available in zinc plated or stainless steel. The stainless version makes it versatile in demanding environments with water and humidity. The non-hardened rail makes C-Rail less suitable for heavy duty operation if compared to Compact Rail.



U-RAIL

A robust system which compensates for alignment errors and can be welded on existing constructions. The rails are available in steel or stainless steel. Rollers in steel, chrome-plated steel, stainless and for high speed, lined with hard PU or PA.



CURVI LINE

A system for curved rails with constant or variable radius. The system is customised for each specific application. Available in zinc plated or in stainless steel.



COMPACT RAIL

PRODUCT OVERVIEW

It simplifies the design, improves the performance and reduces the application cost with 8 main advantages.



Self-aligning system

- Select the most suitable structure for your project
- Avoid machining the mounting surface
- Reduce the assembly time



Up to $\pm 2^\circ$ with K+U rails



Up to $\pm 2^\circ$ with K+U rails



Up to 3.9 mm with T+U or K+U rails

Configurations of rails and rollers



Rails with different geometries + single row ball bearings



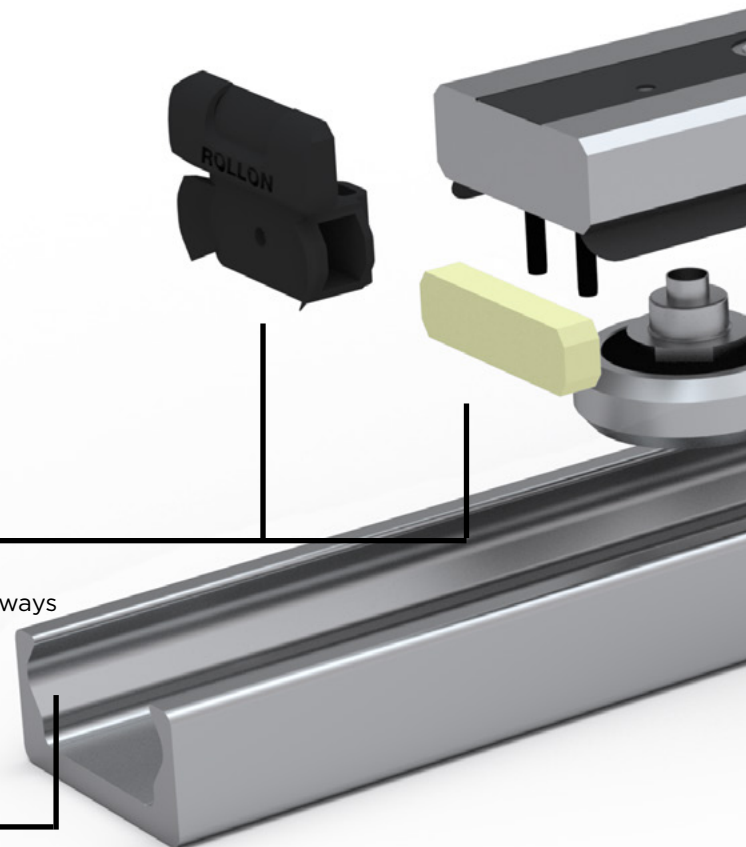
Optimal reliability in dirty environments

Lateral sealing for a greater protection against contaminants
New self-centering wiper for an optimal cleansing of the raceways



Long lifetime

Induction hardened raceways with 1.2 mm effective depth and hardness between 58 and 62 HRC





Resistant to corrosion

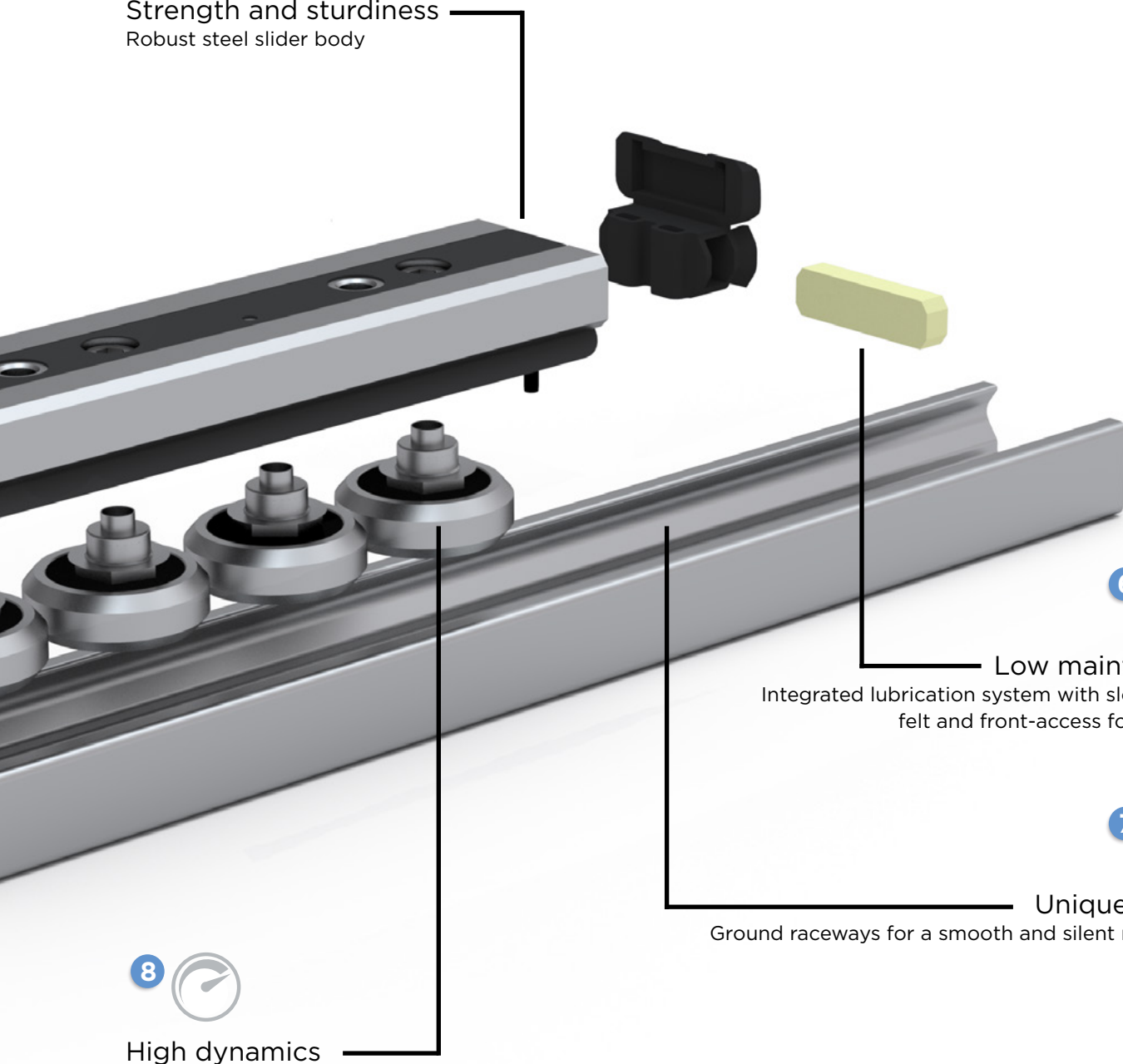
Different surface treatments make Compact Rail reliable even in the harsher environments

- Indoor applications: zinc-plating ISO 2081. Also available with electro-painted black finishing
- Corrosive environments (humidity): electrolytic plating with high resistance passivation alloy
- Corrosive environments (acidic or basic): nickel-plating



Strength and sturdiness

Robust steel slider body



Low maintenance

Integrated lubrication system with slow release felt and front-access for greasing



Uniquely quiet

Ground raceways for a smooth and silent movement

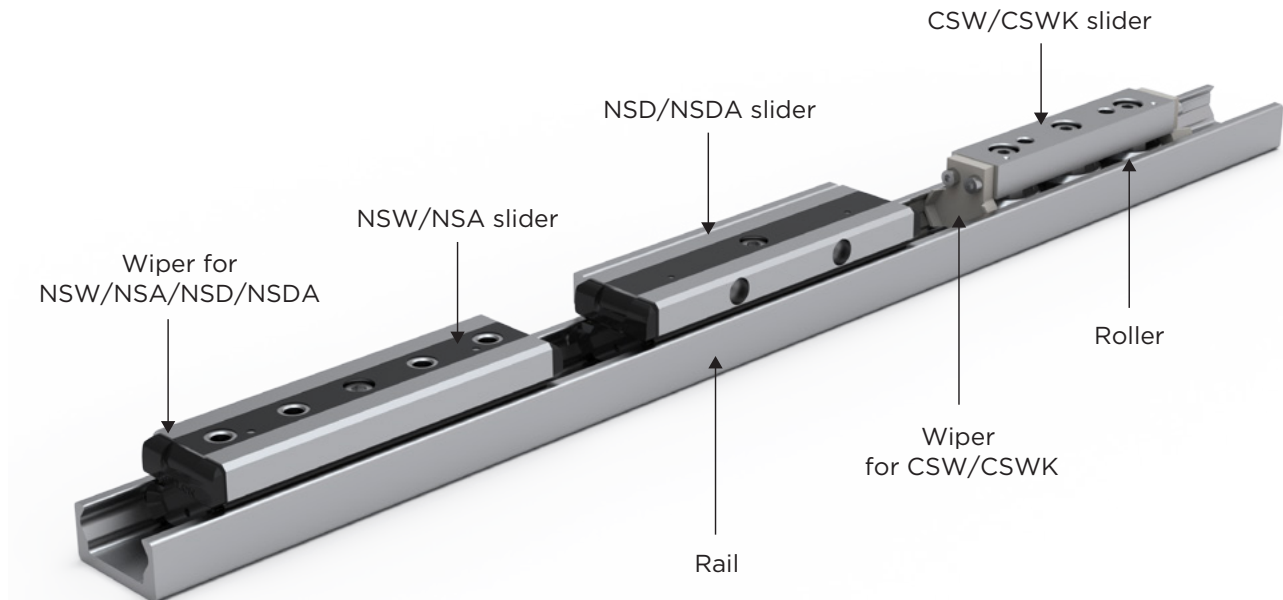


High dynamics

Speed up to 9 m/s. Acceleration up to 20 m/s²



Self-aligning system with rails and robust steel sliders



Compact Rail is a product family of guide rails including roller sliders with radial bearings. These rollers roll in the internal, induction hardened, and ground raceways of a C-profile. Base material is made from cold-drawn roller bearing carbon steel.

Compact Rail consists of three product series: the fixed bearing rail (T), the compensating bearing rail (K) and the floating bearing rail (U). They can be combined to create self-aligning systems to compensate misalignment errors on two planes: axially up to 3.9 mm and radially up to 2°.

All products are available in zinc plated surface, whilst other treatments for higher corrosion resistance are as options. There are four different sizes of guide rails and many different versions and lengths of the roller sliders, differing on the size and load requirements.

CHARACTERISTICS

- Compact size
- Corrosion resistant surface for long service life
- Not sensitive to dirt due to internal raceways and large rollers
- Hardened and ground raceways
- Self-aligning in two planes
- High operation speeds
- Wide temperature range
- Easy adjustment of slider in the guide rail
- Quieter than recirculating ball systems
- Different anticorrosion treatments available for rails and slider bodies

APPLICATION AREAS

- Cutting machines
- Medical technology
- Packaging machines
- Photographic lighting equipment
- Construction and machine technology (doors, protective covers)
- Robots and manipulators
- Automation
- Handling
- Special vehicles

Note! Compact Rail products are for sale on selected markets. Please contact us for more information.



PRODUCTS



Slider NSW/NSA

Robust zinc plated steel slider with roller bearings, self-centering heads with wipers, longitudinal seals to protect the internal components and a top sealing strip to prevent accidental tampering of the fixed rollers. The slider body is accurately finished with matte longitudinal edge chamfer and a shining ground flat surface. It is available for all sizes, configurable with up to six rollers depending on the load requirement.



Slider NSD/NSDA

Constructed as the NSW/NSA-slider with mounting holes parallel to the direction of preferred loading. It is available for sizes 28 and 43, with three or five rollers, depending on load case and load direction set with the corresponding configuration.



Slider CSW/CSWK

Constructed with zinc-plated steel body and sturdy wipers made of polyamide. Available for all sizes. Depending on the load requirement, slider is configurable with up to six rollers.



Rollers CPN-CPA

Prismatic roller for T- and U-rail. Available individually in all sizes as eccentric or concentric rollers. Optionally available with splash-proof rubber seal 2RS or with steel cover disc 2Z.



Rollers CRPN-CRPA

Crowned roller for K-rail. Available individually in all sizes as eccentric or concentric rollers. Optionally available with splash-proof rubber seal 2RS or with steel cover disc 2Z.



T-Rail

Fixed rails used as the main load carrier in radial and axial forces.



U-Rail

Floating rails are used for load carrier of radial forces and, in combination with the fixed bearing T-rail or compensation K-rail, as a support carrier for occurring moment loads.



K-Rail

The compensation rails are used for the load carrier of radial and axial forces. Tolerance compensation in two planes in combination with the U-rail.



ZK-WNS Wipers

Wipers for NSW/NSA/ NSD/NSDA. The NS-slider heads are equipped with special slow release felt pads and are free to rotate with respect to the slider body, so that the felts are always in contact with the raceways to ensure a perfect lubrication.

**ZK-WCS Wipers**

Wipers for CSW/CSWK to keep the raceways free of contamination and ensure a longer service life.

**Joining rail alignment fixture**

For installation of joined rails to precisely align the rails with each other.

**Fixing screws**

For rails with counter-bored holes.

**Oiling syringe**

For lubrication of the sliders NSW/NSA/NSD/ NSDA

See our website for technical specifications and other information.

Scan the QR code on the top of the page to go to the website.

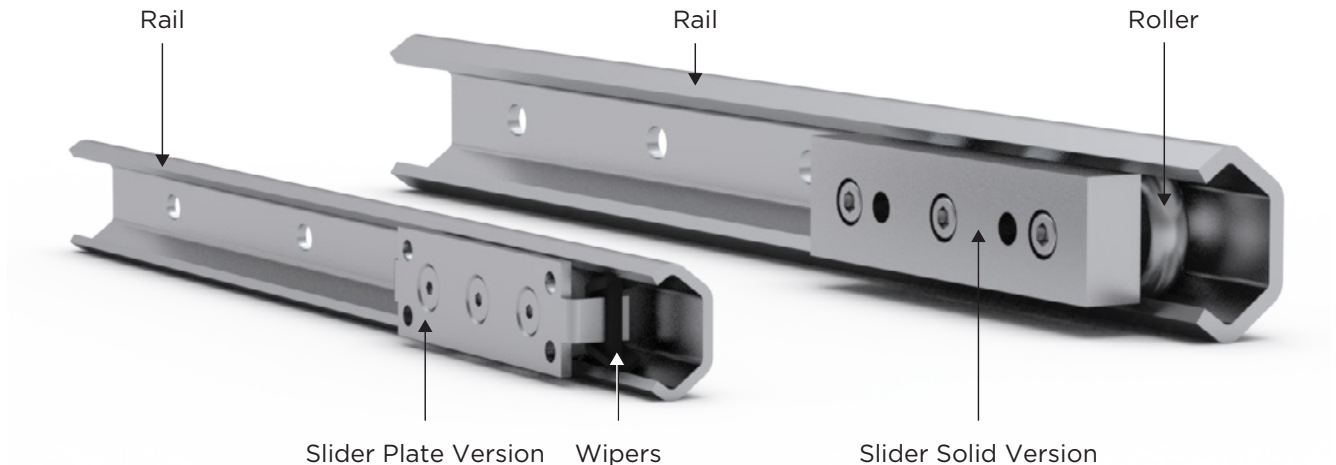
Note! Compact Rail products are only for sale on selected markets.

Please contact us for more information.



C-RAIL

PRODUCT OVERVIEW



Rollco C-Rail compact and quiet linear guide with low friction. The system is suitable for applications in dusty environments where precision is not the main factor. It is a simple and cost-effective linear bearing. The stainless steel version is perfect for applications where corrosion resistance is important.

C-Rail has internal raceways to guarantee the best level of protection against impurities, debris and external abuse. The sliders have three radial ball bearings with double rubber seals and are lubricated for life. These rollers have eccentric pivots that allow adjusting the preload when mounted inside the rail.

C-Rail is available in zinc plated or in stainless steel AISI304 version. For AISI316, please contact Rollco. The stainless steel version (SXTE) is ideal for applications where water, temperature fluctuations or high temperatures occur.

The system is available in three different sizes, 20, 30 and 45. The rails are available in lengths up to 6 m.

TECHNICAL DATA

- Max. temperature: 100°C (212°F)
- Speed: 1.5 m/s

APPLICATION AREAS

- Food industry: production and packing of food/beverages
- Chemical and environment industry: water treatment devices
- Medical industry: analysis equipment
- Transport industry: sliding doors and boat constructions
- Power industry: boilers and house fireplaces
- Mechanical devices: car wash and automatic gates
- Machine tools: protective panel movement

STAINLESS STEEL VERSION

- Corrosion resistant even after scratching, etching and chipping
- Can be used in washdowns
- Resistant to high temperatures and temperature changes
- No coatings that could flake or chip
- Low coefficient of friction
- Ecological and recyclable materials



PRODUCTS



Slider Plate Version

Stainless steel body with wipers and with either standard steel or stainless steel rollers.



Slider Solid Version

Stainless steel body with either standard steel or stainless steel rollers.



Rollers for Plate Version

Concentric and eccentric rollers for plate version slider. Available in standard or stainless bearing steel.



Rollers for Solid Version

Concentric and eccentric rollers for solid version slider. Available in standard or stainless bearing steel.



Rail

Standard zinc plated steel or stainless steel C-Rail.



Button Head Screws (ISO 7380)

Zink plated and stainless steel screw for C-Rail.

**See our website for technical specifications and other information.
Scan the QR code on the top of the page to go to the website.**



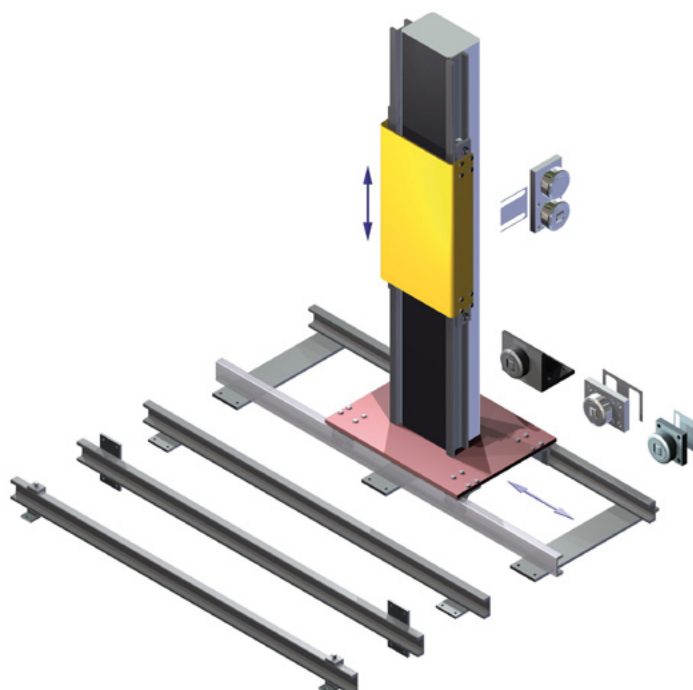
U-RAIL

PRODUCT OVERVIEW

U-Rail is robust system where precision is secondary. The profiles can be welded on existing constructions and the rollers can be delivered with or without assembly plates. The U-Rail system is designed to compensate for deviations in parallelism.

U-rail is available in three different sizes in steel or stainless steel AISI 304, which makes it suitable for applications in very demanding environments. The profile material is easy to weld and offers high wear resistance and fine grained structure.

For smaller loads or high speed, it is possible to get polyamide rollers for a quieter and smoother operation.



TECHNICAL DATA

Tolerances

The bearings specified in this catalog are manufactured according to DIN 620, class PN (PO), values load capacity are according to ISO 76 and 281/1.

Materials

- Outer rings: Case-hardened steel 20CrMnTi, surface hardened at 60 to 62 HRC.
- Inner rings: Bearing steel UNI 100Cr6, hardened at 60 to 62 HRC.
- Welding bolts: S355 J2G3, easy weldable, bolt diam. range of tolerance 0/-0.05 mm.
- Profiles: Material 18 MnNb6

Sealing

ZRS-seal. Bearing with labyrinth/elastomer-seal, lubricated for lifetime.

Screws

TORX / Screw locking DIN 267-28 Polyamid coating.

Service Temperature

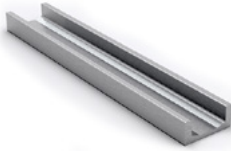
Generally from - 40 °C to +120 °C, for short time useable to +150 °C, high temperature bearings to +250 °C.

Important Information

The standard rollers have a convex contact surface. Bearings with diameter < 100 mm have to be dismantled before welding. To avoid damage of the bearings we strongly recommend always to order the rollers with mounting plates.

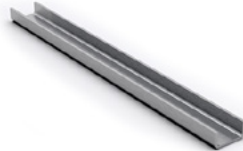


PRODUCTS



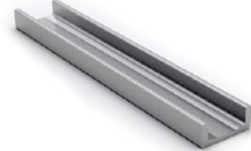
UP---.0700

Standard U-Profile, good weldability and available in various surfaces. High load capacity, robust and simple. Suitable for high radial and axial loads.



UP---.0730

Light U-Profile, can be welded or screwed on. High manufacturing precision, low weight and great damping properties. Ideal for high speed and quiet applications.



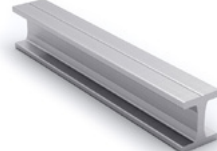
XUP---.0700

Heavy U-Profile, extra strong and durable. Very high load capacity, robust and precise.



UP---.0780

Stainless steel U-Profile (material 1.4301). Ideal for applications requiring a high chemical resistance to alcohol, salts, greases and certain dilute acids and alkaline solutions.



IP---.0800

Standard I-Profile, good weldability and available in various surfaces. High load capacity, robust and simple. Suitable for high radial and axial loads.



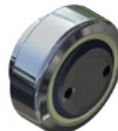
TR---. 0200

Standard roller with fixed axial bearing. Easy installation, low maintenance and easy to replace.



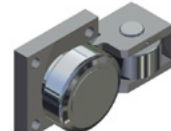
TR---.0300

Standard roller with adjustable axial bearing. Easy installation and adjustment, low maintenance and easy to replace.



TR---.0360

Standard roller with adjustable oil-amide slider. Easy installation and low maintenance. Highly loadable in the axial direction when idle.

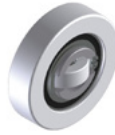


STR---.6200

Heavy-duty roller with external axial bearing, welded to a mounting plate. Optimum use in structures with projecting loads. Axial bearing with 40% higher load capacity.

**PAS ---.0360**

Polyamide roller with oilamide sliding block. Suitable for highly dynamic applications with low axial loads. High abrasion and chemical resistance and low friction.

**PAS ---.0200**

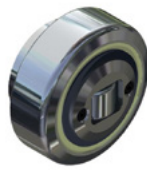
Polyamide roller with fixed axial bearing. Suitable for highly dynamic applications with low axial loads. High abrasion and chemical resistance and low friction.

**PSAS ---.6200**

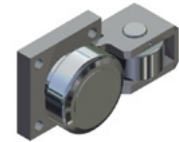
Polyamide heavy-duty with external axial bearing, welded to a mounting plate. Suitable for high axial load applications. High abrasion and chemical resistance and low friction.

**XTR---.0200**

Extra strong roller with fixed axial bearing. Up to 60% higher load capacity. High accuracy, strength and long service life. Easy installation, adjustment and maintenance.

**XTR---.0300**

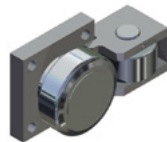
Extra strong roller with fixed axial bearing. Up to 60% higher load capacity. High accuracy, strength and long service life. Easy installation, adjustment and maintenance.

**XSTR---.6200**

Extra strong heavy duty roller with external axial bearing, welded to a mounting plate. Optimum use in structures with projecting loads. Axial bearing with 35% higher load capacity.

**TR---.0390**

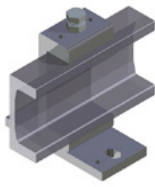
Stainless steel roller adjustable oilamide slider. Protected against corrosion. Easy installation and adjustment, low maintenance and easy to replace.

**STR---.4200**

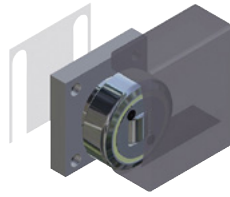
Heavy-duty stainless roller,. Protected against corrosion, made completely of stainless steel. Optimum use in structures with projecting loads. Lubricated for life.

**SFE---.5200**

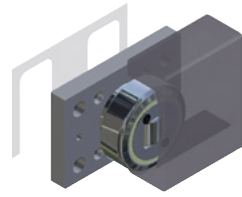
Heavy duty guideway unit axial bearing with 40 % higher load capacity. Consists of one load bearing and one eccentric bearing fastened on a mounting plate. Excentric bearing adjustable to minimize clearance.

**KS---.3650**

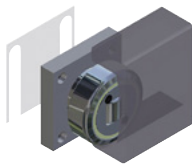
Clamp console for U-profiles and precision U-profiles from size 050 up to 090. Used to facilitate assembly of the guide profiles. It features a short assembly time and easier exchange of guide profiles.

**BQ---.1000**

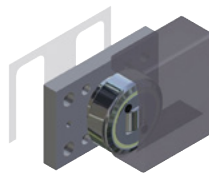
Fixing element square. Weld to any of the guide bearings.

**BR---.1100**

Fixing element rectangular. Weld to any of the guide bearings.

**BQ---.4000**

Stainless fixing element square. Weld to any of the guide bearings.

**BR---.4100**

Stainless fixing element rectangular. Weld to any of the guide bearings.

**Distance Sheet BQ**

Square distance sheet of steel or stainless steel. Optimal for adjustment of welded-in guide bearings.

**Distance Sheet BR**

Rectangular distance sheet of steel or stainless steel. Optimal for adjustment of welded-in guide bearings.

**Distance Ring**

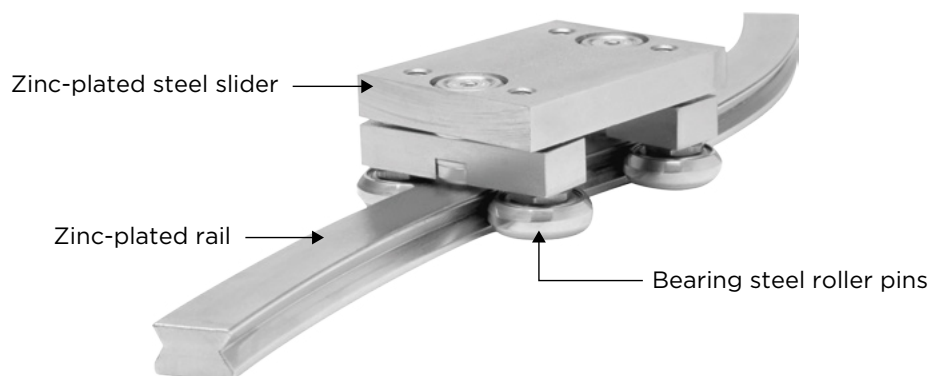
For adjustment of the axial clearance of adjustable guide bearings.

**See our website for technical specifications and other information.
Scan the QR code on the top of the page to go to the website.**



CURVI LINE

PRODUCT OVERVIEW



Curvi Line is a rail system with curved rails intended for all non-linear special movements. The system is customised for each specific application, resulting in a highly flexible and economical solution.

Curvi Line is available in two rail widths and zinc plated or in stainless steel. Rails can be ordered with constant or variable radius according to customer requirements. The use of standard radii is recommended.

Constant radii

The layout of CKR guide rails corresponds to a partial section of a complete circle.

Variable radii

CVR curvilinear rail is a variable combination of various radii and straight partial pieces.

The slider, with either three or four rollers, maintains the desired preload over the entire rail layout. Moving roller mountings and the paired application of concentric and eccentric roller pins ensures uniform running even with a complex rail layout.

CHARACTERISTICS

- Straight and curved sections in one continuous rail possible.
- Sliders with four rollers arranged in pairs maintain the preload over the entire rail length.
- Customised according to application requirements.
- Available in stainless steel.

APPLICATION AREAS

- Packaging machines
- Railway car interior doors
- Special extensions
- Shipbuilding (interior doors)
- Food industry



PRODUCTS



Slider CCT

Slider with radial ball bearing rollers. Moving roller mountings and the paired application of concentric and eccentric roller pins ensures uniform running even with a complex rail layout.



Rail CKR/CVR

Rail with constant radius or variable radius with straight sections. Available in two widths, 16 mm and 23 mm.

**See our website for technical specifications and other information.
Scan the QR code on the top of the page to go to the website.**

**Note! Curvi Line products are only for sale on selected markets.
Please contact us for more information.**

LINEAR RAIL SYSTEMS WITH BALLS

Rollco linear rails can be used for the majority of linear motion applications. The linear rails can be supplied with different types of surface treatments and be customised with sealings suitable for various environments.



LINEAR RAIL HRC/ARC/ERC

- Size 15-55
- Load capacity ≤ 220000 N
- Available with corrosion resistant coating
- Bottom mounted or counterbore rails
- Ball chain (option) for quiet operation



LINEAR RAIL SBI

- Size 15-65
- Load capacity ≤ 350000 N
- Available with corrosion resistant coating, Raydent
- Bottom mounted or counterbore rails



LINEAR RAIL WRC

- 2 sizes
- Load capacity ≤ 30000 N
- Wide rail guides with optional ball chain
- Available with corrosion resistant coating
- Bottom mounted or counterbore rails



LINEAR RAIL ALUMINIUM

- Size 15-25
- Bottom mounted or counterbore rails
- Corrosion resistant
- Low weight



LINEAR MINIATURE GUIDE

- Size 3-15
- Load capacity ≤ 12580 N
- For compact applications
- Stainless steel as standard
- Wide and narrow versions

LINEAR ROLLER GUIDE

- Size 25-65
- Load capacity ≤ 579000 N
- High rigidity
- High carrying capacity at static loads
- Vibration resistant

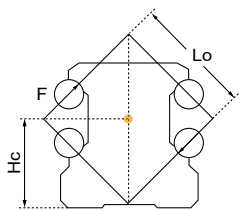


LINEAR RAIL HRC/ARC/ERC

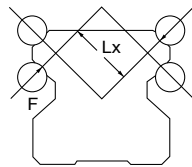
PRODUCT OVERVIEW

Linear rail guides with ball chain for extremely silent and smooth operation. The range includes many types of blocks, but the standard versions are suitable for most linear applications. If necessary, there are versions that are long, short or slim, with low height or with flange. All blocks are equipped with stainless steel reinforcement plates for increased operational life.

The ARC/HRC/ERC Linear Guide Series uses the O-type arrangement for the four row ball circulation design. The contact angle between the rail and ball is 45 degrees. The load capacity is equal in all four main load directions. An O-arrangement increases both load capacity and stiffness in the rolling direction (M_r) compared to a X-arrangement. The O-arrangement excels in particular for systems using only a single rail.



O-Type Arrangement

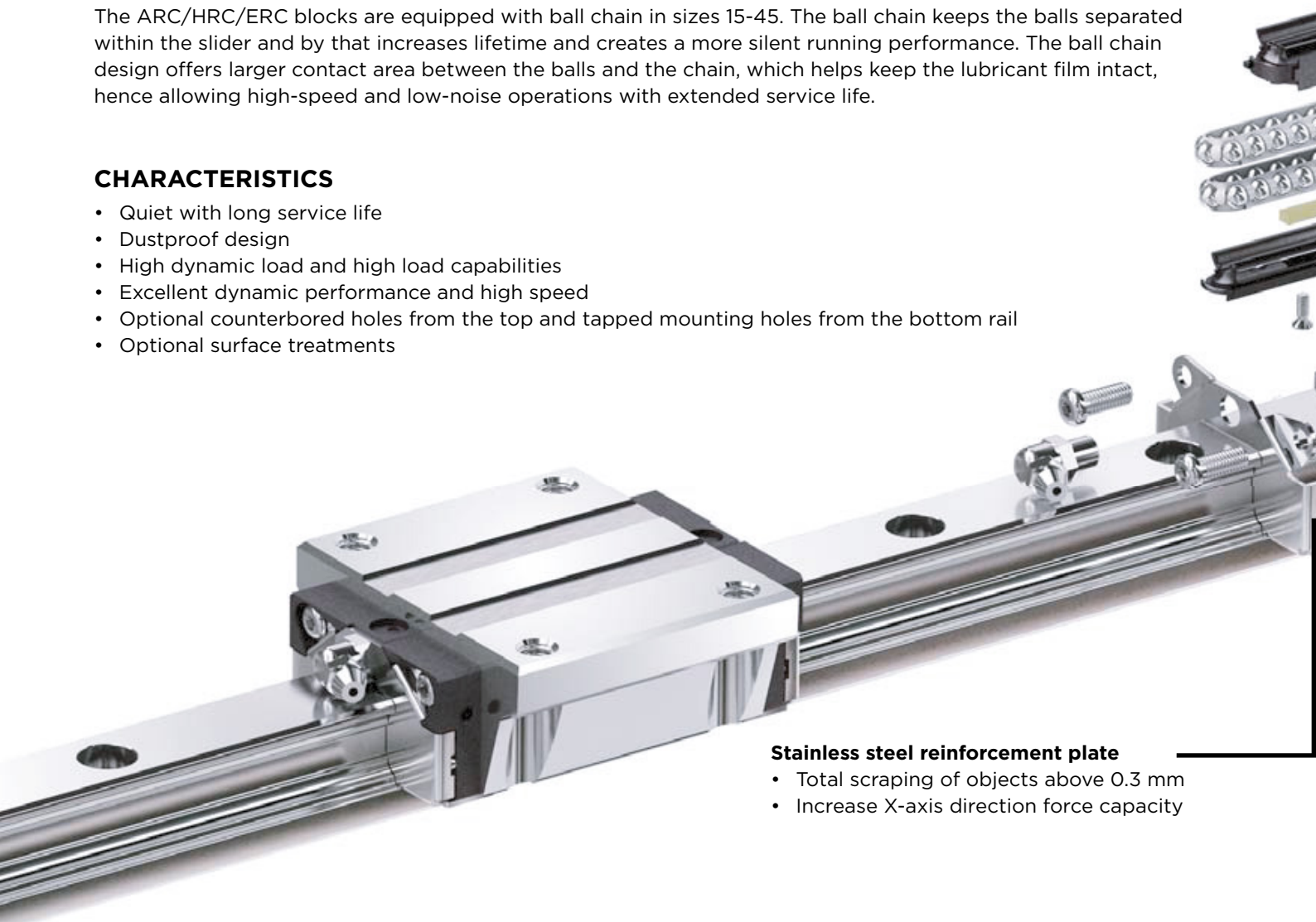


X-Type Arrangement

The ARC/HRC/ERC blocks are equipped with ball chain in sizes 15-45. The ball chain keeps the balls separated within the slider and by that increases lifetime and creates a more silent running performance. The ball chain design offers larger contact area between the balls and the chain, which helps keep the lubricant film intact, hence allowing high-speed and low-noise operations with extended service life.

CHARACTERISTICS

- Quiet with long service life
- Dustproof design
- High dynamic load and high load capabilities
- Excellent dynamic performance and high speed
- Optional counterbored holes from the top and tapped mounting holes from the bottom rail
- Optional surface treatments



Stainless steel reinforcement plate

- Total scraping of objects above 0.3 mm
- Increase X-axis direction force capacity



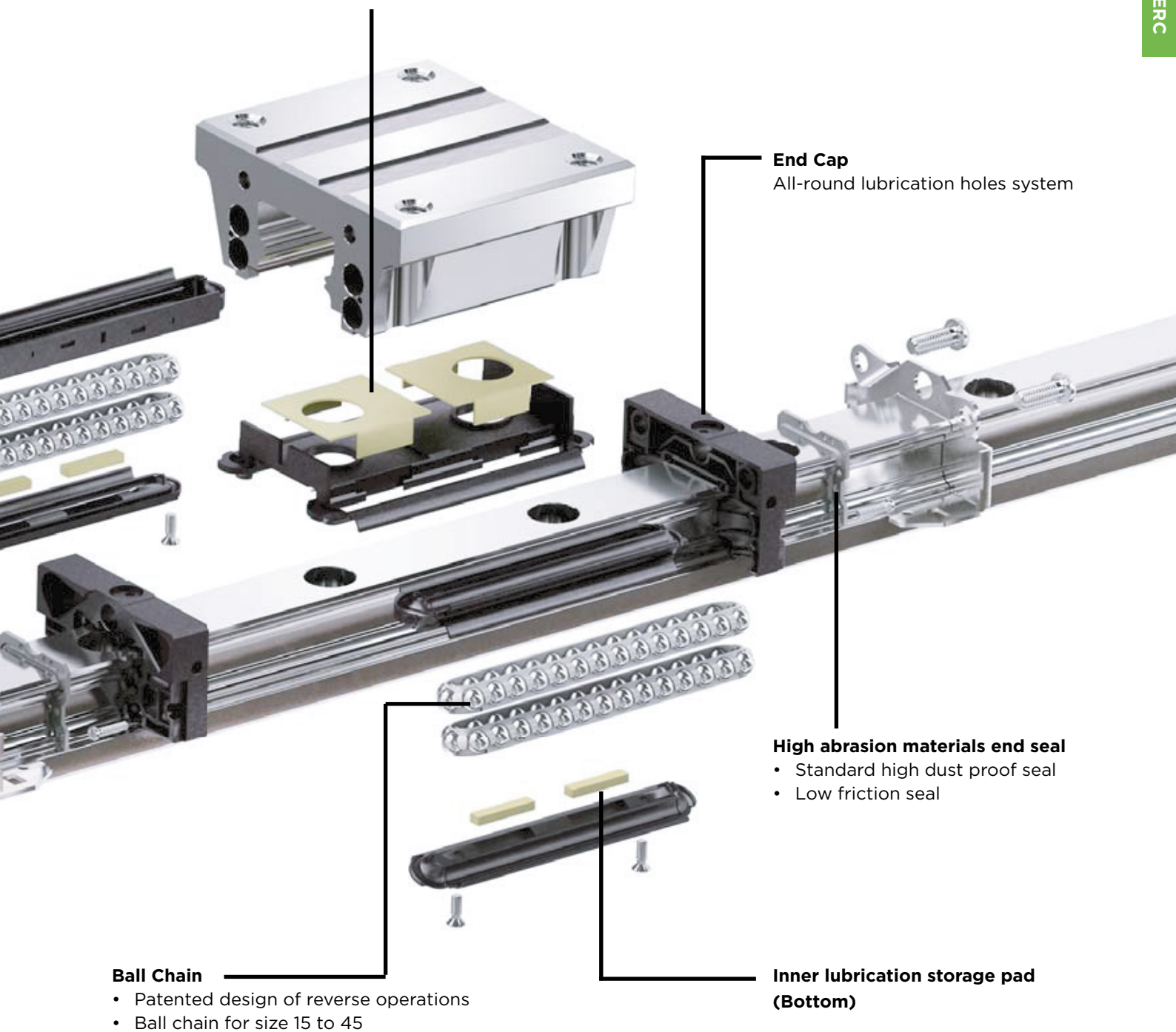
APPLICATION AREAS

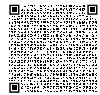
Rail guides have a wide area of use.

They are suitable for most applications that needs a linear movement.

Inner Lubrication storage Pad (Upper)

- Length of the runner block will not be increased
- Full lubrication contact with balls, suitable for short stroke movement



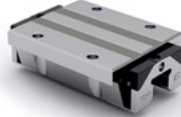


PRODUCTS



HRC FN

Most common
Flanged type block
Standard length
Standard height



HRC FL

Flanged type block
Long block
Standard height



HRC MN

Slim type block
Standard length
Standard height



HRC ML

Slim type block
Long block
Standard height



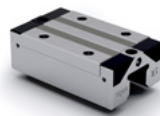
ARC FN

Flanged type block
Standard length
Low height



ARC FS

Flanged type block
Short block
Low height



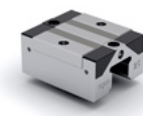
ARC MN

Slim type block
Standard length
Low height



ARC ML

Slim type block
Long block
Low height



ARC MS

Slim type block
Short block
Low height



ERC MN

Slim type block
Standard length
Low height

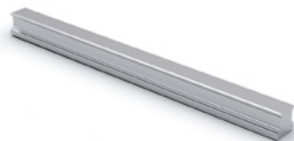


ERC ML

Slim type block
Long block
Low height

**HRC Rail**

Counterbore from above

**HRU Rail**

Tapped from the bottom

**Lubrication kit GP-PT1/8-01**

Lubrication Kit is with a supply nozzle and three kinds of different nozzle adaptors

**Main body of Grease Gun**

Grease gun suitable to combine with Lubrication kit GP-PT1/8-01

**NBR Seal / Metal Scraper**

Extra protection for harsh environments

**MC Clamping Element**

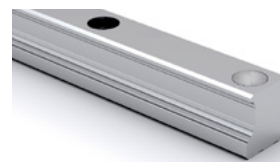
Manually operated clamping element

**MK Clamping Element**

Pneumatic clamping element, normally open

**MKS Clamping Element**

Pneumatic clamping element, normally closed by spring force

**Metal-Plastic Cap**

Stainless cap to prevent dirt/scrap on rail

**See our website for technical specifications and other information.
Scan the QR code on the top of the page to go to the website.**





LINEAR RAIL SBI

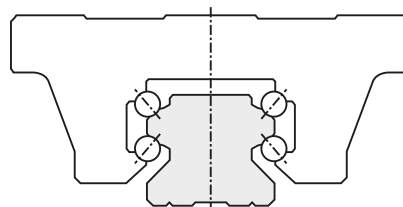
PRODUCT OVERVIEW

Linear Rail SBI is a guide system with high load capacity that can be used for most linear applications. The blocks have four ball rows, ensuring high capacity from all load directions. Linear Rail SBI is designed with a low rail profile and wide base which allows great stability in manufacture and operation. There is a wide range of blocks to meet all application requirements. All rails come in either top or bottom mounting versions.

The linear rail system can be supplied with different types of surface treatments. The rail guides blocks can also be customised with sealing suitable for various environments.

CHARACTERISTICS

- **Circular arc groove**
Two point contact structure of circular arc groove. It keeps the function of self-aligning and smooth rolling performance.
- **45° angle of contact**
Four rows of circular arc groove contact balls at an angle of 45 degrees provides the same capacity in all directions.
- **Low noise and high rigidity**
Optimized ball recirculation structure and design provides low noise and high-rigidity.

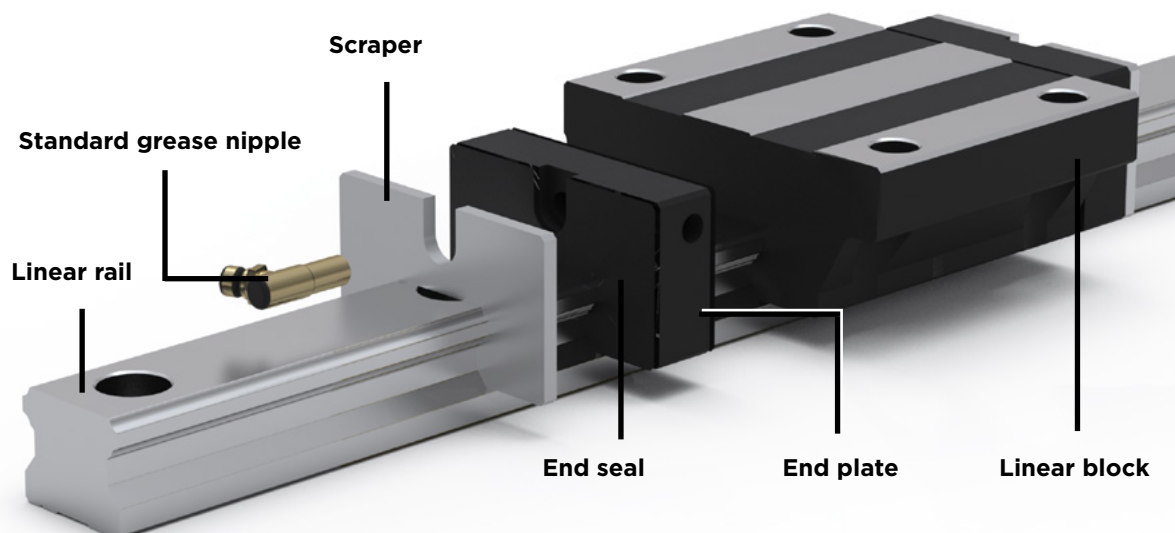


APPLICATION AREAS

Rail guides have a wide area of use. They are suitable for most applications that need a linear movement.

RAYDENT TREATMENT

The rails and blocks can be supplied with the surface treatment Raydent. The treatment gives a corrosion resistant and patented black surface. Balls of stainless steel are available as option. Please contact Rollco for more information.





PRODUCTS



SBI FL

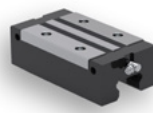
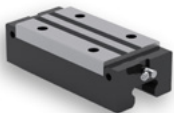
Most common
Flanged type block
Standard/normal length
Standard height
Available with Raydent treatment

SBI SL

Slim type block
Standard/normal length
Standard height
Available with Raydent treatment

SBI FLL

Flanged type block
Long block
Standard height
Available with Raydent treatment



SBI-SLL

Slim type block
Long block
Standard height
Available with Raydent treatment

SBI-HL /-HLS /-CL /-CLS

Slim type block
Standard/normal length
Low height
Available with Raydent treatment

SBI HLL / SBI CLL

Slim type block
Long block
Low height
Available with Raydent treatment



SBI FV

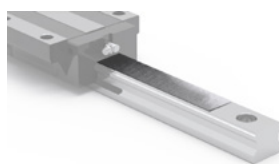
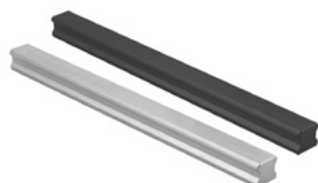
Flanged type block
Short block
Low height
Available with Raydent treatment

SBI SV

Slim type block
Short block
Low height
Available with Raydent treatment

Standard Rail SBI

Counterbore from above
Available with Raydent treatment



Bottom Mounting Rail SBI-B

Tapped from the bottom
Available with Raydent treatment

ST Stainless Dustproof Tape

Tape for improved rail sealing

ZZ Steel Scraper

Protects block from contaminants

**DF Seal High Dust Proof**

Dustproof end seal

**MF Container Self Lubricant**

Self-lubricant container, end seal

**RCS Clamping Element**

Manually operated clamping element

**Adapter Plate for
RCS Clamping Element**

To compensate for different block heights

**MK Clamping Element**

Pneumatic clamping element,
normally open

**MKS Clamping Element**

Pneumatic clamping element,
normally closed by spring force

**See our website for technical specifications and other information.
Scan the QR code on the top of the page to go to the website.**

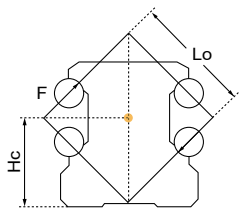


LINEAR RAIL WRC

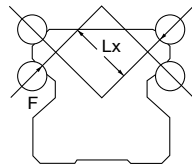
PRODUCT OVERVIEW

Wide rail guides with optional ball chain provides for extremely silent and smooth operation. The blocks are equipped with stainless steel reinforcement plates for increased operational life.

The Linear Rail WRC system uses the O-type arrangement for the four row ball circulation design. The contact angle between the rail and ball is 45 degrees. The load capacity is equal in all four main load directions. An O-arrangement increases both load capacity and stiffness in the rolling direction (M_r) compared to a X-arrangement. The O-arrangement excels in particular for systems using only a single rail.



O-Type Arrangement



X-Type Arrangement

The ball chain keeps the balls separated within the slider and by that increases lifetime and creates a more silent running performance. The ball chain design offers larger contact area between the balls and the chain, which helps keep the lubricant film intact, hence allowing high-speed and low-noise operations with extended service life.

CHARACTERISTICS

- Quiet with long service life
- Dustproof design
- High dynamic load and high load capabilities
- Excellent dynamic performance and high speed
- High quality
- High speed ball chain
- Optional counterbored holes from the top and tapped mounting holes from the bottom rail
- Optional surface treatments

APPLICATION AREAS

Rail guides have a wide area of use. They are suitable for most applications that needs a linear movement.





PRODUCTS



WRC MN

Standard length – standard height



WRC FN

Flanged – standard length – standard height



WRC Rail

Counterbore from above



WRU Rail

Tapped from the bottom

See our website for technical specifications and other information.
Scan the QR code on the top of the page to go to the website.



LINEAR MINIATURE GUIDES

PRODUCT OVERVIEW

Linear guide system in miniature sizes suitable for applications with limited space. Typical application areas are pharmaceutical and electronic industries. The rails are available in a wide and a narrow version with sizes ranging from 2 mm to 15 mm. The slider blocks come in two versions. The ZUE-version has reinforcement plate and integrated lubrication. Both blocks and rails are manufactured of stainless steel. The sliders have two ball rows and have a high load capacity in relation to its size.

The miniature rail guides are designed to manage dusty environments and it has a built-in grease sealing.

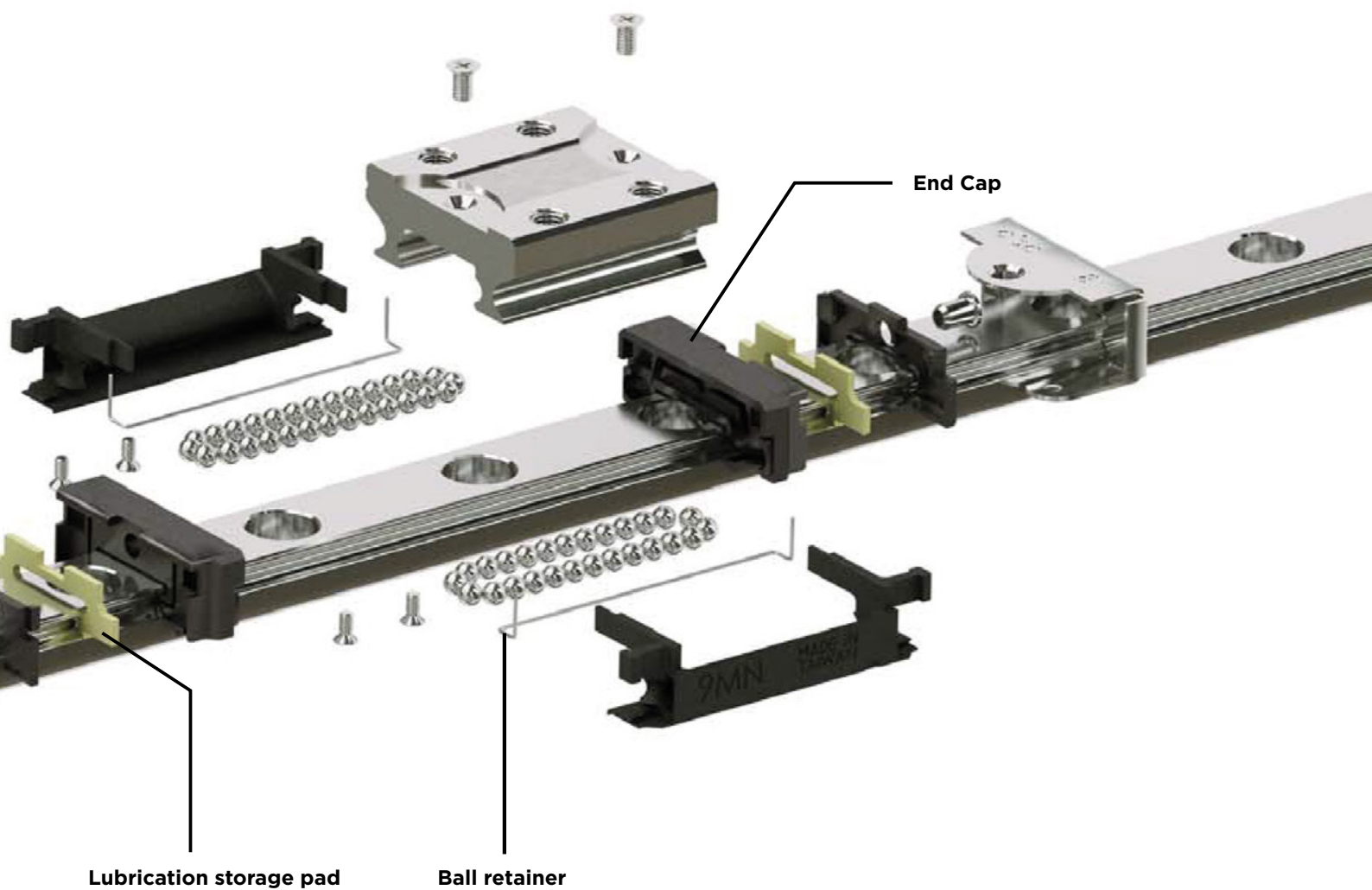
CHARACTERISTICS

- Integrated ball-retainer restrict the balls from falling out of the block before assembly
- Unique ball re-circulation design
- The steel reinforcement plate (ZUE only) ensures sturdy assembly and a longer product lifespan
- Lubrication storage which requires less lubricant.
- Made from heat treated stainless steel
- Built-in bottom seal (ZUE)
- Available in three accuracy grades

APPLICATION AREAS

- Pharmaceutical industry
- Electronic industry







PRODUCTS



MR-M ZUE Series

Block with reinforcement plate and integrated lubrication



MR-W ZUE Series

Wide block with reinforcement plate and integrated lubrication



MR-M SS Series

Standard block with end seal



MR-W SS Series

Wide block with end seal



Standard MR-M Rail

Hardened ground rail



Wide MR-W Rail

Wide hardened ground rail



Standard MRU-M Rail

Hardened ground rail with threaded holes for mounting from below



Wide MRU-W Rail

Wide hardened ground rail with threaded holes for mounting from below

See our website for technical specifications and other information.
Scan the QR code on the top of the page to go to the website.



LINEAR RAIL ALUMINIUM

PRODUCT OVERVIEW

Aluminium linear rail systems are designed to replace standard linear rail guides in steel under certain conditions such as wet or corrosive environment and if low weight is important. The rails consist of extruded aluminium having two pressed-in hardened stainless steel profiles serving as the raceways for the balls of the runner blocks. Advantages are the light weight and corrosive resistant materials. Fixing holes in the attachment surfaces enable machine parts to be directly mounted onto the runner blocks. With this combination it is possible for us to offer a guide system which achieves a good price/performance ratio.

There are two versions of carriages: Flanged and narrow. The blocks are stocked with clearance and standard precision. In case preload and for higher precision "P" is needed, please contact Rollco. The load rating is based on a service performance of 100 km.

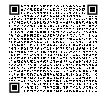
CHARACTERISTICS

- Compact, light-weight design with a weight saving of 60% compared to steel versions.
- Same connection dimensions as steel ball rail systems.
- Much greater parallelism and height offsets of mounting bases possible.
- Insensitive to aggressive environment (such as dust, shavings).
- Significantly better corrosion resistance in comparison to the steel versions.
- Runner blocks initially greased in-factory, therefore provided with long-term lubrication.
- Due to ball retainers, runner blocks can be removed from the rail without any loss of balls.
- Complete interchangeability between runner blocks and rails.
- Both sides of the rail are reference sides. The runner block has one reference side, which can be verified by turning it on the rail.

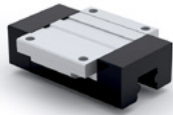
APPLICATION AREAS

Linear Rail Aluminium can be used in a wide range of applications. It is especially suitable for:

- Light machinery
- Handling technology
- Jigs and fixtures
- Assembly technology
- Manual displacement systems,
- Machine enclosures
- Door and window technology
- Booth- and store construction

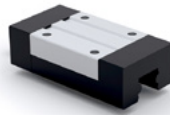


PRODUCTS



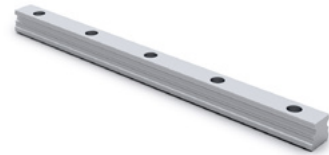
Flanged Block Type FNS

Standard block with flange



Narrow Block Type GNS

Narrow block



Rail Type A

Aluminium rail with counterbore holes



Rail Type B

Aluminium rail with threaded holes for mounting from below



Clamping Element

Manual clamping element



Seal Unit

Greased seal units



Lube Unit with Sealing Function

For continuous lubrication and front seal for dirty environments

See our website for technical specifications and other information.
Scan the QR code on the top of the page to go to the website.



LINEAR ROLLER GUIDES

PRODUCT OVERVIEW

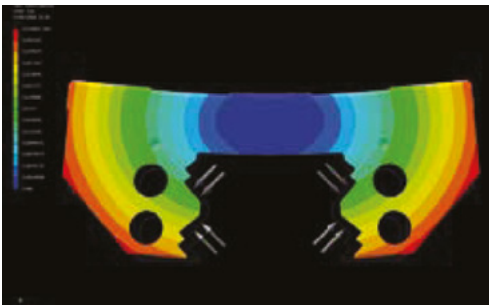
The Linear Roller Guides are highly developed solutions for the high-tech industry. The optimized shape of the rails, the roller guides with logarithmic profiles and the integrated lubrication system multiplies the economical as well as the technical advantages.

CHARACTERISTICS

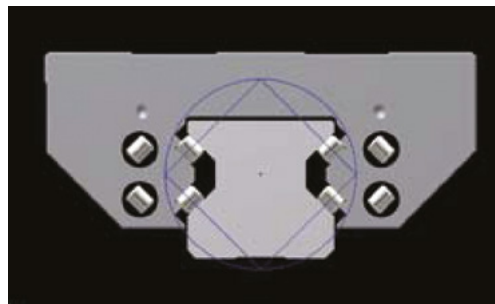
- Long lifetime, high load capacity and stiffness.
- Large contact surface on the entire load zone.
- High operational safety, the construction eliminates transitions between the plastic and steel parts.
- Rails optimized on preload and load capacity.
- Rollers placed in O-shape gives a uniform load on all sides - documented by FEM-analyses.
- Integrated lubrication system. Distribution in the front panel ensures the supply of the tracks with minimal oil or grease.
- Integrated wipers protect the guides in dirty environments. Designed to reduce the leakage of lubricant significantly.

APPLICATION AREAS

- CNC machines
- Punching or pressing machines
- High vibration applications



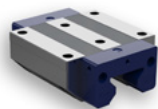
FEM-analyse of LC block



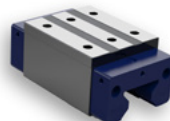
Rollers in O-shape



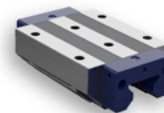
PRODUCTS



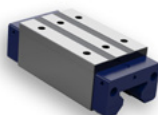
Wide Block Type LC
Standard block with flange



Narrow Block Type SC
Standard narrow block



Wide Block Type LL
Long block with flange



Narrow Block Type SL
Long narrow block



Rail RMG
Hardened ground rail

See our website for technical specifications and other information.
Scan the QR code on the top of the page to go to the website.

TELESCOPIC RAILS

We offer many different types of telescopic rails: With extension in one or both directions, with 50% or full extension. We also have standard and special solutions for extensions over 100%.



TELESCOPIC RAIL LIGHT

Intended for small and medium-sized loads. The rails are available in various materials; rolled steel, cold drawn steel, stainless steel or aluminium.



TELESCOPIC RAIL HEAVY

Designed for industrial applications. They are ideal for applications subject to frequent motion and high loads which also require minimum deflection and high precision. The rails are made of cold drawn carbon steel for high durability. The raceways are hardened to achieve a smooth and easy operation, even at vibrations and impacts. For applications in special environments, we offer zinc-plated or nickel-plated rails.

EASYSLIDE

A compact and strong solution for applications with limited space. The hardened internal raceways allow high loads and vibrations. It is possible to obtain different stroke variations with the same installation dimensions. Easyslide can be supplied with single, double or synchronised sliders.



TELESCOPIC RAIL LIGHT

PRODUCT OVERVIEW

Rollco Telescopic Rails Light are intended for small and medium loads. The telescopic rails are delivered as standard with extension of up to 140% and are available in lengths from 300 mm to 1500 mm. We also offer special versions with shorter or longer rails.

The rails are supplied in different materials. We recommend rolled steel for smaller loads. Cold drawn steel or aluminium are ideal for medium loads. For applications in special environments, we offer stainless steel, zinc-plated or chemically nickel-plated rails. Lithium based grease is used for lubrication.

CHARACTERISTICS

- Loads from 26 kg/pair to 340 kg/pair.
- Extensions from 300 mm up to 1500 mm.
- 100% and 140% extension as standard.
- Lock function in and out available on some models.
- Compact and easy to assemble.
- Standard in aluminium, steel or stainless steel.
Zinc-plated or chemically nickel-plated on request.
- Operating temperatures up to 80° C (for higher temperatures, contact Rollco).



APPLICATION AREAS

- Train doors
- Building and machining industry
- Automotive industry
- Packaging machines
- Special machinery

SELECTING GUIDE

There are some factors to consider when selecting a telescopic rail. If you have any questions, please don't hesitate to contact us. We will help you to find the right solution for your application.

- What is the load of the unit?
- Will your unit be exposed for side loads?
- Is the distance between the pair of slides very large (> two times the closed length of the slides)?
- Do you need 100% extension?
- Is it a horizontal movement?
- Service unit with limited amount of movements or telescopic solution for automation with a large quantity of movements/day?

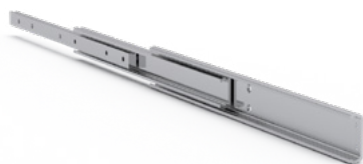
CUSTOMISED TELESCOPIC RAILS

We also offer a wide variety of customised telescopic slides to meet specific requirements, for example heavier loads, longer or shorter movements and extensions from 0 to over 300%. For applications, which need very high stiffness we recommend telescopic rails made from hardened bearing steel like DSS, DE, ASN and DBN. Other special materials or surface treatments are also available. Furthermore we can provide solutions for vertical movements, automation etc.

Please contact us for more information or see our product range Telescopic Rail Heavy.



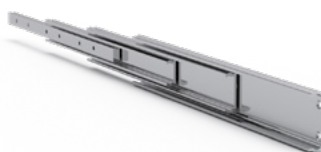
PRODUCTS



5030 - 100% Extension

Telescopic 3 beam slide

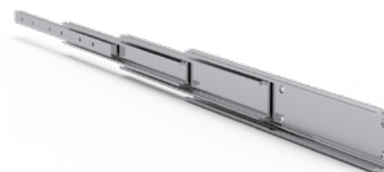
- Stroke 300-1000 mm
- Load ≤ 1900 N/pair
- Vibration resistant
- Steel



5040 - 100% Extension

Telescopic 4 beam slide

- Stroke 300-1000 mm
- Load ≤ 2600 N/pair
- Vibration resistant
- Steel



5040 - 140% Extension

Telescopic 4 beam slide

- Stroke 420-1400 mm
- Load ≤ 1700 N/pair
- Vibration resistant
- Steel



210 Non Lock - 100% Extension

Telescopic ball bearing slide

- Stroke 330-630 mm
- Load ≤ 900 N/pair
- Available with lock function
- Aluminium



220 (Right) & 230 (Left) Lock in / Lock out - 100% Extension

Telescopic ball bearing slide with latching system

- Stroke 330-630 mm
- Load ≤ 900 N/pair
- Available with lock function
- Aluminium



410 - 100% Extension

Telescopic slide 3 beam

- Lightweight
- Stroke 325-1025 mm
- Load ≤ 3400 N/pair
- Available with lock function
- Aluminium



3045 - 100% Extension

Telescopic 3 beam slide

- Low loads
- Stroke 260-710 mm
- Load ≤ 450 N/pair
- Glossy galvanized steel



3080 - 100% Extension

Telescopic 3 beam slide

- High loads
- Stroke 304-1524 mm
- Load ≤ 1780 N/pair
- Glossy galvanized steel



3560 - 100% Extension

Telescopic 3 beam slide

- Stroke 264-721 mm
- Load ≤ 600 N/pair
- Stainless steel SUS 304

See our website for technical specifications and other information.

Scan the QR code on the top of the page to go to the website.



TELESCOPIC RAIL HEAVY

PRODUCT OVERVIEW

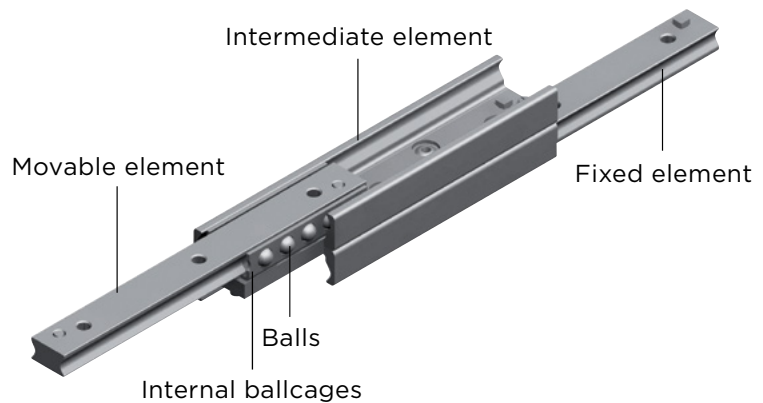
The Telescopic Rail Heavy range consists of versions with full and partial extension and various cross-sections and intermediate elements in S-shape, double-T or square. High loads in combination with cost-efficiency and free movement have long been the outstanding properties of the telescopic rail product line.

TECHNICAL DATA

- Rails and sliders made of cold-drawn bearing steel.
- Induction hardened raceways.
- Balls made of hardened bearing steel.
- Max. operating speed: 0.8 m/s (depending on application).
- Electrolytic galvanised as per ISO 2081 for increased anticorrosion protection (option).
- Temperature range:
ASN / DE / DBN: -20 °C to +170 °C (-4 °F to +338 °F)
DS: -20 °C to +80 °C (-4 °F to +176 °F)

CHARACTERISTICS

- High load with low deflection.
- Rigid intermediate elements.
- Standardised gauge for holes.
- Zero-play running even with maximum load.
- Space saving design.
- High reliability.



APPLICATION AREAS

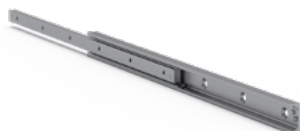
- Railcars (e. g. maintenance and battery extensions, doors).
- Construction and machine technology (e.g., housings and doors).
- Logistics (e.g., extensions for containers or gripper movements).
- Automotive technology.
- Packaging machines.
- Beverage industry.
- Special machines.

SELECTION OF TELESCOPIC RAIL

Selecting the suitable telescopic rail should be done based on the load and the maximum permissible deflection in the extended state. The load capacity of a telescopic rail depends on two factors: the loading capacity of the ballcage and the rigidity of the intermediate element. For mainly short strokes the load capacity is determined by the load-bearing capacity of the ballcage; for average and long strokes it is determined by the rigidity of the intermediate element. Therefore series, which otherwise contain comparable components, are also suited for different load capacities.



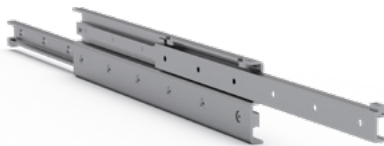
PRODUCTS



ANS

Partial extension one guide rail and slider

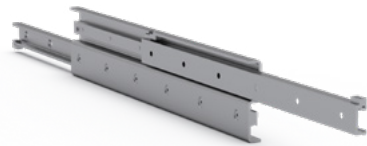
- Size 22-63
- Stroke 76-1013 mm
- 65% extension
- Load ≤ 88494 N/pair
- Vibration resistant
- Suitable for frequent movements
- Double strokes as option



DSS

Full extension w. two guide rails, fixed and movable

- Size 28-43
- Stroke 296-2026 mm
- 100% extension
- Load ≤ 10208 N/pair
- Vibration resistant
- Suitable for frequent movements
- Double strokes as option



DSD

Full double-sided extension w. two guide rails, fixed and movable

- Size 28-43
- Stroke 246-1916 mm
- 100% extension
- Load ≤ 11660 N/pair
- Vibration resistant
- Suitable for frequent movements
- Double strokes as option



DE..

Full double-sided extension w. two T-profiles

- Size 22-63
- Stroke 148-2026 mm
- 100% extension
- Load ≤ 14396 N/pair
- Vibration resistant
- Suitable for frequent movements
- Double strokes as option



DBN

Full extension w. guide rails, fixed and movable and two sliders

- Size 22-43
- Stroke 152-2026 mm
- 100% extension
- Load ≤ 2662 N/pair
- Vibration resistant
- Suitable for frequent movements
- Double strokes as option

See our website for technical specifications and other information.

Scan the QR code on the top of the page to go to the website.

Note! Telescopic Rails Heavy are only for sale on selected markets.

Please contact us for more information.



EASYSIDE

PRODUCT OVERVIEW

Easyslide is a compact and strong linear rail system with long service life. The system consists of a C-shaped linear profile rail with single, double or synchronised sliders with caged ball bearings. The linear rails are manufactured from drawn steel and has hardened internal raceways, which allows high loads and vibrations. Different stroke variations with the same installation dimensions are possible.

Rollco Easyslide is available in three different versions.

SN linear bearing with single slider - version 1

This linear bearing consists of a guide rail and a slider that runs within the ball cage in the guide rail. High load capacities, compact cross-sections and simple and easy mounting characterize this series. In our product range we only list standard lengths and strokes of version 1. Special strokes and lengths on request.

SN linear bearing with multiple independant sliders - version 2

Variant with several sliders, which each runs in its own ball cage, independent of each other in the guide rail. Can be configured and used in an almost infinite variety of ways. The most common is to make a symmetrical configuration. Contact Rollco for further advice.

SN linear bearing with multiple synchronized sliders - version 3

Several sliders run in a common ball cage within the guide rails. The division of the inner slider in two parts have a positive influence on load capacity and running behavior under high M_z and M_y loads. Contact Rollco for detailed advice and calculations.

CHARACTERISTICS

- Available sizes: 22, 28, 35, 43, 63
- Inductive hardened raceways
- Rails and sliders made of cold-drawn bearing steel
- Balls made of hardened bearing steel
- Ball cage made of steel
- Max. operating speed 0.8 m/s
- Temperature range: -30 °C to +170 °C
- Electrolytic zinc-plating as per ISO 2081; increased anticorrosive protection on request
- For horizontal installation only

APPLICATION AREAS

- Transportation industry (e.g. exterior and interior rail and bus doors, seat adjustments, interior)
- Construction and machine technology (e.g. housings, protective covers)
- Medical technology (e.g. X-ray equipment, medical tables)
- Automotive technology
- Logistics (e.g. handling units)
- Packaging machines (e.g. beverage industry)
- Special machines





PRODUCTS



SN

Sizes 22-63

C-shaped linear profile rail with
single, double or synchronised
sliders with caged balls

**See our website for technical specifications and other information.
Scan the QR code on the top of the page to go to the website.**

**Note! Easyslide products are only for sale on selected markets.
Please contact us for more information.**



BALL SCREWS, LINEAR BALL BEARINGS & STEEL SHAFTS

We have a wide range of ball screws, bearings and shafts to meet all requirements. We customise all ball screws and shafts in our own workshop in Helsingborg according to your requests.



BALL SCREWS

The range includes, in addition to various sizes, pitches and precisions, many different variations such as ball screws with flange, thread or pre-tensioned double nut.

Many accessories available, such as support units, housings and nuts with flanges.



LINEAR BALL BEARINGS & STEEL SHAFTS

Our linear ball bearings are available in closed, open, compact or self-aligning versions with corresponding shafts in many sizes.

The shafts are manufactured of steel, stainless or chromium plated versions and can be delivered with radial holes. Accessories include housings, shaft blocks, shaft supports etc.



BALL SCREWS

PRODUCT OVERVIEW

Ball screws are used when a rigid and precise linear driving with high efficiency and intensity is required. Depending on required force, speed and durability, different diameters and leads can be selected. As a ball screw is based on the same load carrying principles as a ball bearing, the life time is possible to calculate in similar ways. Within its life time, there are practically no wear or loss of precision.

The Rollco product range is based on rolled ball screws. Rolled ball screws offer the best price-performance for automation, handling and light machine tool needs.

RIGIDITY

A ball screw is magnitudes more rigid than for example timing belts and chain drives. For optimal rigidity, a preloaded ball nut and end bearing unit should be used.

Precision

Due to its rigidity in combination with the high lead accuracy, the precision of a ball screw drive is in the 1/10 to a 1/1000 of a millimetre depending on selected play or preload.

EFFICIENCY

Due to rolling friction between screw shaft and ball nut, the practical efficiency of a ball screw is between 80 – 90%. This saves energy and motor size. It also allows high intensity as the power losses (waste heat) is 5 to 10 times lower compared to trapezoidal screws.

DURABILITY

A correct selected and maintained ball screw have a very long and predictable service life. Compared to many other linear drive mechanisms, there is practically no gradual loss of performance or precision during the service life.





PRODUCTS



FSCR/FSCL

Ball nut with flange, for right & left lead screw (SR/SL), most common type



FDCR

Ball nut, double, with flange, for right lead screw (SR)



FSER

Ball nut with flange, long lead, for right lead (SR) screw



RSCR

Ball nut cylindrical with thread, internal recirculation, for right lead (SR) screw



RSKR

Ball nut, miniature, cylindrical with thread for right lead (SR) screw



SFYR

Ball nut with flange, overlead, for right lead (SCR) screw



SFKR

Ball nut, miniature, with flange for right lead (SCR) screw



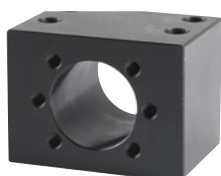
SNFSCR

Safety nut for ball screw



RN/RN..W

Lock nut for ball screw



RNB

Housing for ball nut FSCR/FSCL



BKN

Support unit for end of ball screw machined accordingly



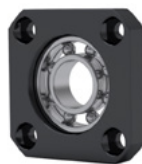
BFN

Support unit for end of ball screw machined accordingly



FKN

Support unit for end of ball screw
machined accordingly



FFN

Support unit for end of ball screw
machined accordingly



WBK..DF/WBK..DFF

Support unit heavy load for end of
ball screw machined accordingly

See our website for technical specifications and other information.
Scan the QR code on the top of the page to go to the website.



LINEAR BALL BEARINGS & STEEL SHAFTS

PRODUCT OVERVIEW

SHAFTS

Precision shafts are machine elements that in addition to high material quality, surface hardness, and surface quality are characterized by high precision in terms of dimension and shape.

This makes precision shafts extremely well-suited for applications like the following.

- Guide shaft in combination with linear bearings, cam and ball bearing rollers.
- Guide shaft for mounting by plain bearing.
- Stretch and straightening rolls.
- Shafts and axles in fixture construction and automation design.

Low-corrosion steels

Precision shafts from X46 or X90 are available for use in medical technology, the food industry, and other production lines.

Hard chrome plating

If high wear resistance and improved corrosion resistance compared to quenched and tempered steel are required, hard chrome plated precision shafts are perfect for the job.

Shaft types

Type	Series	Size range	Production length	Standard tolerance	Material	Coating
Precision shafts	W	5 - 80 mm	Up to 6000 mm (depending on size)	h6	Cf53 / 1.1213 / C53G 59 HRC min.	-
Precision shafts, chrome-plated	WV	10 - 40 mm	6000 mm	h7	Cf53 / 1.1213 / C53G 59 HRC min.	Chrome layer 800 HV min. ca. 10 µm
Precision shafts, stainless steel X90	WRA	8 - 50 mm	6000 mm	h6	X90CrMoV18 / 1.4112 54 HRC min.	-
Precision shafts, stainless steel X46	WRB	5 - 60 mm	Up to 6000 mm (depending on size)	h6	X46Cr13 / 1.4034 52 HRC min.	-
Predrilled precision shafts	WB	12 - 40 mm	6000 mm	h6	Cf53 / 1.1213 / C53G 59 HRC min.	-
Hollow shafts	WH	12 - 50 mm	6000 mm	h7	C60 / 1.1221 59 HRC min.	-

LINEAR BALL BEARINGS

Rollco linear ball bearings are available in closed, open, compact or self-aligning versions with corresponding hardened shafts in many sizes. We also offer the option of stainless steel ball bushings.

In our workshop in Helsingborg we cut and machine according to customer requirements and therefore are able to offer quick deliveries with high flexibility.

Accessories include housings, shaft blocks, shaft supports etc.





PRODUCTS



SBE

Self-aligning closed type linear ball bearing, Ø 16-50 mm.



LME

Closed type, linear ball bearing, Ø 5-60 mm.



LMES

Closed type stainless, linear ball bearing Ø 8-40 mm.



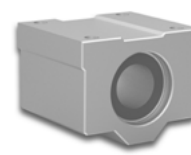
LME...UUOP

Open type, linear ball bearing, Ø 12-50 mm.



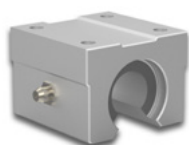
KH

Compact type, linear ball bearing, Ø 6-50 mm.



KBA...UU

Linear unit, closed type, Ø 12-50 mm.



KBA...UUOP

Linear unit, open type, Ø 16-40 mm.



LMEK...UU

Linear unit with flange, Ø 8-60 mm.



LMEK...LUU

Linear unit with flange, long type, Ø 12-60 mm.



W

Hardened precision steel shaft, Ø 5-80 mm.



WV

Chrome plated hardened precision shaft, Ø 10-40 mm.



WRB

Hardened precision stainless steel shaft X46, Ø 5-60 mm.



WRA

Hardened precision stainless steel shaft X90, Ø 8-50 mm.



WH

Hardened precision steel shaft hollow, Ø 12-50 mm.



WB

Hardened precision steel shaft predrilled, Ø 12-40 mm.



SK

Shaft support block, Ø 12-50 mm.



SHF

Shaft support block, Ø 12-40 mm.



FTSN

Aluminium shaft support with flange, for drilled shafts Ø 12-40 mm.



FTSU

Aluminium shaft support low type, for drilled shafts Ø 16-40 mm.

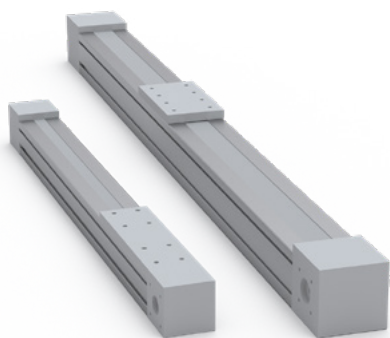
See our website for technical specifications and other information.
Scan the QR code on the top of the page to go to the website.



LINEAR UNITS

Complete, linear units with belt or spindle drive. The units are ready for installation, which saves both construction and assembly time. All linear units can be combined to various multi-axis linear systems.

Linear Units RHL and QME are manufactured and assembled in our workshop, which ensures very short delivery times. We have various accessories in stock and can manufacture motor flanges and make other adjustments according to your needs.



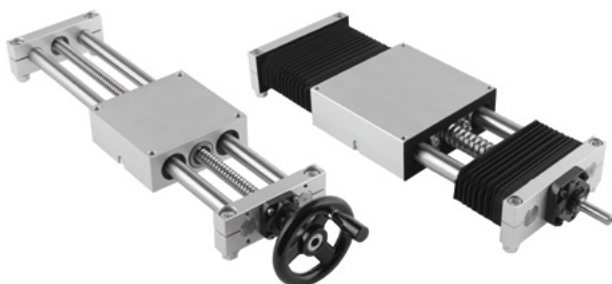
LINEAR UNIT RHL

Belt driven unit with linear rail and toothed belt, compatible with structural systems. The stroke length is selectable per millimetre from 0 up to 10 m.



LINEAR UNIT CT & MT

Linear Units CT & MT provide high precision and come with either ball screw or belt drive. Compact dimensions provide high load capacities, high speed, accuracy and repeatability.



LINEAR UNIT QME

Unit consisting of a linear table with linear ball bearings on hardened shafts, driven by ball- or lead-screw. Bellows, hand wheels, mechanical position counters and many other options are available.



LINEAR UNIT RHL

PRODUCT OVERVIEW

RHL is a complete linear unit with rail guide and toothed belt. The unit is delivered ready to mount and thereby saves both design and assembly time.

Linear Unit RHL is available in two sizes, RHL80 and RHL110. The units are based on aluminium profile and equipped with linear rail, belt and pulleys. The stroke length is selectable per millimetre from zero up to 10 metres.

We cut and assemble everything in our own workshop, which enables very short delivery times. We have various accessories such as T-slots, angles and mounting plates in stock. We can also manufacture motor flanges and make other adjustments according to customer specifications.

CHARACTERISTICS

- Compact unit
- Compatible with structural systems
- Possible to use in X-Y-Z systems
- Customized versions available upon request





PRODUCTS



Linear Unit RHL

Complete linear unit with linear rail and toothed belt
Size 80 and 110



Adapter kit RHL

Connects linear unit RHL with a planetary gearbox.



Sensor

Precise readjustment, all-electronically, vibration resistant, high protection class

Various T-slots, angle brackets and fixing elements are also available.

See our website for technical specifications and other information.

Scan the QR code on the top of the page to go to the website.

Add a planetary gearbox for a complete solution

We offer planetary gearboxes that connects to linear units RHL by using our adapter-kit. The planetary gearboxes are available in both straight and right-angle execution. In our CAD-configurator it is easy to design your linear unit and planetary gearbox by yourself. You can then download associated CAD-files.

See section Planetary Gearboxes in this catalogue for further information.





LINEAR UNIT QME

PRODUCT OVERVIEW

By using Linear Unit QME from Rollco you save both time and money. The units are designed to fulfil the need of an easy to mount unit for medium precision requirements. The units are ready to mount linear tables guided with linear ball bearings on hardened shafts and driven by ball- or lead-screw. There is a wide variety of executions available for quick delivery from our workshop.

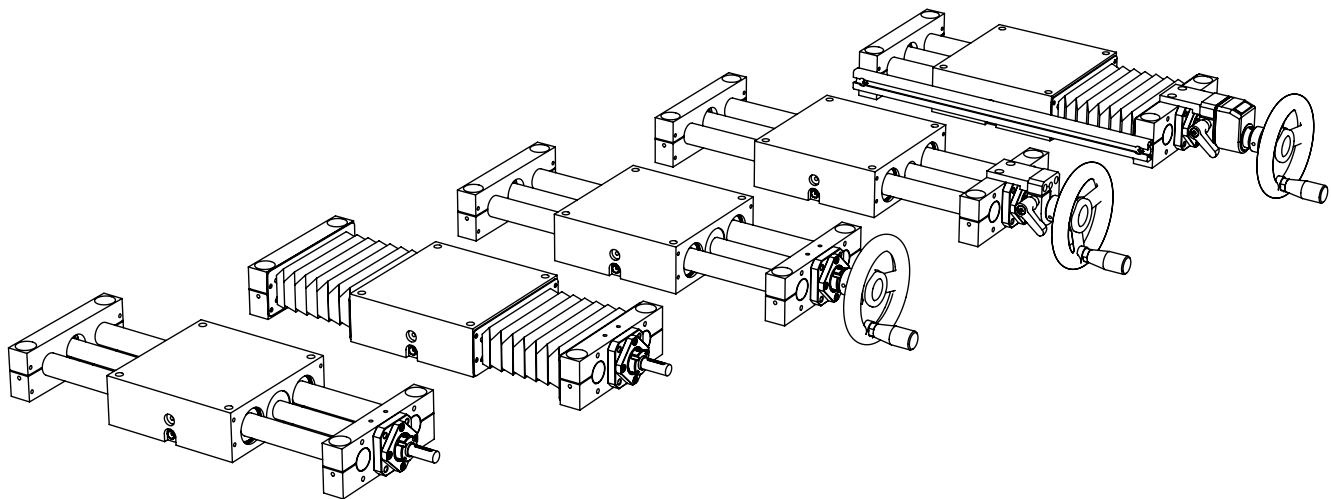
Selectable standard options are:

- Bellows
- Hand wheel
- Screw locking
- Mechanical position counter
- Left+Right drive units
- Magnetic end position switches

Ask us if you need higher level of corrosion resistance, low/high temperature versions, other screw-leads or -types, customized machining of the drive- and mounting-interfaces and so on.

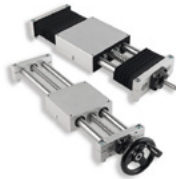
CHARACTERISTICS

- Linear ball bearings used for lowest friction and minimal and persistent play.
- With low backlash ball screw for motor-drive or trapezoidal screw with bronze nut for manual operation.
- Customized mounting flange for motor and/or customized end-machining of the screw shaft available.
- Corrosion resistant version as option.



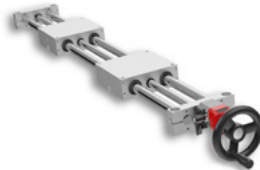


PRODUCTS



Linear Unit QME - Standard version

Ready to mount linear tables guided w. linear ball bearings, shafts and driven by ball- or lead-screw



Linear Unit QME Right + Left drive

Ready to mount linear tables guided with right + left drive



Hand wheel



Hand wheel with locking device

Locking device is recommended for all hand driven units with ball screw



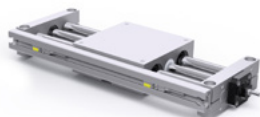
Hand wheel with locking device and position indicator

Locking device is recommended for all hand driven units with ball screw



Bellow

Bellow that protects against dust and dirt

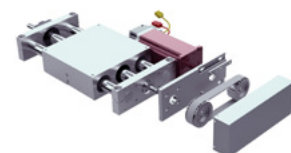


Magnet and rail for end/position switches



Position switch

Precise readjustment, all-electronically, vibration resistant, high protection class



Motor flange and coupling or timing belt transmission

See our website for technical specifications and other information.
Scan the QR code on the top of the page to go to the website.



LINEAR UNITS CT & MT

PRODUCT OVERVIEW

This extensive range of linear units are characterized by compact dimensions allowing high performance features such as high speed, good accuracy and repeatability. They can easily be combined to multi-axis systems. Excellent price-/performance ratio and quick delivery time are ensured.

A compact, precision-extruded aluminum profile from AL 6063, with zero-backlash rail guide systems, allows high load capacities and an optimal sequence for the movement of larger masses at high speed.

Different carriage lengths with lubrication ports allows for easy re-lubrication and allows the possibility to attach additional accessories.

The aluminum profile includes T-slots for fixing the linear unit and for attaching sensors and switches. Also, a Reed switch can be used. Various adaptation options, for attaching (or redirecting), for motors or gearboxes are also available.

The aluminium profiles are manufactured according to the medium EN 12020-2 standard.

- Straightness = 0.35 mm/m
- Max. torsion = 0.35 mm/m
- Angular torsion = 0.2 mm/40 mm
- Parallelism = 0.2 mm





PRODUCTS



Linear Unit MTJ

Sizes 40, 65, 80 and 110
Toothed belt drive and compact dimensions, high speed and good accuracy



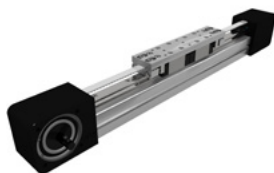
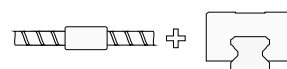
Linear Unit MRJ

Sizes 40, 65, 80 and 110
Toothed belt drive and compact dimensions, very high speeds up to 10 m/s w. track rollers



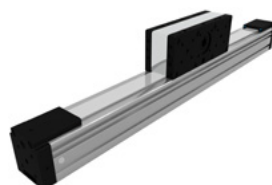
Linear Unit MTV

Sizes 40, 65, 80 and 110
Precision ball screw drive, integrated guide rail and compact dimensions



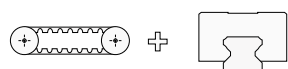
Linear Unit MTJ ECO 40

Size 40
Toothed belt drive and a zero-backlash ball rail guide system, easy and accurate



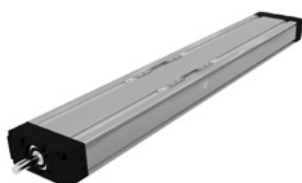
Linear Unit MTJZ

Sizes 40, 65, 80 and 110
Z-axis toothed belt drive, integrated ball rail system and compact dimensions



Linear Unit CTJ

Sizes 90, 110, 145 and 200
Toothed belt drive and two parallel, integrated, zero-backlash rail guides



Linear Unit CTV

Sizes 90, 110, 145 and 200
Precision ball screw drive and two parallel, integrated, zero-backlash rail guides



Motor Side Drive - MSD

For linear units with drive journal w/o keyway to mount MSD belt drive



Fixing System

The linear units are mounted by using fixtures placed in the slot on the side of the profile



Centering Rings

For linear units CT/MT



Wing nuts / Hammer nuts



Magnetic Field Sensors



MS - Mechanical Switch

Mechanical Switch, to be used together with connection plates



IS - Inductive Switch

For linear units CT/MT



Couplings

The maximum transmittable torque of the clamping hub depends on the bore diameter



Synchronisation Shaft OSL

For linear units CT/MT



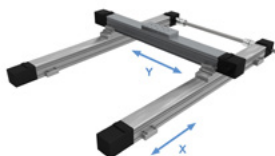
Synchronisation Shaft OSR

For linear units CT/MT



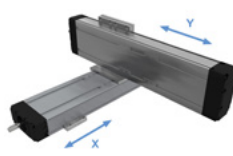
Motor Adapter with Coupling

For Linear Units CT & MT



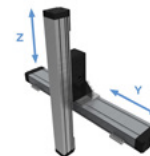
X-Y Connection Elements

X-Axis = 0° Y Axis = 0°



X-Y Connection Elements

X-Axis = 0° Y Axis = 90°



Y-Z Connection Elements

Y-Axis = 0° Z Axis = 90°

See our website for technical specifications and other information.

Scan the QR code on the top of the page to go to the website.

ELECTRIC CYLINDERS & SLIDERS

Electric cylinders are quick and simple to design into applications and engineered to work and fit to industrial servo motors. Electromechanical cylinders combine the precision, rigidity, and controllability of servo mechanics with the speed and durability of pneumatic cylinders.

By using an integrated precision ball screw drive, the rotary motion of the drive shaft is converted to the linear motion of the piston rod or the slide, with high mechanical efficiency and low internal friction.



MCE & MSCE MINI ELECTRIC CYLINDERS & SLIDERS

This range of linear actuators and sliders can easily be combined to a multi-axis system. They allow relatively high load capacities and optimal cycles for moving large payloads at high speeds in both horizontal and vertical directions.

The MCE is a mini linear electric cylinder with a piston rod and the MSCE a mini linear drive with an integrated linear guiding system and slide.

PNCE ELECTROMECHANICAL CYLINDERS

PNCE combine a ball screw drive with a suitable bearing and guiding system. They are well suited for high dynamic servo-drive and 7/24 automation tasks. The robust aluminium housing with standardized interfaces makes use of the wide range of mechanical fittings for ISO 15552 pneumatic cylinders.

The design with smooth surfaces enables quick and effective cleaning. Special versions with protection class IP65, food grade materials or high corrosion resistance for harsh environments are available.



MCE & MSCE MINI ELECTRIC CYLINDERS & SLIDERS

PRODUCT OVERVIEW

Mini electric cylinder and sliders are small linear drives. The MCE has a piston rod and the MSCE has an integrated linear guiding system and slide.

By using an integrated precision ball screw drive, the rotary motion (rotation) of the drive shaft is converted to linear motion (translation) of the piston rod or slide with high mechanical efficiency and low internal friction.

High-performance features such as high speed, good positioning accuracy, and high repeatability are ensured through a precision ball screw drive and an anti-rotating piston rod device or a linear guiding system.

A preassembled standard motor (in-line with a motor adapter and a coupling or in-parallel with a motor side drive and a timing belt) together with the standard drive, makes the system plug and play ready. Compact dimensions and optimally selected motor combinations cover a wide range of applications.

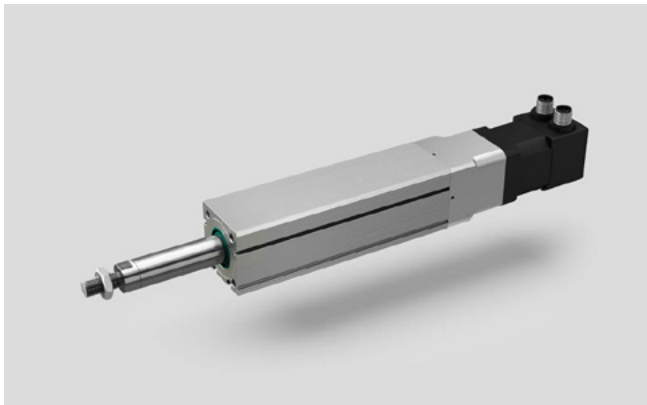
The aluminium cylinder profile includes T-slots on the bottom for fixing the electric cylinder/slider, as well as side slots for clamping fixtures and magnetic field sensors.

Excellent price-performance ratio and a quick delivery time, due to standard lengths, are ensured.

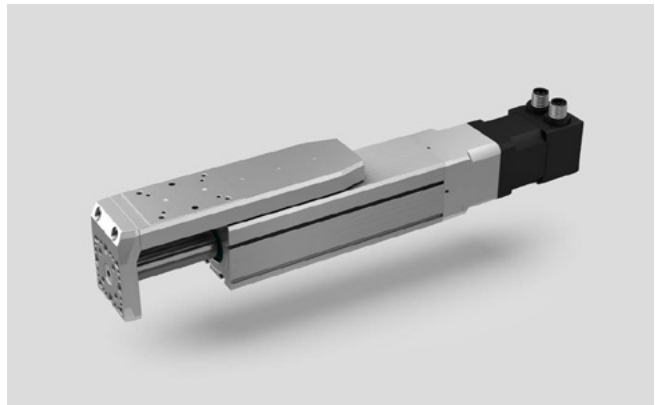
Each MCE/MSCE is optimally pre-lubricated and ready for a maintenance-free operating process. MCE/MSCE allows relatively high load capacities and optimal cycles for moving the larger payloads at high speeds in both horizontal and vertical directions.

The aluminium profiles are manufactured according to the medium EN 12020-2 standard.

Motor adapter VK with a coupling and a motor



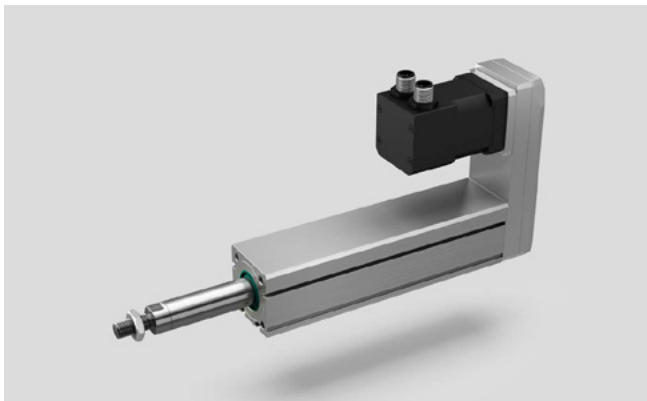
MCE



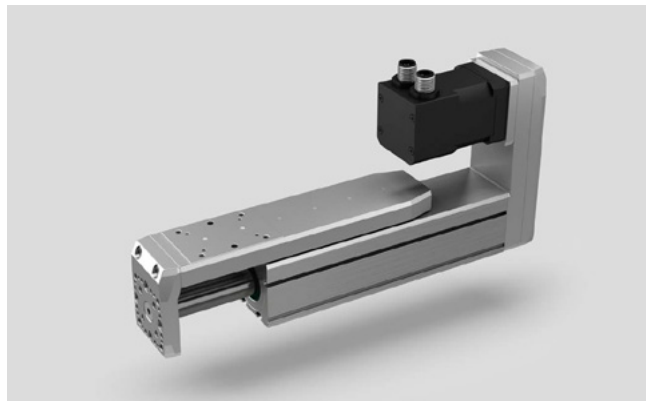
MSCE



Motor side drive with timing a belt and a motor

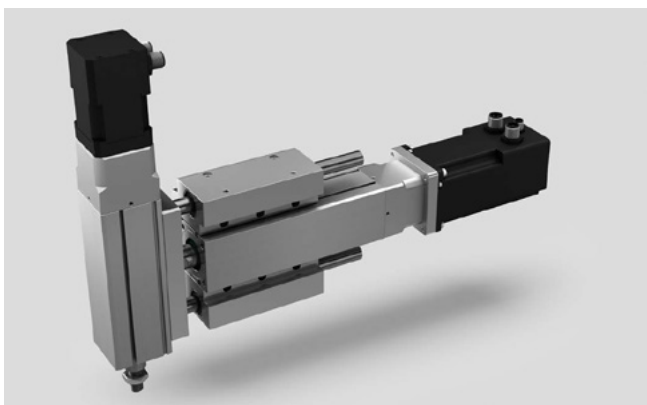


MCE

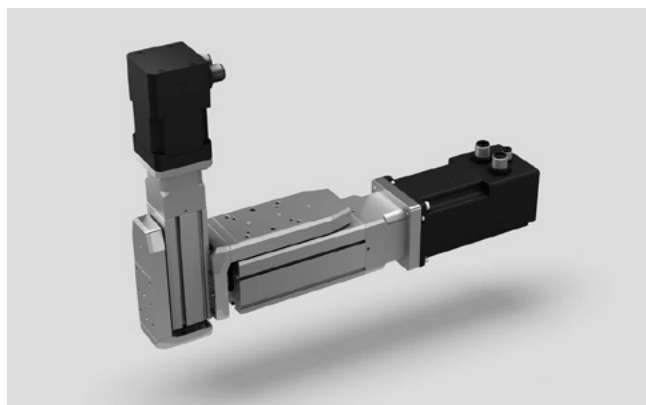


MSCE

Multi-axis system

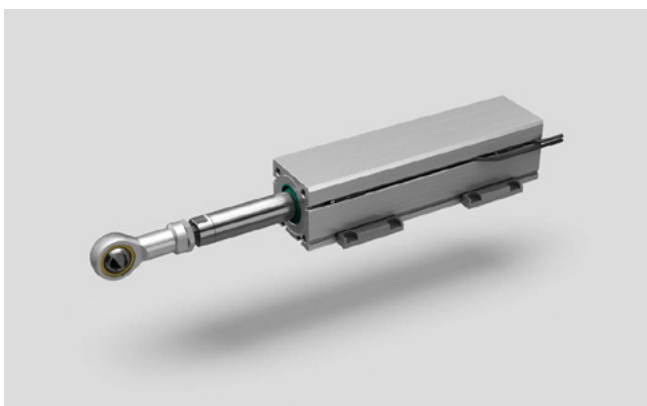


MCE (guiding unit GUC is used)

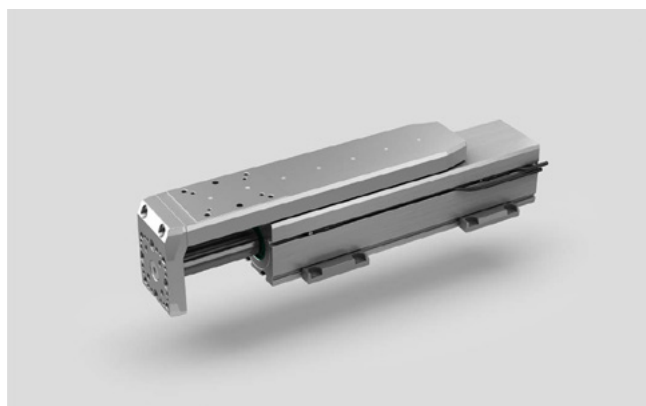


MSCE

Accessories



MCE (without a preassembled motor)



MSCE (without a preassembled motor)



PRODUCTS



MCE

Anti-rotating piston rod, compact dimensions, high speed and highly flexible
Sizes 25-45



MSCE

Linear guiding system and slide, compact dimensions, high speed and highly flexible
Sizes 25-45



Rod eye SGS

Piston rod accessory, galvanized steel



Rod clevis SG

Piston rod accessory, galvanized steel



Self-aligning joint FK

Piston rod accessory, galvanized steel



Coupling piece KSZ

Piston rod accessory, galvanized steel



Flange mounting MAFL

Mounting attachment accessory, anodized aluminium



Swivel/clevis mount MASU

Mounting attachment accessory, aluminium



Swivel foot mounting MLG

Mounting attachment accessory, aluminium



Foot mounting MAHP

Mounting attachment accessory, stainless steel



Clevis foot mounting MLBU

Mounting attachment accessory, galvanized steel



Back mount ABM

Mounting attachment accessory,
stainless steel



Trunnion mount MZK

Mounting attachment accessory,
galvanized steel



Trunnion support MLZ

Mounting attachment accessory,
galvanized steel and sinterized
bronze



Guiding unit GUC



Magnetic field sensors

Magnetic field sensors, cables and
sensor holder



Motor adapter VK



Couplings



Motor side drive MSD with a timing belt



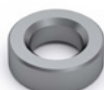
Clamping fixture

Mounting attachment accessory
clamping fixture, powder coated
zinc alloy



Slot nut

Galvanized steel



Centering ring

Stainless steel

See our website for technical specifications and other information.
Scan the QR code on the top of the page to go to the website.



PNCE ELECTROMECHANICAL CYLINDERS

PRODUCT OVERVIEW

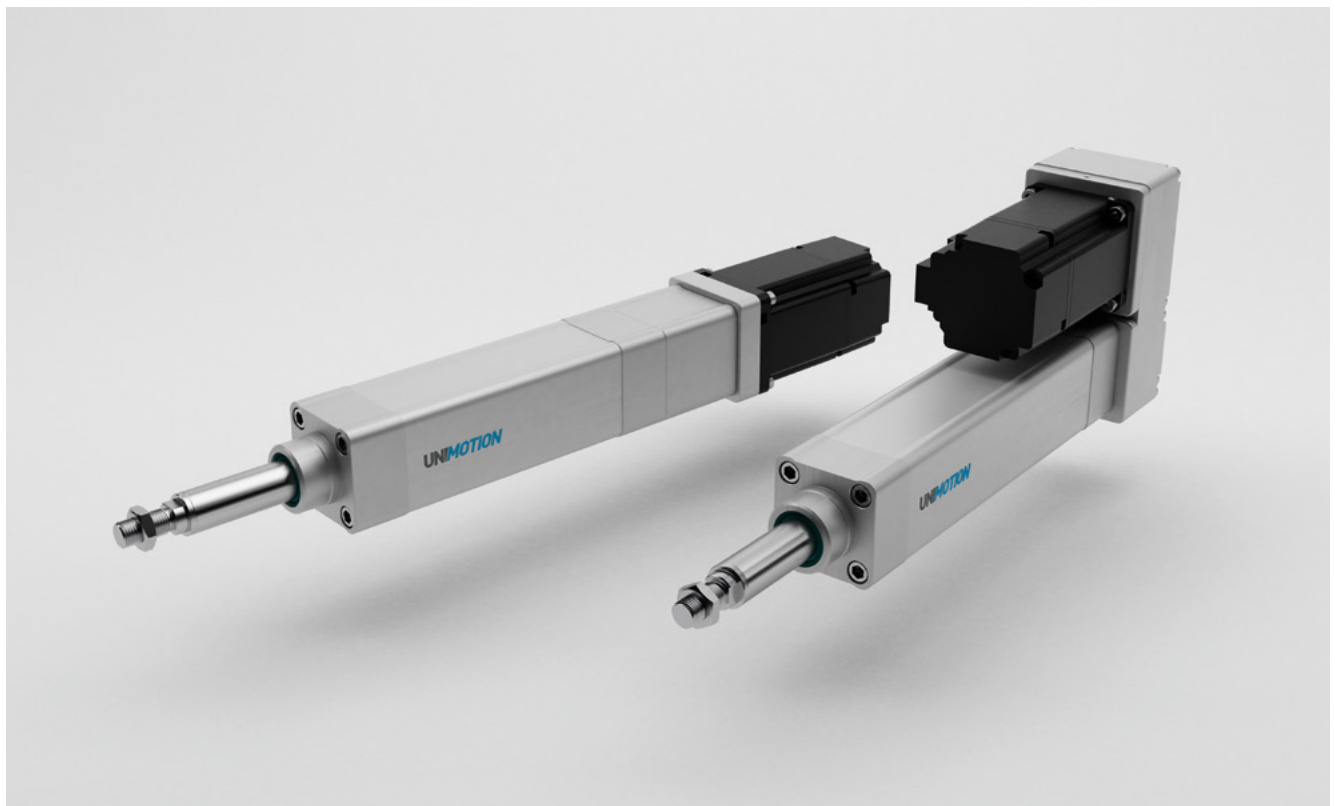
The PNCE are electric cylinders with a precision ball screw drive. The electric cylinder is based on the standard ISO 15552. Its outer design and dimensions are very similar to pneumatic cylinders.

The precision ball screw with reduced backlash of the ball nut and non-rotating piston rod offers high performance. Preload is available on request. For a long service life the re-lubrication can be done through a lubrication nipple.

The design with its smooth surfaces enables easy cleaning of the cylinder, which makes it suitable for food and beverage applications. It can be additionally equipped with switches and ISO standard accessories. The excellent sealing of the components in the cylinder protects the interior of the cylinder from dust, water and other contaminants. For harsh environments there is a high corrosion resistance version.

CHARACTERISTICS

- High speeds
- Good positioning accuracy
- High repeatability
- Long service life
- Protection classes up to IP65
- Corrosions resistant versions available
- Smooth surfaces and secure sealing





Sensor holder



ISO standard accessories



Pressure compensation (IP65)



Motor adapter with coupling



Motor side drive

Options for special applications

IP65 protection class (IP65)

The appropriate sealing of the external parts ensures the electric cylinder the IP65 protection class. The IP65 protection class of the electric cylinder fulfils the specifications to IEC 60 529. The connection for pressure compensation in the cylinder profile ensures the exchange of air between the interior of the cylinder and the environment. This prevents the occurrence of excess pressure or negative pressure inside the electric cylinder. It also protects the interior of the cylinder from the external media like dust and water.

IP65 protection class with high corrosion resistance (IP65CR)

It offers high corrosion resistance in harsh environments. The version IP65CR includes all the features of the electric cylinder version IP65. In addition to ensuring high corrosion resistance all the external parts are corrosion resistant (e.g. the connection for pressure compensation, lubrication nipple, and the connection elements are made of stainless steel). More information about materials is available upon request in the extended material information list.

For applications in the food industry (FI)

The version FI includes all the features of the electric cylinder version IP65CR. It is upgraded by materials suitable for some applications in the food industry. The cylinder is greased with a lubricant class NSF H1. The design with the smooth surfaces of the aluminium profile enables its quick and effective cleaning. During the cleaning the sealing air can be applied to the connection for pressure compensation. The use for the food and beverage industry is limited by the materials of the electric cylinder. More information about materials is available upon request in the extended material information list.



PRODUCTS



PNCE

Based standard ISO 15552 w. ball screw and non-rotating piston rod for high performance
Sizes 32-100



SGS

Piston rod accessory SGS, galvanized or stainless steel
AISI 304



SG

Piston rod accessory SG, galvanized or stainless steel
AISI 30



FK

Piston rod accessory FK, galvanized steel



KSZ

Piston rod accessory KSZ, galvanized steel



HG

Mounting attachment accessory HG, galvanized or stainless steel
AISI 304



HGL

Mounting attachment accessory HGL, galvanized steel



HGLL

Mounting attachment accessory HGLL, galvanized steel



FG

Mounting attachment accessory FG, galvanized or stainless steel
AISI 304



ZK

Mounting attachment accessory ZK, galvanized steel



LZ

Mounting attachment accessory LZ, galvanized steel



SGN

Mounting attachment accessory SGN, aluminium or stainless steel
AISI 316

**SBG**

Mounting attachment accessory
SBG, aluminium or stainless steel
AISI 304

**SSG**

Mounting attachment accessory
SSG, aluminium or stainless steel
AISI 316

**SGL**

Mounting attachment accessory
SGL, Aluminium or stainless steel
AISI 304

**LSG**

Mounting attachment accessory
LSG, steel (black cataphoresis) or
stainless steel AISI 316

**LG**

Mounting attachment accessory
LG, aluminium or stainless steel
AISI 304

**ZKCE**

Mounting attachment accessory
ZKCE

**Blanking screws**

Stainless steel AISI 304

**Guiding unit GUH**

Body in aluminium, guides in steel.

**Motor adapter with coupling**

Motor adapter for PNCE will be
designed after receipt of order and
drawing of requested motor type

**Motor side drive with a
timing belt**

Motor flange to be designed after
receipt of order and drawing of
requested motor type

**Couplings****Magnetic field sensors**

Mounting of the Magnetic field
sensor on PNCE requires a HPNCE
sensor holder.

See our website for technical specifications and other information.
Scan the QR code on the top of the page to go to the website.





PLANETARY GEARBOXES

PRODUCT OVERVIEW

Planetary gearboxes are used in mechanical and mechatronic drive systems with high requirements for high torque density and high precision. Our planetary and right-angle gearboxes from WITTENSTEIN are suitable for most applications and performance levels.



Maximum precision and dynamics combined with excellent torque density are in practice the most important conditions for reliable servo gearboxes. By offering selected parts of WITTENSTEIN's alpha series of planetary gears, we give you the opportunity to complement your linear unit with a planetary gearbox as well as an adapter kit connecting both of them.

Our planetary- and right-angle gearboxes can be used in virtually any application - from high-precision shafts in production systems to packaging machines where maximum productivity is a requirement. If you are looking for first-class quality and reliability, high precision and synchronization accuracy, power density in a class of its own, a long service life and extremely easy motor installation, then a planetary gearbox from WITTENSTEIN is the right product for you.

CHARACTERISTICS

- Different output options allow for individually tailored solutions.
The input can be adapted to virtually all existing servo motors and stepper motors.
Adaptations are currently defined for over 19,000 motor variants.
- Gear ratios between 3:1 and 100:1 are solved with 1- or 2-speed gearbox designs.
All gear ratios are in the form of integer ratios.
- Available in five different basic sizes 005-045 (gearbox diameter Ø40 to Ø160).
- Modular interfaces to both motor and application.

COMPLETE SOLUTION IN OUR CAD-CONFIGURATOR

Complement your linear RHL linear unit with a planetary gearbox and an adapter kit. In our CAD-configurator you can easily design a complete solution according to your needs.



Linear unit RHL80 + Adapter kit + Planetary Gearbox CPS015



PRODUCTS



Image by WITTENSTEIN

CP planetary gearbox

Ratio 3-100,
Backlash: $\leq 12 - 18$ arcmin.
For medium to low accuracy
and performance requirements.
Compact B14 output interface.



Image by WITTENSTEIN

CPS planetary gearbox

Ratio 3-100,
Backlash: $\leq 12 - 15$ arcmin.
For medium to low accuracy
and performance requirements.
Output interface cylindrical or with
B5-flange.



Image by WITTENSTEIN

CPSK bevel gearbox

Version of CPS with a 90° bevel
gear input stage.
Backlash $\leq 15 - 18$ arcmin.

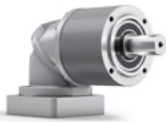


Image by WITTENSTEIN

CPK bevel gearbox

Version of CP with a 90° bevel
gear input stage.
Backlash $\leq 13 - 20$ arcmin.



Image by WITTENSTEIN

NP planetary gearbox

Ratio 3-100,
Backlash: $\leq 8 - 13$ arcmin.
For medium accuracy and per-
formance requirements. Compact
output interface.



Image by WITTENSTEIN

NPL planetary gearbox

Ratio 3-100,
Backlash: $\leq 8 - 10$ arcmin.
For medium accuracy and perfor-
mance requirements with higher
axial and radial shaft loads.



Image by WITTENSTEIN

NPS planetary gearbox

Ratio 3-100,
Backlash: $\leq 8 - 10$ arcmin.
For medium accuracy- and perfor-
mance requirements with higher
axial and radial shaft loads.



NPK bevel gearbox

Version of NP with a 90° bevel
gear input stage.
Backlash $\leq 11 - 15$ arcmin.

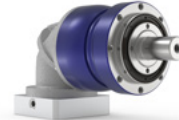


Image by WITTENSTEIN

NPLK bevel gearbox

Version of NPL with a 90° bevel
gear input stage.
Backlash $\leq 11 - 15$ arcmin.

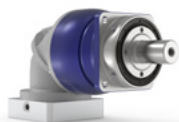


Image by WITTENSTEIN

NPSK bevel gearbox

Version of NPS with a 90° bevel
gear input stage.
Backlash $\leq 11 - 15$ arcmin.



Adapter kit RHL

Connects linear unit RHL with a
planetary gearbox.

See our website for technical specifications and other information.

Scan the QR code on the top of the page to go to the website.

ALUMINIUM APPLICATIONS

We have a complete range of aluminium profiles in all dimensions. Various fasteners and accessories facilitate simple adjustment or modification of constructions. The system makes it easy to build everything from simple racks, machine frames, cabinets and workbenches to fixtures for advanced automation.



ALUMINIUM PROFILE SYSTEM

Many profile types and a wide range of accessories such as hinges, angles, caps, handles, foot plates and castors.



BELT CONVEYORS

The belt conveyors are built on a frame of aluminium profiles. We have various belt types to fit specific applications. The motor can be placed at any position along the conveyor.



ALUMINIUM PROFILE SYSTEM

PRODUCT OVERVIEW

We have a complete range of aluminium profiles. The system offers great flexibility with profiles ranging from 16x40 mm to 160x160 mm. We also have angle and radius profiles, various fasteners and all imaginable accessories.

Our aluminium profile system makes it easy to build machine frames, workbenches, fixtures for advanced automation etc. The system is very easy to assemble and to adjust or expand. It is compatible with most common profile systems, which makes it even more adaptable and easy to combine with existing constructions.

We sell the profiles as they are, or in finished constructions. To facilitate, for example the transportation, we can assemble part of your construction which you then easily can complete when it has been delivered on-site.

We also offer technical support and are happy to assist with design proposals. Just as always, we promise you quick response, fast production time and reliable deliveries.

CHARACTERISTICS

- Simple to assemble
- Easy to adjust and expand
- Compatible with other profile systems
- Lightweight

APPLICATION AREAS

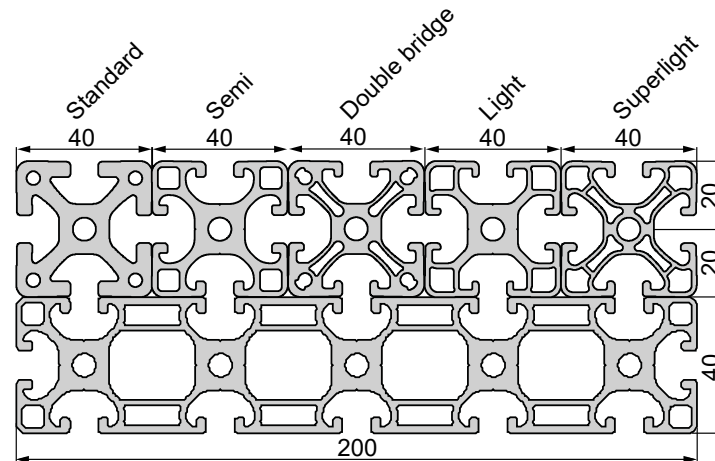
- Machine frames
- Stands
- Work stations
- Work benches
- Fixtures
- Material trolleys





PROFILE VERSIONS

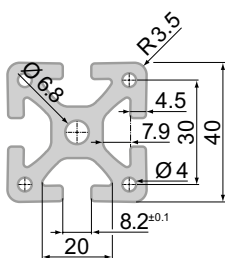
Our profile range includes different versions from Standard to Superlight. All profiles in the range are interchangeable.



- T-slot 8
- Center hole for M8

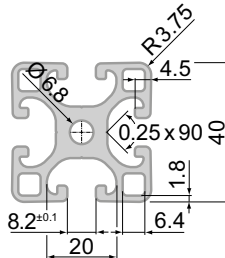
Standard

Most common



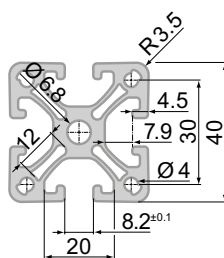
Semi

Most common



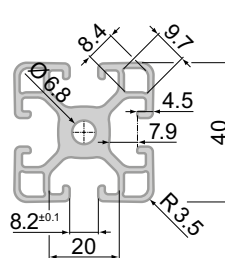
Double bridge

Usually upon request



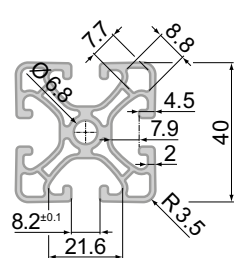
Light

Usually upon request



Superlight

Usually upon request



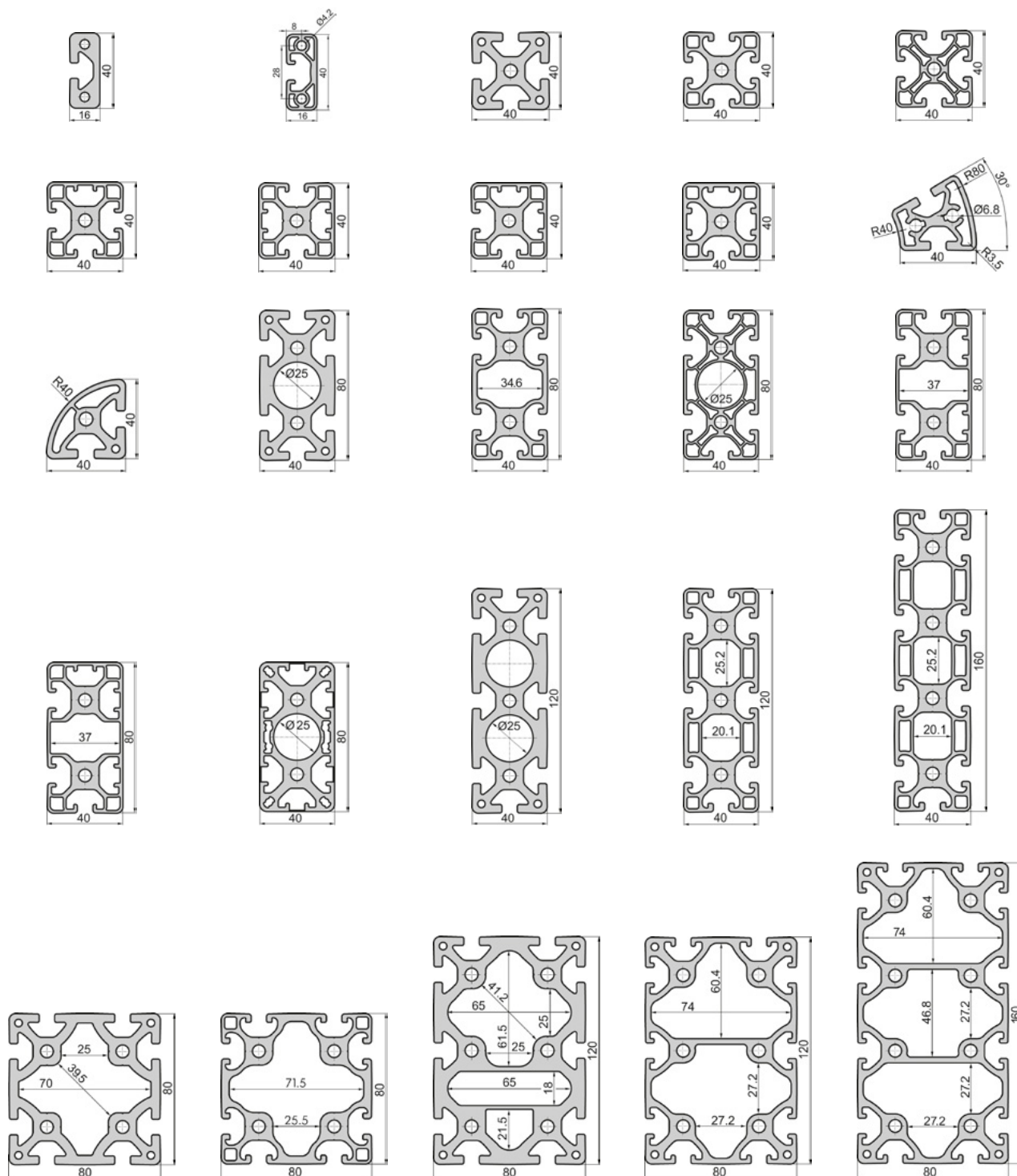
See technical information on our website regarding mechanical data,
manufacturing tolerances etc.

Scan the QR code on the top of the page to go to the website.



PROFILES

We have a wide range of aluminium profiles which includes different versions, for example Standard, Semi and Superlight. There are also profiles with one, two or three closed sides, angled or radiused surfaces or with tear-off closed grooves. Additionally profiles for specific applications such as doors, handrails and steps, and for holding panels or other sheet elements. Below you can see some of the most common profiles.



See our website for full product range and technical specifications.

Scan the QR code on the top of the page to go to the website.



FASTENERS & CONNECTORS

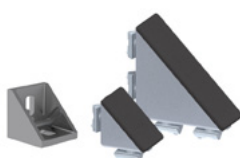
Our range of fastening elements include different types of fasteners, t-nuts, slot nuts, fixing angles and brackets.

See the complete range on our website.



Steel Angles & Angle Plates

Links two aluminium profiles at a right angle



Corner & Angle Brackets

Galvanised steel or die-cast zinc.
To connect two profiles or panels at right angles



Tie Plate

Of steel. Links two aluminium profiles



Automatic Connectors / Fasteners

For quick and easy connection of profiles



Central Fasteners

All-purpose universal fasteners and fasteners for parallel and transverse connections



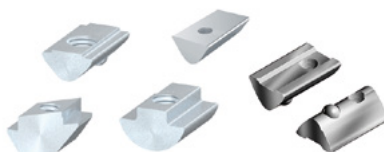
Standard Fasteners

For connection of aluminium profiles and for mounting surface elements in the profile slot.



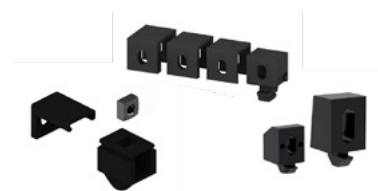
Universal Connectors / Fasteners

For connection of aluminium profiles



T-Nuts & Pivoting Slot Nuts

Fastening elements used inserted in profile slots. Held in position by a spring-loaded ball.



Fixing Blocks & Multi Pads / Blocks

For easy fastening of surface elements to aluminium profiles

See our website for full product range and technical specifications.

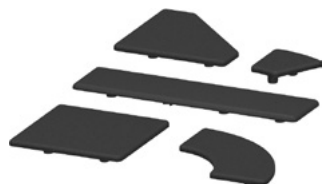
Scan the QR code on the top of the page to go to the website.



ACCESSORIES

We have hundreds of accessories to our aluminium profile system. This is just a selection of the most commonly used.

Check our website to see the complete range.



Aluminium Profile Caps

Caps most profile types



Handle

Handles in plastic and aluminium for for doors, drawers etc.



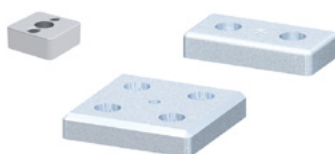
Hinges

In steel, plastic, zinc and aluminium for machines, protective guardings and more.



Joints

For connecting two profiles or surface elements at an angle. Made of zinc or aluminium.



Foot Plates

For fixing profiles to castors, adjustable feet etc.



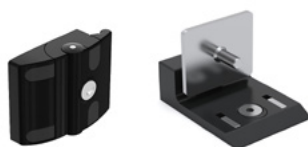
Feet

Swiveling, leveling and adjustable feet in steel, die-cast zinc or aluminium.



Castors

With swivel head, bolt hole and lock.



Door Lock & Door Stops

Reliable and compact door locks, magnetic door stops etc.



Sealing Rubbers, Clamping & Cover Strips

For covering profile slots, clamping sheet elements

See our website for full product range and technical specifications.

Scan the QR code on the top of the page to go to the website.



ADDITIONAL PRODUCTS

On our website you can find many other components associated to the aluminium profile systems. Below are a few samples.

WIRING DUCTS



Wiring Ducts

Duct and duct cover for cables etc.



Wiring Duct Caps

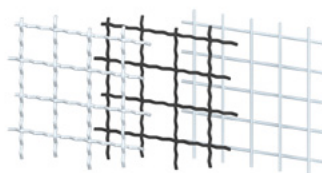
End caps for wiring ducts.

PANELS & SHEET MATERIAL



Panels

Sheet material in polycarbonate, cellulose, plywood or plexiglass for protective walls, workshops and laboratory benches etc.



Weld Mesh & Mesh Steel

Wire mesh for doors, protective walls etc.



Aluminum Sheet

Sheet material in aluminium for protective walls etc. checker plate, perforated or laminated.

TOOLS



Drill Jigs

For positioning the hole for the central fastener housing



Drills

Short step and spiral drills for drilling profiles

See our website for full product range and technical specifications.
Scan the QR code on the top of the page to go to the website.



BELT CONVEYORS

PRODUCT OVERVIEW

Here at Rollco we pride ourselves in being able to meet the needs of every customer as quickly and efficiently as possible, and our conveyor belt series is no exception.

As a standard, the conveyor series is built upon an aluminium profile base with a stainless-steel slider bed and a mix of aluminum and steel components. We offer a wide range of standard belts. Should you need more specialized belts, please contact us. We have more options available to cover all requirements.

Drive pulleys and head/ tail pulleys are generally trapezoidal crowned for belt tracking and are made from either aluminium or steel. Alternatively, or additionally, a guiding profile can be added to the belt.

The conveyors are available in two sizes, BF40 and the larger BF80. The size is often determined by the accumulated weight, size, or amount of the goods needed to be transported and are either end- or center-driven. Center-drives are always preferable for reversing operations.

Our belt conveyors are prepared for production in a handful of standard widths. The conveyor length are always custom. Further customization is possible on request, such as special width, alternative drive interface, parallel driven units and more.





PRODUCTS



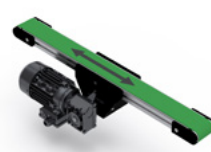
BF40E

Standard with end drive



BF40EIK

Knife edge in feed with end drive



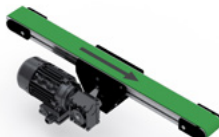
BF40M

Standard with middle drive



BF40MDK

Double knife edge with middle drive



BF40MIK

Knife edge in feed with middle drive



BF40MOK

Knife edge with out middle drive



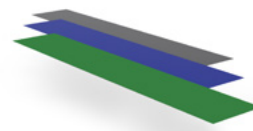
BF80E

Standard with end drive



Motors

Standard motors for BF40 & BF80 conveyors



Belts

Standard belts for a wide range of applications



Belt Profiles

Profiles for belts



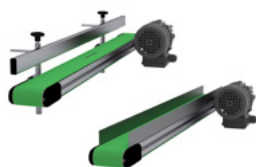
Tracking Guides

For applications where transversal forces occur



Conveyor Stands

Guaranteed 100% compatible with the conveyor



Conveyor Guides

For diverting, accumulating or guiding goods



Conveyor Belt Covers

Hoods and covers



Support Kits

Used to take up belt slack

See our website for technical specifications and other information.
Scan the QR code on the top of the page to go to the website.



BELT CONVEYOR EXAMPLES





**ALWAYS THE RIGHT
SOLUTION AT THE RIGHT TIME.**

With reliability, competence and commitment Rollco rapidly delivers the right solutions and components to create safe and cost-effective automation and linear movement.

ROLLCO

LINEAR SOLUTIONS **YOUR** WAY

Rollco AB
Box 22234
Ekvändan 3
250 24 Helsingborg
Sweden
Tel. +46 42 150040
www.rollco.se

Rollco A/S
Skomagervej 13 E
7100 Vejle
Denmark
Tel. +45 7552 2666
www.rollco.dk

Rollco Oy
Sarankulmankatu 12
33900 Tampere
Finland
Tel. +358 207 57 97 90
www.rollco.fi

Rollco Norge AS
Industrigata 6
3414 Lierstrada
Norway
Tel. +47 32 84 00 34
www.rollco.no

Rollco Taiwan
No. 28, Lane 125, Da-an Road
Shulin District 238
New Taipei City, Taiwan
Tel. +886-2-8687-2726
Fax +886-2-8687-2720
www.rollco-tw.com