

Magnetic Catch Plates

Application:

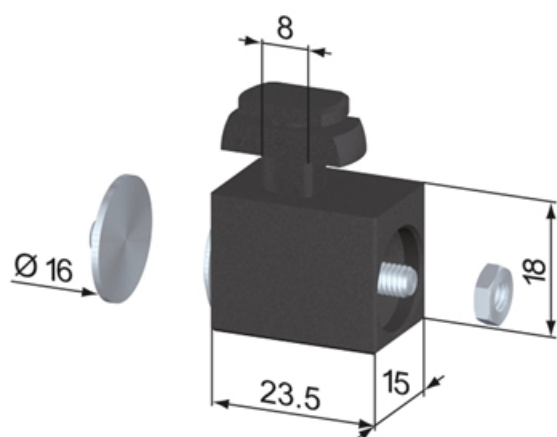
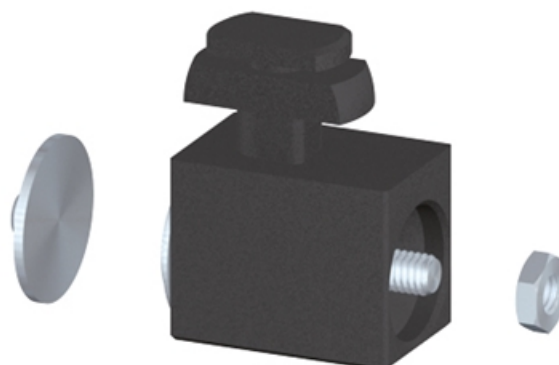
Suitable for swing doors and windows. Steel stop plate is secured by using an industrial adhesive.

Suitable for a panel thickness of max 8 mm.

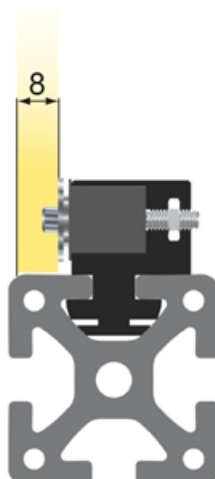
Adhesive force: 5 N

System: 40 - Slot 8

Type: Magnetic Catch Plates & Door Stops



SZ1550S



General Data

Designation	Description	System	Weight (g)
SZ1551S	Magnetic Catch Plate 2 mm	40 - Slot 8	20
SZ1552S	Magnetic Catch Plate 4 mm	40 - Slot 8	20
SZ1550S	Magnetic Catch Plate 6 mm	40 - Slot 8	20
SZ1553S	Magnetic Catch Plate 8 mm	40 - Slot 8	20