

## Hangers 40

### Application:

For hanging frame elements to vertical profiles to make protective guardings or removable panels. Mounting dimension per side: 20.5 - 23.0 mm

### SZ0682Z includes:

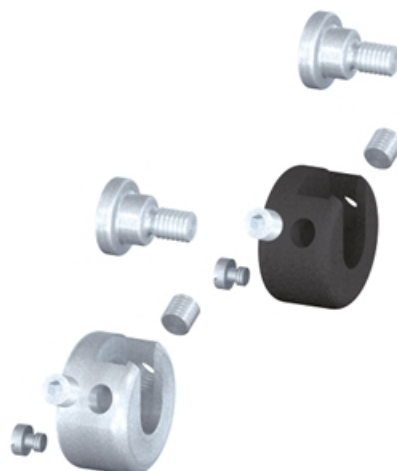
2x t-nut M 8 / ball-type, push-in

1x cap head screw M 8 x 12, zinc-plated

1x washer Ø 8 mm

**System:** 40 - Slot 8

**Type:** Hangers



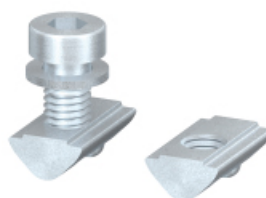
**SZ0600V**



**SZ0600S**



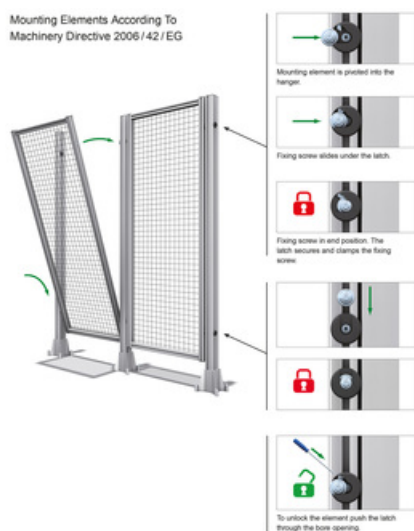
**SZ0601S**



**SZ0682Z**

# Hangers 40

Mounting Elements According To  
Machinery Directive 2006/42/EG



## General Data

Designation	Description	System	Material	Weight (g)
<b>SZ0600V</b>	Hanger 40, natural	40 - Slot 8	Steel, zinc-plated	115
<b>SZ0600S</b>	Hanger 40, black	40 - Slot 8	Steel, zinc-plated black	115
<b>SZ0601S</b>	Hanger 40 PA	40 - Slot 8	POM, black	40
<b>SZ0682Z</b>	Fixing Set For Hangers 40	40 - Slot 8	-	28