

Corner Fasteners

Application:

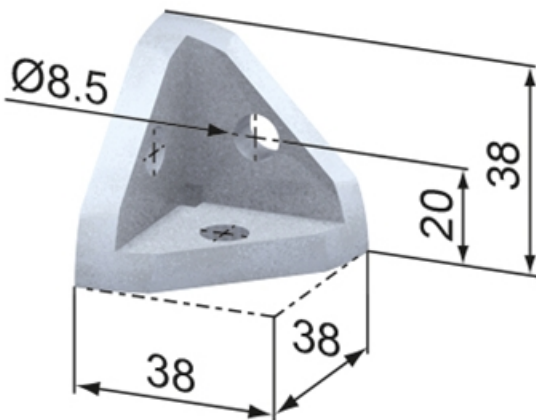
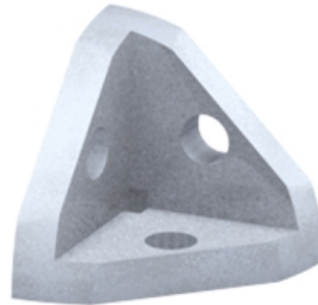
For right-angled fixing of profiles.

Supply:

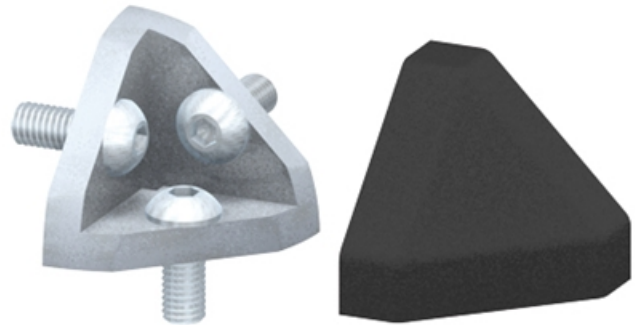
Corner fastener sets contain the corner fastener 40 x 40 45°, three button head screws M 8 x 20, ISO 7380, and the appropriate cap.

Material: GDZn (zinc diecasting), natural & PA 6, black

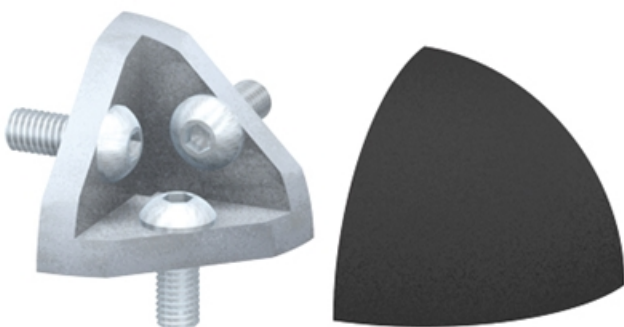
System: 40



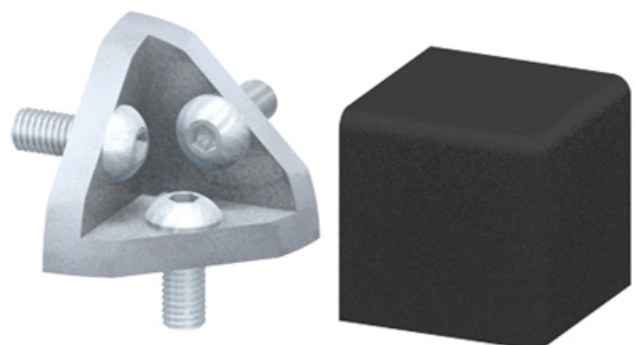
SZ0931S



SZ0930S



SZ0932S



SZ0933S

Variant Data

Designation	Description	Weight (g)
SZ0931S	Corner Fastener 40 x 40 45°	89
SZ0930S	Corner Fastener Set 40 x 40 45°	127
SZ0932S	Corner Fastener Set 40 x 40, round	127
SZ0933S	Corner Fastener Set 40 x 40, edge	135