

Table of contents

- Angle Plate, steel
- Corner Brackets Zn 40
- Tie Plate, steel
- Standard Fastening Set
- Standard Fastener Set 8K
- Universal Fastener
- Universal Butt Fastening Set 8
- Central Fastener 40 S / SV
- Central Fastener 40 SL / SVL
- Central Fastener 40 SVL
- Automatic Fastening Set 40
- Automatic Butt Connector
- T-Nuts, ball-type, push-in
- T-Nuts, ball-type, push-in, flat
- T-Nuts, ball-type, slide-in
- Square T-Nuts
- Fixing Blocks
- Fixing Angles
- Fixing Angles 40
- Fixing Angles 70 x 70
- Angles 120 x 120
- Clamp Angles
- Mounting Angle
- Corner Fasteners
- Round Corners
- Gusset Plates AL
- Attachment Plates
- Attachment Plates, angled
- Central Fastener 40 EL / EQ
- Central Fastener G 30 SS / G 45 SS
- Central Fastener 40 90°
- Central Fastener 40 120°
- Central Fastener 40 135°
- Central Fastener 40 G
- Central Fastener 40 GC / GCV
- Dummy Plug
- Pneumatic Fastener 40
- Attachment Screws
- Potential Equalizers
- Profile Cap for SV drillings

Table of contents

- **T-Nuts, push-in**
- **T-Nuts, slide-in**
- **T-Nuts, steel / plastic**
- **T-Nut Profile, slide-in**
- **T-Nut Profile, push-in**
- **T-Nut Profile, aluminium, slide-in**
- **Double T-Nuts 40/20**
- **Special T-Nut**
- **Panel Bracket**
- **Earthing Strap**
- **Angle 40 x 60**
- **Angle 60 x 70**
- **Bolt G-type**

Angle Plate, steel

Universally applicable attachment bracket. Links two aluminium profiles at a right angle.

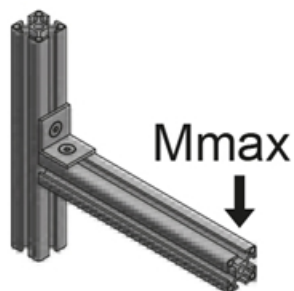
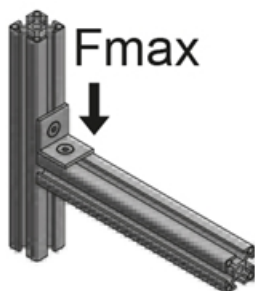
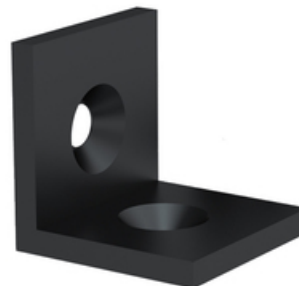
Mounting material:

M8 × 14 countersunk screw (DIN7991), M8 slot 8 slot nut

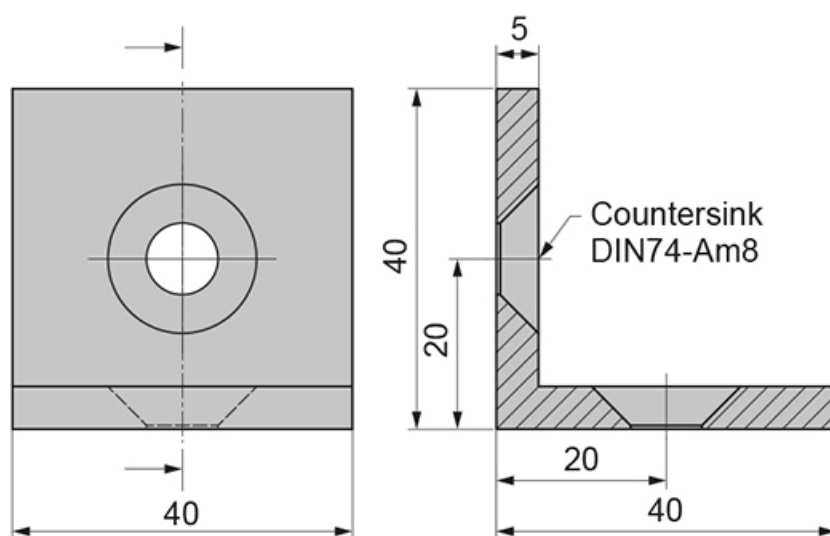
Material: Steel, black

System: 40 - Slot 8

Type: Angles Brackets and Corners; Fasteners



General Data



PZ1125

Designation	Description	System	Fmax (N)	Mmax (Nm)
PZ1125	Bracket 40 × 40	40 - Slot 8	1500	50

Corner Brackets Zn 40

Application:

For right-angled fixing of profiles without the need of machining the profiles.

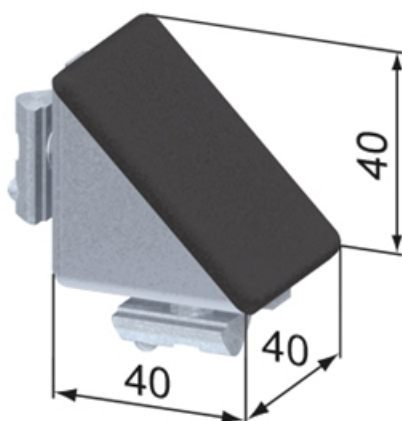
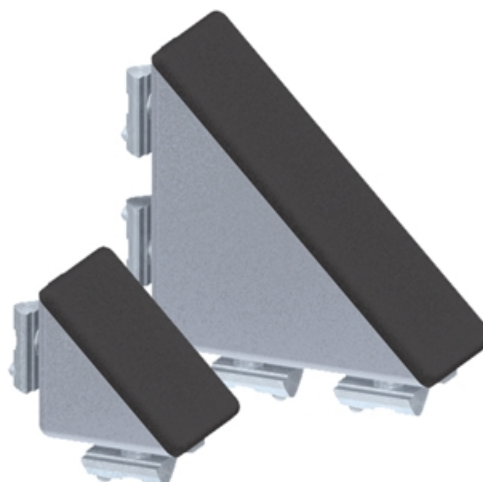
The set contains:

- Corner Bracket Zn
- Profile Cap Corner Zn
- Button head screws M8x16
- T-Nuts M8/ball-type, push-in
- Security washers D=8mm

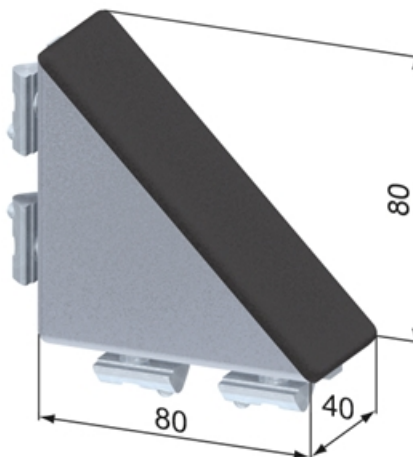
Material: GDZn (zinc diecasting), natural

System: 40 - Slot 8

Type: Angles Brackets and Corners; Fasteners



SZ0970N



SZ0972N



Corner Brackets Zn 40



General Data

Designation	Description	System	Weight (g)	Remark
SZ0970N	Set Corner Bracket Zn 40 x 40, complete	40 - Slot 8	135	Complete set
SZ0972N	Set Corner Bracket Zn 40 x 80, complete	40 - Slot 8	388	Complete set

Tie Plate, steel

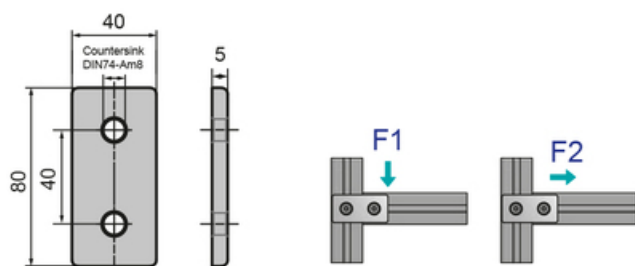
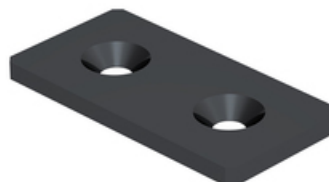
Application:

Universally applicable attachment elements for interconnecting profiles.

Material: Steel, black

System: 40 - Slot 8

Type: Angles Brackets and Corners; Fasteners



PZ1120

General Data

Designation	Description	System	F1 (N)	F2 (N)	Weight (g)
PZ1120	Tie Plate 40 x 80, steel	40 - Slot 8	850	900	90

Standard Fastening Set

Application:

An inexpensive and simple connection for two profiles. Teeth crack the anodized coating and create a reliable and conductive link. A fixed joint similar to SV1900V this connector comes instead as a set including screw and anti-rotation element.

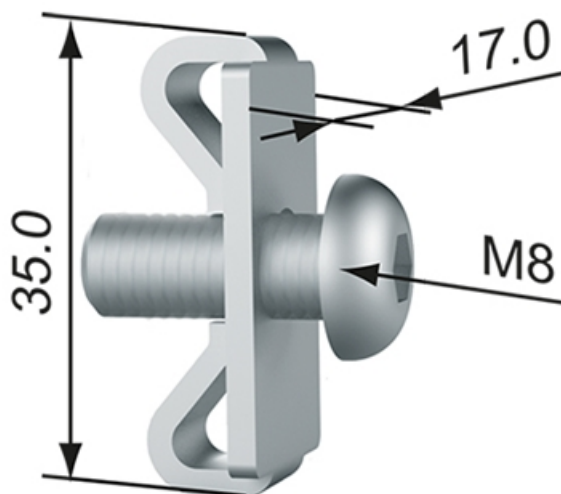
Supply:

1 x ISO 7380 M8x20 fillister head screw

Material: Steel, galvanised

System: 40 - Slot 8

Type: Fasteners



General Data

Designation	System	Torque (Nm)	Weight (g)
PV1022	40 - Slot 8	25	14

Standard Fastener Set 8K

For mounting surface elements in the profile slot. An added benefit of the connector set is that you can do without extra notches in the surfaces. The connector supports a maximum tightening torque of 25.0 Nm.

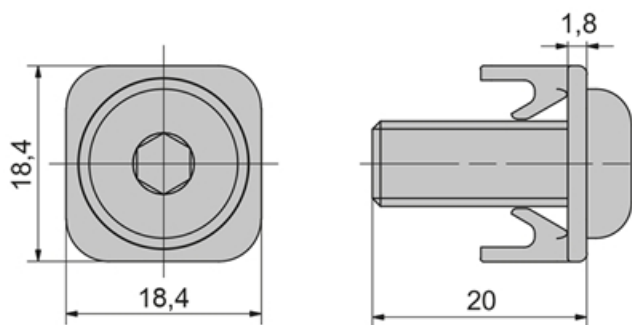
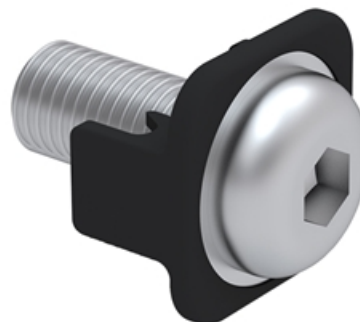
To provide access to the screw head, we recommend drilling a hole ($D = 7.0 \text{ mm}$) every 20.0 mm.

Set includes a galvanised M8x20 fillister head screw.

Material: Spacer, black POM. Fillister head screw, galvanised steel.

System: 40 - Slot 8

Type: Fasteners



General Data

Designation	Description	System	Tightening Torque (Nm)
PV1021	Standard Fastener Set 8K	40 - Slot 8	25

Universal Fastener

Application:

Links two aluminium profiles.

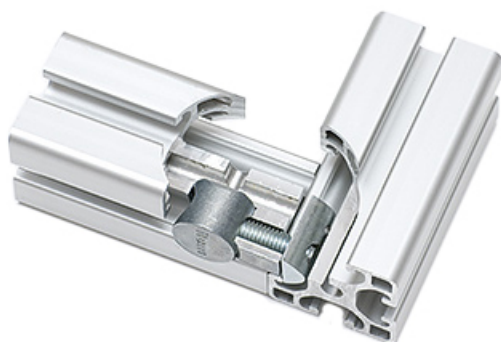
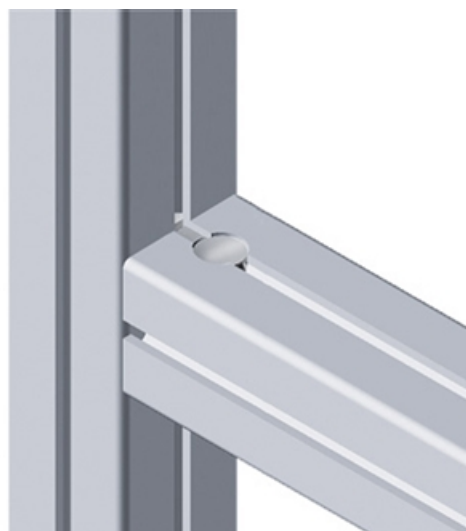
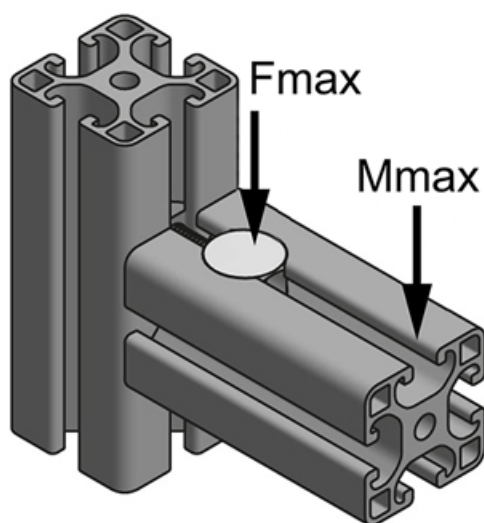
Supply:

Set of universal fastener with guide lug and 8 mm hole. M8 slot nut and cheese head screw included.

Material: Die-cast zinc, galvanised

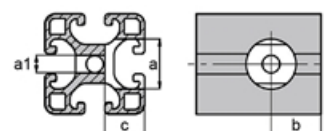
System: 40 - Slot 8

Type: Fasteners

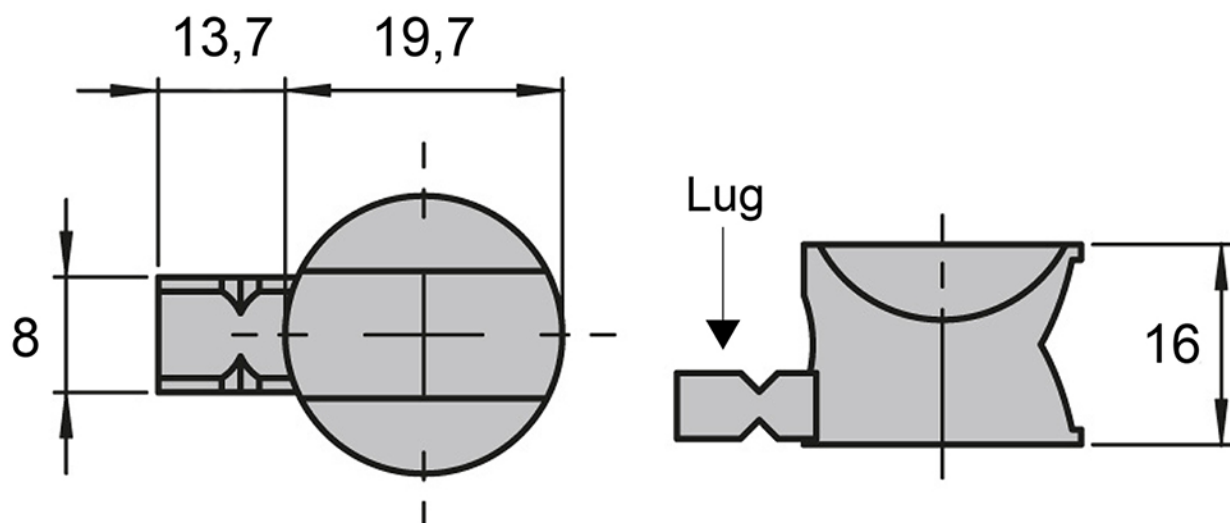


Machining:

Drill hole (a)	Ø 20 mm
Drill hole (a1)	Ø 7 mm
Distance (b)	20 mm
Depth (c)	16 mm



General Data



Designation	Description	System	Fmax (N)	Mmax (Nm)
PV1015	Universal Fastener Set 8 with lug	40 - Slot 8	1750	80

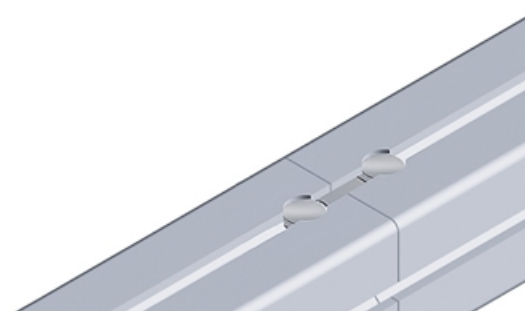
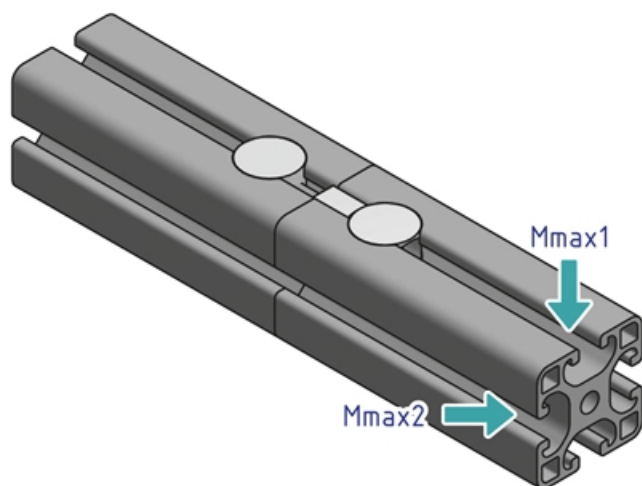
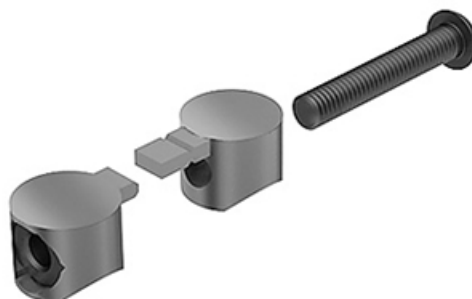
Universal Butt Fastening Set 8

Links the face ends of two aluminium profile from the same series. Supplied with mounting kit. Set consists of 2 universal connectors, 1 M8 × 45 fillister head screw (ISO7380), 1 M8 nut (DIN934).

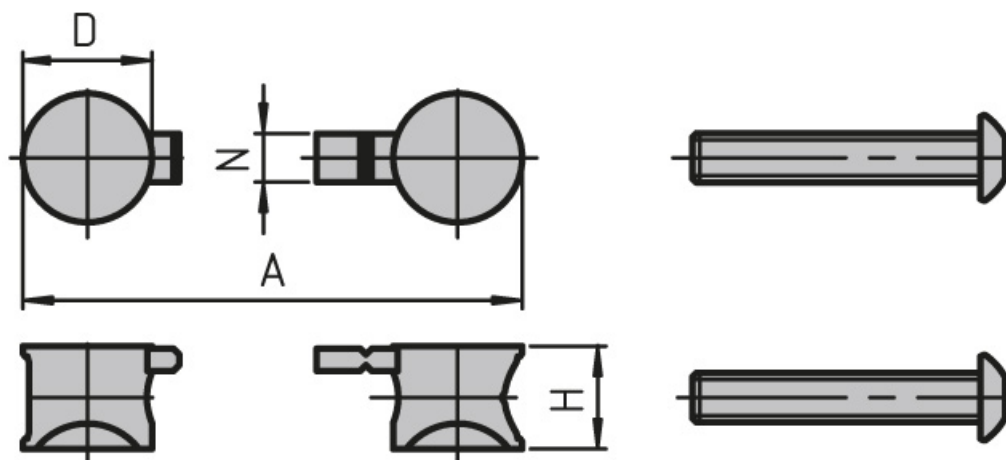
Material: Galvanised die-cast zinc

System: 40 - Slot 8

Type: Fasteners



General Data



Designation	System	A	D	H	Mmax1 (Nm)
PV1030	40 - Slot 8	60	19.7	16	150

Designation	Mmax2 (Nm)
PV1030	150

Central Fastener 40 S / SV

Application:

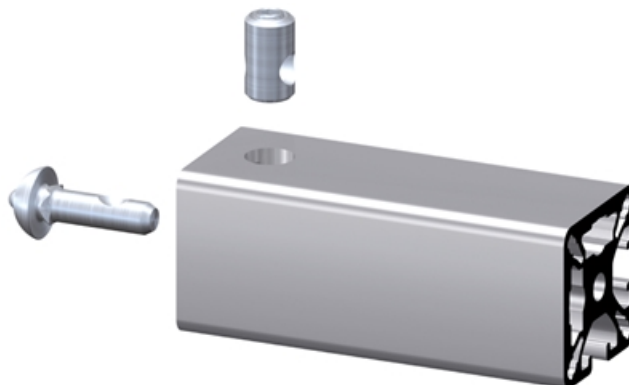
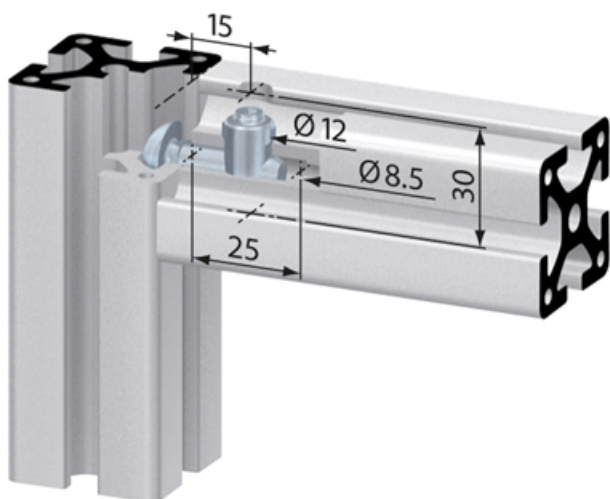
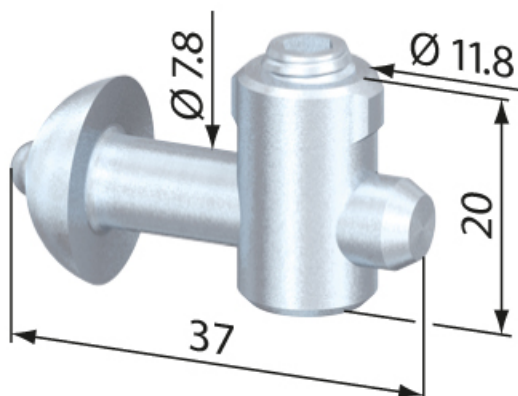
All-purpose universal fastener. The slide-in anchor is held in position in the profile groove by a spring-loaded ball in the opposing profile t-slot. The SV fasteners have an anti-twist feature. The SV ON fastener is to be used with closed profiles.

Assembly:

Bore hole for the barrel housing: $\varnothing 12$ mm, 15 mm from profile end, 30 mm deep. Bore for center hole on end of profile for anchor: $\varnothing 8.5$ mm, 25 mm deep.

System: 40 - Slot 8

Type: Fasteners



General Data

Designation	Description	System	Material	Weight (g)
SV1001V	Central fastener 40 S	40 - Slot 8	Steel, zinc-plated	28
SV1211V	Central fastener 40 SV	40 - Slot 8	Steel, zinc-plated	28
SV1212V	Central fastener 40 SV ON	40 - Slot 8	Steel, zinc-plated	27
SV1350V	Central fastener 40 SV VA	40 - Slot 8	Stainless steel	30

Central Fastener 40 SL / SVL

Application:

Special applications. The slide-in anchor, with an anti-twist feature, can be fixed in the profile t-slot at any point. The anchor is held in position by a spring-loaded ball in the opposing profile t-slot. The SVL fastener has an anti-twist feature. Both fasteners can be used for parallel and transverse connections.

Assembly:

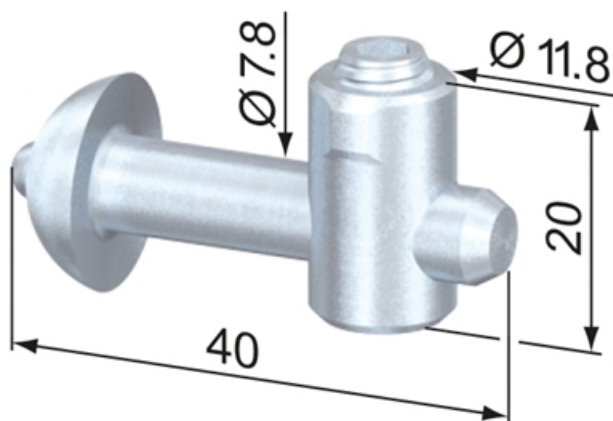
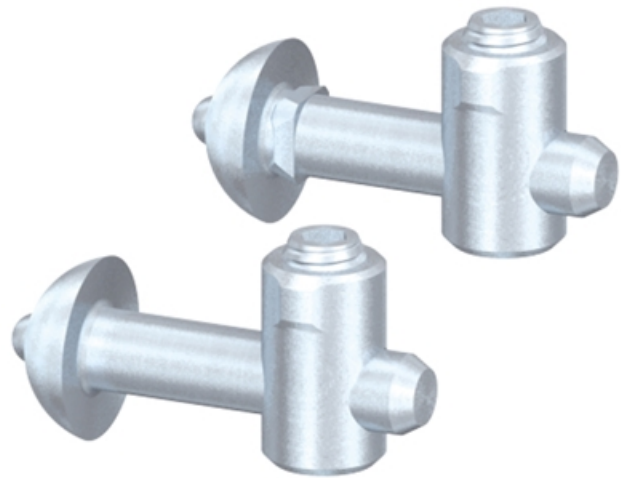
Bore hole for the barrel housing: $\varnothing 12$ mm, 20 mm from profile end, 30 mm deep.

Bore for anchor in the profile: $\varnothing 8.5$ mm, 20 mm from profile end, 25 mm deep.

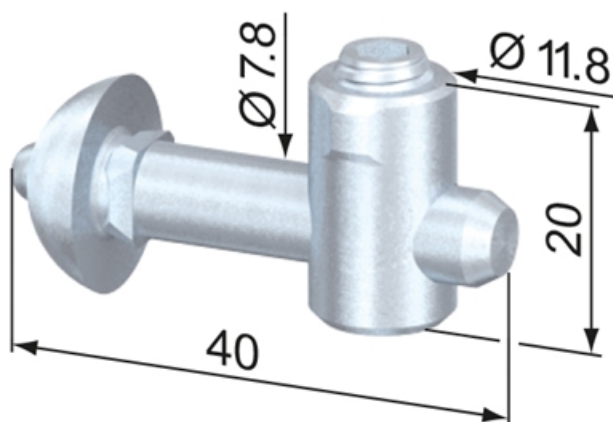
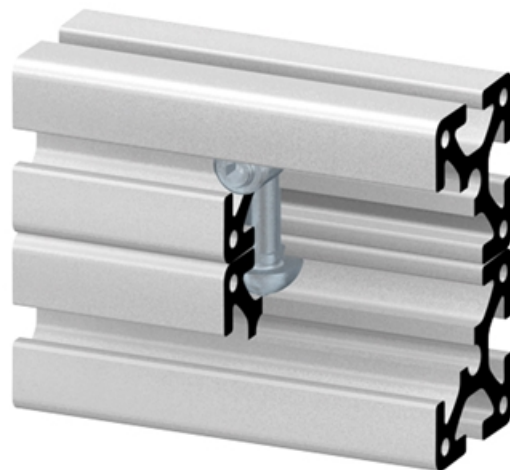
Material: Steel, zinc-plated

System: 40 - Slot 8

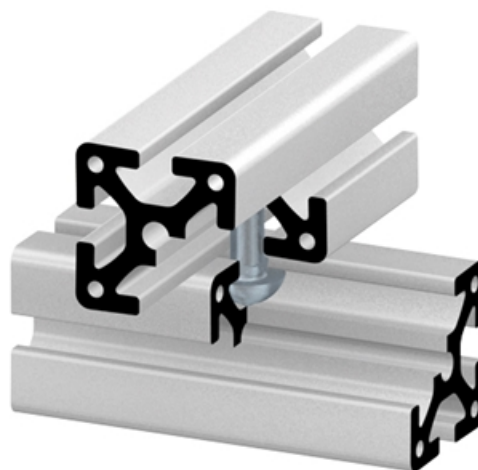
Type: Fasteners



SV1213V



SV1221V



General Data

Designation	Description	System	Weight (g)
SV1221V	Central Fastener 40 SVL	40 - Slot 8	31

Central Fastener 40 SVL

Application:

All-purpose universal fastener. The slide-in anchor is held in position in the profile groove by a spring-loaded ball in the opposing profile t-slot. The SV fasteners have an anti-twist feature.

Assembly:

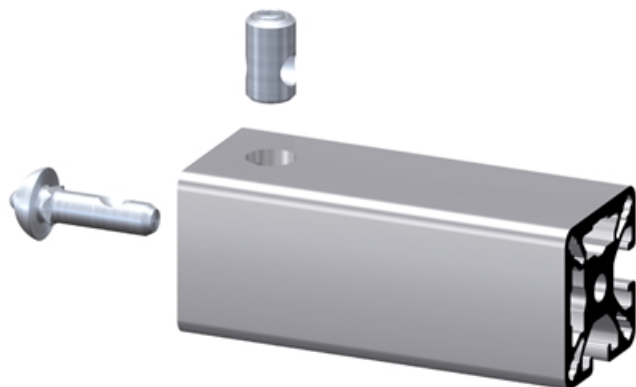
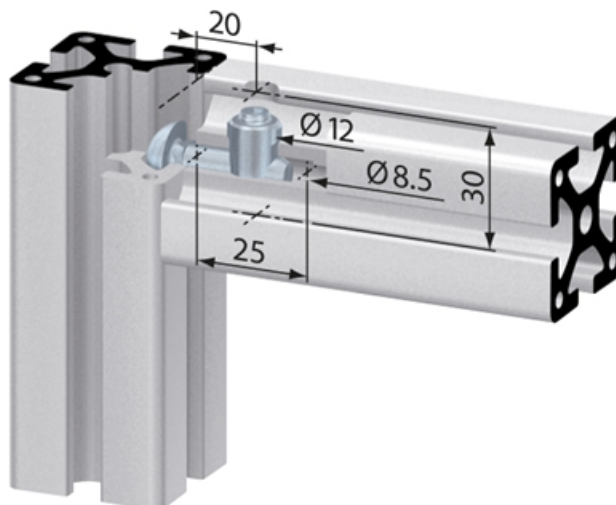
Bore hole for the barrel housing: $\varnothing 12$ mm, 20 mm from profile end, 30 mm deep.

Bore for center hole on end of profile for anchor: $\varnothing 8.5$ mm, 25 mm deep.

Material: Steel, zinc-plated

System: 40 - Slot 8

Type: Fasteners



General Data

Designation	Description	System	Weight (g)
SV1222V	Central fastener SVL90	40 - Slot 8	31

Automatic Fastening Set 40

Application:

The automatic fastening set is quick and easy to use without modifying the profiles. Universal force-fit link for all profiles and option of moving them afterwards because the fastening sets are fitted in single profiles only. There is no restriction on installing them in existing constructions later.

Supply:

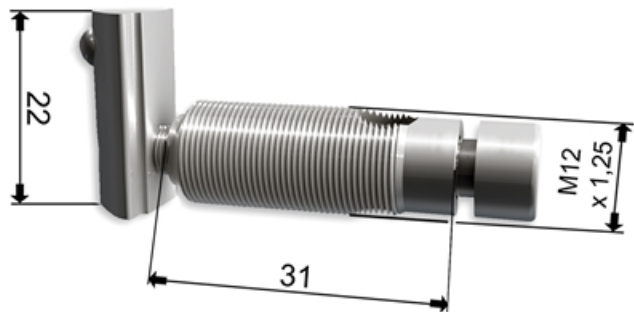
1 x socket head screw M6x40, galvanized
 1 x slot nut M6 / ball-type push-in, galvanized,
 1 hollow screw automatic tensioner, galvanized

Assembly:

Insert the cylinder head screw M6x40 head first into the profile groove. Then the self-tapping hollow screw is screwed into the profile groove on the face side. You should use a lubricant for this. Then the slot nut M6 / ball-type push-in is plugged into the profile to be connected and the cylinder screw tightened. We recommend installing them in pairs.

System: 40 - Slot 8

Type: Fasteners



General Data

Designation	Description	System
PV1102	Automatic Fastening Set 40	40 - Slot 8

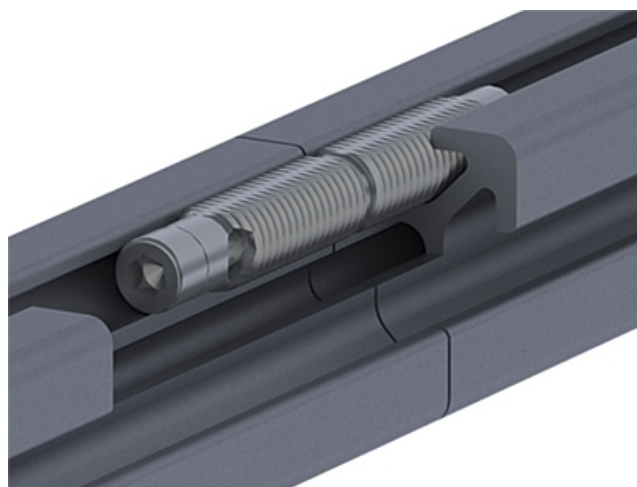
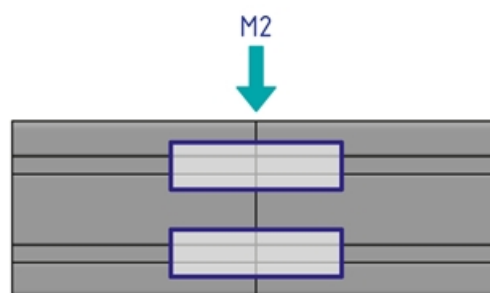
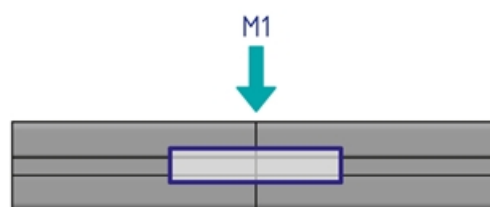
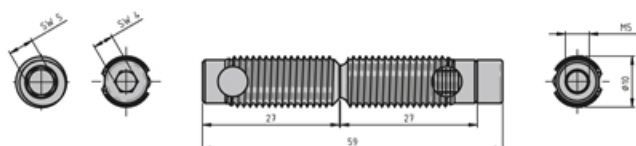
Automatic Butt Connector

Use the automatic butt connector to quickly and easily link the face ends of two profiles from the same series without having to machine the profiles beforehand. Best practice is to use the automatic butt connectors in pairs. You may need several pairs, depending on the size and load on the profiles. Package includes the screw and cutting bush.

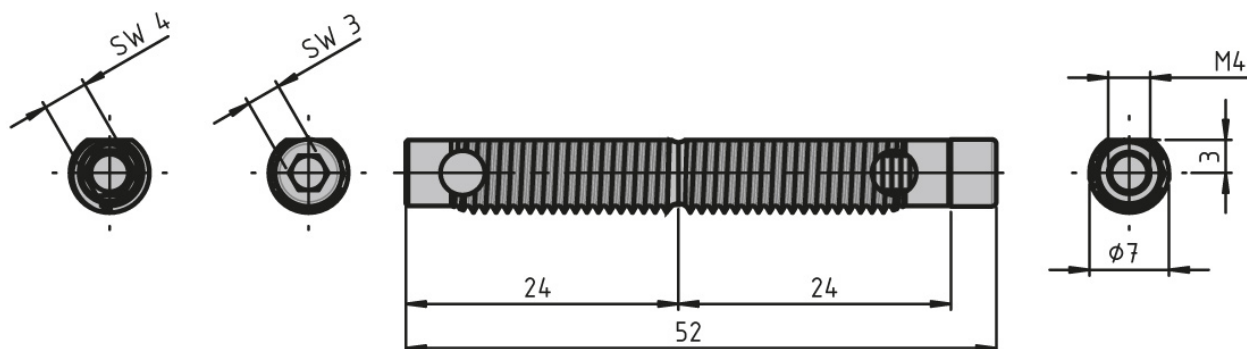
Note: The load values refer to connectors installed in pairs

System: 30 - Slot 6; 20 - Slot 5; 40 - Slot 8

Type: Fasteners



General Data



Designation	Description	System	M (Nm)	F (N)
PV4040	Set of automatic butt connectors	20 - Slot 5	22	1500
PV1209	Set of automatic butt connectors	20 - Slot 5	22	1500
PV3050	Set of automatic butt connectors	30 - Slot 6	45	1800
PV1210	Set of automatic butt connectors	30 - Slot 6	45	1800
PV1105	Set of automatic butt connectors	40 - Slot 8	140 (40x40L) / 170 (40x40)	4500

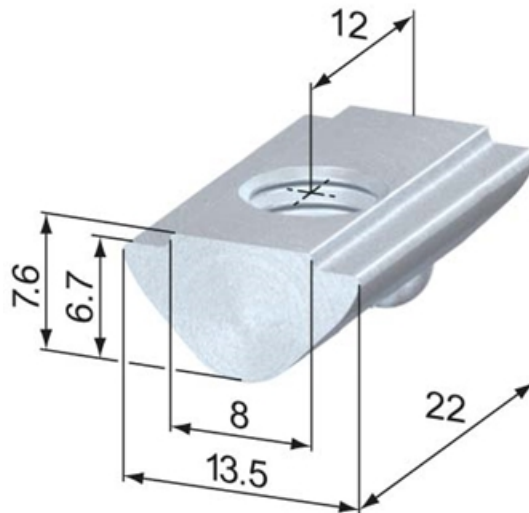
T-Nuts, ball-type, push-in

Application:

T-nut for swiveling into the t-slot. Fits into the t-slot at any point. Held in position by a spring-loaded ball. Raised area fits into the t-slot to stop twisting.

System: 40 - Slot 8

Type: T-nuts



T-Nuts, slide-in



T-Nuts, push-in



T-Slot Strength

Information in regards to the maximum allowable t-slot load capability F. These values already include a safety factor ($S > 2$) against plastic deformation.

Profile type	Max. pull charge F
standard	5000 N
double br.	3250 N
semi	2500 N
light	2000 N
superlight	1750 N



General Data

Designation	System	Material	Thread	Weight (g)
SV2110V	40 - Slot 8	Steel, zinc-plated	M3	12
SV2112V	40 - Slot 8	Steel, zinc-plated	M4	11
SV2114V	40 - Slot 8	Stainless steel	M4	11
SV2100V	40 - Slot 8	Steel, zinc-plated	M5	11
SV2104V	40 - Slot 8	Stainless steel	M5	11
SV2101V	40 - Slot 8	Steel, zinc-plated	M6	10
SV2105V	40 - Slot 8	Stainless steel	M6	10
SV2102V	40 - Slot 8	Steel, zinc-plated	M8	9
SV2106V	40 - Slot 8	Stainless steel	M8	9

T-Nuts, ball-type, push-in, flat

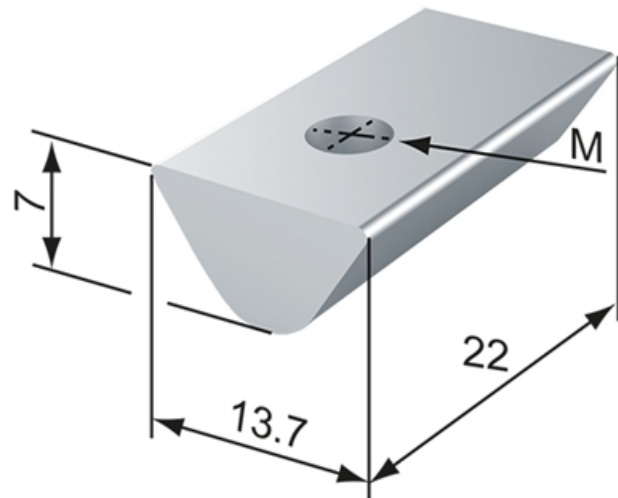
Application:

T-nut for swiveling into the t-slot. Fits into the t-slot at any point. Held in position by a spring-loaded ball.

Material: Steel, zinc-plated

System: 40 - Slot 8

Type: T-nuts



T-Nuts, slide-in



T-Nuts, push-in



T-Slot Strength

Information in regards to the maximum allowable t-slot load capability F. These values already include a safety factor ($S > 2$) against plastic deformation.

Profile type	Max. pull charge F
standard	5000 N
double br.	3250 N
semi	2500 N
light	2000 N
superlight	1750 N



General Data

Designation	System	Thread	Weight (g)
PN1030	40 - Slot 8	M4	11
PN1035	40 - Slot 8	M5	11
PN1040	40 - Slot 8	M6	10
PN1045	40 - Slot 8	M8	9

T-Nuts, ball-type, slide-in

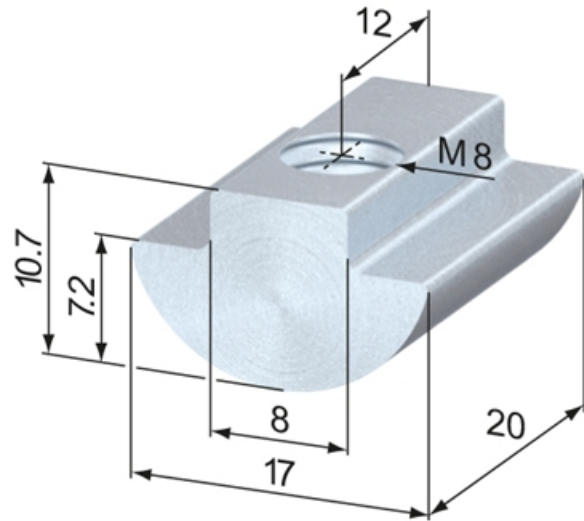
Application:

Slides in the t-slot from the end of the profile and is held in position by a spring-loaded ball. The wide supporting surface of the t-nut makes it suitable for higher fastening forces. (SV2003V is machined after threading.)

Material: Steel, zinc-plated

System: 40 - Slot 8

Type: T-nuts



T-Nuts, slide-in



T-Nuts, push-in



T-Slot Strength

Information in regards to the maximum allowable t-slot load capability F. These values already include a safety factor ($S > 2$) against plastic deformation.

Profile type	Max. pull charge F
standard	5000 N
double br.	3250 N
semi	2500 N
light	2000 N
superlight	1750 N



General Data

Designation	System	Thread	Weight (g)
SV2000V	40 - Slot 8	M5	17
SV2001V	40 - Slot 8	M6	17
SV2002V	40 - Slot 8	M8	15
SV2003V	40 - Slot 8	M8 S	14

Square T-Nuts

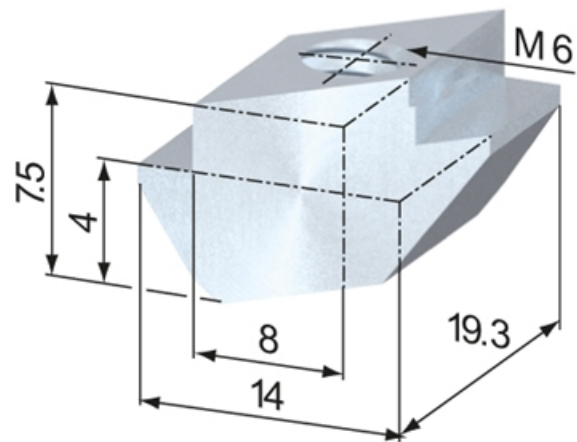
Application:

T-nut for swiveling into the t-slot. Fits into the t-slot at any point.

Material: GDZn (zinc die casting)

System: 40 - Slot 8

Type: T-nuts



T-Nuts, slide-in



T-Nuts, push-in



T-Slot Strength

Information in regards to the maximum allowable t-slot load capability F. These values already include a safety factor ($S > 2$) against plastic deformation.

Profile type	Max. pull charge F
standard	5000 N
double br.	3250 N
semi	2500 N
light	2000 N
superlight	1750 N



General Data

Designation	System	Thread
SV2179N	40 - Slot 8	M5
SV2180N	40 - Slot 8	M6

Fixing Blocks

Application:

To mount panels to profiles with a t-slot width of 8mm. An M6 screw is required for installation.

SZ1512S for 2 mm panels.

SZ1514S for 4 mm panels.

SZ1516S for 6 mm panels.

SZ1518S for 8 mm panels.

SZ1510S facilitate the entire 2 - 8 mm range of panels.

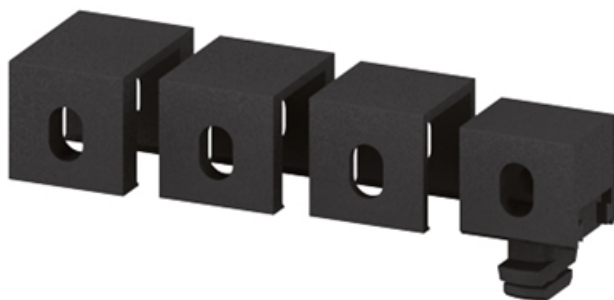
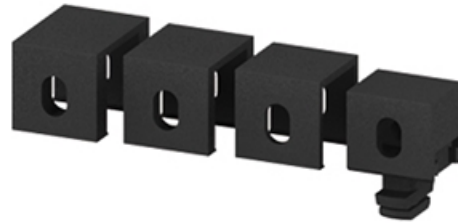
Acc.:

SZ1510S fixing block 40 Vario is a complete set. It includes four different sized, removable caps to accommodate panels with 2 - 8 mm thickness.

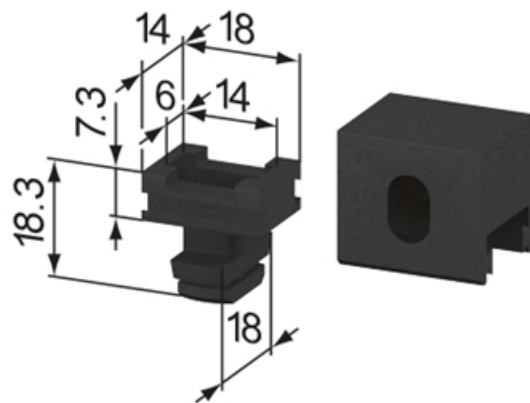
Material: PA, black

System: 40 - Slot 8

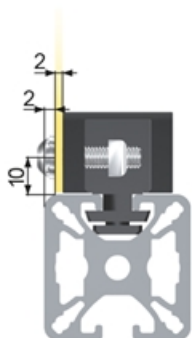
Type: Fixing Blocks/Fastening Elements



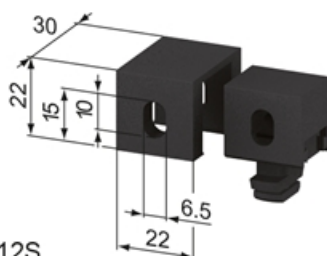
SZ1510S



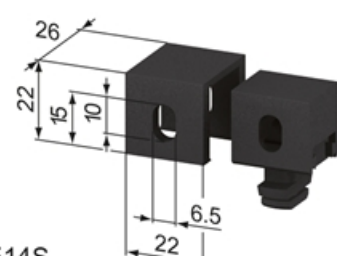
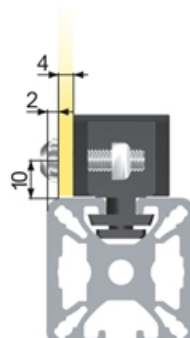
Insert for SZ1510S



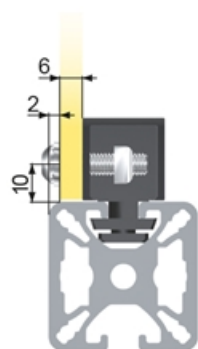
SZ1512S



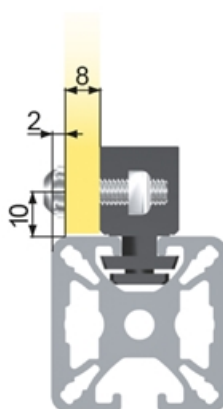
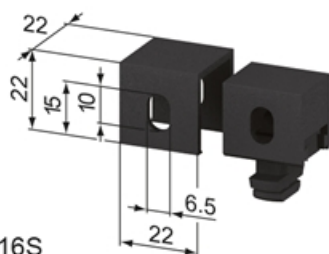
SZ1514S



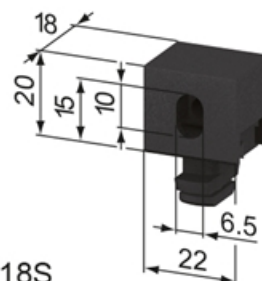
Fixing Blocks



SZ1516S



SZ1518S



General Data

Designation	Description	System	Weight (g)	Compatible with
SZ1510S	Fixing Block 40 vario	40 - Slot 8	27	2-8 mm panels
SZ1512S	Fixing Block 40 / 2	40 - Slot 8	19	2 mm panels
SZ1514S	Fixing Block 40 / 4	40 - Slot 8	16	4 mm panels
SZ1516S	Fixing Block 40 / 6	40 - Slot 8	14	6 mm panels
SZ1518S	Fixing Block 40 / 8	40 - Slot 8	10	8 mm panels

Fixing Angles

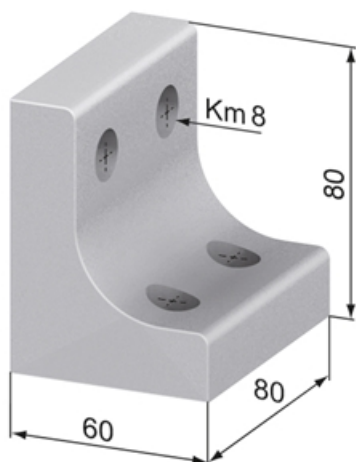
Application:

For right-angled fixing and stabilizing of profiles.

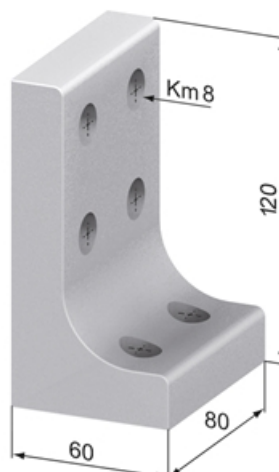
Material: Aluminium, natural anodized

System: 40 - Slot 8

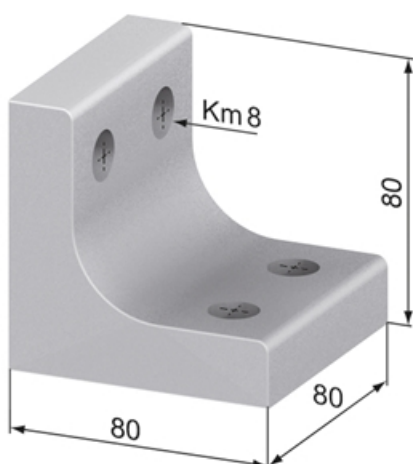
Type: Angles Brackets and Corners; Fasteners



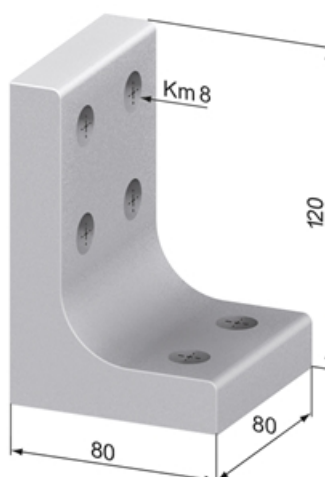
SZ0980N



SZ0990N

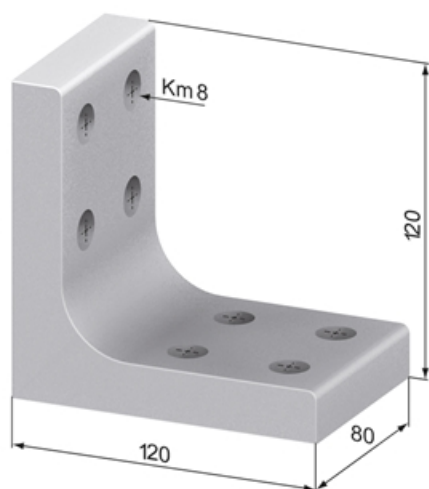


SZ0985N



SZ0995N

Fixing Angles



SZ0997N

General Data

Designation	Description	System	Weight (g)
SZ0980N	Fixing Angle 60 x 80	40 - Slot 8	523
SZ0990N	Fixing Angle 60 x 120	40 - Slot 8	683
SZ0985N	Fixing Angle 80 x 80	40 - Slot 8	610
SZ0995N	Fixing Angle 80 x 120	40 - Slot 8	742
SZ0997N	Fixing Angle 120 x 120	40 - Slot 8	875

Fixing Angles 40

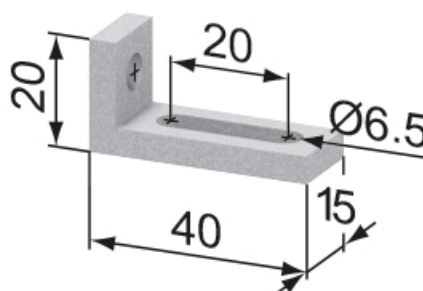
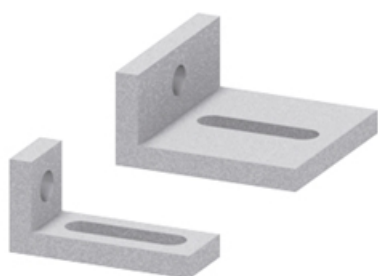
Application:

For right-angled fixing of profiles.

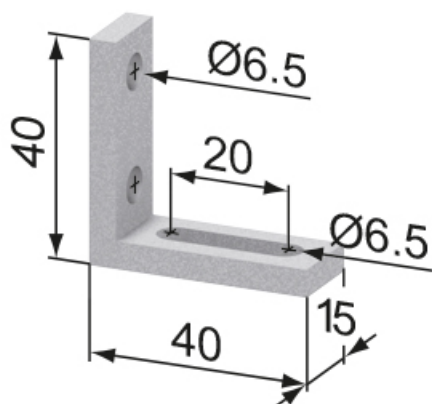
Material: Aluminium, natural anodized

System: 40 - Slot 8

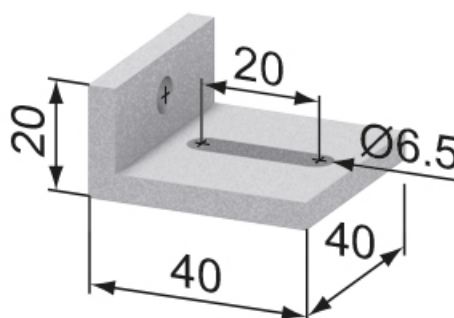
Type: Angles Brackets and Corners; Fasteners



SZ0910N

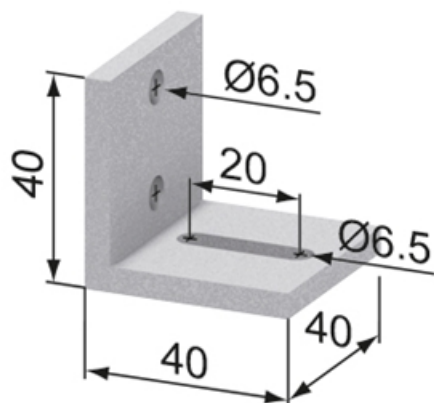


SZ0920N



SZ0916N

Fixing Angles 40



SZ0926N

General Data

Designation	Description	System	Weight (g)
SZ0910N	Fixing Angle 40 x 20 x 15	40 - Slot 8	9
SZ0912N	Fixing Angle 40 x 20 x 20	40 - Slot 8	13
SZ0914N	Fixing Angle 40 x 20 x 30	40 - Slot 8	20
SZ0916N	Fixing Angle 40 x 20 x 40	40 - Slot 8	27
SZ0920N	Fixing Angle 40 x 40 x 15	40 - Slot 8	12
SZ0922N	Fixing Angle 40 x 40 x 20	40 - Slot 8	17
SZ0924N	Fixing Angle 40 x 40 x 30	40 - Slot 8	27
SZ0926N	Fixing Angle 40 x 40 x 40	40 - Slot 8	37

Fixing Angles 70 x 70

Application:

For right-angled fixing of profiles without the need of machining the profiles. Comes with required fixing set.

Supply:

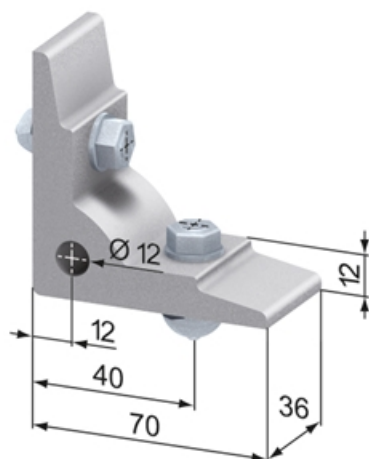
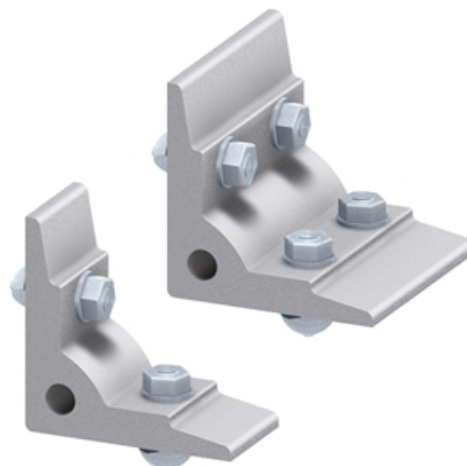
SZ0941N: 4x anchor screw (M8 x 32)

SZ0940N: 2x anchor screw (M8 x 32), 2x anti-twist set screw

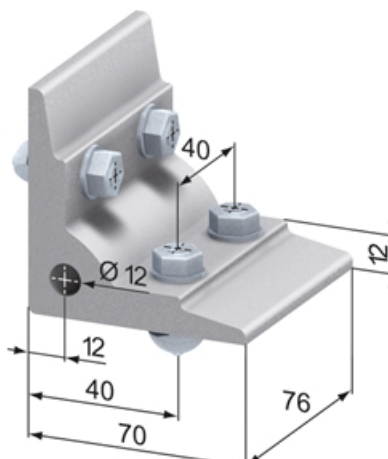
Material: Aluminium, natural anodized

System: 40 - Slot 8

Type: Angles Brackets and Corners; Fasteners



SZ0940N



SZ0941N

General Data

Designation	Description	System	Weight (g)
SZ0940N	Fixing Angle 70 x 70 x 36	40 - Slot 8	166
SZ0941N	Fixing Angle 70 x 70 x 76	40 - Slot 8	344

Angles 120 x 120

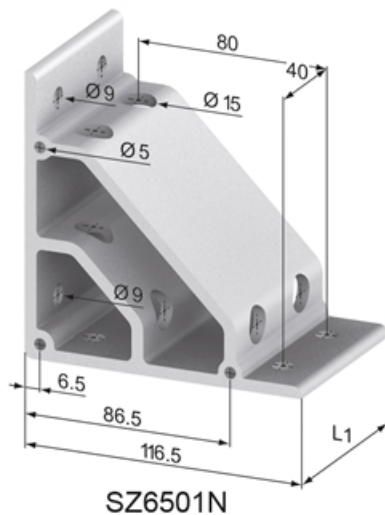
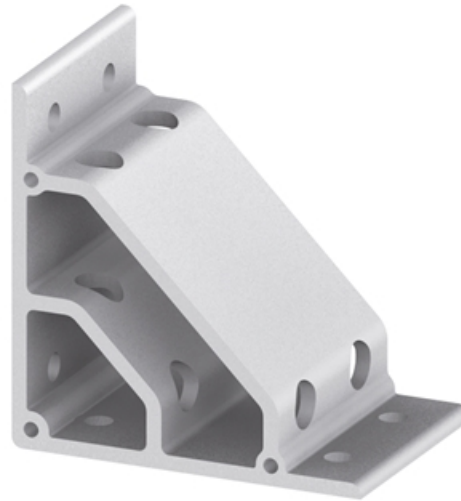
Application:

For right-angled fixing of profiles.

Material: Aluminium, natural anodized

System: 40 - Slot 8

Type: Angles Brackets and Corners; Fasteners



General Data

Designation	Description	System	Number of Fixing Holes	Weight (g)
SZ6500N	Angle 120 x 120 x 40	40 - Slot 8	4	210
SZ6501N	Angle 120 x 120 x 80	40 - Slot 8	8	424
SZ6502N	Angle 120 x 120 x 120	40 - Slot 8	12	636

Clamp Angles

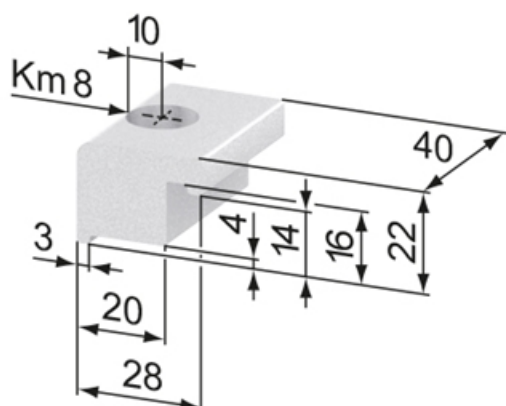
Application:

For right-angled fixing of profiles.

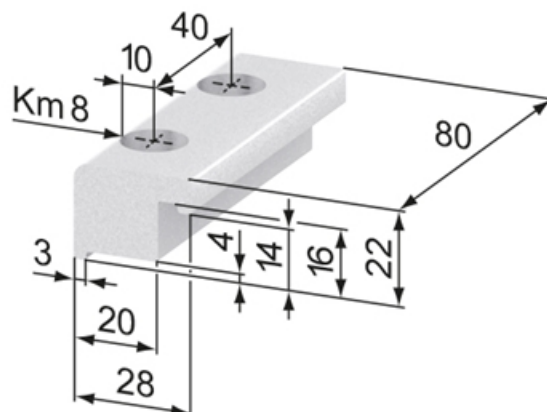
Material: Aluminium, natural anodized

System: 40 - Slot 8

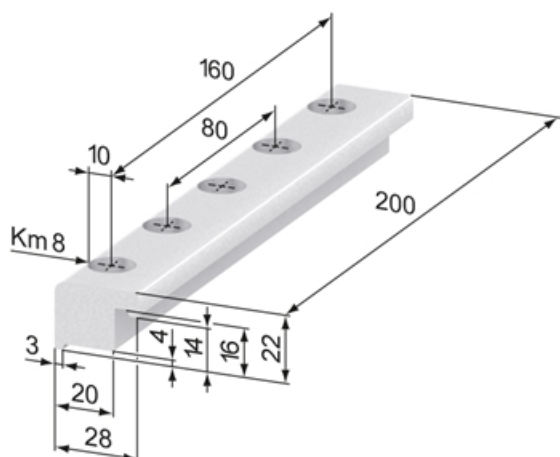
Type: Angles Brackets and Corners; Fasteners



SZ6550N



SZ6551N



SZ6554N

General Data

Designation	Description	System	Number of Fixing Holes	Weight (g)
SZ6550N	Clamp Angle 28 x 22 x 40	40 - Slot 8	1	41
SZ6551N	Clamp Angle 28 x 22 x 80	40 - Slot 8	2	83

Mounting Angle

Variable angles for mounting components.

Oblong holes provide a wide range of position and angle adjustment. Use up to M6 screws to attach them.

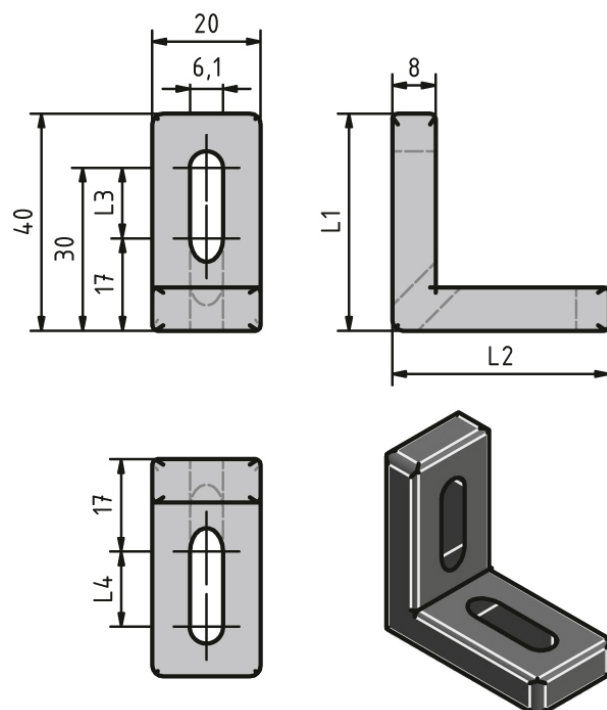
Material: Black die-cast zinc

System: 40 - Slot 8; 30 - Slot 6; 20 - Slot 5

Type: Angles Brackets and Corners; Fasteners



General Data



Designation	L1	L2	L3	L4
PZ1920	40	40	13	13
PZ1925	60	40	33	13
PZ1935	80	40	53	13

Corner Fasteners

Application:

For right-angled fixing of profiles.

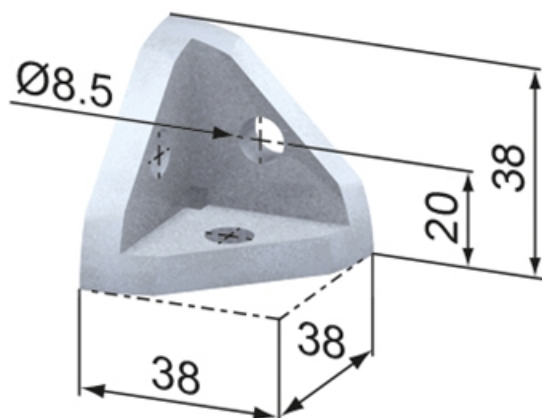
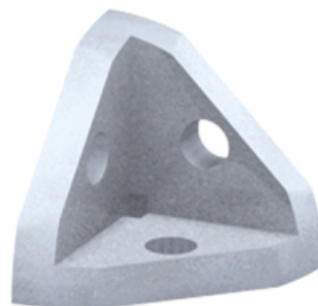
Supply:

Corner fastener sets contain the corner fastener 40 x 40 45°, three button head screws M 8 x 20, ISO 7380, and the appropriate cap.

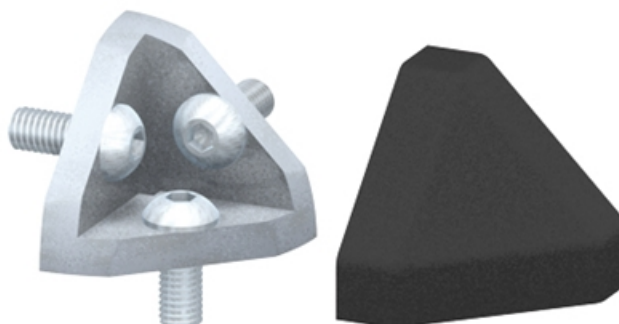
Material: GDZn (zinc diecasting), natural & PA 6, black

System: 40 - Slot 8

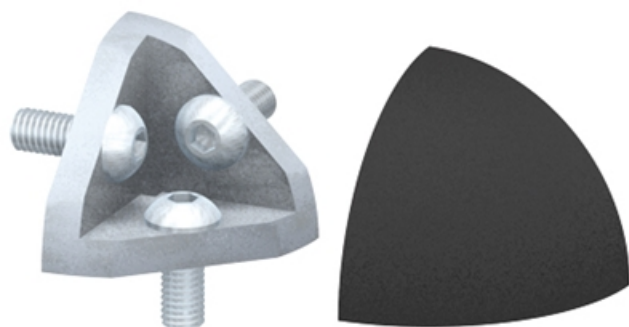
Type: Angles Brackets and Corners; Fasteners



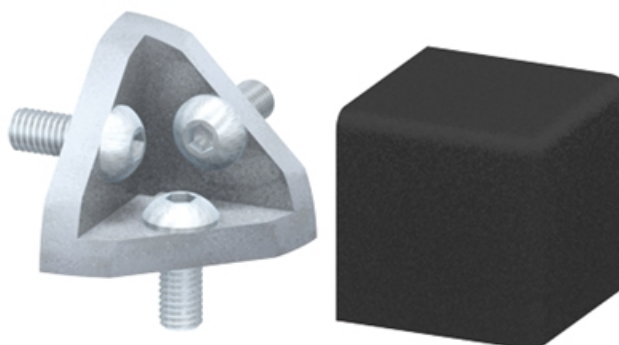
SZ0931S



SZ0930S



SZ0932S



SZ0933S

General Data

Designation	Description	System	Weight (g)
SZ0931S	Corner Fastener 40 x 40 45°	40 - Slot 8	89
SZ0930S	Corner Fastener Set 40 x 40 45°	40 - Slot 8	127
SZ0932S	Corner Fastener Set 40 x 40, round	40 - Slot 8	127
SZ0933S	Corner Fastener Set 40 x 40, edge	40 - Slot 8	135

Round Corners

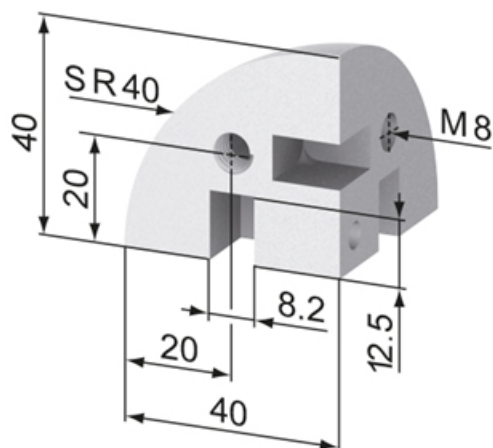
Application:

For right-angled fixing of round profiles.

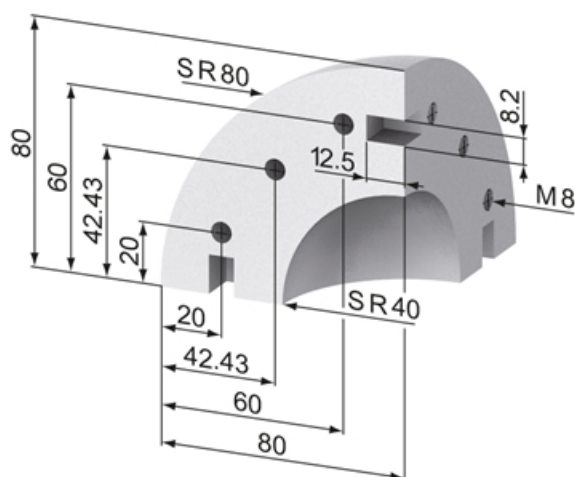
Material: Aluminium, natural anodized

System: 40 - Slot 8

Type: Angles Brackets and Corners; Fasteners



SZ5050N



SZ5045N



General Data

Designation	Description	System	Weight (g)
SZ5050N	Round Corner 40	40 - Slot 8	74
SZ5045N	Round Corner 80	40 - Slot 8	584

Gusset Plates AL

Application:

Gusset plates are suitable for strengthening t- and corner connections of profiles within machine frames and jigs.

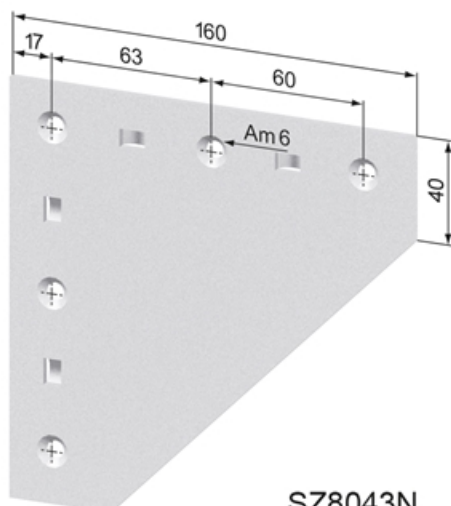
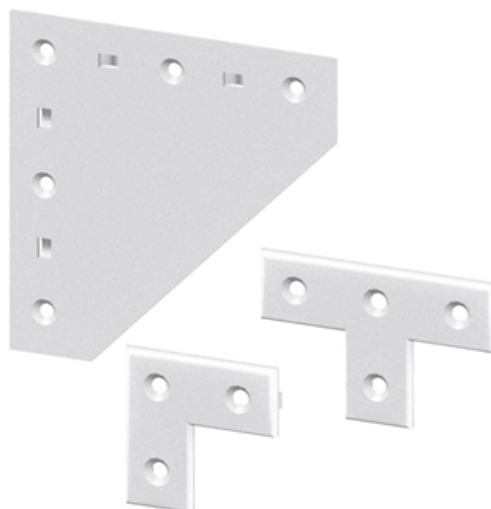
Supply:

Gusset plates and appropriate fixing sets are available separately as well as in complete sets.

Material: Aluminium, natural anodized

System: 40 - Slot 8

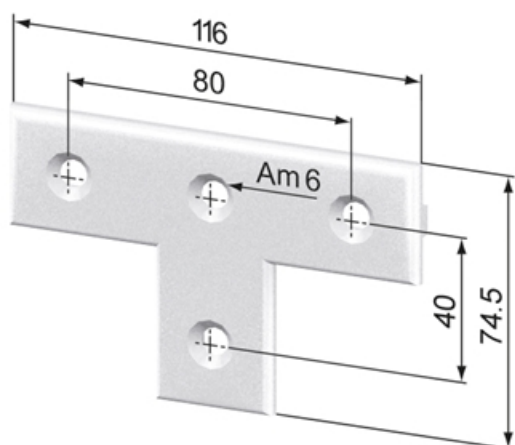
Type: Angles Brackets and Corners; Fasteners



SZ8043N



SZ0780V

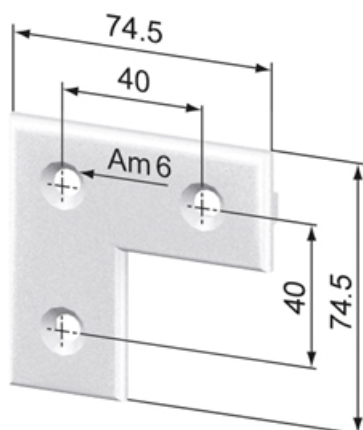


SZ8070N

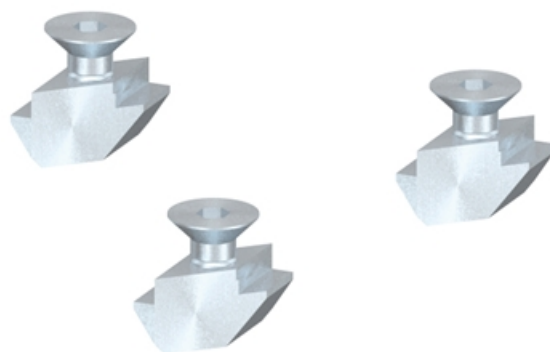


SZ0784V

Gusset Plates AL



SZ8060N



SZ0782V

General Data

Designation	Description	System	Weight (g)
SZ8043N	Gusset Plate Al, 160 x 160	40 - Slot 8	140
SZ0780V	Fixing Set For Gusset Plate Al, 160 x 160	40 - Slot 8	3
SZ8048N	Gusset Plate Al, 160 x 160, complete	40 - Slot 8	176
SZ8070N	Gusset Plate Al, t-version	40 - Slot 8	150
SZ0784V	Fixing Set For Gusset Plate Al, t-version	40 - Slot 8	40
SZ8060N	Gusset Plate Al, angle	40 - Slot 8	150
SZ0782V	Fixing Set For Gusset Plate Al, angle	40 - Slot 8	40
SZ8065N	Gusset Plate Al, angle, complete	40 - Slot 8	134

Attachment Plates

Application:

To attach profiles onto assemblies, work benches, etc. Can also be used to connect profiles one to another.

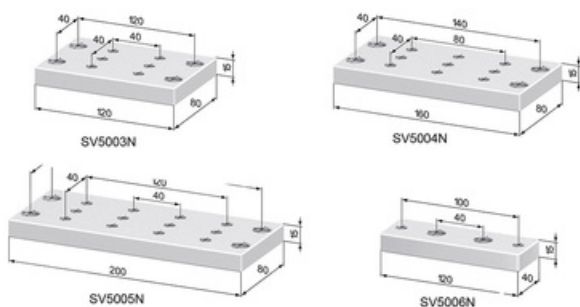
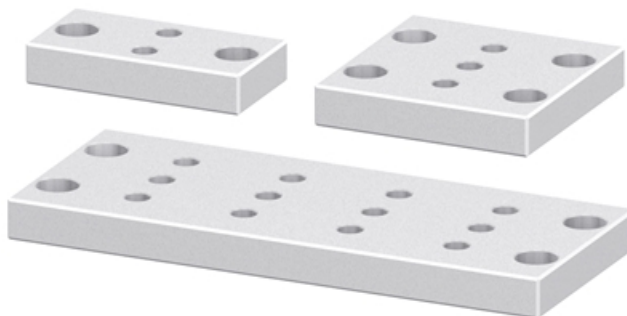
Supply:

1 x attachment plate

Material: Aluminium, natural anodized

System: 40 - Slot 8

Type: Attachment Plates



General Data

Designation	Description	System	Weight (g)
SV5003N	Attachment Plate 80 x 120	40 - Slot 8	390
SV5004N	Attachment Plate 80 x 160	40 - Slot 8	520
SV5005N	Attachment Plate 80 x 200	40 - Slot 8	650
SV5006N	Attachment Plate 40 x 120	40 - Slot 8	190

Attachment Plates, angled

Application:

For bracing two profiles by either attaching two 45° plates or one 30° plate and one 60° plate to the 80 x 80 profiles.

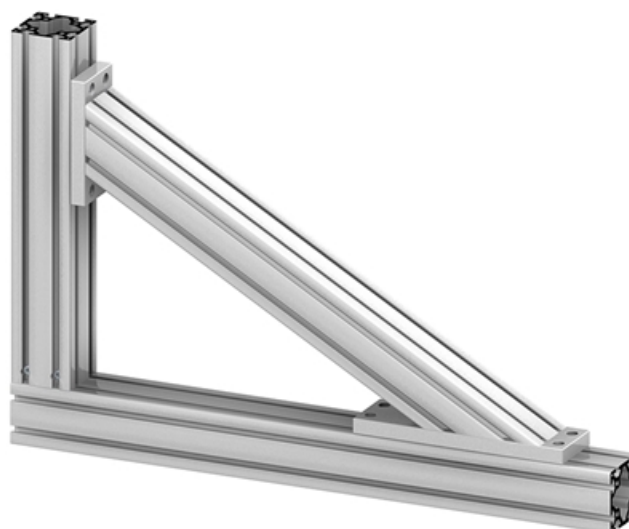
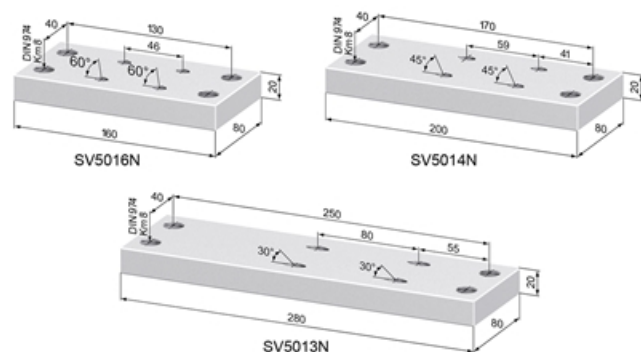
Supply:

1 x attachment plate

Material: Aluminium, natural anodized

System: 40 - Slot 8

Type: Attachment Plates



General Data

Designation	Description	System	Weight (g)
SV5016N	Attachment Plate 60°, 80 x 160	40 - Slot 8	635
SV5014N	Attachment Plate 45°, 80 x 200	40 - Slot 8	800
SV5013N	Attachment Plate 30°, 80 x 280	40 - Slot 8	1130

Central Fastener 40 EL / EQ

Application:

All-purpose universal fastener. The twist-in anchor, with an anti-twist feature, can be fixed in the profile groove at any point. The anchor is held in position by a spring-loaded ball in the opposing profile t-slot.

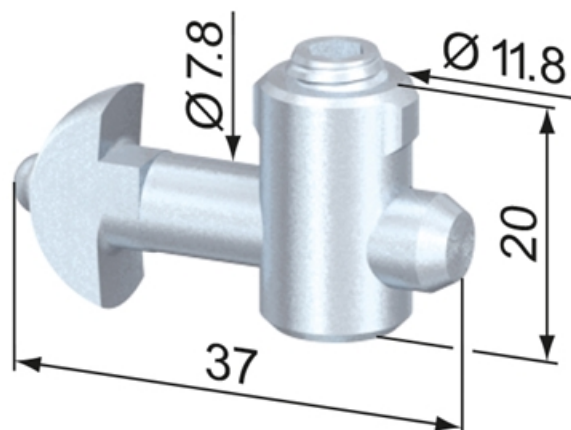
Assembly:

Bore hole for the barrel housing: $\varnothing 12$ mm, 15 mm from profile end, 30 mm deep.

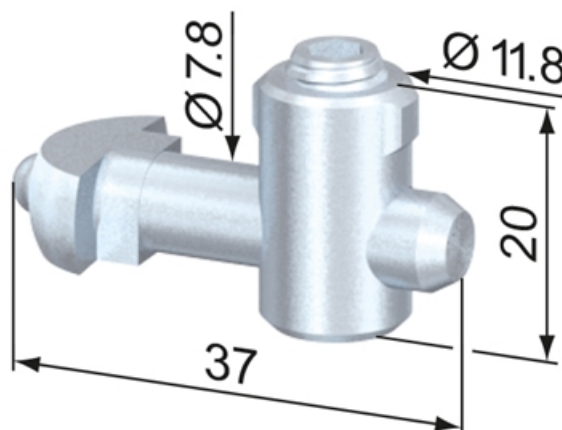
Bore for center hole on end of profile for anchor: $\varnothing 8.5$ mm, 25 mm deep.

System: 40 - Slot 8

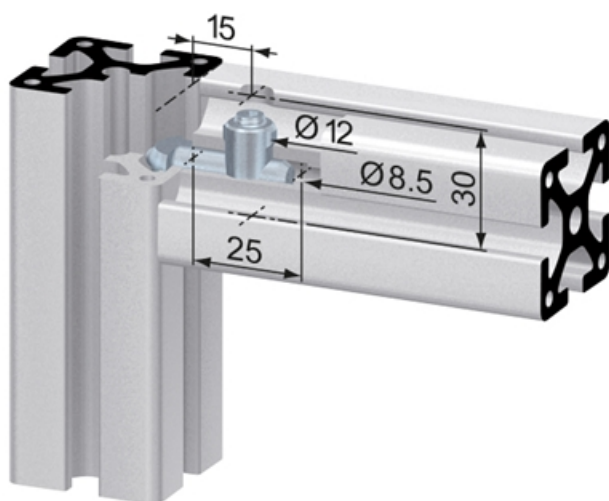
Type: Fasteners



SV1011V



SV1021V



General Data

Designation	Description	System	Material	Weight (g)
SV1011V	Central Fastener 40 EL	40 - Slot 8	Steel, zinc-plated	26
SV1021V	Central Fastener 40 EQ	40 - Slot 8	Steel, zinc-plated	26

Central Fastener G 30 SS / G 45 SS

Application:

The anchor is screwed into the t-nut at either 30° or 45°. Special angles are available on request.

Assembly:

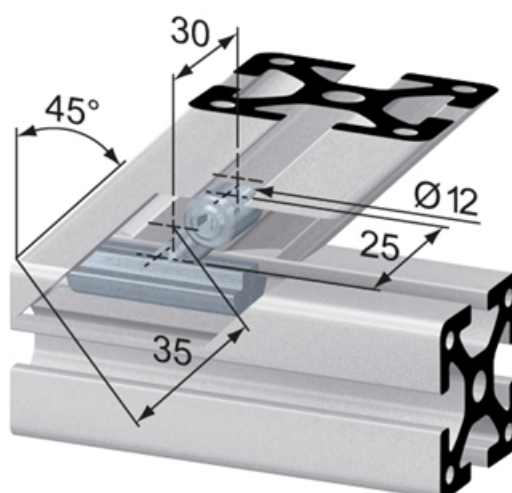
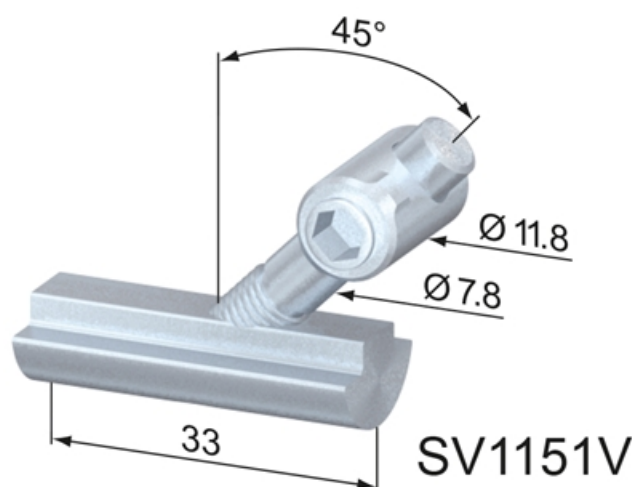
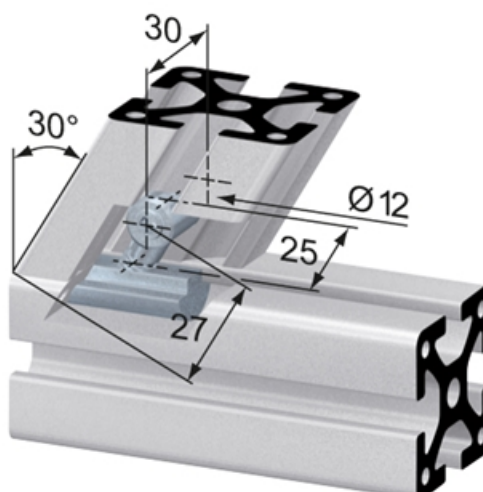
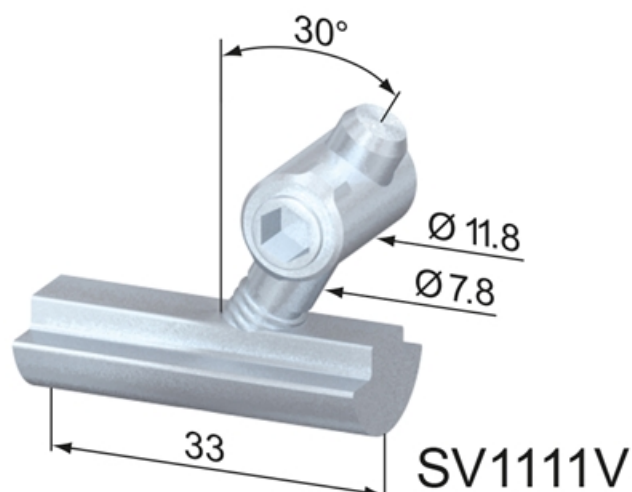
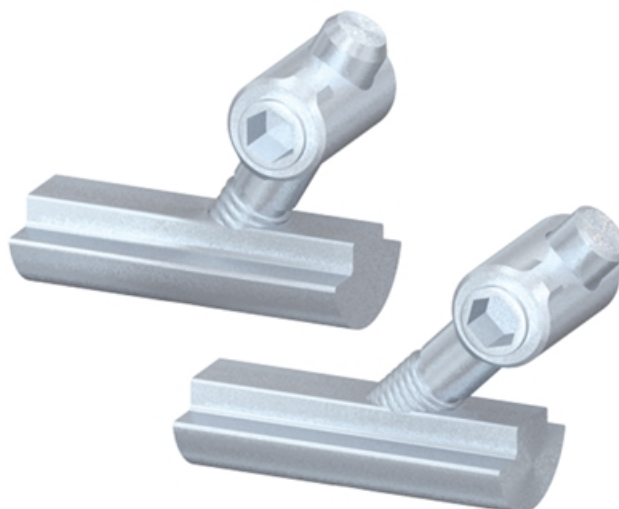
Bore hole for the barrel housing: Ø 12 mm, 27 mm (35 mm) from profile end, 30 mm deep.

Bore for center hole on end of profile for anchor: Ø 8.5 mm, 25 mm deep.

Material: Steel, zinc-plated

System: 40 - Slot 8

Type: Fasteners



General Data

Designation	Description	System	Weight (g)
SV1111V	Central Fastener G 30 SS	40 - Slot 8	56
SV1151V	Central Fastener G 45 SS	40 - Slot 8	57

Central Fastener 40 90°

Application:

Fastener for 90° mitered joint, cut angle is 45°

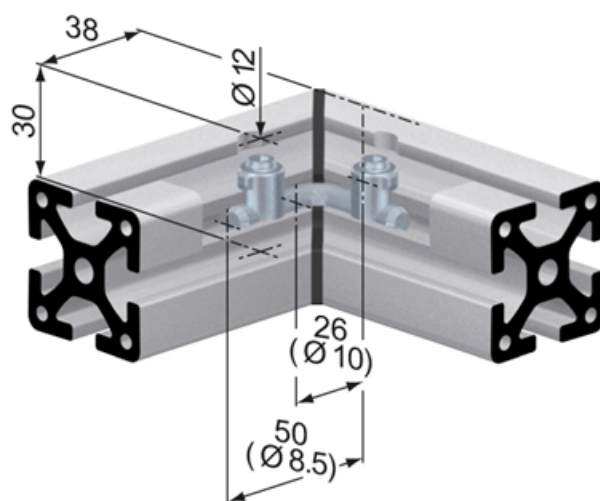
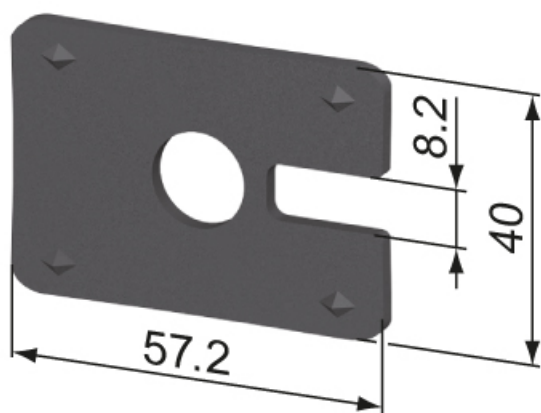
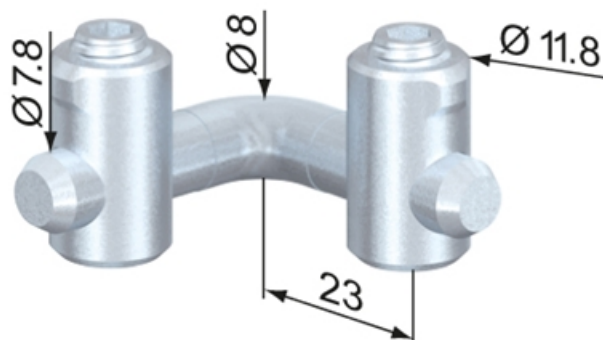
Assembly:

Bore hole for the barrel housing (2x): Ø 12 mm, 38 mm from profile end, 30 mm deep.

Bore for center hole on end of profile for anchor (2x): Ø 8.5 mm, 50 mm deep; Ø 10 mm, 26 mm deep.

System: 40 - Slot 8

Type: Fasteners



General Data

Designation	Description	System	Material	Weight (g)
SV1650V	Central Fastener 40 90°	40 - Slot 8	Steel, zinc-plated	42
SV1660V	Plastic Corner 40 90°	40 - Slot 8	POM, black	8

Central Fastener 40 120°

Application:

Fastener for 60° mitered joint, cut angle is 60°

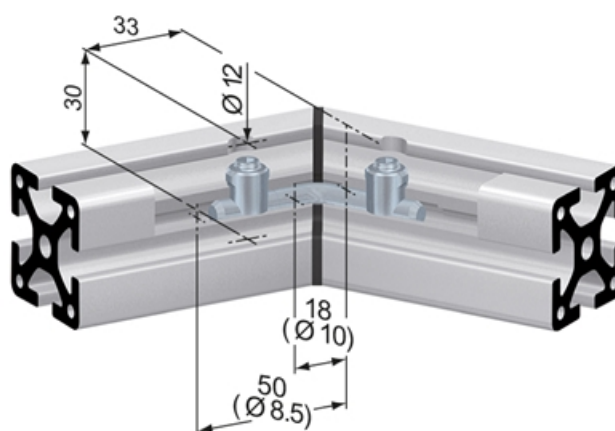
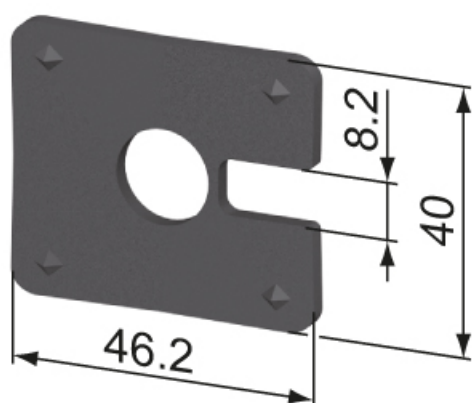
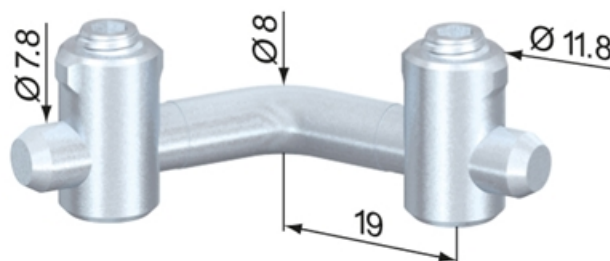
Assembly:

Bore hole for the barrel housing (2x): Ø 12 mm, 33 mm from profile end, 30 mm deep.

Bore for center hole on end of profile for anchor (2x): Ø 8.5 mm, 50 mm deep; Ø 10 mm, 26 mm deep.

System: 40 - Slot 8

Type: Fasteners



General Data

Designation	Description	System	Material	Weight (g)
SV1640V	Central Fastener 40 120°	40 - Slot 8	Steel, zinc-plated	40

Central Fastener 40 135°

Application:

Fastener for 45° mitered joint, cut angle is 67,5°.

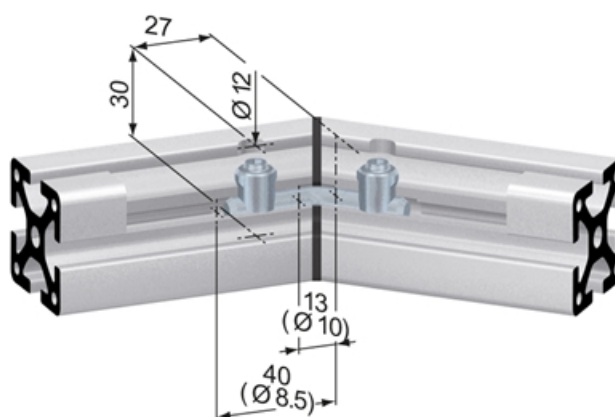
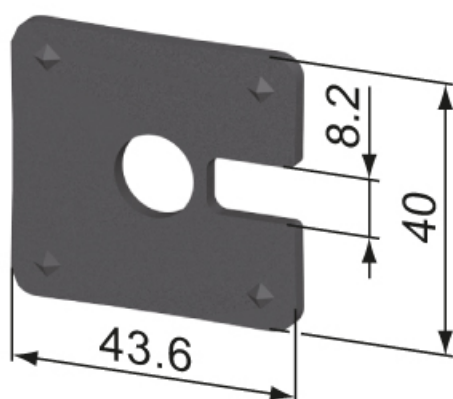
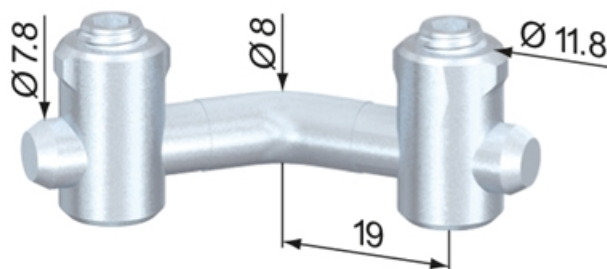
Assembly:

Bore hole for the barrel housing (2x): Ø 12 mm, 27 mm from profile end, 30 mm deep

Bore for center hole on end of profile for anchor (2x): Ø 8.5 mm, 40 mm deep; Ø 10 mm, 26 mm deep

System: 40 - Slot 8

Type: Fasteners



General Data

Designation	Description	System	Material	Weight (g)
SV1645V	Central Fastener 40 135°	40 - Slot 8	Steel, zinc-plated	42
SV1665V	Plastic Corner 40 135°	40 - Slot 8	POM, black	6

Central Fastener 40 G

Application:

Butt fastener. Used for joining two profiles end to end or for frontal attaching of plates. The anchor is screwed into the opposing profile or plate.

Assembly:

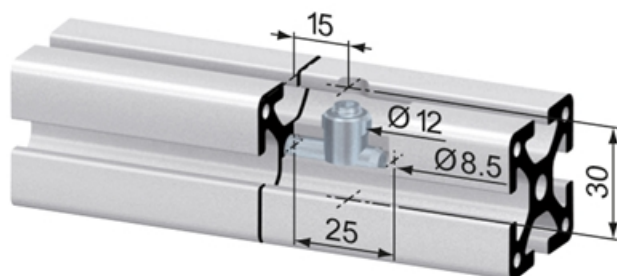
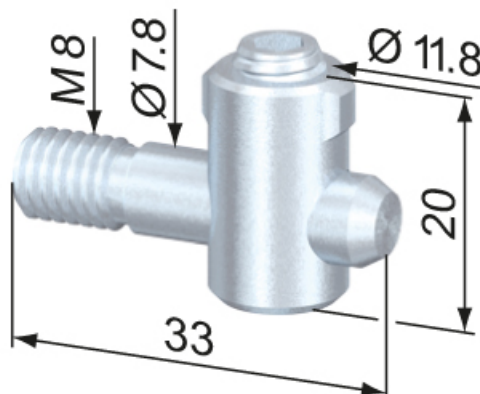
Bore hole for the barrel housing: $\varnothing 12$ mm, 15 mm from profile end, 30 mm deep.

Bore for center hole on end of profile for anchor: $\varnothing 8.5$ mm, 25 mm deep.

Material: Steel, zinc-plated

System: 40 - Slot 8

Type: Fasteners



General Data

Designation	System	Weight (g)
SV1071V	40 - Slot 8	22

Central Fastener 40 GC / GCV

Application:

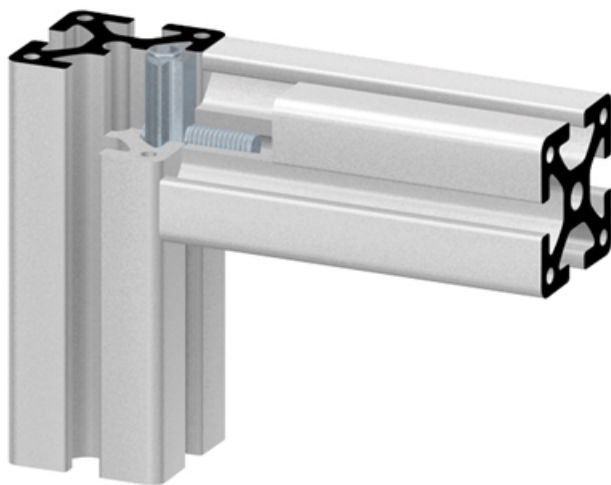
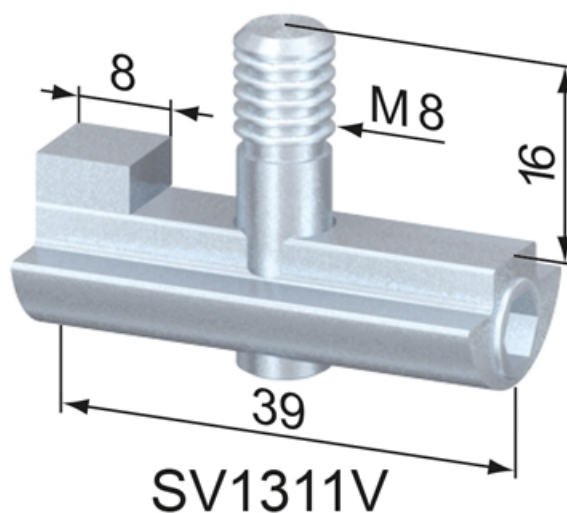
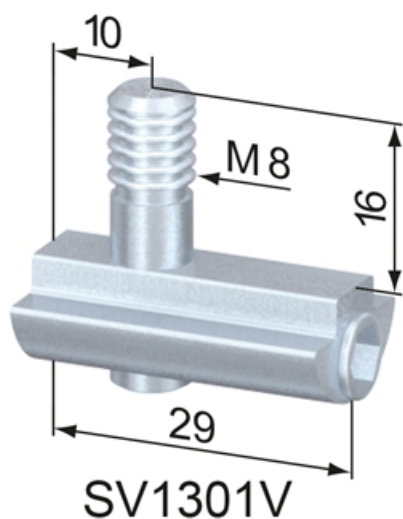
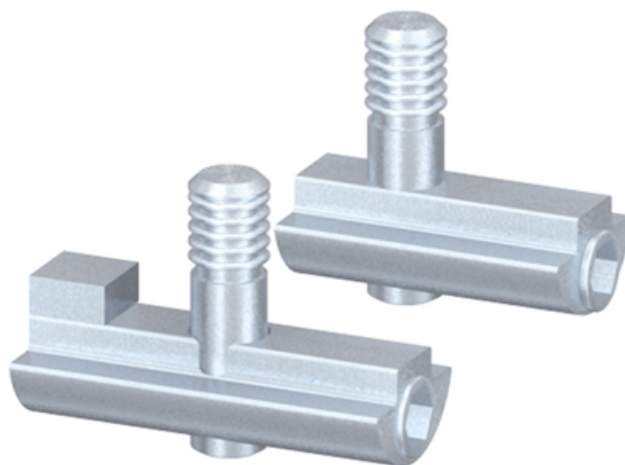
All-purpose universal fastener. Uses a slide-in t-nut with locking grub screw. The anchor with M8 thread is screwed into the opposing profile. The Central Fastener 40 GCV includes an anti-twist feature.

Assembly:

Slide t-nut portion into the t-slot from the end of the profile. Tap center hole of mating profile with an M8 thread and screw in threaded anchor. Twist to orient indented portion of fastener so that it is facing the same direction as the barrel housing.

System: 40 - Slot 8

Type: Fasteners



General Data

Designation	Description	System	Weight (g)
SV1301V	Central Fastener 40 GC	40 - Slot 8	30.7
SV1311V	Central Fastener 40 GCV	40 - Slot 8	40.8

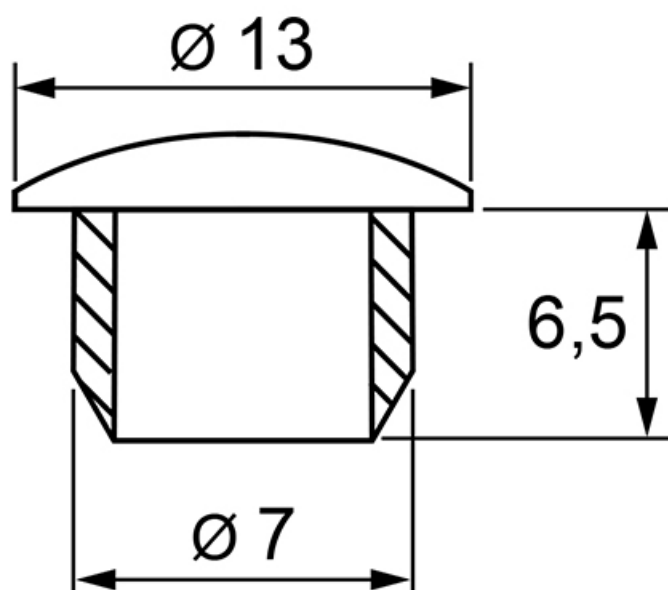
Dummy Plug

Application:

Use the dummy plugs to close the drill hole in closed slots.

Material: PVC**System:** 40 - Slot 8**Type:** Fasteners

General Data



Designation	Description	System
PA1110	Cap 8 D7, black	40 - Slot 8
PA1115	Cap 8 D7, grey	40 - Slot 8

Pneumatic Fastener 40

Application:

For extending profile runs used as compressed air lines.
Can also be used to extend standard profile runs.

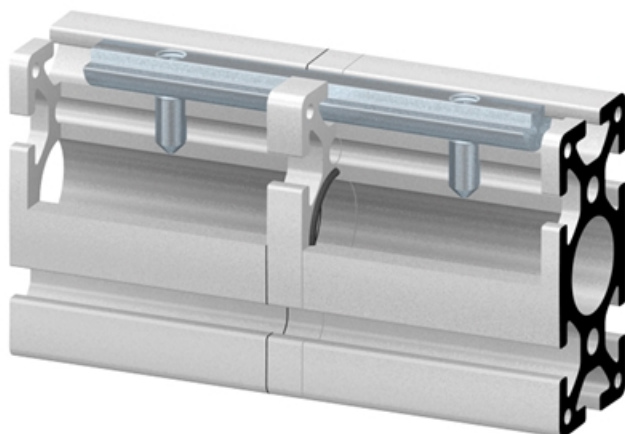
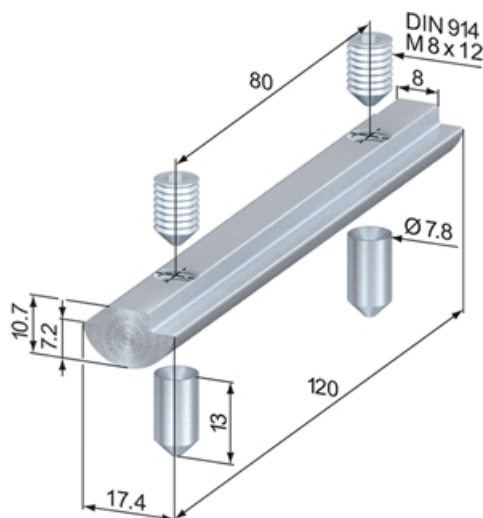
Supply:

1 x t-nut M8, slide-in, L = 120 mm
2 x tensioning bush
2 x grub screw M8 x 12, zinc-plated

Material: Steel, zinc-plated

System: 40 - Slot 8

Type: Fasteners



General Data

Designation	System	Weight (g)
SV3500V	40 - Slot 8	114

Attachment Screws

Application:

Attaching accessories and sheet material to profiles. The twist-in attachment screw, with an anti-twist feature, can be fixed in the profile groove at any point and is held in position by a spring-loaded ball.

Supply:

1 x hexagon nut M6 (M8), DIN 934, Zn

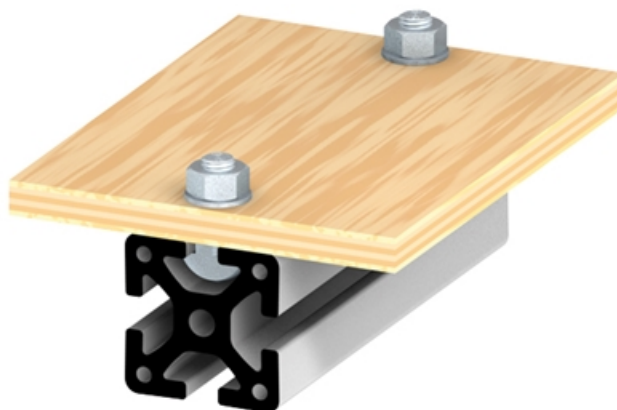
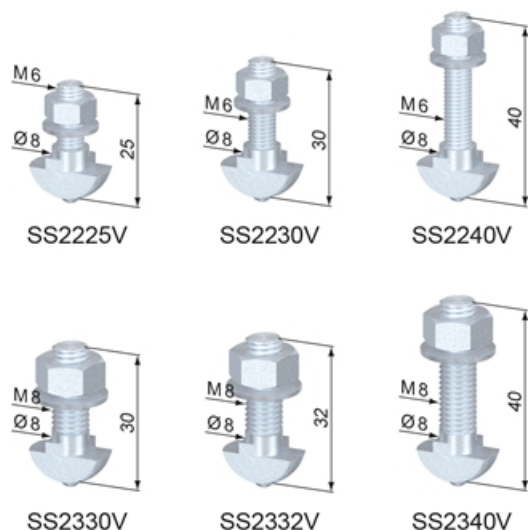
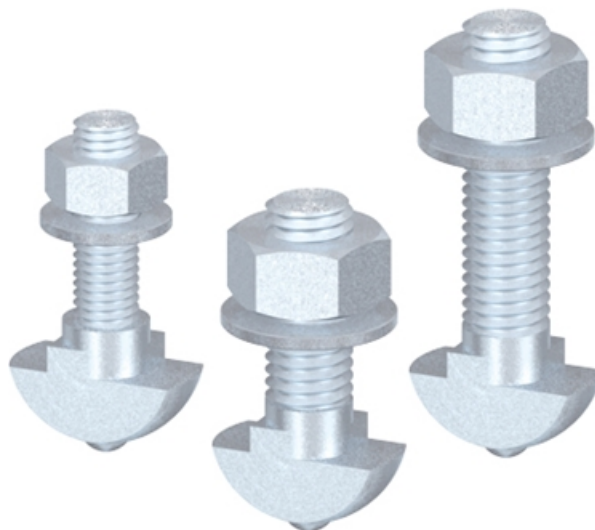
1 x washer M6 (M8), DIN 125

1 x attachment screw M6 (M8) x L

Material: Steel, zinc-plated

System: 40 - Slot 8

Type: Fasteners



General Data

Designation	Description	System	Weight (g)
SS2225V	Attachment Screw M6 / L 25	40 - Slot 8	12
SS2230V	Attachment Screw M6 / L 30	40 - Slot 8	12
SS2240V	Attachment Screw M6 / L 40	40 - Slot 8	15
SS2330V	Attachment Screw M8 / L 30	40 - Slot 8	20
SS2332V	Attachment Screw M8 / L 32	40 - Slot 8	20
SS2340V	Attachment Screw M8 / L 40	40 - Slot 8	22

Potential Equalizers

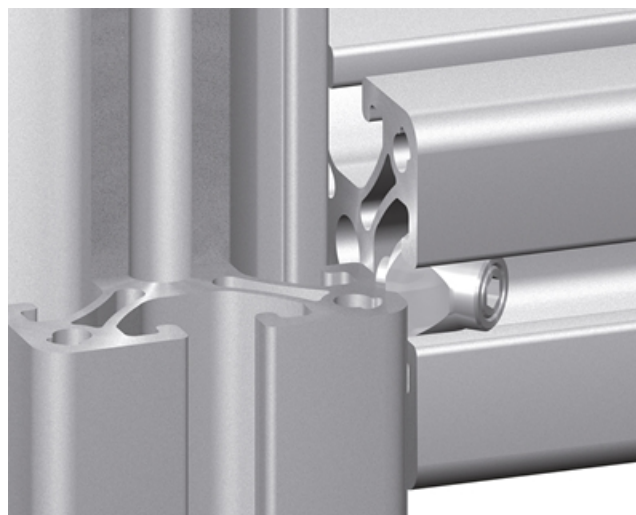
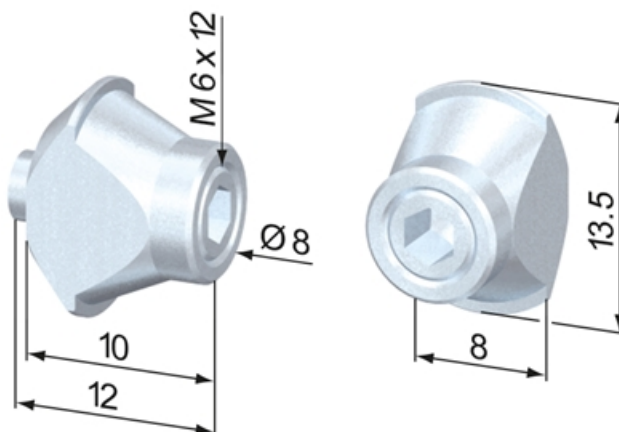
Application:

For the bonding of machine frames. Establishes an electrical conductivity connection between two profiles. The potential equalizer must not be used to carry current or become description of a protective circuit.

Material: Steel, zinc-plated

System: 40 - Slot 8

Type: Fasteners



General Data

Designation	System	Weight (g)
SZ7000N	40 - Slot 8	4.7

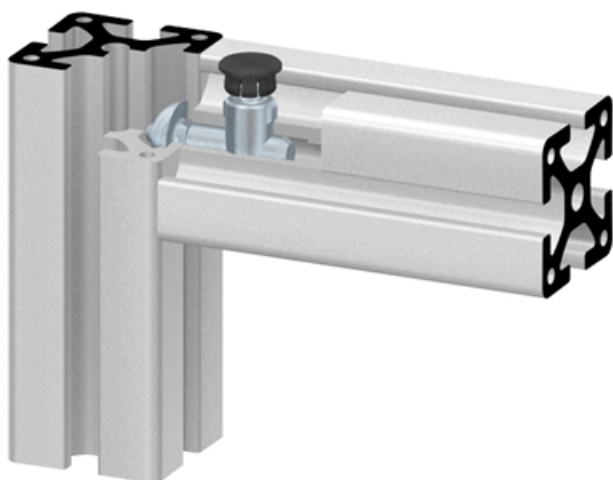
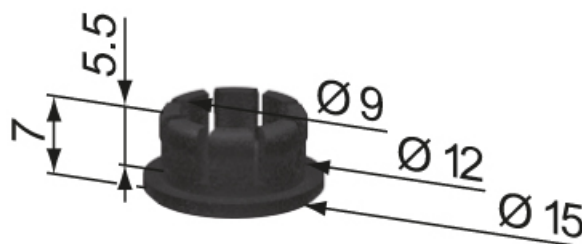
Profile Cap for SV drillings

Application:

For covering profile drillings that occur by assembling SV fasteners.

System: 40 - Slot 8

Type: Fasteners; Caps



General Data

Designation	Description	System
SZ0099S	Profile Cap for SV drillings	40 - Slot 8

T-Nuts, push-in

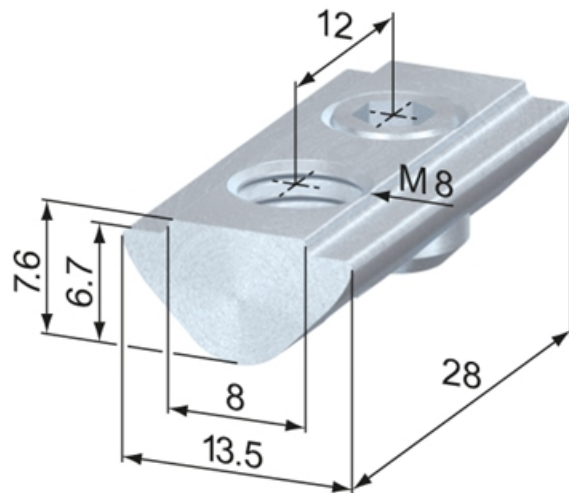
Application:

T-nut for swiveling into the t-slot. Fits into the t-slot at any point. Held in position by a grub screw. Raised area fits into the t-slot to stop twisting.

Material: Steel, zinc-plated

System: 40 - Slot 8

Type: T-nuts



T-Nuts, slide-in



T-Nuts, push-in



T-Slot Strength

Information in regards to the maximum allowable t-slot load capability F. These values already include a safety factor ($S > 2$) against plastic deformation.

Profile type	Max. pull charge F
standard	5000 N
double br.	3250 N
semi	2500 N
light	2000 N
superlight	1750 N



General Data

Designation	System	Thread	Weight (g)
SV2150V	40 - Slot 8	M5	14
SV2151V	40 - Slot 8	M6	14
SV2152V	40 - Slot 8	M8	12

T-Nuts, slide-in

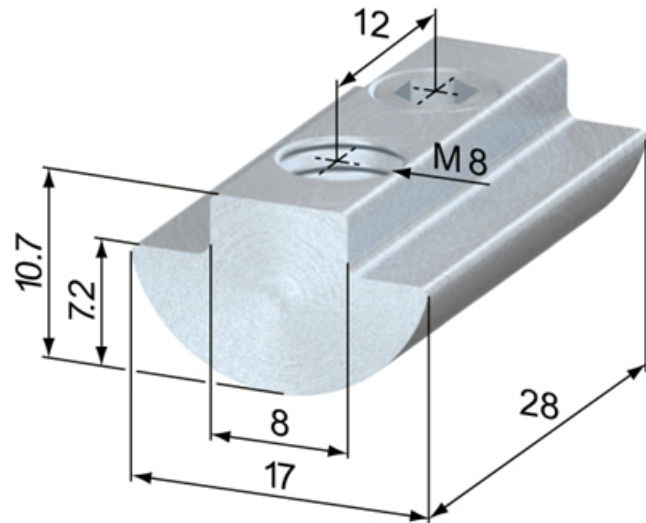
Application:

Slides in the t-slot from the end of the profile and is locked into position by a grub screw. The wide supporting surface of the t-nut makes it suitable for higher fastening forces.

Material: Steel, zinc-plated

System: 40 - Slot 8

Type: T-nuts



T-Nuts, slide-in



T-Nuts, push-in



T-Slot Strength

Information in regards to the maximum allowable t-slot load capability F. These values already include a safety factor ($S > 2$) against plastic deformation.

Profile type	Max. pull charge F
standard	5000 N
double br.	3250 N
semi	2500 N
light	2000 N
superlight	1750 N



General Data

Designation	System	Thread	Weight (g)
SV2050V	40 - Slot 8	M5	26
SV2052V	40 - Slot 8	M8	21

T-Nuts, steel / plastic

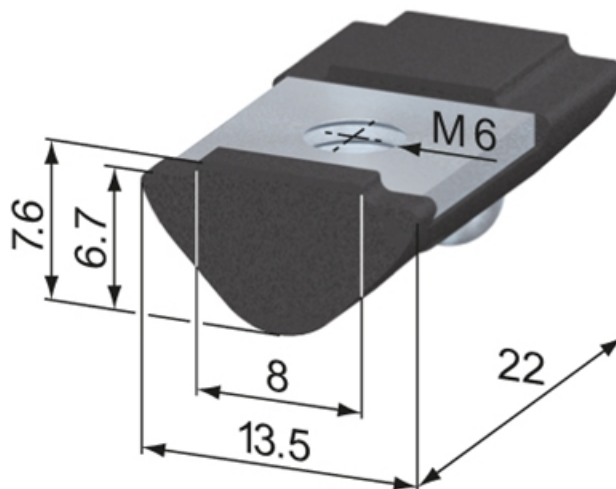
Application:

T-nut for swiveling into the t-slot. Fits into the t-slot at any point. Held in position by a spring-loaded ball. Raised area fits into groove to stop twisting.

Material: Plastic t-nut with steel insert

System: 40 - Slot 8

Type: T-nuts



T-Nuts, slide-in



T-Nuts, push-in



T-Slot Strength

Information in regards to the maximum allowable t-slot load capability F. These values already include a safety factor ($S > 2$) against plastic deformation.

Profile type	Max. pull charge F
standard	5000 N
double br.	3250 N
semi	2500 N
light	2000 N
superlight	1750 N



General Data

Designation	System	Thread	Weight (g)
SV2147S	40 - Slot 8	M5	4

T-Nut Profile, slide-in

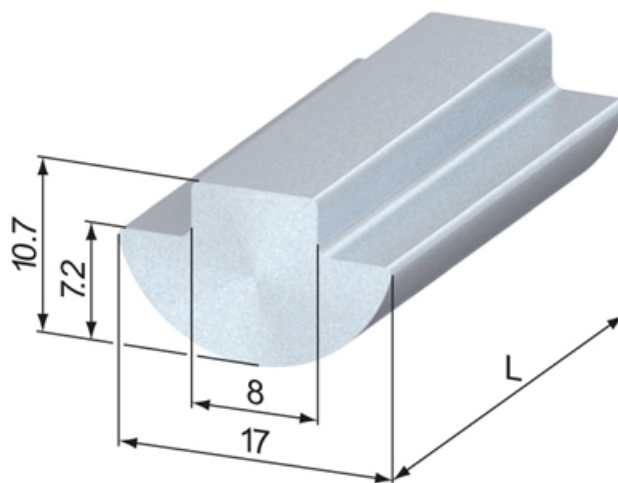
Application:

For manufacturing t-nuts, maximum tapping size M8.

Material: Steel, blank

System: 40 - Slot 8

Type: T-nuts



T-Nuts, slide-in



T-Nuts, push-in



T-Slot Strength

Information in regards to the maximum allowable t-slot load capability F. These values already include a safety factor ($S > 2$) against plastic deformation.

Profile type	Max. pull charge F
standard	5000 N
double br.	3250 N
semi	2500 N
light	2000 N
superlight	1750 N



General Data

Designation	System	Weight (g)
SV2570V	40 - Slot 8	2880

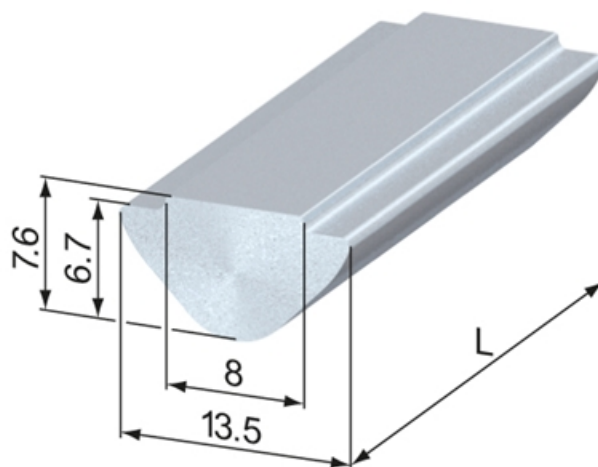
T-Nut Profile, push-in

Application:

For manufacturing t-nuts, maximum tapping size M8.

System: 40 - Slot 8

Type: T-nuts



T-Nuts, slide-in



T-Nuts, push-in



T-Slot Strength

Information in regards to the maximum allowable t-slot load capability F. These values already include a safety factor ($S > 2$) against plastic deformation.

Profile type	Max. pull charge F
standard	5000 N
double br.	3250 N
semi	2500 N
light	2000 N
superlight	1750 N



General Data

Designation	System	Material	Weight (g)	Length
SV2560V	40 - Slot 8	Steel, zinc-plated	1605	3000
SV2575V	40 - Slot 8	Stainless steel	1605	3000

T-Nut Profile, aluminium, slide-in

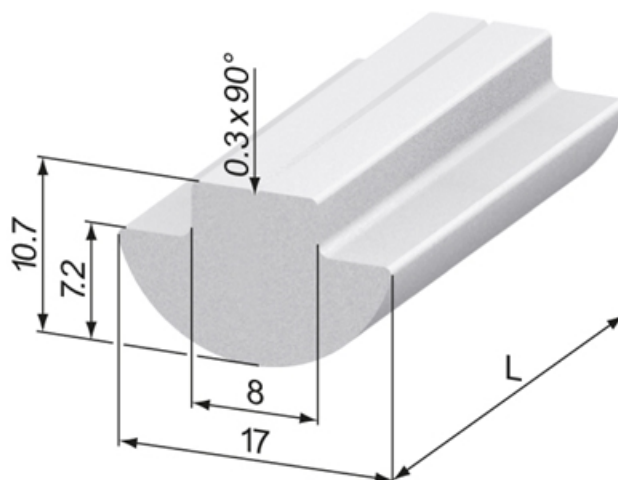
Application:

For manufacturing t-nuts, maximum tapping size M8.

Material: Aluminium, natural anodized

System: 40 - Slot 8

Type: T-nuts



T-Nuts, slide-in



T-Nuts, push-in



T-Slot Strength

Information in regards to the maximum allowable t-slot load capability F. These values already include a safety factor ($S > 2$) against plastic deformation.

Profile type	Max. pull charge F
standard	5000 N
double br.	3250 N
semi	2500 N
light	2000 N
superlight	1750 N



General Data

Designation	System	Weight (g/m)
SV2570N	40 - Slot 8	332

Double T-Nuts 40/20

Application:

T-nut for swiveling into the groove. Fits into the t-slot at any point. For fixing of foot plates and any other accessories that require a fixing pitch of 40 mm x M8 (20 mm x M6 respectively) thread. Raised area fits into t-slot to stop twisting.

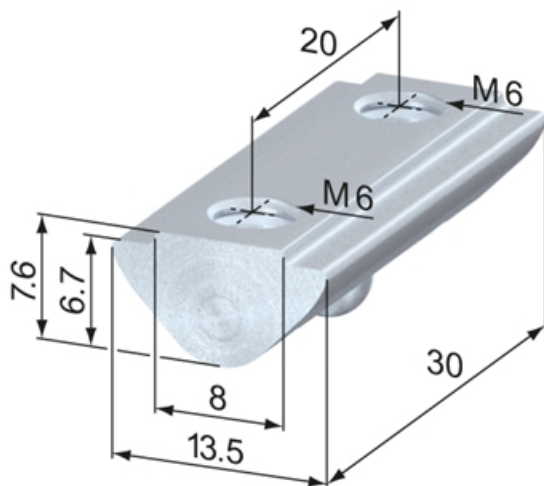
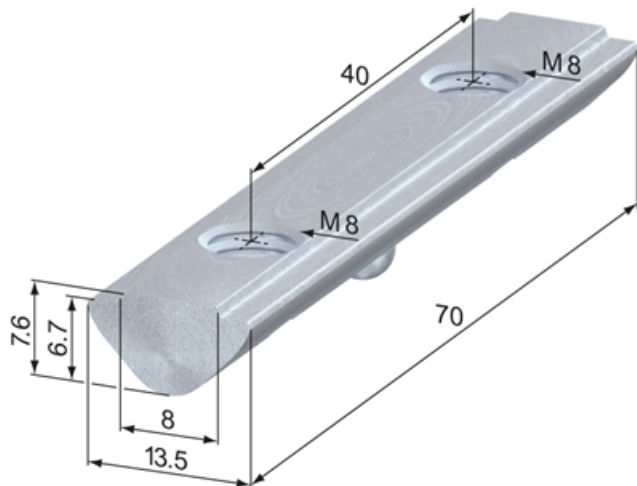
SV2202V: bore hole distance: 40 mm, thread: M8

SV2210V: bore hole distance: 20 mm, thread: M6

Material: Steel, zinc-plated

System: 40 - Slot 8

Type: T-nuts



T-Nuts, slide-in



T-Nuts, push-in



T-Slot Strength

Information in regards to the maximum allowable t-slot load capability F. These values already include a safety factor ($S > 2$) against plastic deformation.

Profile type	Max. pull charge F
standard	5000 N
double br.	3250 N
semi	2500 N
light	2000 N
superlight	1750 N



General Data

Designation	System	Thread
SV2202V	40 - Slot 8	40 M8
SV2210V	40 - Slot 8	20 M6

Special T-Nut

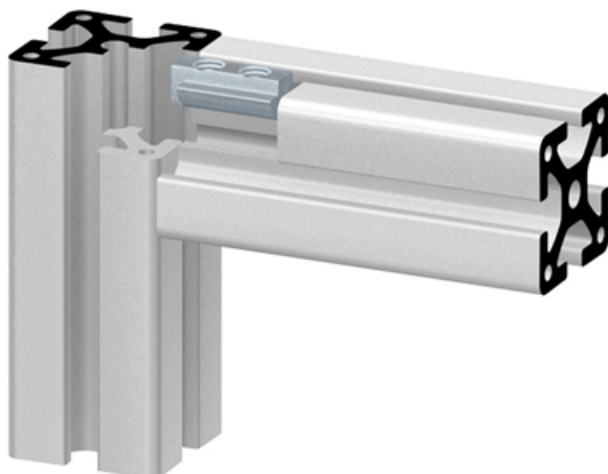
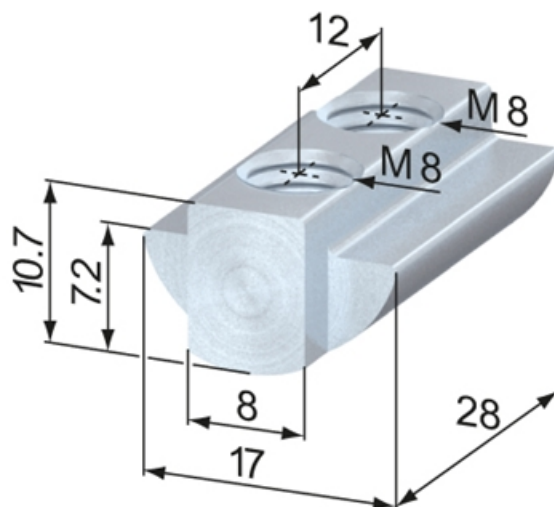
Application:

Provides anti-twist security used for heavy loads.

Material: Steel, zinc-plated

System: 40 - Slot 8

Type: T-nuts



T-Nuts, slide-in



T-Nuts, push-in



T-Slot Strength

Information in regards to the maximum allowable t-slot load capability F. These values already include a safety factor ($S > 2$) against plastic deformation.

Profile type	Max. pull charge F
standard	5000 N
double br.	3250 N
semi	2500 N
light	2000 N
superlight	1750 N



General Data

Designation	System	Weight (g)
SV2060V	40 - Slot 8	21

Panel Bracket

Fastens the surface element on the profile without further changes.

Tightening the clamping screw fastens the collet to both the surface element and the profile.

Do not use for grids or wave grids.

For 2-9 mm surface elements.

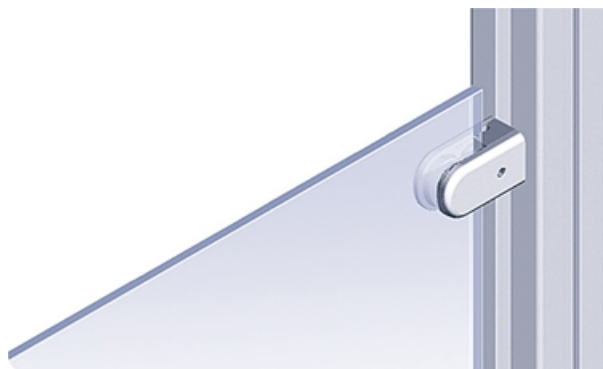
Material: Die-cast zinc, aluminium coloured powder coat

Set: 1 panel bracket, M5 × 16 screw,

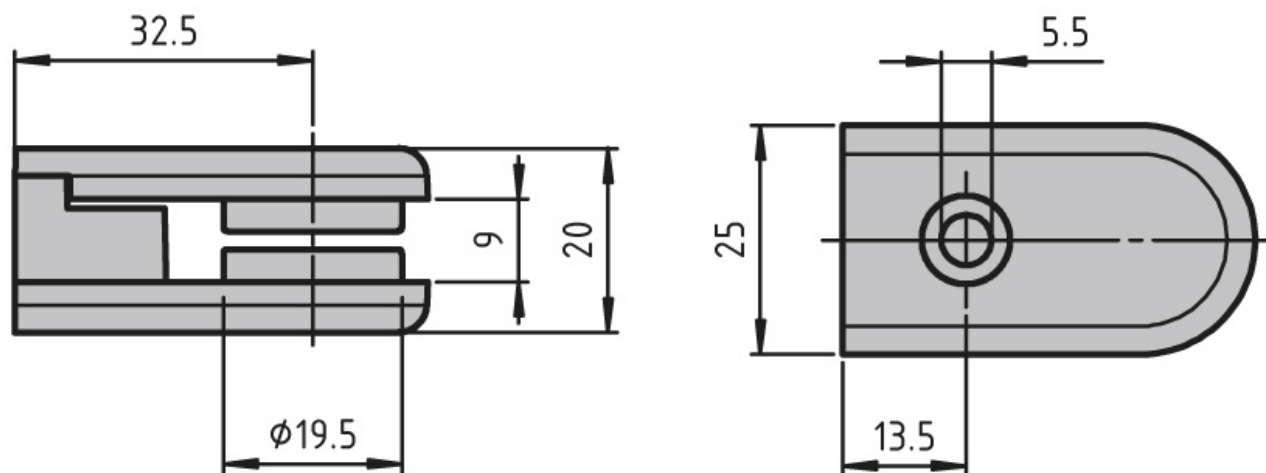
5 rubber pads for 2–9 mm plates

System: 40 - Slot 8; 30 - Slot 6; 20 - Slot 5

Type: Fixing Blocks/Fastening Elements



General Data



Designation	Description
PZ5069	Panel bracket

Earthing Strap

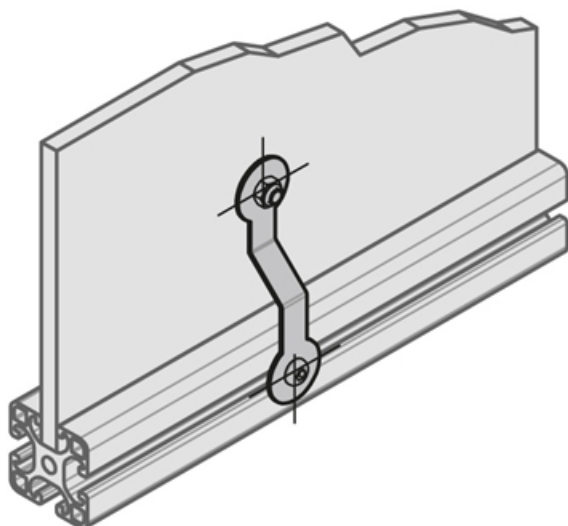
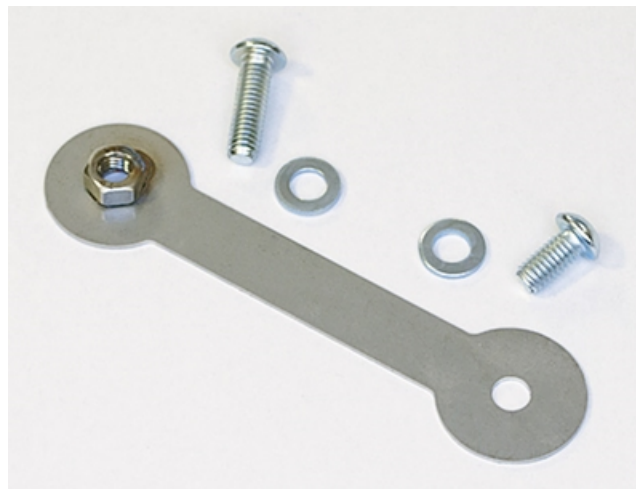
Creates a conductive link between surface elements and brace profiles.

Material: Stainless strip steel

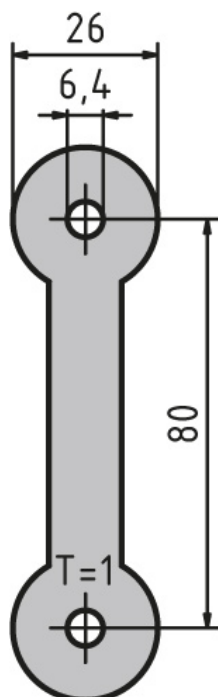
Package includes: 1× M6 × 20 fillister head screw (DIN7380), galvanised, 1× M6 × 12 fillister head screw (DIN7380), galvanised

System: 40 - Slot 8; 30 - Slot 6; 20 - Slot 5

Type: Fixing Blocks/Fastening Elements



General Data



Designation	Description
PZ5070	Earthing strap with welded-on nut

Angle 40 x 60

Application:

For attaching and adjusting protection panels. Gap adjustment: 16 - 24 mm

Supply:

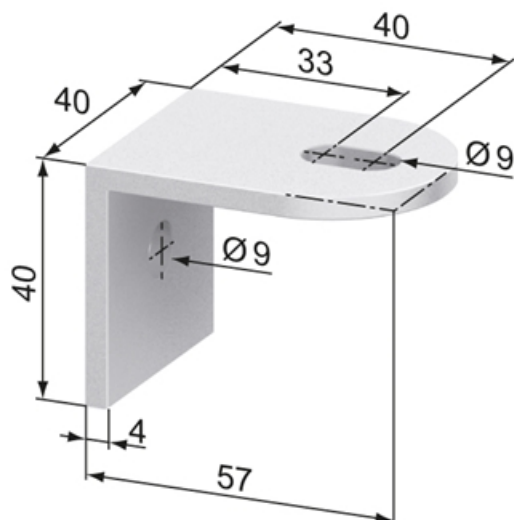
1 x attachment screw M8 / L24

1 x screw M8 x 20, DIN 7380, washer

Material: Aluminium, natural anodized

System: 40 - Slot 8

Type: Protection Wall Fastening Elements



General Data

Designation	System	Weight (g)
SZ8000N	40 - Slot 8	31.5

Angle 60 x 70

Application:

Panel support angle with bolt for angular adjustment of panels.

Supply:

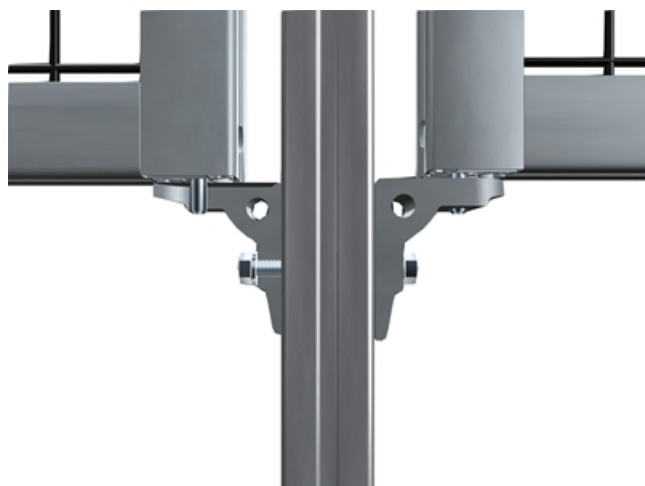
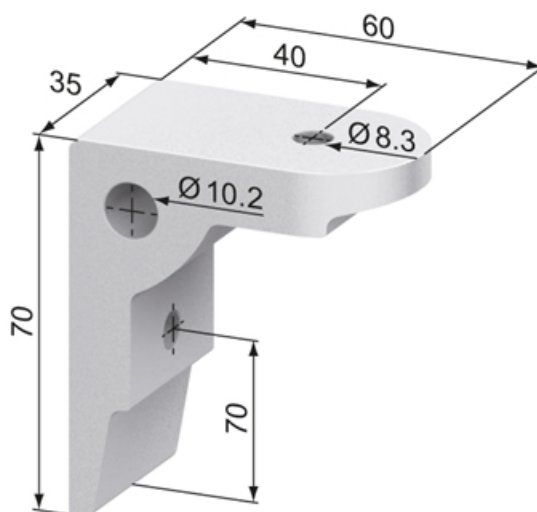
1 x SS2330V attachment screw M8 / L30

1 x SZ8005N bolt type G

Material: Aluminium, natural anodized

System: 40 - Slot 8

Type: Protection Wall Fastening Elements



General Data

Designation	System	Weight (g)
SZ8001N	40 - Slot 8	113.5

Bolt G-type

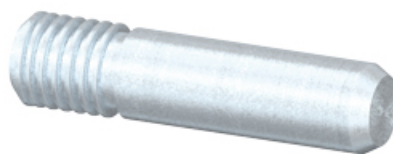
Application:

For the centering of protection panels. The bolt G-type gears with the angle 60 x 70.

Material: Steel, zinc-plated

System: 40 - Slot 8

Type: Protection Wall Fastening Elements



General Data

Designation	System	Weight (g)
SZ8005N	40 - Slot 8	66.1