

Portal Plates

Application:

Portal plates are used to fix large machine frames or portal robots to the floor.

Supply:

2x / 4x jacking screw M 32 x 1.5 x 60

1x pressure plate 100 x 100 x 10 per jacking screw

Acc.:

SZ1732V: 2x heavy duty dowel M 12 x 115

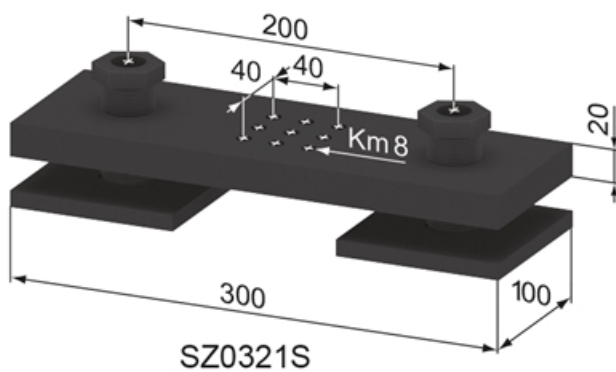
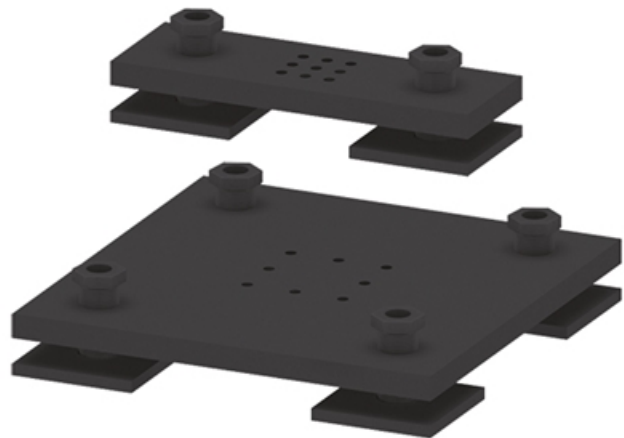
Two fixing sets SZ1732V are required for portal plates with four jacking screws.

Longer floor anchors with a length of 100 mm (SS3100S) are also available.

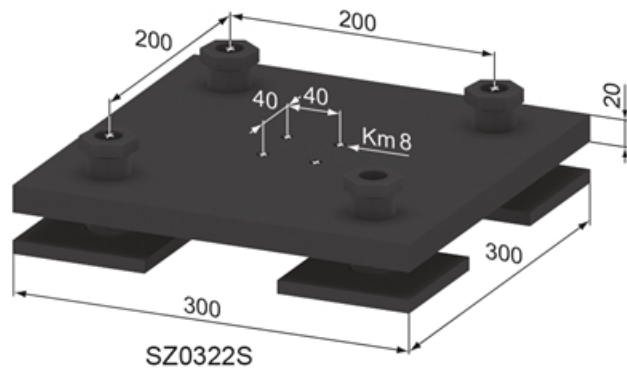
Material: Steel, zinc-plated black

System: 40 - Slot 8

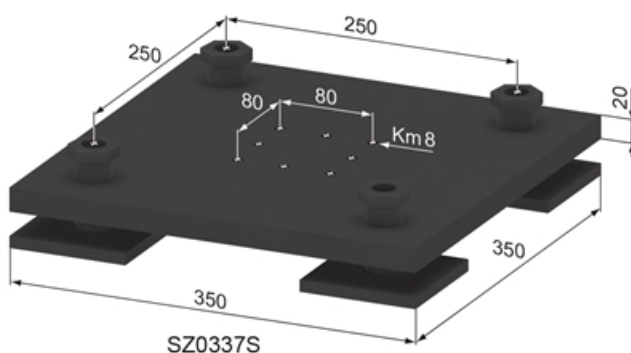
Type: Portal plates



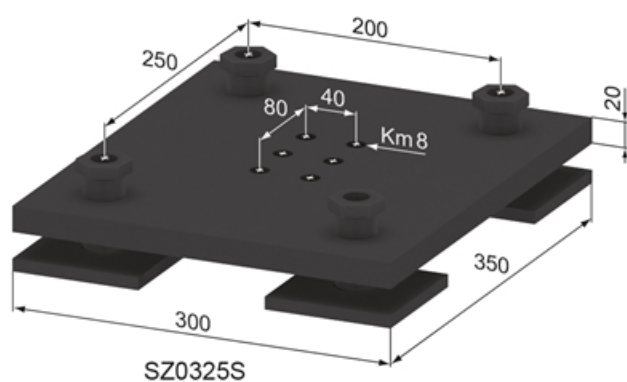
SZ0321S



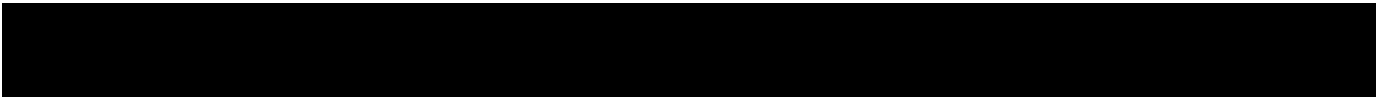
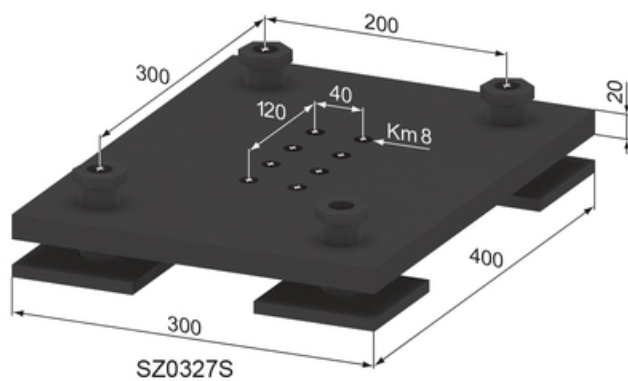
SZ0322S



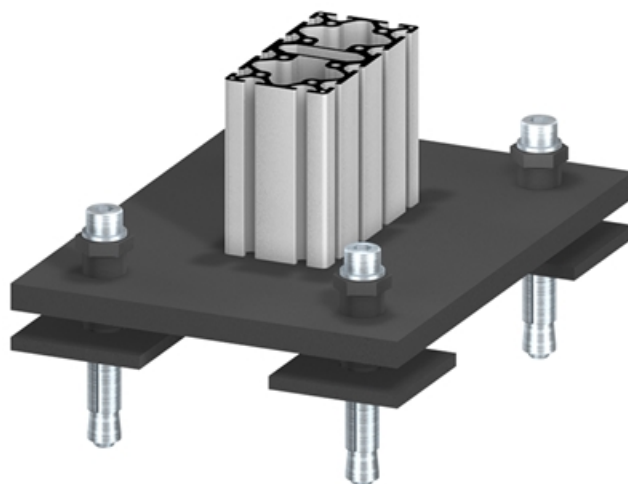
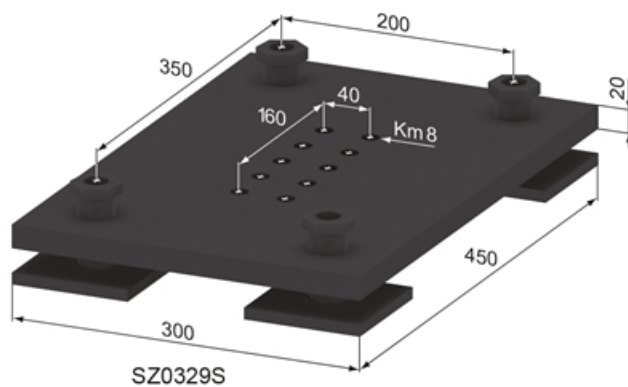
SZ0337S



SZ0325S



Portal Plates



General Data

Designation	Description	System	Weight (kg)
SZ0321S	Portal Plate 100 x 300 / 80 x 80	40 - Slot 8	9.6
SZ0322S	Portal Plate 300 x 300 / 80 x 80	40 - Slot 8	13.6
SZ0337S	Portal Plate 350 x 350 / 120 x 120	40 - Slot 8	17.6
SZ0325S	Portal Plate 350 x 300 / 80 x 120	40 - Slot 8	15.9
SZ0327S	Portal Plate 400 x 300 / 80 x 160	40 - Slot 8	18.3
SZ0329S	Portal Plate 450 x 300 / 80 x 200	40 - Slot 8	20.6