

## Foot Block, Jacking Screws

### Application:

Heavy duty fastening of machine frameworks.

### Acc.:

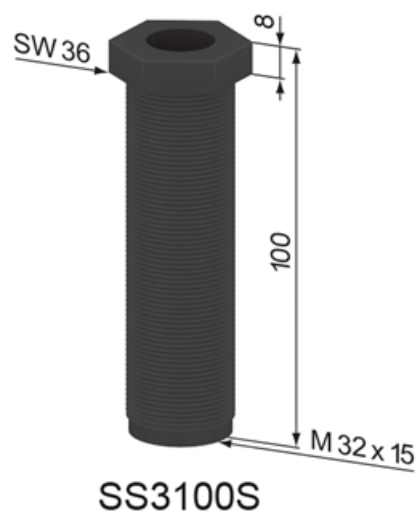
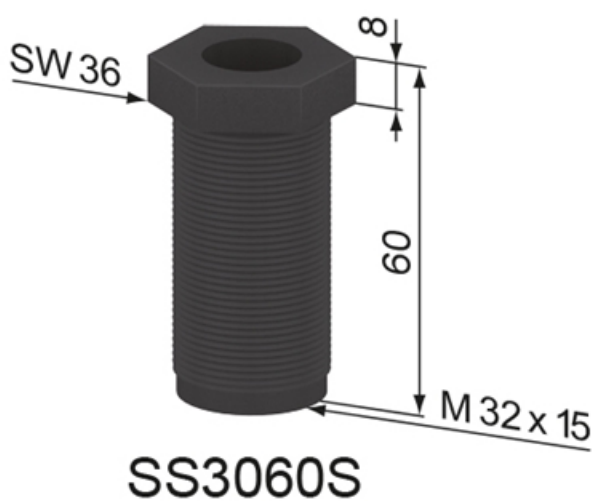
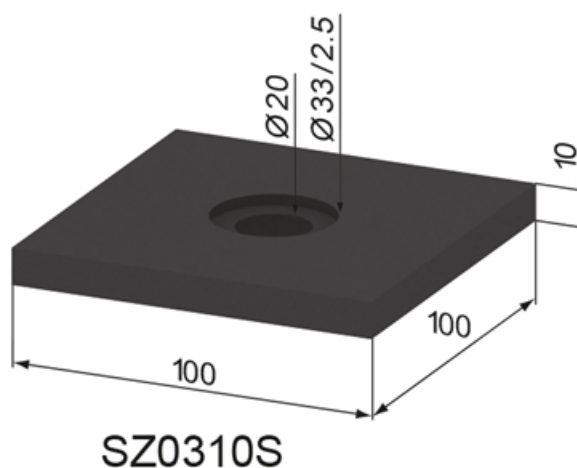
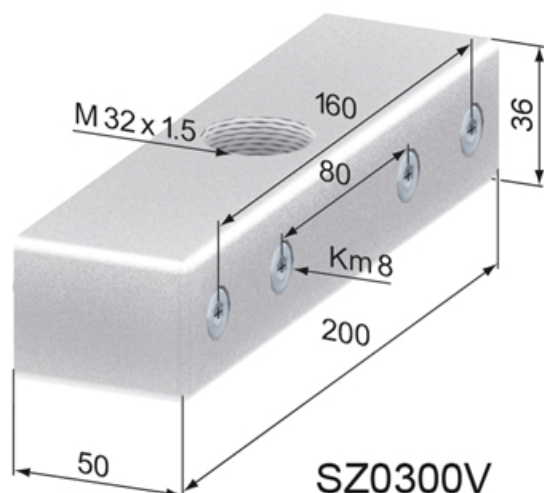
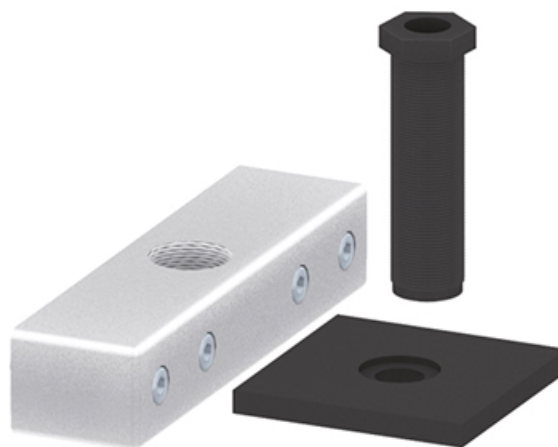
SZ1732V: 2x floor anchor M 12 x 115

Two fixing sets SZ1732V are required for portal plates with four jacking screws.

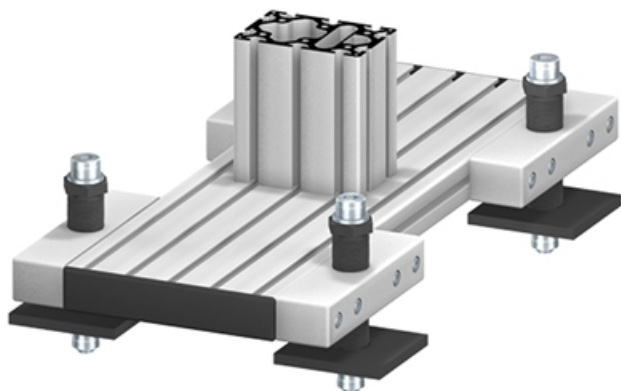
**Material:** Foot block: aluminium, natural anodized. Jacking screw & Pressure plate: steel, black.

**System:** 40 - Slot 8

**Type:** Floor Fixing Elements



## Foot Block, Jacking Screws



## General Data

Designation	Description	System	Weight (g)
<b>SZ0300V</b>	Foot Block M 32 x 1.5	40 - Slot 8	956
<b>SZ0310S</b>	Pressure Plate 100 x 100 x 10	40 - Slot 8	742
<b>SS3060S</b>	Jacking Screw M 32 x 1.5 60 SW 36	40 - Slot 8	226
<b>SS3100S</b>	Jacking Screw M 32 x 1.5 100 SW 36	40 - Slot 8	363