

## Adjusting Elements

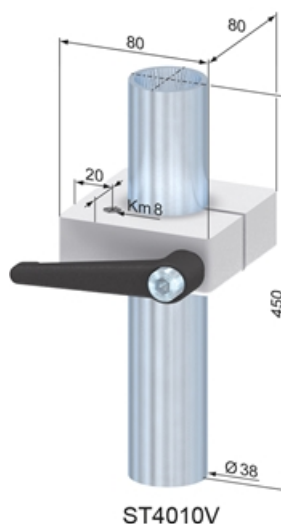
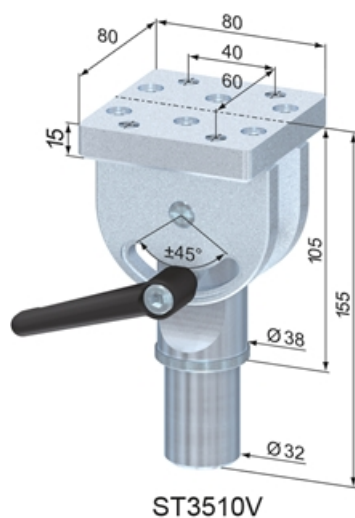
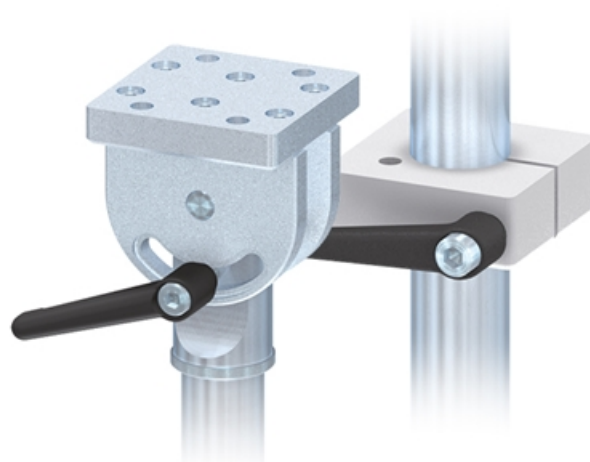
Application:

Suitable for variable angle adjustments as well as for vertical adjustments.

**Material:** Steel, zinc-plated

**System:** 40 - Slot 8

**Type:** Bearing Plates & Adjusting Elements



## General Data

Designation	Description	System	Weight (kg)
ST3510V	Angle Adjuster	40 - Slot 8	2.2
ST4010V	Vertical Adjuster	40 - Slot 8	1.75