

Bearing Plates

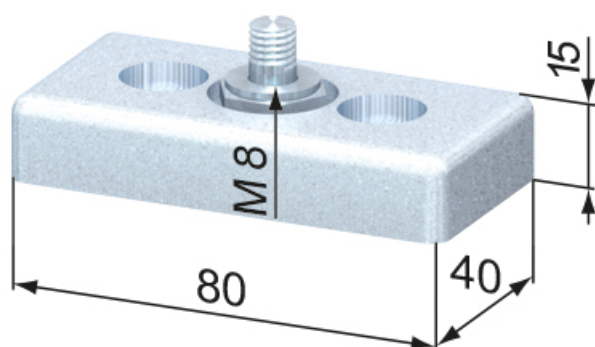
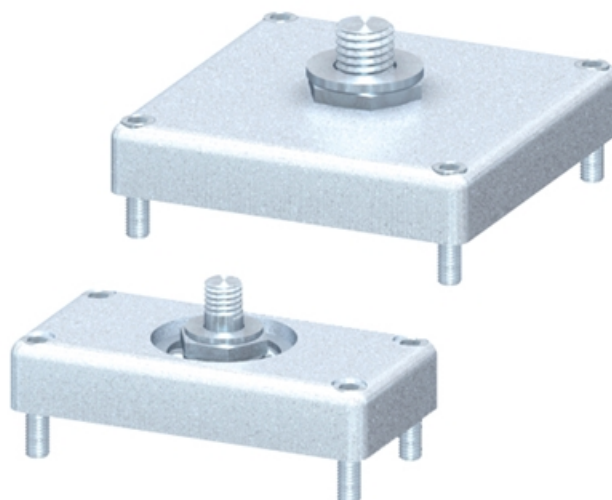
Application:

Suitable for holding shafts and axles.

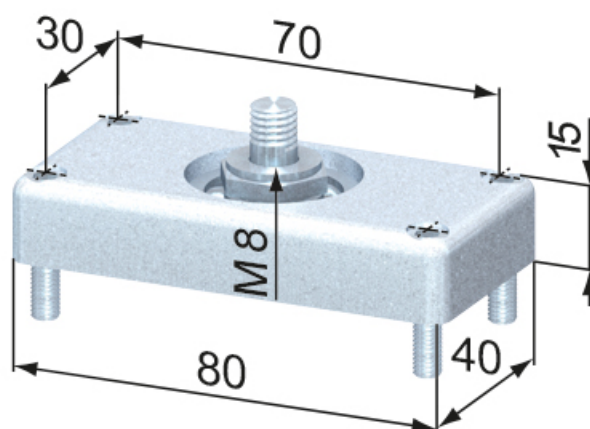
Material: Steel, zinc-plated

System: 40 - Slot 8

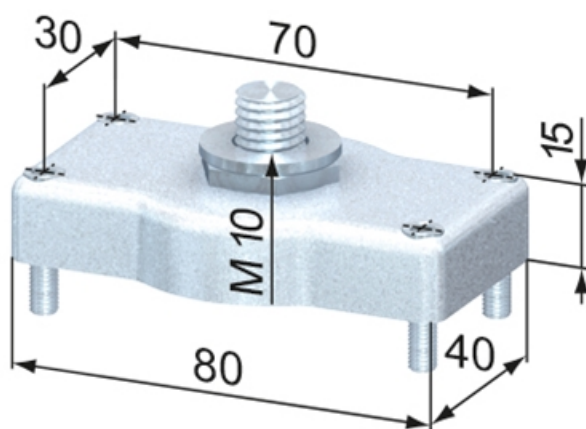
Type: Bearing Plates & Adjusting Elements



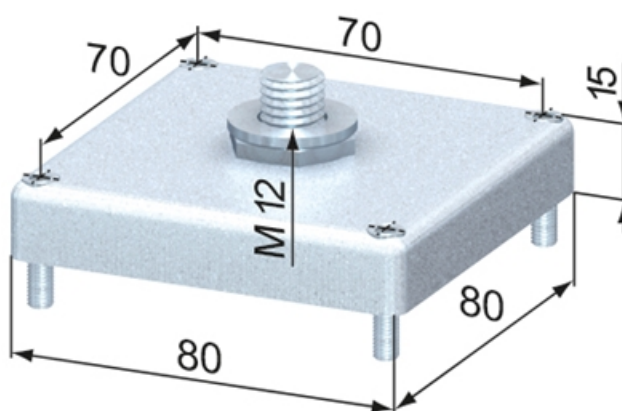
SZ3500V



SZ3510V

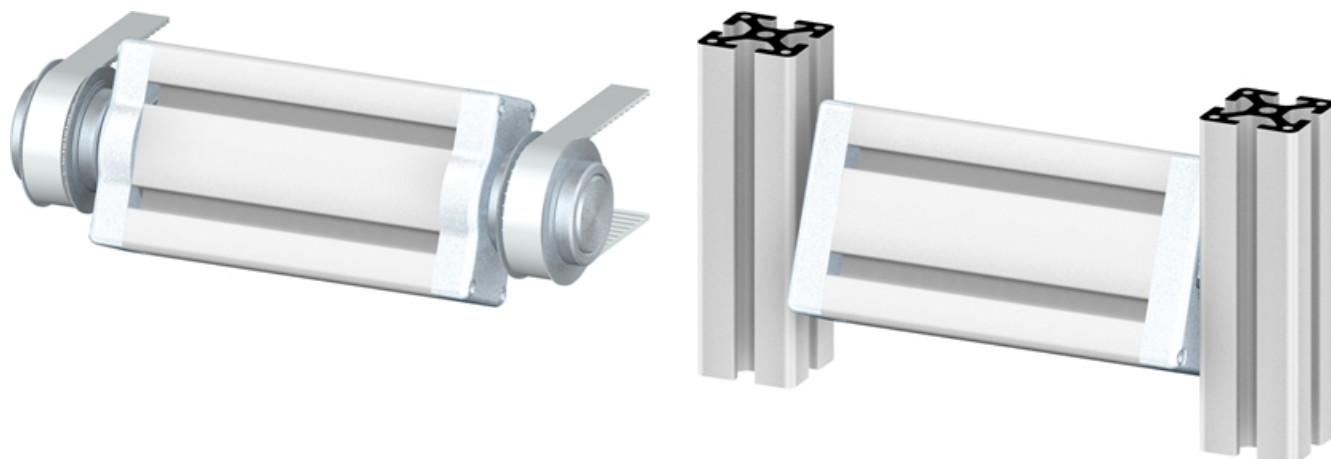


SZ3520V



SZ3530V

Bearing Plates



General Data

Designation	Description	System	Weight (g)
SZ3500V	Bearing Plate 40 x 80 Ø 8	40 - Slot 8	318
SZ3510V	Bearing Plate 40 x 80 Ø 10	40 - Slot 8	310
SZ3520V	Bearing Plate 40 x 80 Ø 20	40 - Slot 8	163
SZ3530V	Bearing Plate 80 x 80 Ø 20	40 - Slot 8	315