

## Bearing Plates

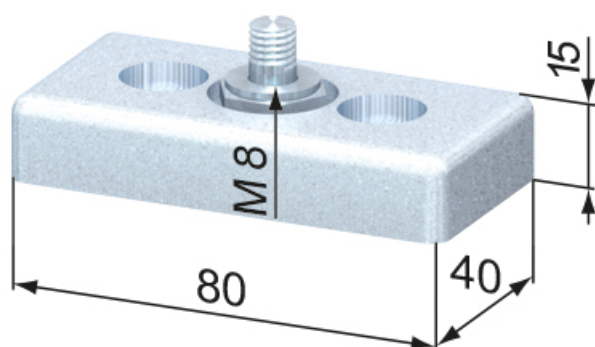
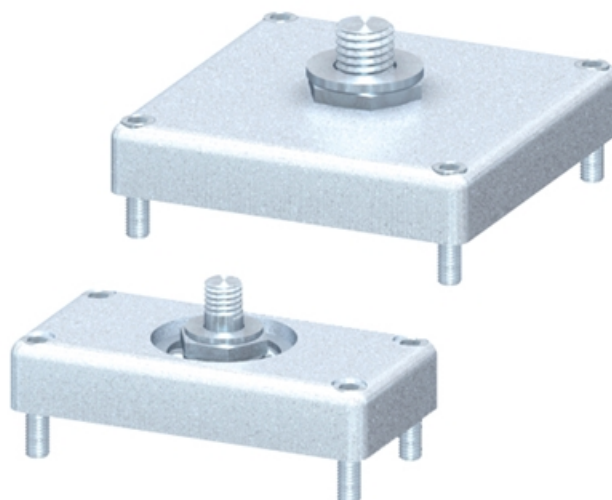
Application:

Suitable for holding shafts and axles.

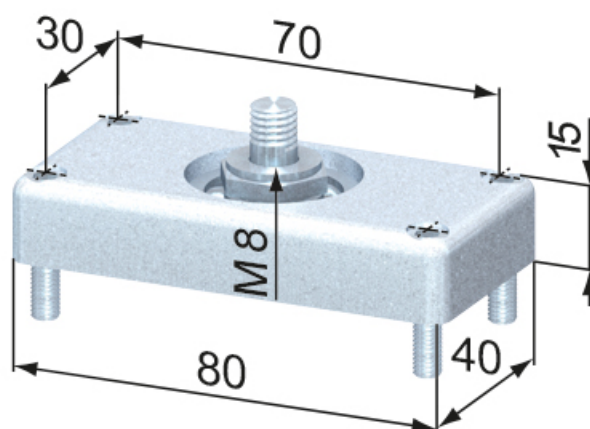
**Material:** Steel, zinc-plated

**System:** 40 - Slot 8

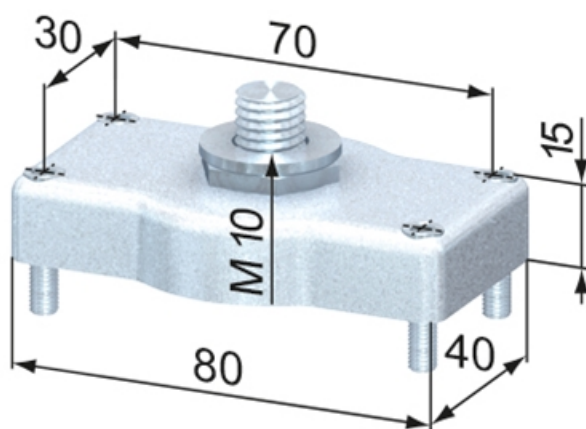
**Type:** Bearing Plates & Adjusting Elements



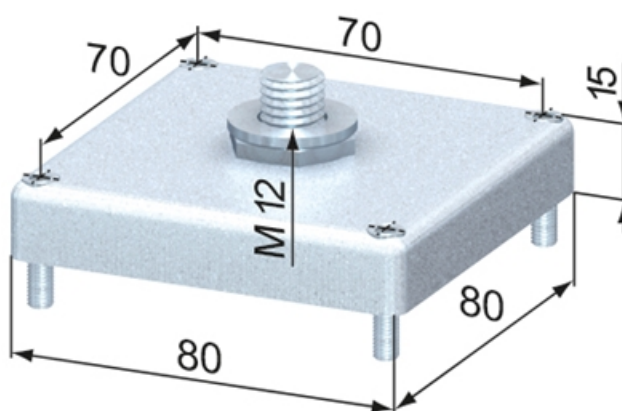
**SZ3500V**



**SZ3510V**

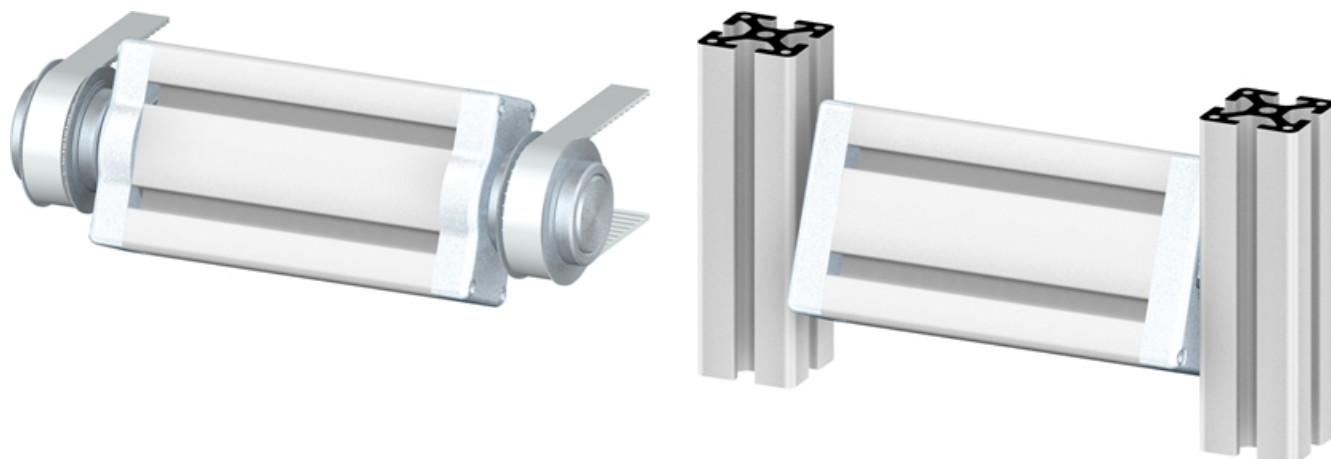


**SZ3520V**



**SZ3530V**

## Bearing Plates



## General Data

Designation	Description	System	Weight (g)
<b>SZ3500V</b>	Bearing Plate 40 x 80 Ø 8	40 - Slot 8	318
<b>SZ3510V</b>	Bearing Plate 40 x 80 Ø 10	40 - Slot 8	310
<b>SZ3520V</b>	Bearing Plate 40 x 80 Ø 20	40 - Slot 8	163
<b>SZ3530V</b>	Bearing Plate 80 x 80 Ø 20	40 - Slot 8	315