

## System Plates

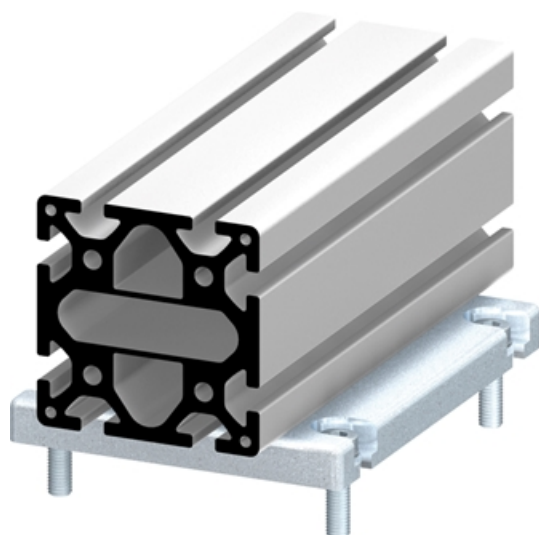
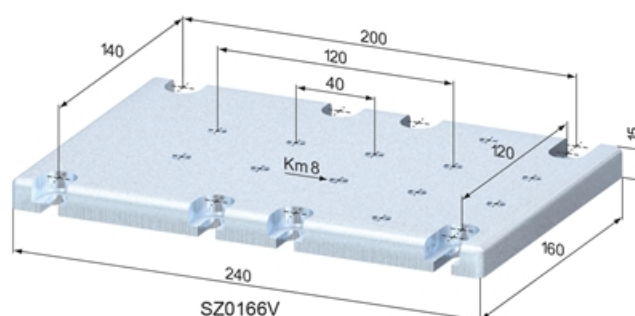
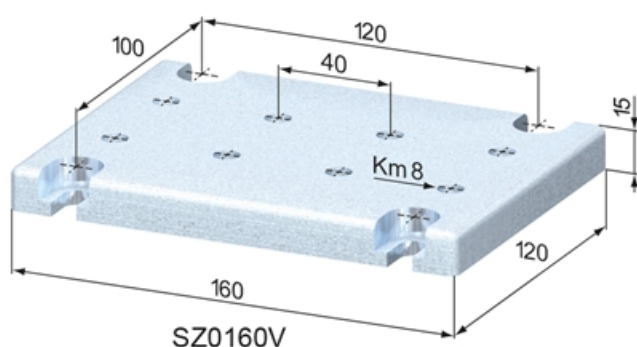
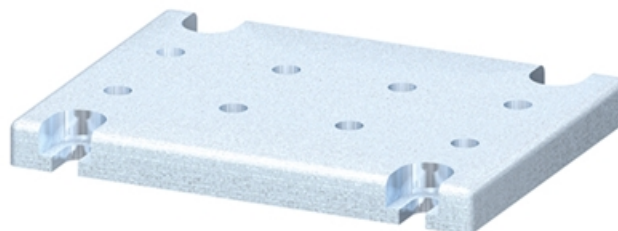
Application:

For fixing profile structures onto countertops.

**Material:** Steel, zinc-plated

**System:** 40 - Slot 8

**Type:** Bearing Plates & Adjusting Elements



## General Data

Designation	Description	System	Weight (kg)
SZ0160V	System Plate 120 x 160 Ø 9, zinc-plated	40 - Slot 8	2
SZ0166V	System Plate 160 x 240 Ø 9, zinc-plated	40 - Slot 8	4