

## Foot Plates 160 x 160

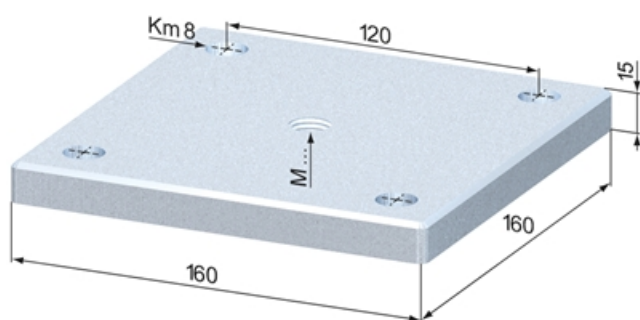
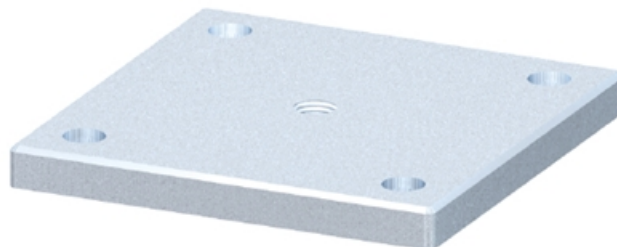
### Application:

Frontal screwing into profiles offers support of ring bolts, castors and adjustable feet.

**Material:** Steel, zinc-plated

**System:** 40 - Slot 8

**Type:** Foot Plates



## General Data

Designation	Description	System	Weight (kg)
SZ0280V	Foot Plate 160 x 160 M 16	40 - Slot 8	2.928
SZ0281V	Foot Plate 160 x 160 M 20	40 - Slot 8	2.914