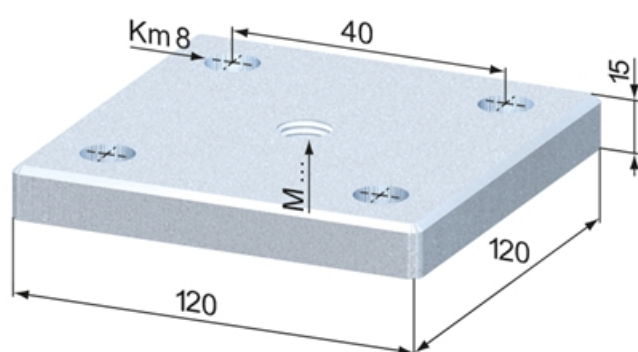
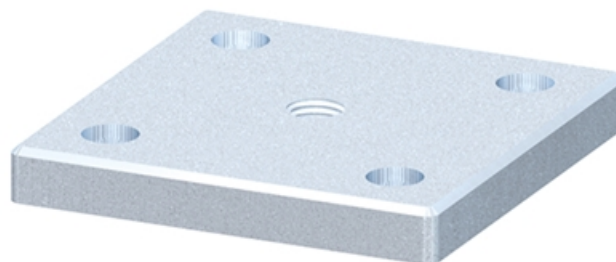


Foot Plates 120 x 120

Material: Steel, zinc-plated

System: 40 - Slot 8

Type: Foot Plates



General Data

Designation	Description	System	Weight (kg)
SZ0282V	Foot Plate 120 x 120 M 16, zinc-plated	40 - Slot 8	1.59
SZ0283V	Foot Plate 120 x 120 M 20, zinc-plated	40 - Slot 8	1.57