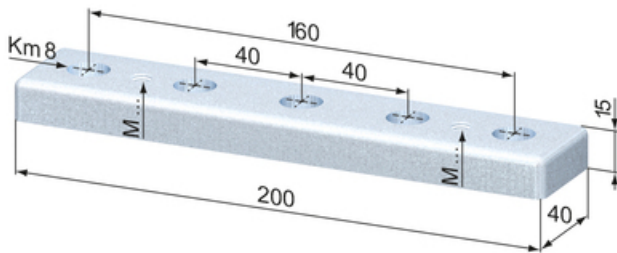
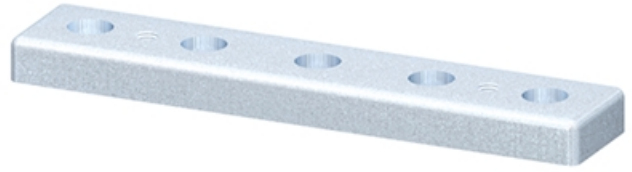


Foot Plates 40 x 200

Material: Steel, zinc-plated

System: 40



General Data

Designation	Description	Weight (g)
SZ0265V	Foot Plate 40 x 200 M 8	905
SZ0266V	Foot Plate 40 x 200 M 10	902
SZ0267V	Foot Plate 40 x 200 M 12	898
SZ0268V	Foot Plate 40 x 200 M 16	887
SZ0269V	Foot Plate 40 x 200 M 20	874