

## Double Castors Ø 75, rubber

Application:

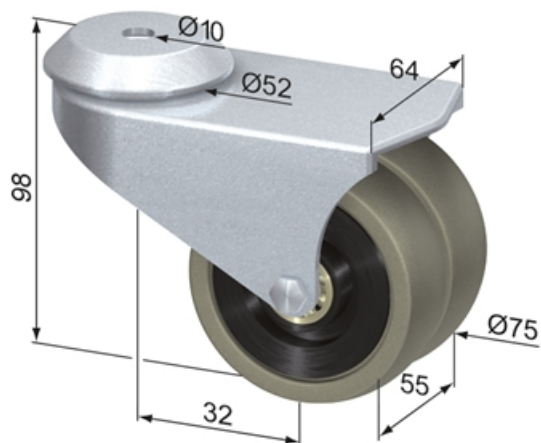
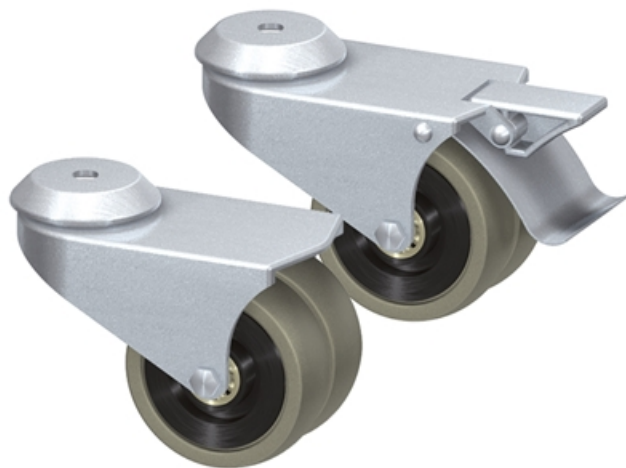
For carts and benches with heavy load.

**Material:** Housing: steel, zinc-plated

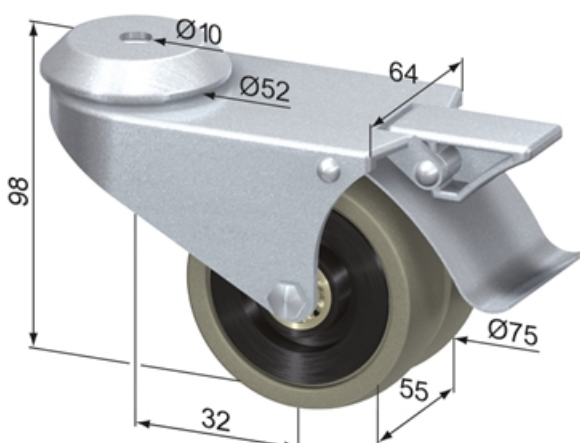
**System:** 40 - Slot 8

**Temperature range (°C):** -20° to +60°

**Type:** Castors



SF2400V



SF2401V

## General Data

Designation	Description	System	Weight (g)	Max. Load (kg)
SF2400V	Double Castor Ø 75, rubber	40 - Slot 8	581	80
SF2401V	Double Castor Ø 75, rubber, braked	40 - Slot 8	666	80