

Adjustable Foot Ø 136 with anti-vibration pad and fixing holes

Application:

Height adjustable foot for leveling machines and structures.
Any tipping is compensated by a ball and striker pad.

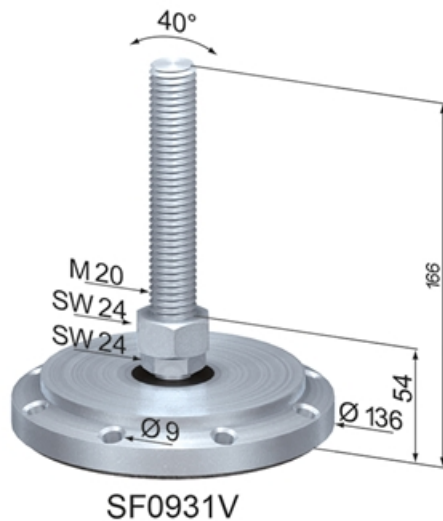
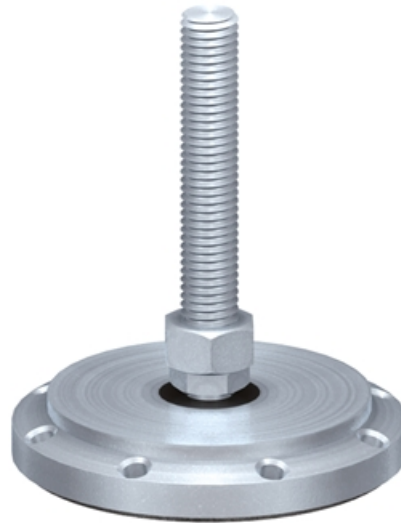
Two fixing sets SZ1700V are required for adjustable feet Ø 136.

Material: Pad: SVDB steel, zinc-plated; with anti-vibr. pad / fixing holes. Striker pad: POM, black. Spindle & Hexagon nut: Steel, zinc-plated

Max. Load (kg): 1300

System: 40 - Slot 8

Type: Feet



General Data

Designation	Description	System	Hmin (mm)	Weight (kg)
SF0922V	Adjustable Foot Ø 136 M16 SVDB / L 166	40 - Slot 8	48	2.11