

## Adjustable Feet Ø 79 with anti-vibration pad

### Application:

Height adjustable foot for leveling machines and structures.

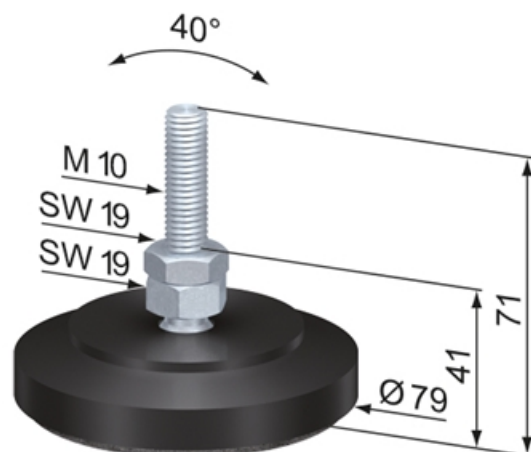
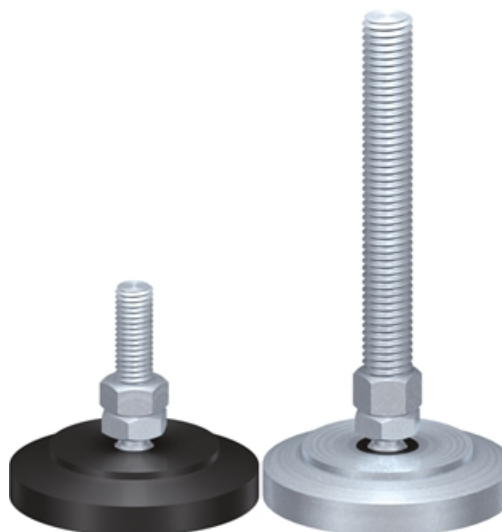
Any tipping is compensated by a ball and striker pad.

**Material:** Spindle & Hexagon nut: Steel, zinc-plated

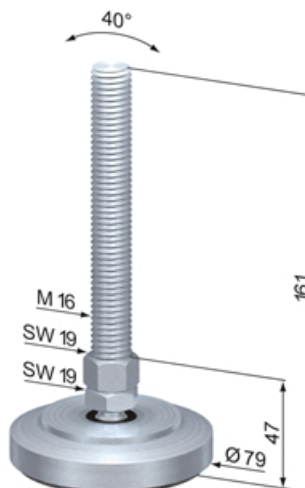
**Max. Load (kg):** 750

**System:** 40 - Slot 8; 30 - Slot 6; 20 - Slot 5

**Type:** Feet



SF0447S



SF0481V

## General Data

| Designation    | Description                             | Pad Material                                     | Hmin (mm) | Weight (g) |
|----------------|---|--|-----------|------------|
| <b>SF0443S</b> | Adjustable Foot Ø 79 M8<br>PSD / L 71   | "POM, black; with anti-<br>vibration pad"        | 41        | 153        |
| <b>SF0447S</b> | Adjustable Foot Ø 79 M10<br>PSD / L 71  | "POM, black; with anti-<br>vibration pad"        | 41        | 162        |
| <b>SF0449S</b> | Adjustable Foot Ø 79 M12<br>PSD / L 71  | "POM, black; with anti-<br>vibration pad"        | 46        | 179        |
| <b>SF0481V</b> | Adjustable Foot Ø 79 M16<br>SVD / L 161 | "Steel, zinc-plated; with<br>anti-vibration pad" | 47        | 692        |