

Central Fastener 40 NL / NQ

Application:

Special applications. The twist-in anchor, with an anti-twist feature, can be fixed in the profile t-slot at any point. The fastener is used where high bending moments are required.

Assembly:

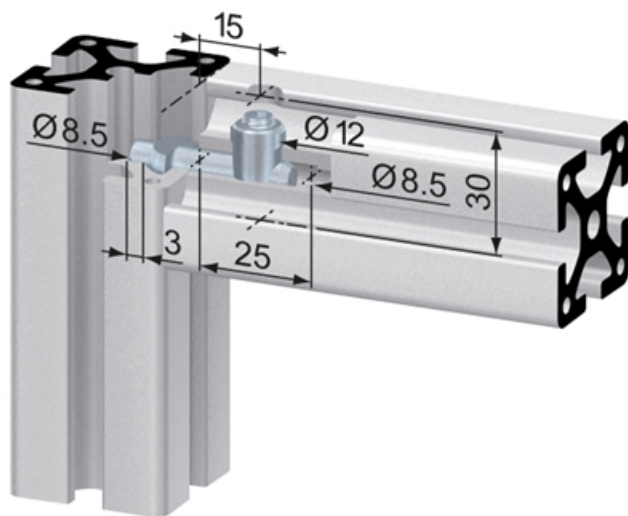
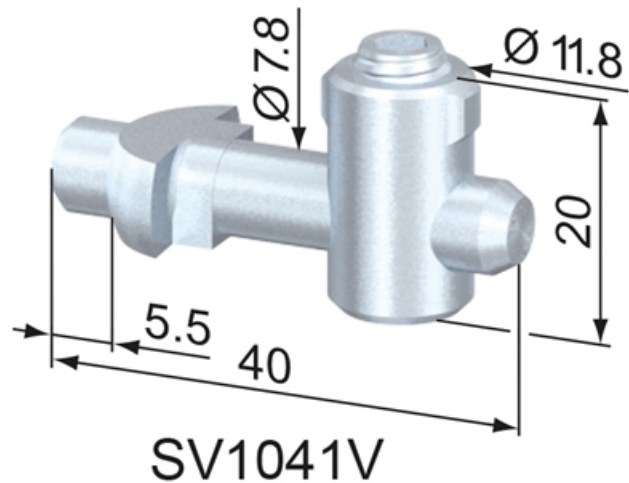
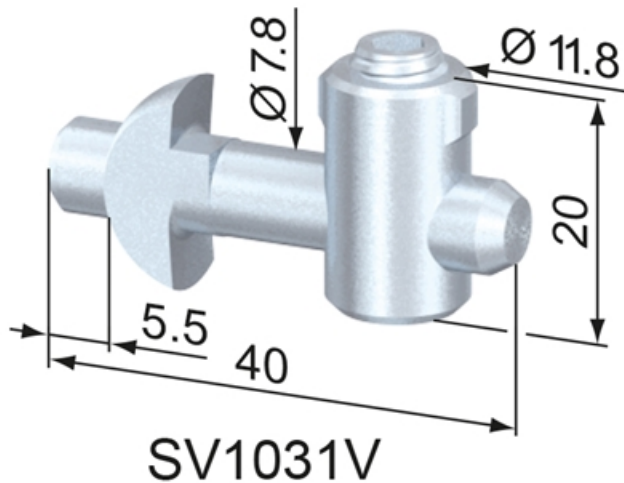
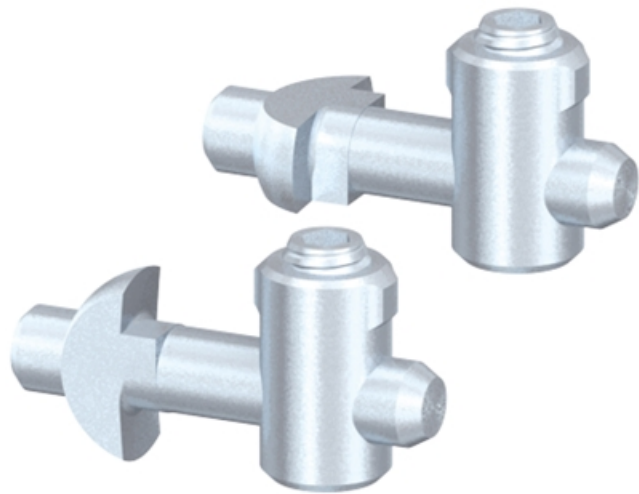
Bore hole for the barrel housing: $\varnothing 12$ mm, 15 mm from profile end, 30 mm deep.

Bore for center hole on end of profile for anchor: $\varnothing 8.5$ mm, 25 mm deep.

Hole for locking pin on anchor in opposing profile: $\varnothing 8.5$ mm, 20 mm from profile end, 3 mm deep.

Material: Steel, zinc-plated

System: 40



General Data

Designation	Description
SV1031V	Central Fastener 40 NL
SV1041V	Central Fastener 40 NQ