

Quick Fastener 40

Application:

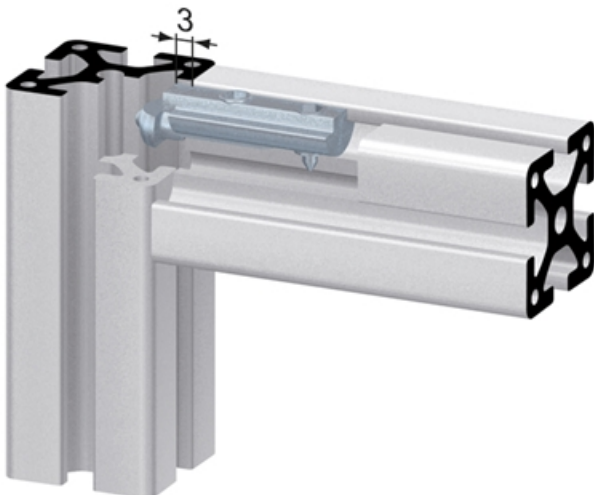
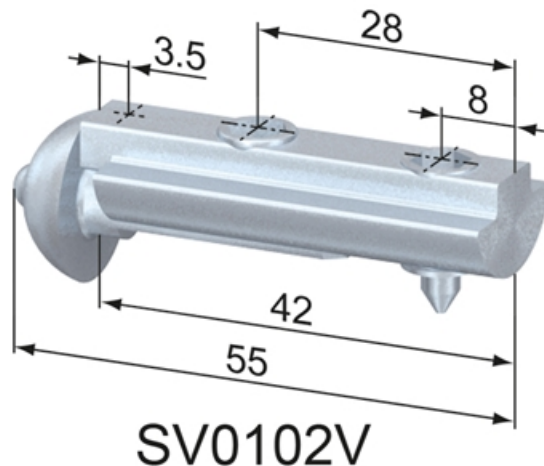
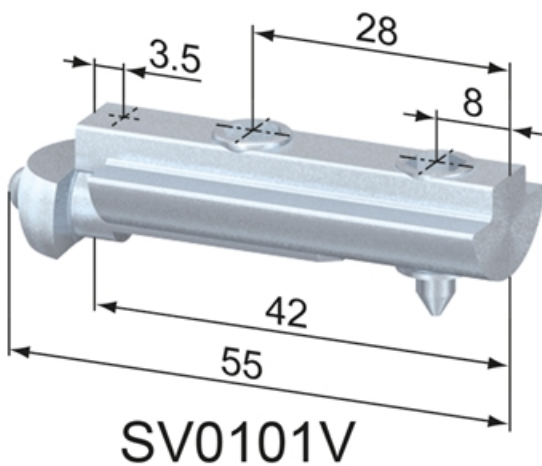
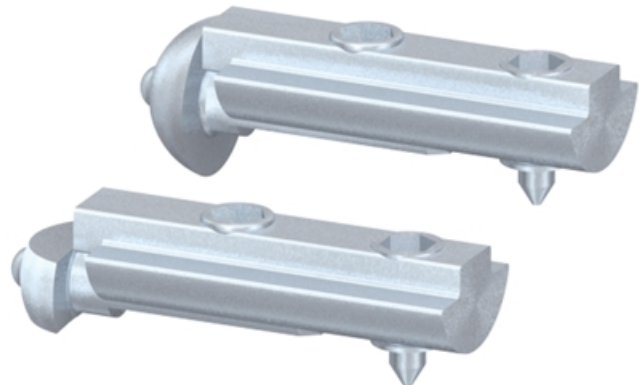
No machining of either profile is required when using this fastener. The RH grub screw is driven into the profile to retain the t-nut, the LH grub retains and tensions the anchor during the fastening process. The anchor has an anti-twist feature.

Assembly:

Insert the t-nut portion of fastener so that the anti-twist feature protrudes 3 mm over the end of the profile. Screw in the cone point set screw on the t-nut portion of fastener into the profile. Insert the anchor into the t-slot of the mating profile and tighten into place by means of the set screw on the t-nut portion of the fastener.

Material: Steel, zinc-plated

System: 40



General Data

Designation	Description	Weight (g)
SV0101V	Quick Fastener 40	46
SV0102V	Quick Fastener 40 S	47