

## SP6300N – Mesh Guarding Profile 40

Panel thickness 7.8 mm.

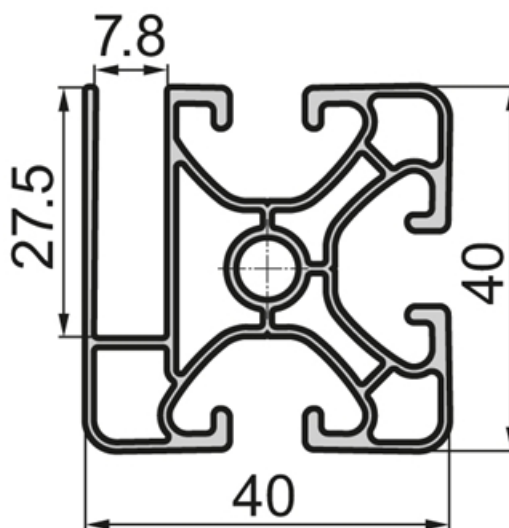
**System:** 40 - Slot 8

**Dimensions:** 40x40

**Length (mm):** 6000

**Material Quality:** Superlight

**Profile Type:** Closed



## General Data

Designation	I <sub>x</sub> (cm <sup>4</sup> )	I <sub>y</sub> (cm <sup>4</sup> )	W <sub>x</sub> (cm <sup>3</sup> )	W <sub>y</sub> (cm <sup>3</sup> )	A (cm <sup>2</sup> )
SP6300N	5.90	5.74	0.29	0.27	3.67

Designation	Mass (kg/m)
SP6300N	0.99