

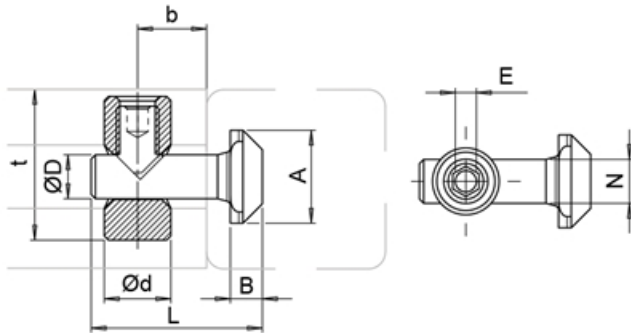
Central Fastener 6 Anti-rotate

To connect two aluminum profiles at right angles. A hole must be drilled through one of the profiles to provide access to the tightening screw.

Angle: 0° / 90°

Material: Stainless steel

System: 6



Variant Data

Designation	Description	Slot	A	B	D
PZ3912	Central Fastener 6 Anti-rotate	6	11.0	3.8	5.2

Designation	L	b	Weight (g)	E
PZ3912	20.3	10	9.5	2.5