

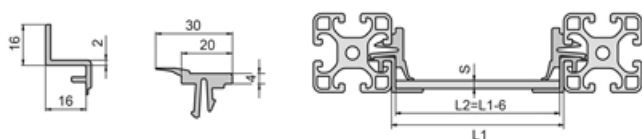
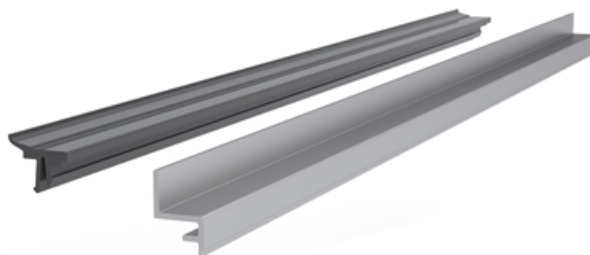
Panel Clamping Strip

For fitting plates into closed frames later.

In order to improve the appearance, the mounted plates are more or less flush with the outer edge of the base frame. No need to remove existing constructions. The plate rests on an aluminium strip placed in the profile slot. An elastic plastic strip is used to fasten the plate afterwards.

System: 40 - Slot 8

Type: Sealing, Coverstrips & Rubbers



General Data

Designation	Description	System	Material	Length	S
PP1908	Panel clamping strip 8 Al	40 - Slot 8	Aluminium	3000	2-4
PZ1901	Panel clamping strip 8	40 - Slot 8	Grey PP/TPE, similar to RAL7042	3000	-