

Magnetic Catch

Easy closing of sliding and swing doors.
Adapts to the thickness of surface elements.

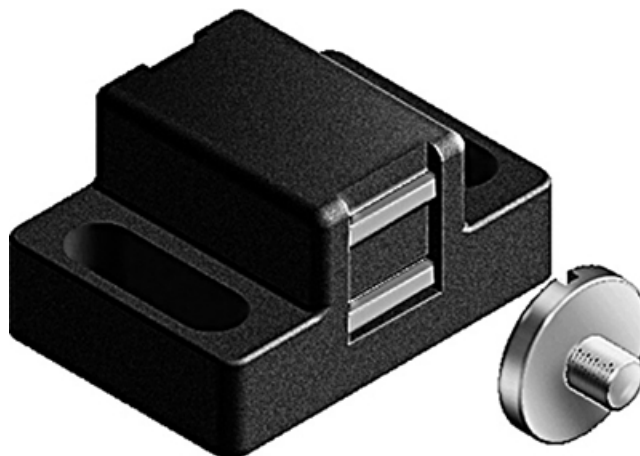
Mount Slot 5: by M4 × 5 screw (DIN921), galvanised steel

Mount Slot 8: by M5 × 6 screw (DIN921), galvanised steel

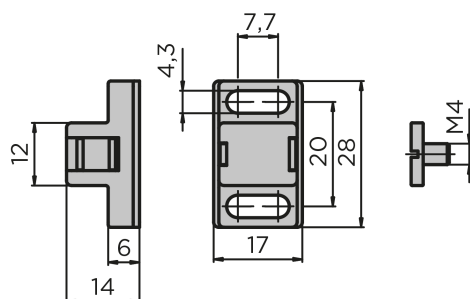
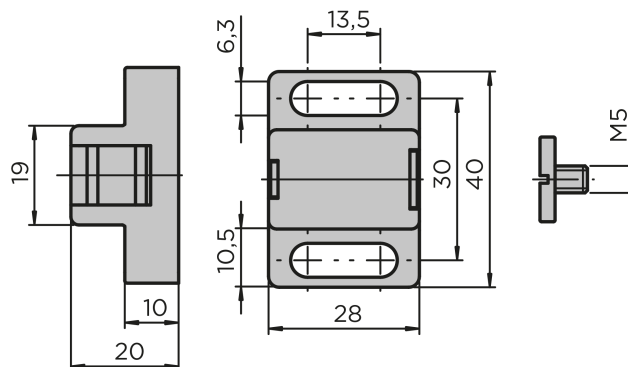
Material: Black plastic (PA), fibreglass-reinforced

System: 40 - Slot 8; 30 - Slot 6; 20 - Slot 5

Type: Door Latches & Interlocks



General Data

Slot 5

Slot 8


Designation	Description	Locking force (N)
PZ5057	Magnetic catch	Approx. 5 (front) / 3 (back)
PZ1610	Magnetic catch	Approx. 20 (front) / 10 (back)