

Emergency Door Lock Opener

Emergency release at the back of the Compact Catch Lock. Matches profiles 30,40.

Material: Base body and push-button: Plastic (PA6),
fibreglass-reinforced

Unlocking bar: Steel

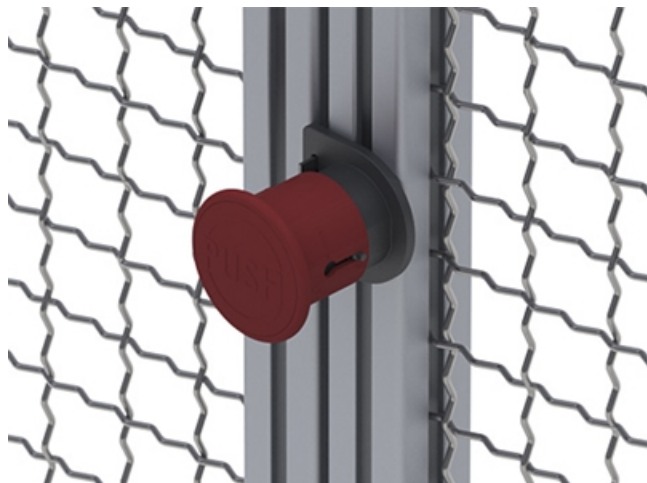
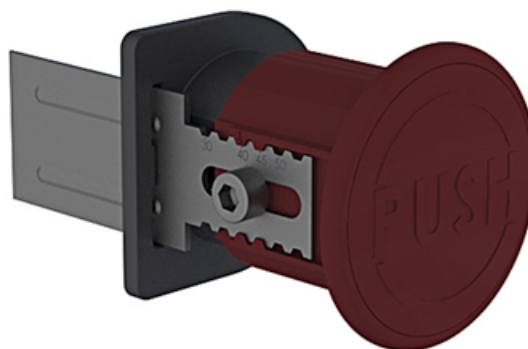
Colour: Base body: Black

Push-button: Red

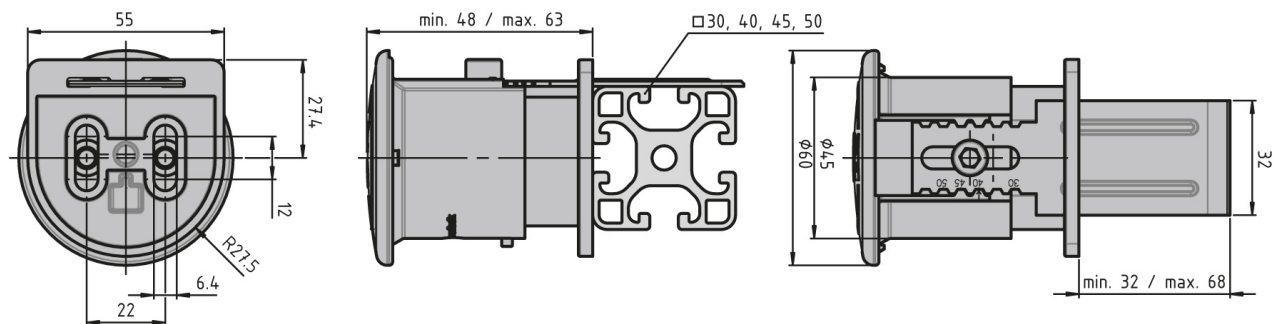
Mount: By two M6 × 20 cheese head screws (DIN 912) at the front

System: 40 - Slot 8; 30 - Slot 6

Type: Door Latches & Interlocks



General Data



| Designation | Description | Weight (g) |
|-------------|-----------------------------|------------|
| PZ5050 | Emergency catch lock opener | 110.8 |