

## BF80E

This table shows a selection of BF80E standard conveyor sizes. Given speeds are based on using an MS71A-4 with the appropriate SB050 gear.

Recommended max. load 150 kg. The recommended max load is evenly spread over the entire conveyor and is in relation to a nominal width and length.

Dimensions in mm.

For other dimensions please contact Rollco.

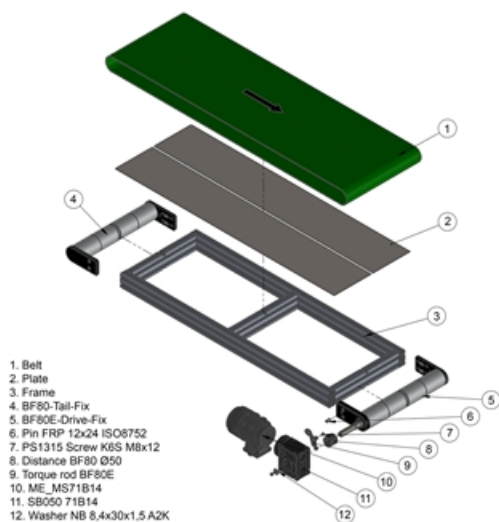
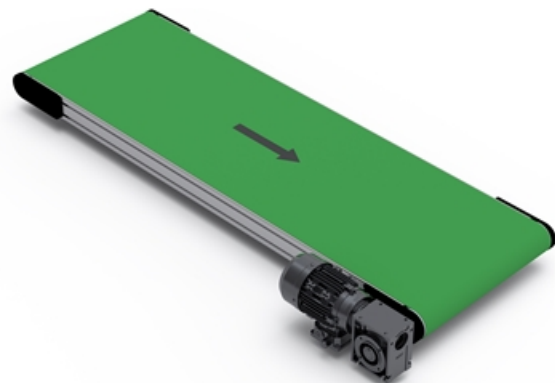
**Length (mm):** Up to 6000

**Gear ratio (I):** 10 / 15 / 20 / 25 / 30 / 40 / 50 / 60 / 80 / 100

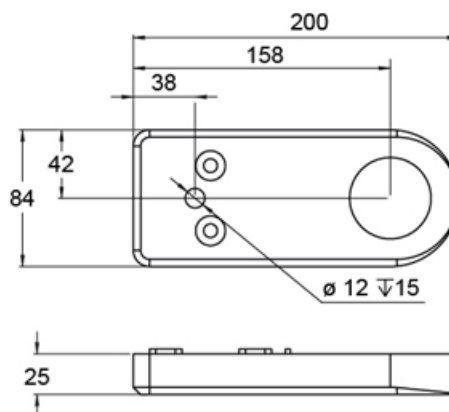
**Speed (m/min):** 36 (36.2) / 24 (24.3) / 18 (18.2) / 15 (14.5) / 12 (12.2) / 9 (9.3) / 7 (7.4) / 6 (6.1) / 5 (4.5) / 4 (3.7)

**Drive side:** Right/left

**Motor Position:** Horizontal/vertical — 1-4

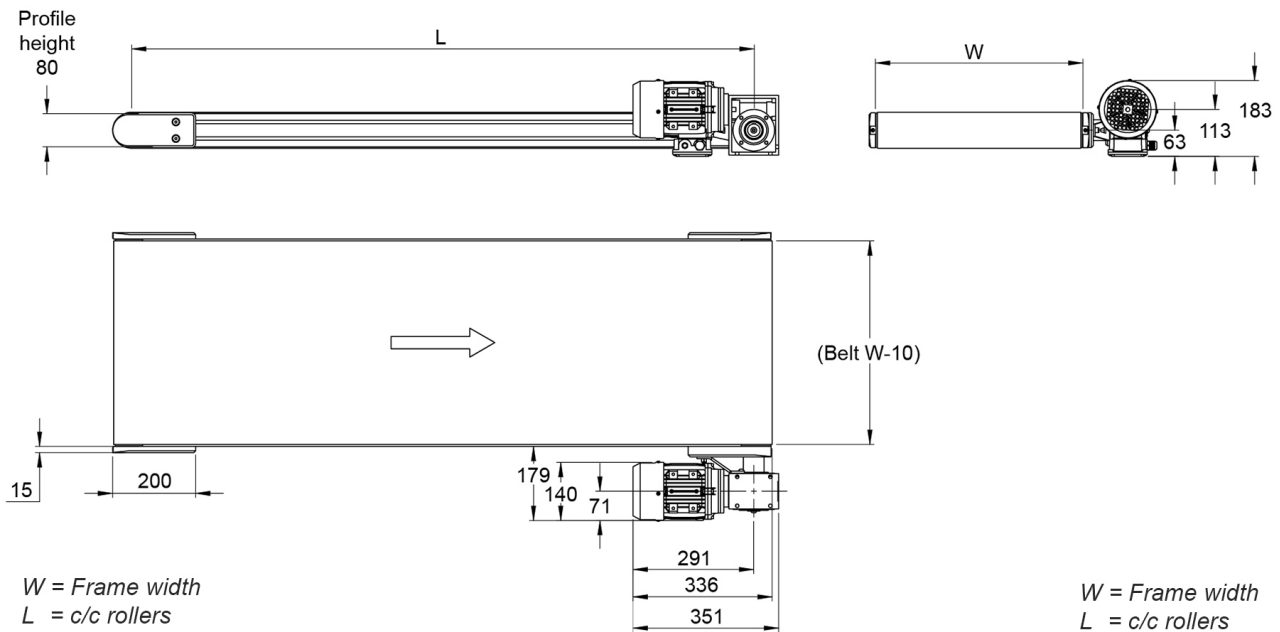


### BF80E Drive holder



Gear ratio (I)	Speed (m/min)
10	36 (36,2)
15	24 (24,3)
20	18 (18,2)
25	15 (14,5)
30	12 (12,2)
40	9 (9,3)
50	7 (7,4)
60	6 (6,1)
80	5 (4,5)
100	4 (3,7)

## General Data



Designation	Width (mm)
<b>BF80E - 500</b>	500
<b>BF80E - 600</b>	600
<b>BF80E - 700</b>	700
<b>BF80E - 800</b>	800
<b>BF80E - 900</b>	900
<b>BF80E - 1000</b>	1000