

## Corner Angle 30

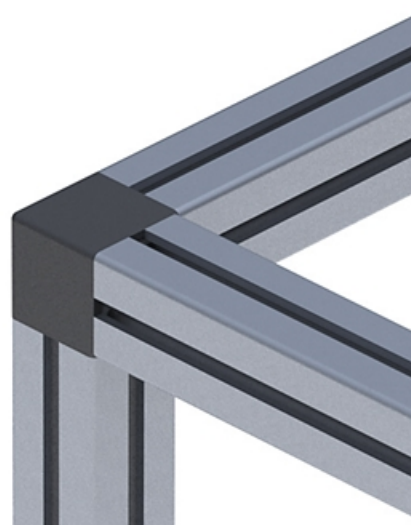
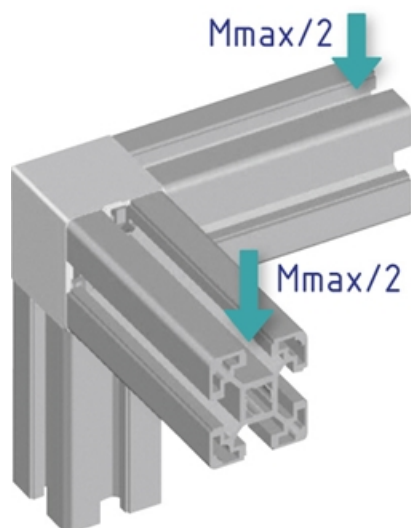
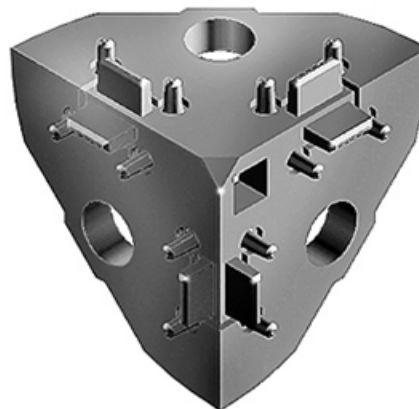
Right-angled links between up to three square or semi-circular profiles of the same cross section. Square or round caps for protection against injury and dirt.

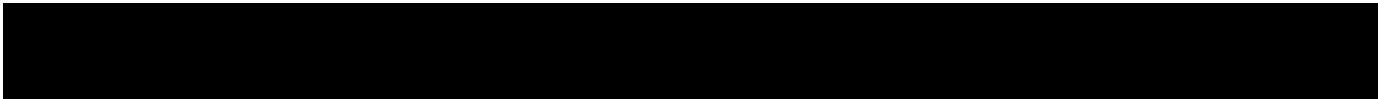
Material: Corner angle: Uncoated die-cast zinc  
Caps: plastic (PA).

Note: The caps in the sets are not ESD-ready.

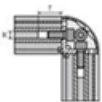
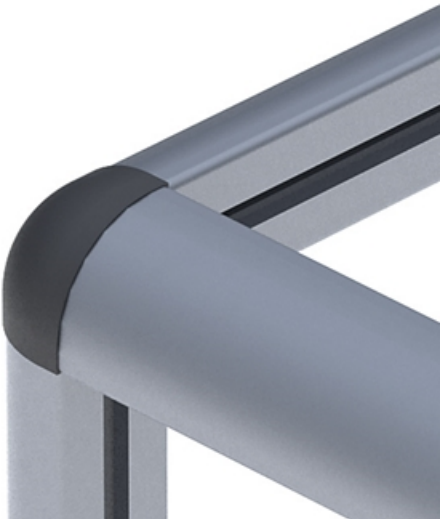
**System:** 30 - Slot 6

**Type:** Angles Brackets and Corners; Fasteners



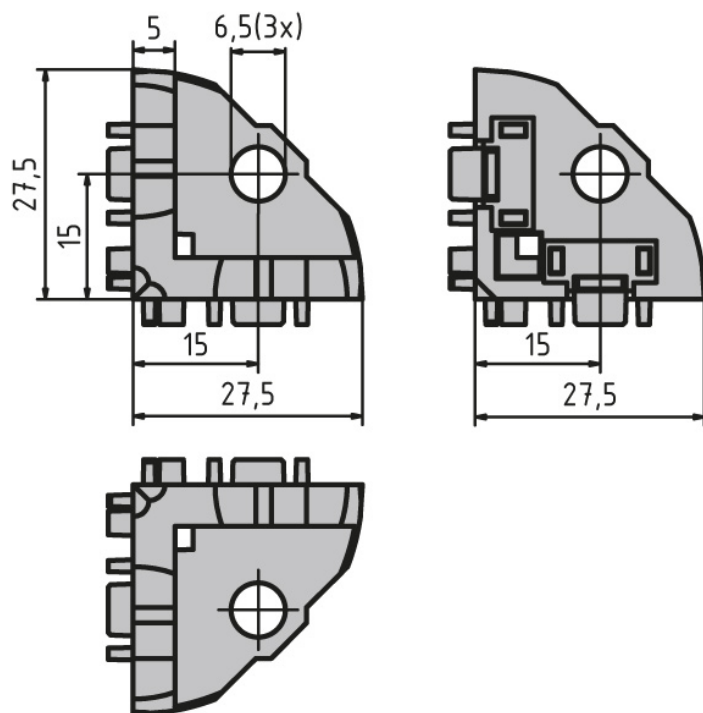


# Corner Angle 30



	5	6
Machining of corner angle	Profile 20x20	Profile 30x30
Thread (M)	M5	M5
Depth (T)	25 mm	25 mm

## General Data



Designation	Description	System	F (Nm)	ESD
<b>PZ5017</b>	Corner angle 30 including 3 M6 × 16 screws (ISO 7380)	30 - Slot 6	40	Yes
<b>PV1076</b>	Corner angle 30 including 3 M6 × 16 screws (ISO 7380) and square black cap	30 - Slot 6	40	Yes
<b>PZ5018</b>	Corner angle 30 including 3 M6 × 16 screws (ISO 7380) and square grey cap (RAL7004)	30 - Slot 6	40	Yes
<b>PZ5298</b>	Corner angle 30 including 3 M6 × 16 screws (ISO 7380) and round black cap	30 - Slot 6	40	Yes
<b>PA1208</b>	Round black cap	30 - Slot 6	-	-
<b>PA1209</b>	Square black cap	30 - Slot 6	-	-
<b>PA1210</b>	Square grey cap (RAL7004)	30 - Slot 6	-	-