

## Bracket 30 × 30

Material: Bracket: Die-cast zinc, uncoated and silver powder coated.

Cap: Black plastic (PA)

Mounting kit: Galvanised steel

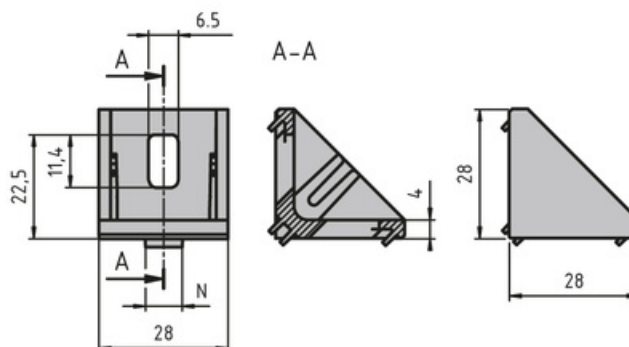
Mounting material:

2× M6 slot 6 slot nuts with step

2× M6 × 14 screw (DIN 7380)

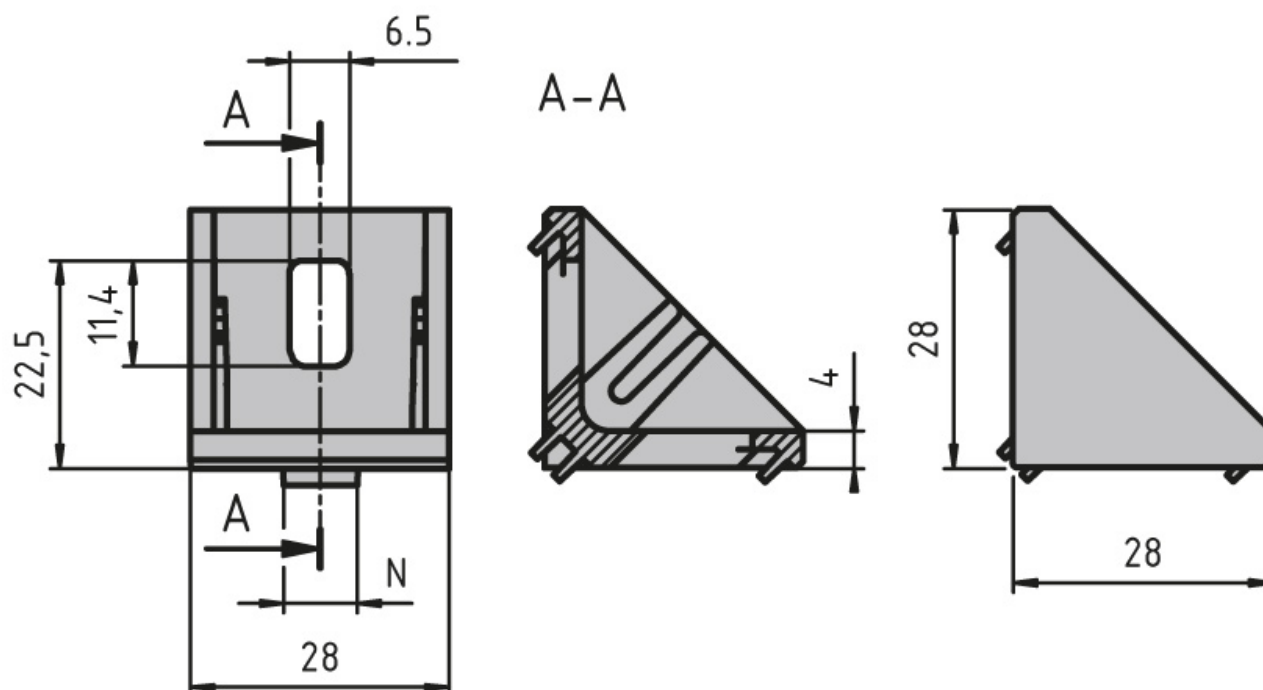
**System:** 30 - Slot 6

**Type:** Angles Brackets and Corners; Fasteners



<b>Fmax (N)</b>	<b>Mmax 1 (Nm)</b>	<b>Mmax 2 (Nm)</b>
500	15	40

## General Data



Designation	Description	System	ESD
<b>PZ5001</b>	Bracket 30 × 30	30 - Slot 6	-
<b>PZ5002</b>	Bracket 30 × 30 with mounting material and ABDK	30 - Slot 6	-
<b>PZ5003</b>	Bracket 30 × 30 silver powder coated with mounting material and ABDK	30 - Slot 6	Yes
<b>PA1202</b>	Cap 30 × 30	30 - Slot 6	-