

## Bracket 20 × 20

Material: Bracket: Die-cast zinc, uncoated and silver powder coated.

Cap: Black plastic (PA)

Mounting kit: Galvanised steel

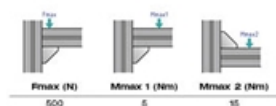
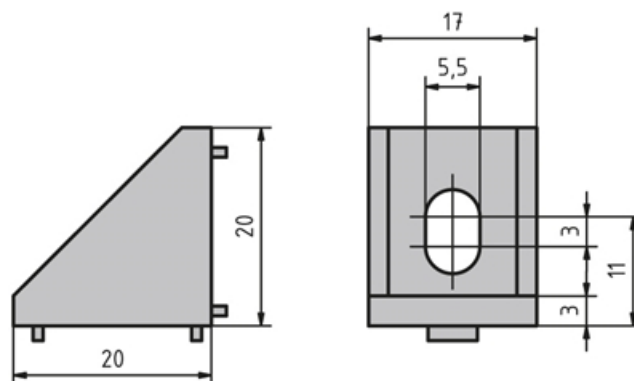
Mounting material:

2× M5 slot 5 slot nuts with step

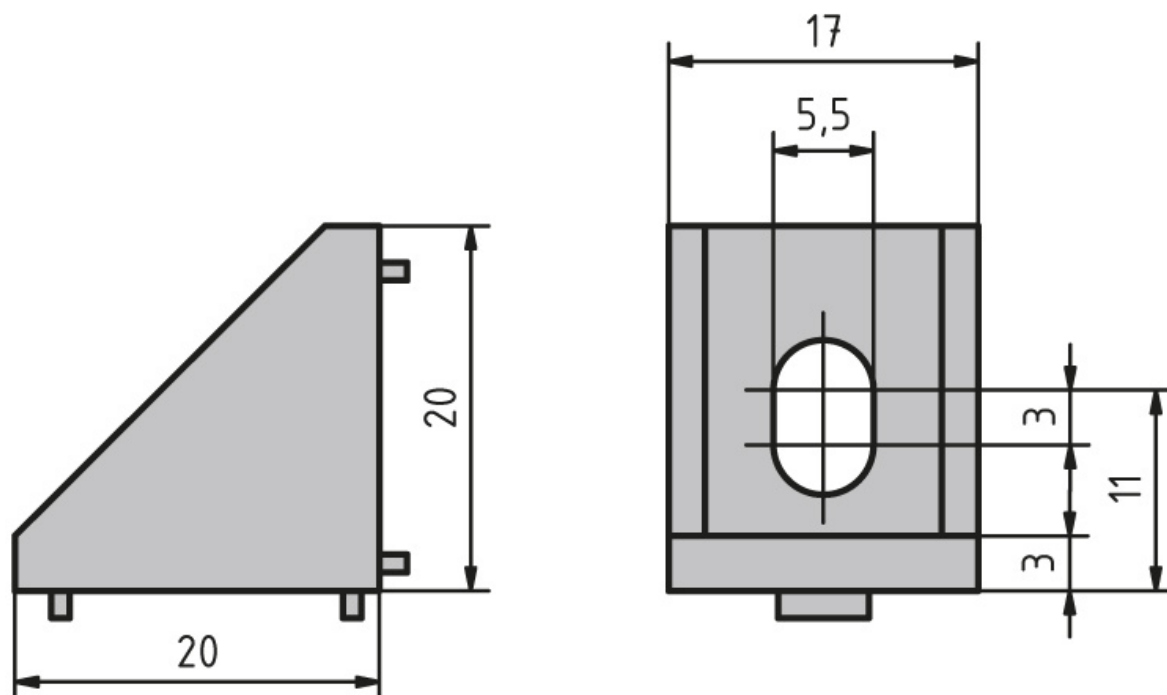
2× M5 × 8 screw (DIN 6912)

**System:** 20 - Slot 5

**Type:** Angles Brackets and Corners; Fasteners



## General Data



Designation	Description	System	ESD
<b>PZ5005</b>	Bracket 20 × 20	20 - Slot 5	-
<b>PZ5006</b>	Bracket 20 × 20 with mounting material and ABDK	20 - Slot 5	Yes
<b>PZ5007</b>	Bracket 20 × 20 silver powder coated with mounting material and ABDK	20 - Slot 5	-
<b>PA1203</b>	Cap 20 × 20	20 - Slot 5	-