

## Natural Colour Handle Bar Profile

Handle bar profile for general use on swing and sliding doors, drawers etc.

The ergonomic profile protects the hand against injury.

The handle bar profile will give extra stability to surface elements it is attached to.

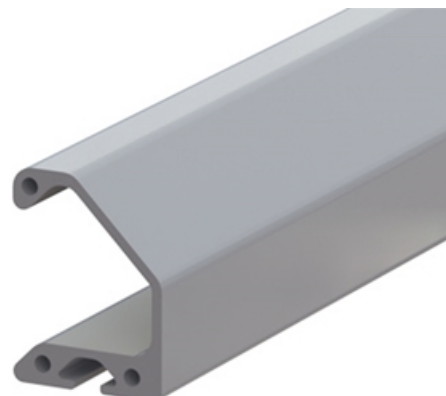
Material: Handle bar profile: Anodised aluminium; Caps:

Black plastic (PA), fibreglass reinforced

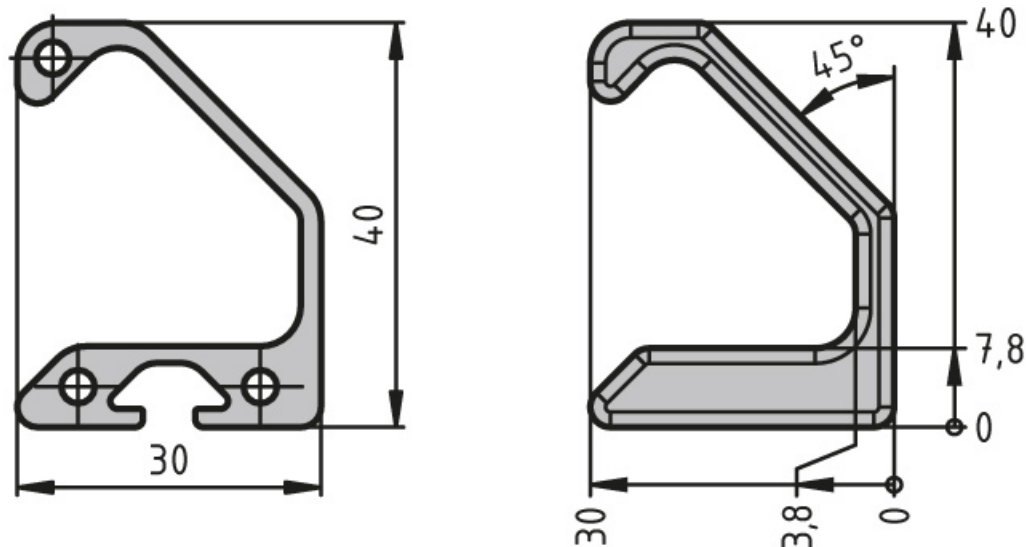
Mounting instruction: ESD-ready only if using notched slot nuts.

**System:** 40 - Slot 8; 20 - Slot 5; 30 - Slot 6

**Type:** Handles



## General Data



| Designation | Description                              | System      | ESD | Length |
|-------------|--|-------------|-----|--------|
| PP1440      | Handle bar profile                       | 20 - Slot 5 | Yes | 3000   |
| PA1055      | Set of caps for handle bars,<br>T = 4 mm | 20 - Slot 5 | -   | -      |