

Handle AL

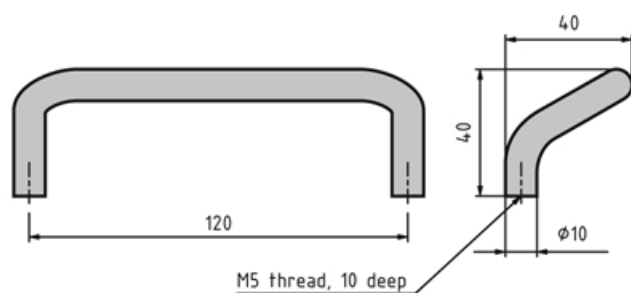
Stable aluminium handles.

Use the bent variant to minimise the risk of crushing.

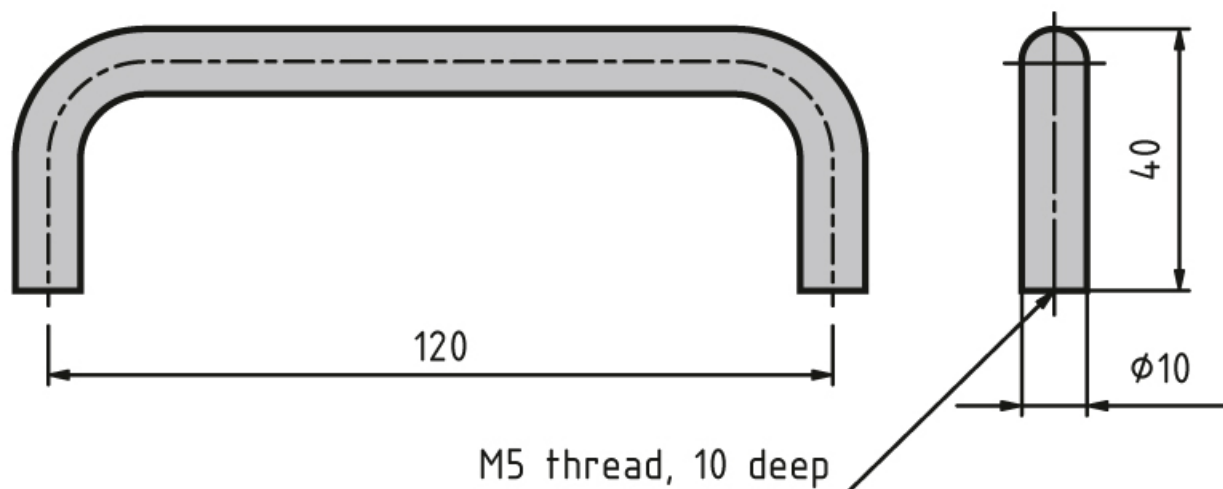
For sliding and swing doors.

System: 40 - Slot 8; 30 - Slot 6

Type: Handles



General Data



| Designation | Description |
|-------------|---|
| PZ1590 | Handle AL120 |
| PZ1595 | Handle AL120, bent |
| PZ1600 | Mounting kit for handle AL120, 2 lugs 120 GD-ZN, 2 M5 × 10 countersunk screws (DIN7991) |