

Levelling Castor

Steerable levelling castor.

Simply push the stop lever to turn the castor into a stable foot pad.

Easy to handle due to the lever's stop position.

Much ground clearance when moving.

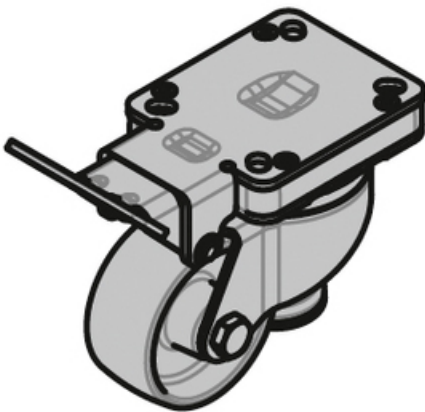
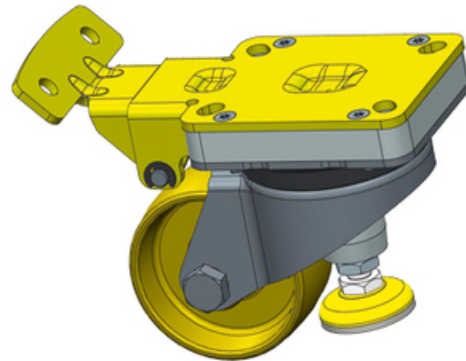
Easy foot operation by lever.

Carrying capacity: 300 kg

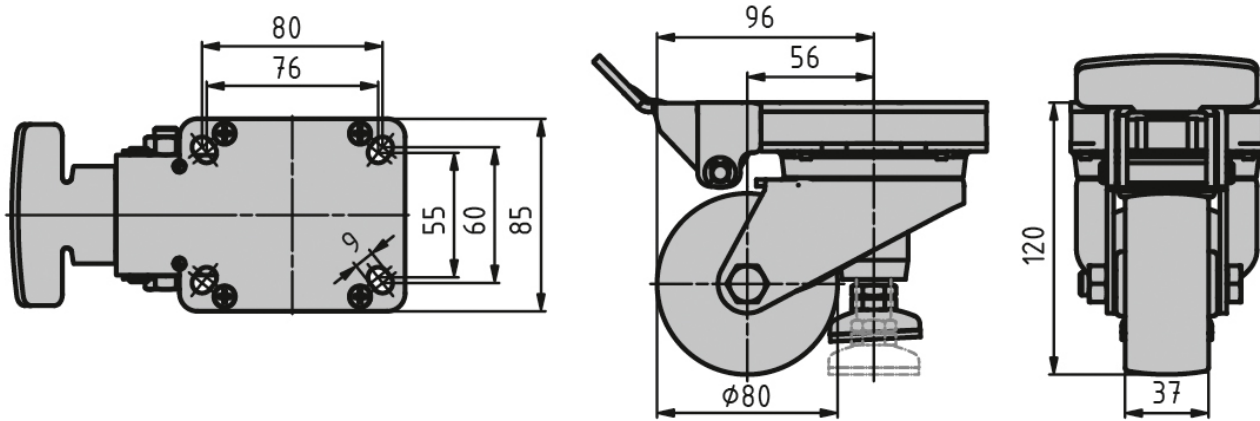
Housing: Electrolytically galvanised steel, blue passivated, free from Cr6

Wheel: PA6, natural white

System: 6; 5; 40



Variant Data



Designation	Description
PZ5234	Levelling castor with integrated locking pad, polyamide wheel