

## BF40EIK

This is a selection of BF40EIK standard conveyor sizes.  
Given speeds are based on using an MS63B-4 with the appropriate SB030 gear.

Recommended max. load 75 kg. The recommended max load is evenly spread over the entire conveyor and is in relation to a nominal width and length.

Dimensions in mm.

For other dimensions please contact Rollco.

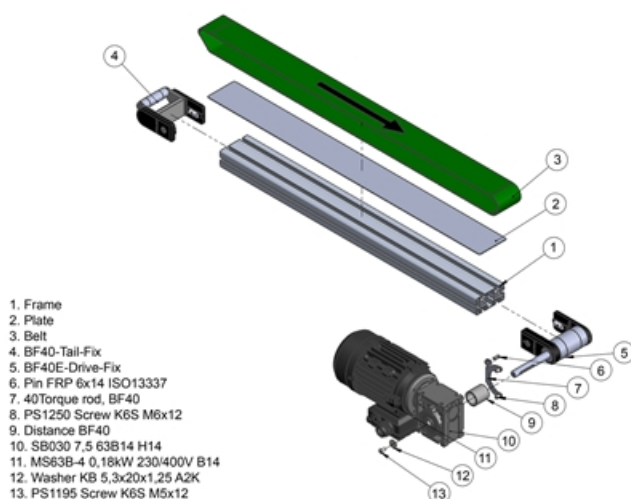
**Length (mm):** Up to 4000

**Gear ratio (I):** 5 / 7.5 / 10 / 15 / 20 / 25 / 30 / 40 / 50

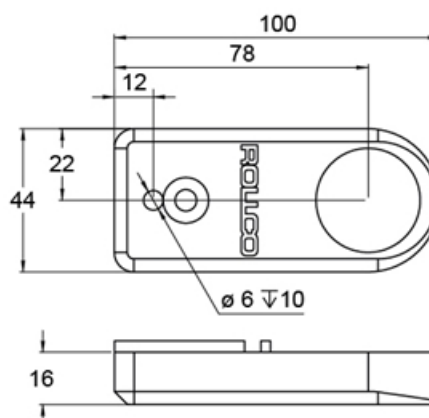
**Speed (m/min):** 37 (37.3) / 25 (24.9) / 19 (18.7) / 12 (12.4) / 9 (9.4) / 8 (7.5) / 6 (6.2) / 5 (4.7) / 4 (3.7)

**Drive side:** Right/left

**Motor Position:** Horizontal/vertical — 1-4

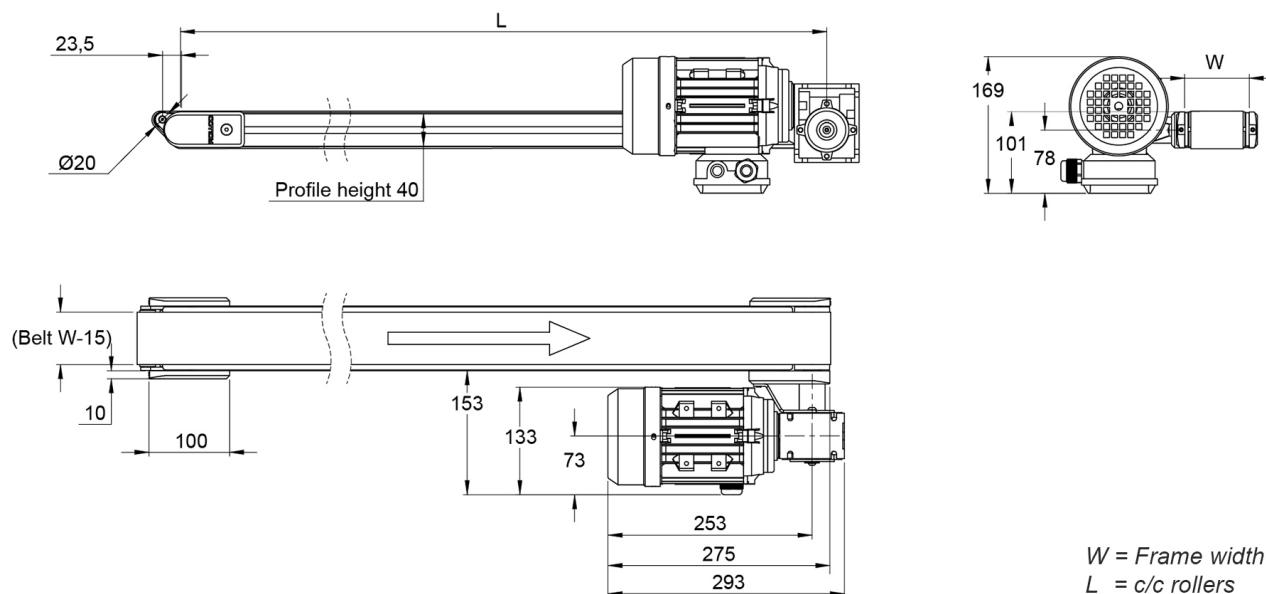


## BF40E Drive holder



| Gear ratio (I) | Speed (m/min) |
|----------------|---------------|
| 5              | 37 (37,3)     |
| 7,5            | 25 (24,9)     |
| 10             | 19 (18,7)     |
| 15             | 12 (12,4)     |
| 20             | 9 (9,4)       |
| 25             | 8 (7,5)       |
| 30             | 6 (6,2)       |
| 40             | 5 (4,7)       |
| 50             | 4 (3,7)       |

## General Data



| Designation   | Width (mm) |
|---------------|------------|
| BF40EIK - 40  | 40         |
| BF40EIK - 80  | 80         |
| BF40EIK - 120 | 120        |
| BF40EIK - 160 | 160        |
| BF40EIK - 200 | 200        |
| BF40EIK - 250 | 250        |
| BF40EIK - 300 | 300        |
| BF40EIK - 350 | 350        |
| BF40EIK - 400 | 400        |