

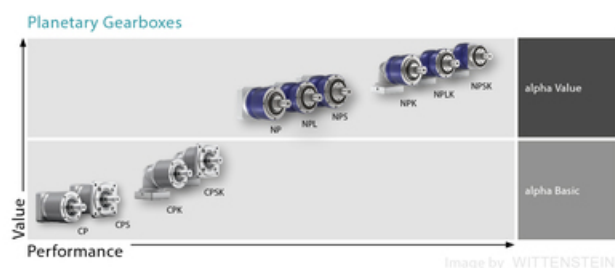
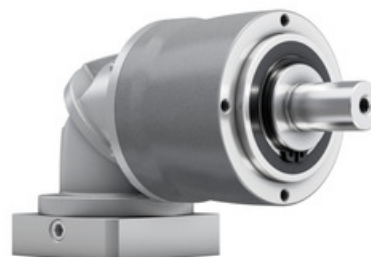
NPK bevel gearbox

Versatile right-angle planetary gearbox. Based on the NP gearbox with an additional bevel-gear input stage. Used where space-constraints does not allow an in-line assembly with the motor. With LP+ B14 output geometry. Smooth or keyed output shaft. The stated maximal backlash is kept throughout the lifetime of the gearbox. Contact Rollco for CAD-files.

Ratio: 3-100

Max. Torque (Nm): 14 - 700

Other models: food-grade lubrication



General Data

Designation	Ratio	Size
NPK005	4/5/7/8/10/16/20/25/28/35/40/50/64/70/100 (Gearbox model Standard)	005
NPK015	3/4/5/7/8/10/12/15/16/20/25/28/30/32/35/40/50/64/70/100 (Gearbox model Standard)	015
NPK025	3/4/5/7/8/9/10/12/15/16/20/25/28/30/32/35/40/50/64/70/100 (Gearbox model Standard)	025
NPK035	3/4/5/7/8/9/10/12/15/16/20/25/28/30/32/35/40/50/64/70/100 (Gearbox model Standard)	035
NPK045	5/8/10/25/32/50/64/100 (Gearbox model Standard)	045