

## SG

Dimensions in mm.

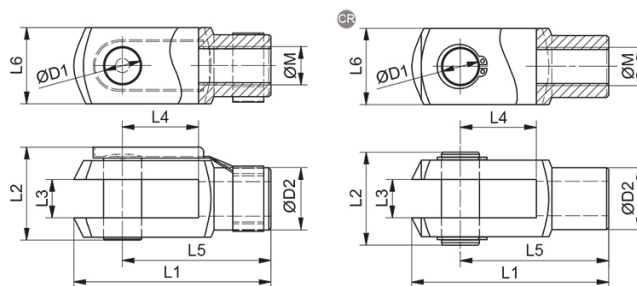
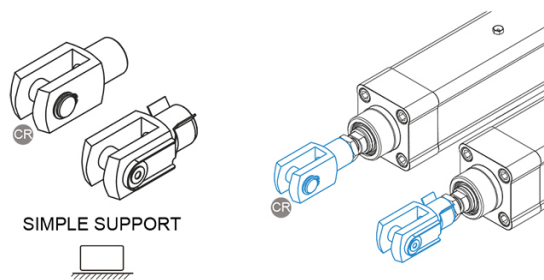
**Material:** Galvanized or stainless steel AISI 304



## Variant Data

Designation	Compatible with	Description	Material	Fmax (N)	Mass (kg)
<b>SG 32 - 9186</b>	PNCE 32	SG 32	Galvanized steel	F PNCE	0.09
<b>SG 32 CR - 69547</b>	PNCE 32	SG 32 CR	Stainless steel AISI 304	F PNCE	0.09
<b>SG 40 - 9189</b>	PNCE 40	SG 40	Galvanized steel	F PNCE	0.15
<b>SG 40 CR - 69548</b>	PNCE 40	SG 40 CR	Stainless steel AISI 304	F PNCE	0.15
<b>SG 50 - 9191</b>	PNCE 50	SG 50	Galvanized steel	F PNCE	0.33
<b>SG 50 CR - 69549</b>	PNCE 50	SG 50 CR	Stainless steel AISI 304	F PNCE	0.33
<b>SG 63 - 9191</b>	PNCE 63	SG 63	Galvanized steel	F PNCE	0.33
<b>SG 63 CR - 69549</b>	PNCE 63	SG 63 CR	Stainless steel AISI 304	F PNCE	0.33
<b>SG 80 - 9192</b>	PNCE 80	SG 80	Galvanized steel	F PNCE	0.68
<b>SG 80 CR - 70248</b>	PNCE 80	SG 80 CR	Stainless steel AISI 304	F PNCE	0.68
<b>SG 100 - 9192</b>	PNCE 100	SG 100	Galvanized steel	F PNCE	0.68
<b>SG 100 CR - 70248</b>	PNCE 100	SG 100 CR	Stainless steel AISI 304	F PNCE	0.68

## Dimensions



Designation	M	L1	L2	L3	L4	L5	L6	D1	D2
<b>SG 32 - 9186</b>	M10×1.25	52 (±0.5)	26	10 (B13)	20 (±0.5)	40	20	Ø 10 (h11)	Ø 18
<b>SG 32 CR - 69547</b>	M10×1.25	52 (±0.5)	25	10 (B13)	20 (±0.5)	40	20	Ø 10 (h11)	Ø 18
<b>SG 40 - 9189</b>	M12×1.25	62 (±0.5)	32	12 (B13)	24 (±0.5)	48	24	Ø 12 (h11)	Ø 20
<b>SG 40 CR - 69548</b>	M12×1.25	62 (±0.5)	30	12 (B13)	24 (±0.5)	48	24	Ø 12 (h11)	Ø 20
<b>SG 50 - 9191</b>	M16×1.5	83 (±0.5)	40	16 (B13)	32 (±0.5)	64	32	Ø 16 (h11)	Ø 26
<b>SG 50 CR - 69549</b>	M16×1.5	83 (±0.5)	39	16 (B13)	32 (±0.5)	64	32	Ø 16 (h11)	Ø 26
<b>SG 63 - 9191</b>	M16×1.5	83 (±0.5)	40	16 (B13)	32 (±0.5)	64	32	Ø 16 (h11)	Ø 26
<b>SG 63 CR - 69549</b>	M16×1.5	83 (±0.5)	39	16 (B13)	32 (±0.5)	64	32	Ø 16 (h11)	Ø 26
<b>SG 80 - 9192</b>	M20×1.5	105 (±0.5)	48	20 (B13)	40 (±0.5)	80	40	Ø 20 (h11)	Ø 34
<b>SG 80 CR - 70248</b>	M20×1.5	105 (±0.5)	48	20 (B13)	40 (±0.5)	80	40	Ø 20 (h11)	Ø 34
<b>SG 100 - 9192</b>	M20×1.5	105 (±0.5)	48	20 (B13)	40 (±0.5)	80	40	Ø 20 (h11)	Ø 34
<b>SG 100 CR - 70248</b>	M20×1.5	105 (±0.5)	48	20 (B13)	40 (±0.5)	80	40	Ø 20 (h11)	Ø 34