

## XTR---.0200

- Up to 60% higher load capacity
- Extra sustainable
- Extra exact
- Extra strong
- Extra long-lasting

Use profile XUP---.0700

Fixing square element BQ---.1000

Rectangular fixing element BR---.1100

Note! System Load Capacity refers to capacity of both rail and bearing. Dynamic Load Capacity refers to bearing.

Dimensions in mm.

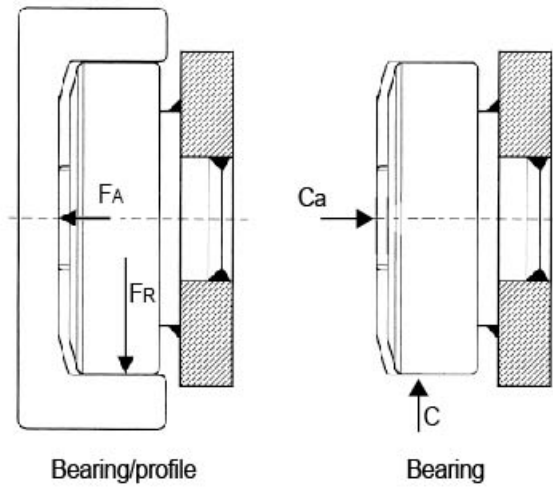
**Roller Type:** Heavy

**Sizes Available:** 60; 70; 80; 90; 110; 120; 150



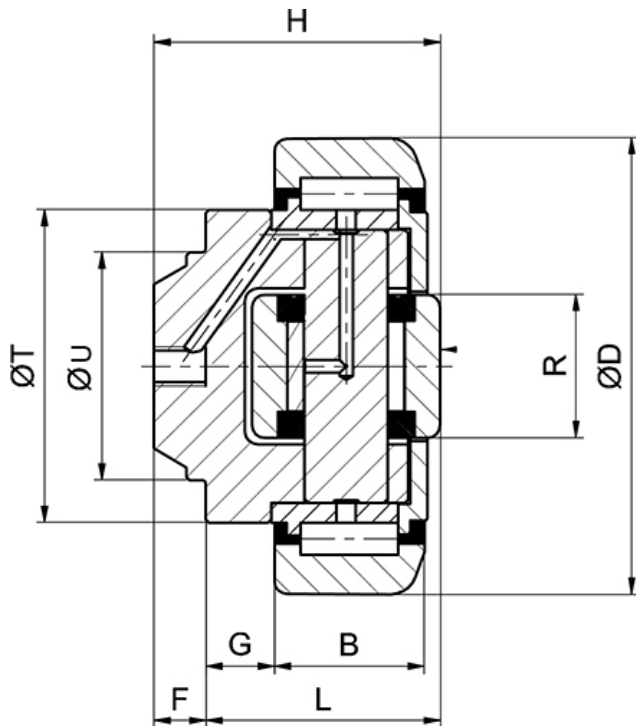
## General Data

FA = System Load Capacity Axial  
 FR = System Load Capacity Radial  
 Ca = Dynamic Load Capacity Axial  
 C = Dynamic Load Capacity Radial



Designation	System Load Capacity Radial (N)	System Load Capacity Axial (N)	Dynamic Load Capacity Axial (N)	Dynamic Load Capacity Radial (N)	Profile
XTR060.0200	15390	3800	11000	31000	XUP---.0700
XTR070.0200	16430	4100	13000	45500	XUP---.0700
XTR080.0200	18210	6500	18000	48000	XUP---.0700
XTR090.0200	31680	6600	23000	68000	XUP---.0700
XTR110.0200	34850	11500	31000	81000	XUP---.0700
XTR120.0200	47430	12700	43000	110000	XUP---.0700
XTR150.0200	82190	22600	68000	151000	XUP---.0700

## Dimensions



Designation	B	D	F	G	H	L	R	T	U
XTR060.0200	20	65.5	7	9	37.5	30.5	20	42	30
XTR070.0200	23	73.8	8	10.5	44	36	22	48	35
XTR080.0200	23	81.7	11.5	10.5	48	36.5	24	54	40
XTR090.0200	30	92.4	13	10.5	57	44	26	59	45
XTR110.0200	31	111.4	14	20	69	55	34	71	60
XTR120.0200	37	126.8	16.3	14	72.3	56	40	80	60
XTR150.0200	45	153.1	20	8.5	78.5	58.5	50	103	60