

## T-Rail

Fixed rails used as the main load bearing in radial and axial forces.

The rails are available in 4 different sizes: 18, 28, 43, 63 mm.

Longer single rails up to max. 4080 mm on request. For longer rail systems, see section "Joined rails" in Technical Information.

Dimensions in mm.

D1 Fixing holes for Torx® screws with low head (custom design) included in scope of supply.

D2 Fixing holes for countersunk head screws according to DIN 7991.

**Max. operating speed (m/s):** 9 (depending on application)

**Max. acceleration (m/s<sup>2</sup>):** 20 (depending on application)

**Max. radial load capacity (N):** 15,000 (per slider)

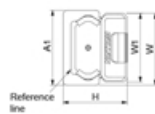
**Temperature range (°C):** -20 to +120

**Material:** Size 18, cold-drawn roller bearing carbon steel C43 F. Sizes 28-63 Cf53. Zinc-plated according to ISO 2081.

Rail raceways are induction hardened and ground

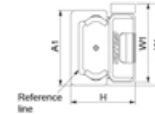


T-rail with NSW slider



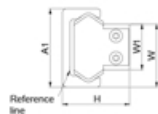
Configuration	Size	A1 (mm)	H (mm)	W1 (mm)	W (mm)
TL_ / NSW	18	18 (+0.2/-0.10)	16.5 (±0.15)	16 (0/-0.2)	17 (+0.1/-0.3)
TL_ / NSW	28	28 (+0.2/-0.10)	23.9 (±0.15)	24.9 (0/-0.2)	26.45 (+0.1/-0.3)
TL_ / NSW	43	43 (+0.3/-0.10)	37 (±0.15)	39.5 (0/-0.2)	41.25 (+0.2/-0.4)
TL_ / NSW	63	63 (+0.3/-0.10)	50.5 (±0.15)	60 (0/-0.2)	61.5 (+0.2/-0.4)

T-rail with NSD slider



Configuration	Size	A1 (mm)	H (mm)	W1 (mm)	W (mm)
TL_ / NSD	28	28 (+0.2/-0.10)	23.9 (±0.15)	24.9 (0/-0.2)	32 (+0.1/-0.3)
TL_ / NSD	43	43 (+0.3/-0.10)	37 (±0.15)	39.5 (0/-0.2)	47 (+0.2/-0.4)

T-rail with CS slider



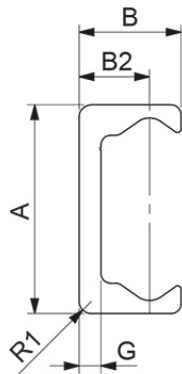
Configuration	Size	A1 (mm)	H (mm)	W1 (mm)	W (mm)
TL_ / CSW	18	18 (+0.25/-0.10)	15 (+0.15/-0.15)	9.5 (0/-0.05)	14 (+0.05/-0.25)
TL_ / CSW	28	28 (+0.25/-0.10)	23.9 (+0.15/-0.15)	14.9 (0/-0.10)	21.7 (+0.05/-0.35)
TL_ / CSW	43	43 (+0.35/-0.10)	37 (+0.15/-0.15)	24.9 (0/-0.15)	34.3 (+0.10/-0.30)
TL_ / CSW	63	63 (+0.35/-0.10)	49.8 (+0.15/-0.15)	39.5 (+0.15/0)	51.6 (+0.15/-0.30)

## Variant Data

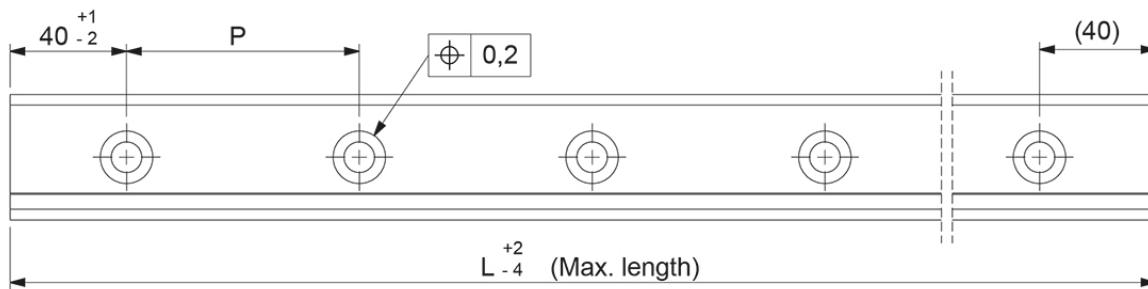
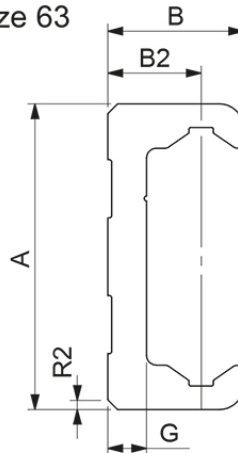
Designation	Size	Weight Rail (kg/m)
TLC18	18	0.55
TLV18	18	0.55
TLC28	28	1.0
TLV28	28	1.0
TLC43	43	2.6
TLV43	43	2.6
TLC63	63	6.0
TLV63	63	6.0

## Dimensions

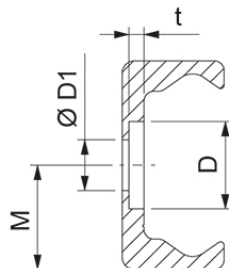
Size 18-43



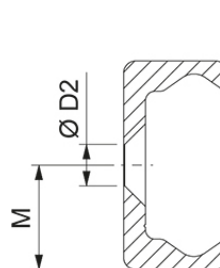
Size 63



Rail with counterbored holes



Rail with countersunk holes



Designation	M	A	B	B2	R1	R2	L	D	D1
TLC18	9	18	8.25	5.75	1.5	-	2000	9.5	M4
TLV18	9	18	8.25	5.75	1.5	-	2000	9.5	M4

## Dimensions

Designation	M	A	B	B2	R1	R2	L	D	D1
TLC28	14	28	12.25	8.5	1	-	3200	11	M5
TLV28	14	28	12.25	8.5	1	-	3200	11	M5
TLC43	21.5	43	21	14.5	2.5	-	4080	18	M8
TLV43	21.5	43	21	14.5	2.5	-	4080	18	M8
TLC63	31.5	63	28	19.25	-	2x45°	4080	15	M8
TLV63	31.5	63	28	19.25	-	2x45°	4080	15	M8

Designation	D2	t	G	P	Min. length
TLC18	M4	2	2.8	80	160
TLV18	M4	2	2.8	80	160
TLC28	M5	2	3	80	240
TLV28	M5	2	3	80	240
TLC43	M8	3.1	4.5	80	400
TLV43	M8	3.1	4.5	80	400
TLC63	M10	5.2	8	80	560
TLV63	M10	5.2	8	80	560