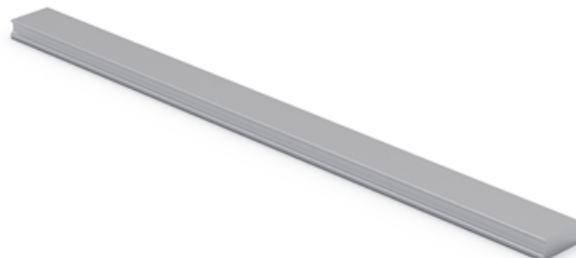


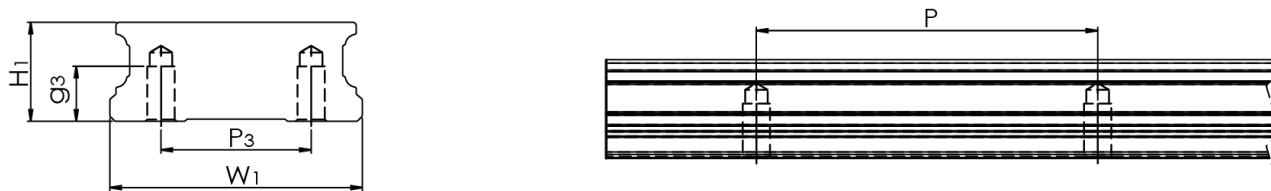
WRU Rail

Tapped from the bottom.
Cut to length acc. to request.
Rails can be joint together for extra long lengths.
Contact Rollco for more information.

Dimensions in mm.



Product Data



Designation	H1	W1	Hole Pitch (P)	Mxg3	Length
WRU21/15	14.4	37	50	M4x8	4000
WRU27/20	18.5	42	60	M5x7.5	4000

Designation	P3	Weight Rail (g/m)
WRU21/15	22	3596
WRU27/20	24	5259