

SBI-SLL

Long standard block without flange. Side nipple, dustproof end seal and self-lubricant container end seal as option.

* S: Bolt size for bottom mounting type of block

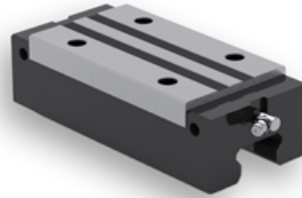
All blocks and rails are also available in Raydent treated material:

- Corrosion resistant
- Patented black surface
- Balls of stainless steel available as option

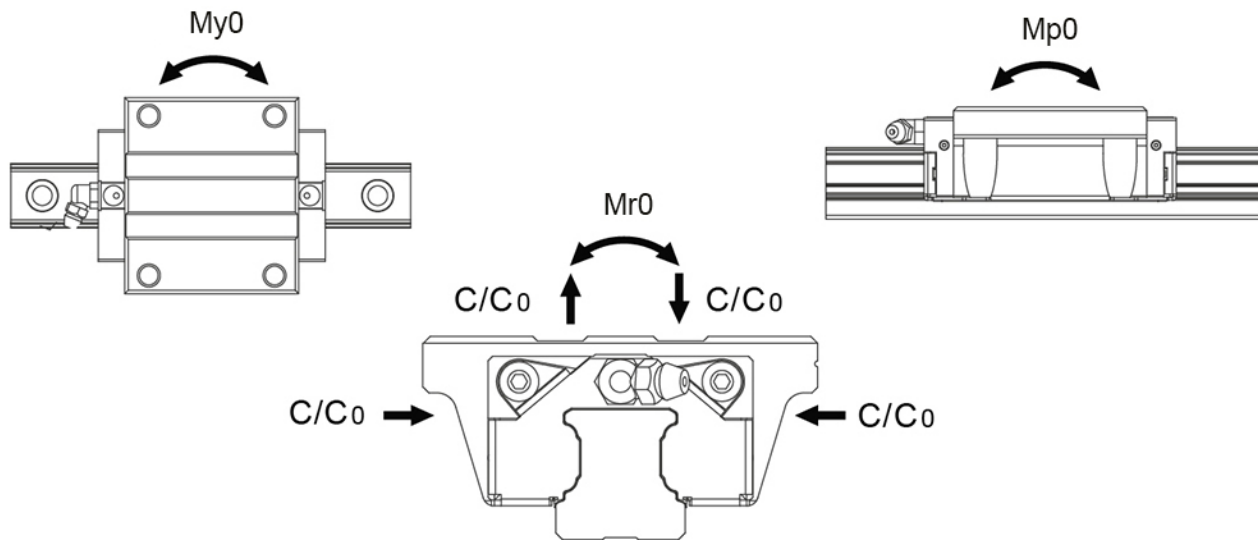
Please contact Rollco for more information.

Dimensions in mm.

Lead times in the table below are only indications. Choice of preload and other options will affect lead time. Please contact us for exact delivery time for your request.



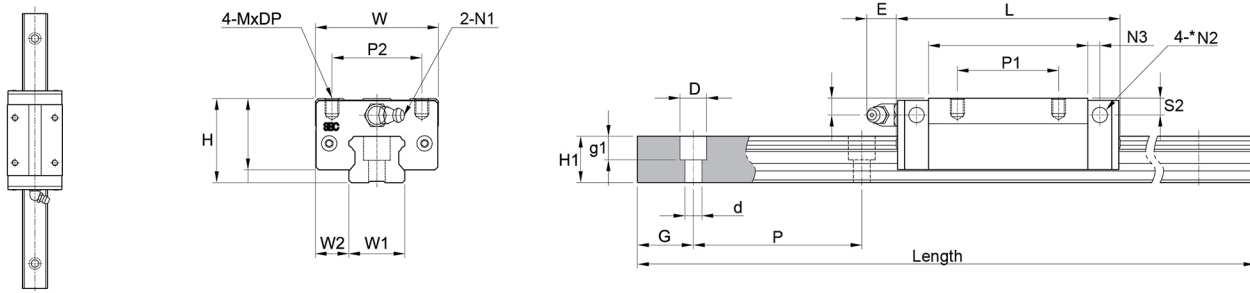
Load and Weight



Designation	Dynamic Load Capacity C (N)	Static Load Capacity C0 (N)	Static Moment Mr0 (Nm)	Static Moment Mp0 (Nm)	Static Moment My0 (Nm)
SBI15SLL	17100	31700	210	290	290
SBI20SLL	27900	50000	470	560	560
SBI25SLL	36700	64400	690	840	840
SBI30SLL	51300	84700	1100	1300	1300
SBI35SLL	71300	115300	1830	2120	2120
SBI45SLL	94800	150500	3210	3140	3140
SBI55SLL	147900	224500	5950	4780	4780
SBI65SLL	232500	354100	11150	9860	9860

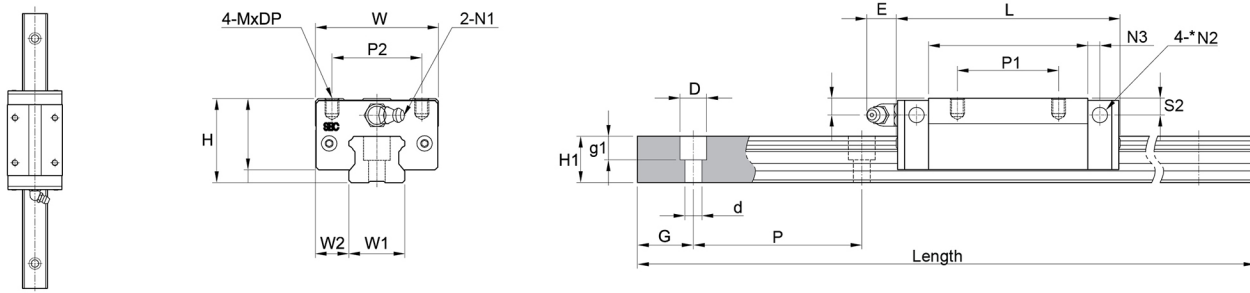
Designation	Dynamic Moment Mr (Nm)	Dynamic Moment Mp (Nm)	Dynamic Moment My (Nm)	Weight Block (g)	Weight Rail (g/m)
SBI15SLL	113	156	156	260	1300
SBI20SLL	262	312	312	540	2200
SBI25SLL	393	479	479	850	3000
SBI30SLL	666	787	787	1370	4250
SBI35SLL	1132	1311	1311	2040	6020
SBI45SLL	2022	1978	1978	3690	9770
SBI55SLL	3920	3149	3149	5820	13720
SBI65SLL	7321	6474	6474	11980	23170

System Dimensions



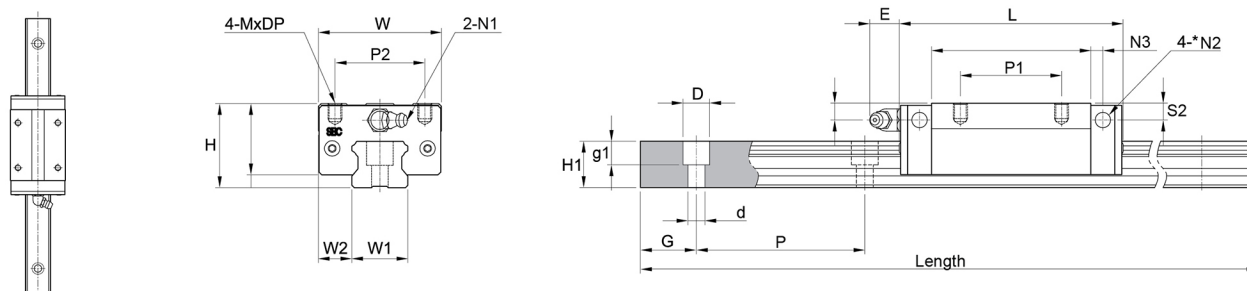
Designation	System Height (H)	System Width (W)	Block Length (L)	W2
SBI15SLL	28	34	79.4	9.5
SBI20SLL	30	44	96.4	12
SBI25SLL	40	48	108	12.5
SBI30SLL	45	60	131.6	16
SBI35SLL	55	70	152.6	18
SBI45SLL	70	86	174	20.5
SBI55SLL	80	100	211.8	23.5
SBI65SLL	90	126	272.2	31.5

Mounting block hole



Designation	P2	P1
SBI15SLL	26	34
SBI20SLL	32	50
SBI25SLL	35	50
SBI30SLL	40	60
SBI35SLL	50	72
SBI45SLL	60	80
SBI55SLL	75	95
SBI65SLL	76	120

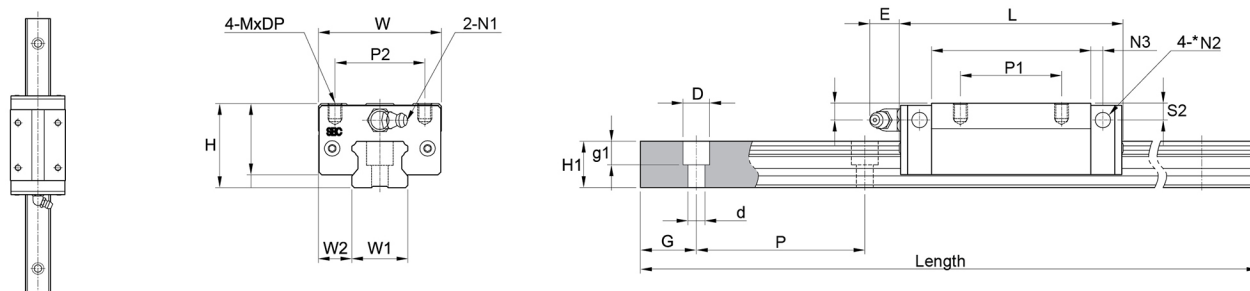
Rail Dimensions



Designation	W1	H1	P	D x d x g1	Length
SBI15SLL	15	13	60	7.5 x 4.5 x 5.5	3000
SBI20SLL	20	16.5	60	9.5 x 6 x 8.5	4000
SBI25SLL	23	20	60	11 x 7 x 9	4000
SBI30SLL	28	23	80	14 x 9 x 12	4000
SBI35SLL	34	26	80	14 x 9 x 12	4000
SBI45SLL	45	32	105	20 x 14 x 17	4000
SBI55SLL	53	38	120	23 x 16 x 20	4000
SBI65SLL	63	53	150	26 x 18 x 22	4000

Designation	Hole Pitch (P)
SBI15SLL	60
SBI20SLL	60
SBI25SLL	60
SBI30SLL	80
SBI35SLL	80
SBI45SLL	105
SBI55SLL	120
SBI65SLL	150

Block Dimensions



Designation	Block Length (L)	System Width (W)	L1	h2	W2
SBI15SLL	79.4	34	60.8	25	9.5
SBI20SLL	96.4	44	74.4	25.4	12
SBI25SLL	108	48	86	34.5	12.5
SBI30SLL	131.6	60	103.6	38	16
SBI35SLL	152.6	70	122.6	47.5	18
SBI45SLL	174	86	140	61	20.5
SBI55SLL	211.8	100	170.4	58	23.5
SBI65SLL	272.2	126	222.8	71	31.5

Designation	S1	E	S2	N3	N1	N2
SBI15SLL	8.5	5.5	7.8	3.8	M4x0.7	Ø 3.5
SBI20SLL	6	12	5.8	5	M6x0.75	Ø 3.5
SBI25SLL	10	12	9	5	M6x0.75	Ø 3.5
SBI30SLL	11.5	12	10.8	5	M6x0.75	Ø 5.7
SBI35SLL	15	12	15	6	M6x0.75	Ø 5.7
SBI45SLL	20.5	13.5	19.3	6.5	PT1/8	Ø 5.7
SBI55SLL	22	13	22	8	PT1/8	Ø 8.7
SBI65SLL	14	13	14	10	PT1/8	Ø 8.7

Designation	MxDP	H1
SBI15SLL	M4x5	13
SBI20SLL	M5x5	16.5
SBI25SLL	M6x8	20
SBI30SLL	M8x10	23
SBI35SLL	M8x10	26
SBI45SLL	M10x13	32
SBI55SLL	M12x18	38
SBI65SLL	M16x16	53