

## Clevis foot mounting MLBU

Dimensions in mm.

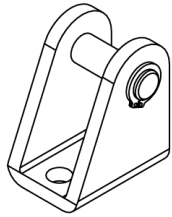
**Material:** Galvanized steel



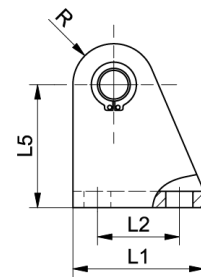
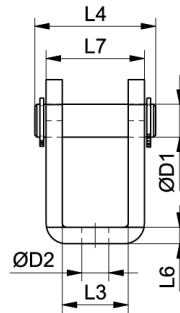
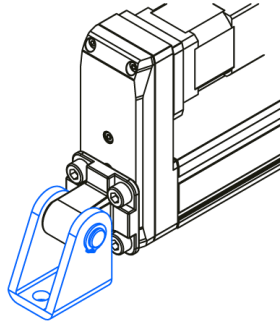
## General Data

Designation	Description	Compatible with	Material	Fmax (N)	Mass (kg)
MLBU 25 - 108227	-	MCE 25	Galvanized steel	F MCE	0.04
MLBU 32 - 108226	MLBU 32	MCE 32	Galvanized steel	F MCE	0.08

## Dimensions



Simple support



Designation	L1	L2	L3	L4	L5	L6	L7	D1	D2
MLBU 25 - 108227	25	15	12.1	23.0 (+0.3/0)	27 (±0.5)	3 (±0.5)	18	6 (f7)	5.5
MLBU 32 - 108226	32	20	16.1	29.5 (+0.3/0)	30 (±0.5)	4 (±0.5)	24	8 (f7)	6.6

Designation	R
MLBU 25 - 108227	7
MLBU 32 - 108226	10