

## KH

Dimensions in mm.  
Other types available on request.

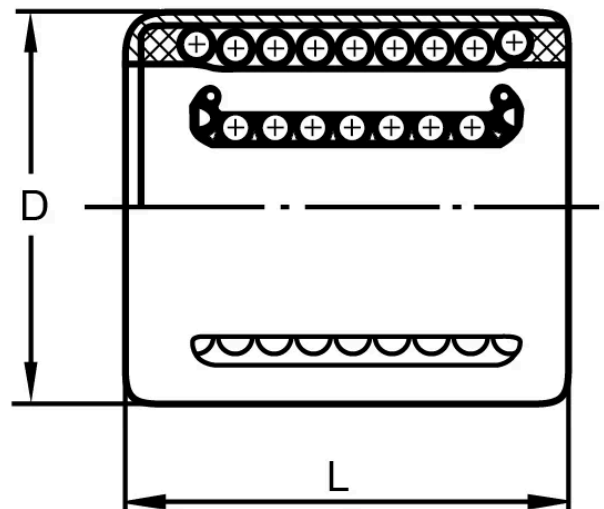
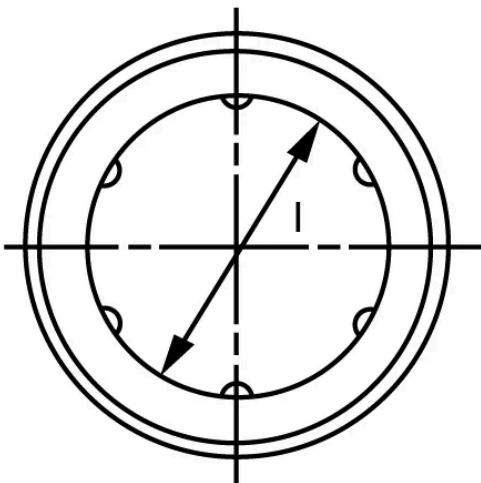
**Material:** N/A



## General Data

| Designation | Dynamic Load Capacity (N) | Static Load Capacity (N) |
|-------------|---------------------------|--------------------------|
| KH0622PP    | 400                       | 239                      |
| KH0824PP    | 435                       | 280                      |
| KH1026PP    | 500                       | 370                      |
| KH1228PP    | 620                       | 510                      |
| KH1428PP    | 620                       | 520                      |
| KH1630PP    | 800                       | 620                      |
| KH2030PP    | 950                       | 790                      |
| KH2540PP    | 1990                      | 1670                     |
| KH3050PP    | 2800                      | 2700                     |
| KH4060PP    | 4400                      | 4450                     |
| KH5070PP    | 5500                      | 6300                     |

## Dimensions



| Designation | l  | D  | L  | External Seals |
|-------------|----|----|----|----------------|
| KH0622PP    | 6  | 12 | 22 | -              |
| KH0824PP    | 8  | 15 | 24 | -              |
| KH1026PP    | 10 | 17 | 26 | -              |
| KH1228PP    | 12 | 19 | 28 | G 12 x 19 x 3  |
| KH1428PP    | 14 | 21 | 28 | G 14 x 21 x 3  |
| KH1630PP    | 16 | 24 | 30 | G 16 x 24 x 3  |
| KH2030PP    | 20 | 28 | 30 | G 20 x 28 x 4  |
| KH2540PP    | 25 | 35 | 40 | G 25 x 35 x 4  |
| KH3050PP    | 30 | 40 | 50 | G 30 x 40 x 4  |
| KH4060PP    | 40 | 52 | 60 | G 40 x 52 x 5  |
| KH5070PP    | 50 | 62 | 70 | -              |