

## BR---.1100

- The fixing element is welded with the respective combined roller
- Special dimensions on request.

\* For L measurement, see respective roller.

Order example: Roller + fixing element TR070.0200/BR  
1100

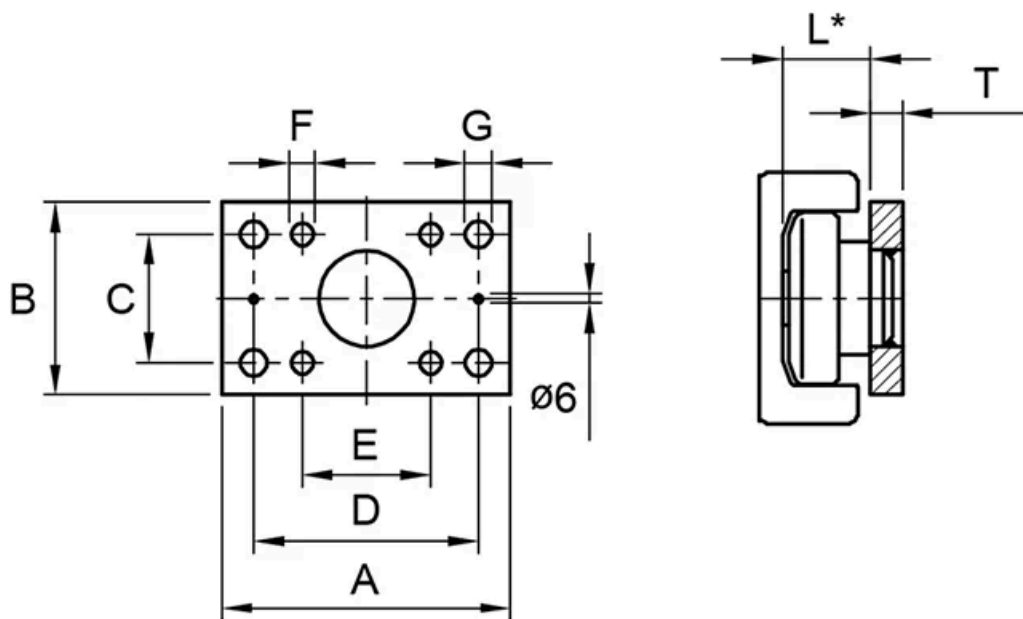
Roller, combined, fixed, Ø 70,1 mm - welded with mounting  
plate 120 x 80 x 15 mm

Dimensions in mm.





## Dimensions



Designation	Remark	G	A	B	D	F	C	T	E
50-BR1100	Roller: TR050.---, Plate: BR1100, Distance sheet: BR050.1505, BR050.1510	10.5	100	60	80	M10	40	10	40
60-BR1100	Roller: TR060.--- / XTR060.---, Plate: BR1100, Distance sheet: BR060.1505, BR060.1510	10.5	100	60	80	M10	40	10	40
70-BR1100	Roller: TR070.--- / XTR070.---, Plate: BR1100, Distance sheet: BR070.1505, BR070.1510	13	120	80	90	M12	50	15	50
80-BR1100	Roller: TR080.--- / XTR080.---, Plate: BR1100, Distance sheet: BR080.1505, BR080.1510	13	120	80	90	M12	50	15	50
90--BR1100	Roller: TR090.--- / XTR090.---, Plate: BR1100, Distance sheet: BR090.1505, BR090.1510	17	160	100	120	M16	60	20	60
110-BR1100	Roller: TR110.--- / XTR110.---, Plate: BR1100, Distance sheet: BR110.1505, BR110.1510	17	180	120	140	M16	80	20	80
120-BR1100	Roller: TR120.--- / XTR120.---, Plate: BR1100, Distance sheet: BR120.1505, BR120.1510	17	180	120	140	M16	80	20	80

Designation	Remark	G	A	B	D	F	C	T	E
<b>150-BR1100</b>	Roller: TR150.--- / XTR150.---, Plate: BR1100, Distance sheet: BR150.1505, BR150.1510	17	200	150	160	M16	100	20	100