

## XSTR---.6200

- Axial roller with 35% higher load capacity.
- Extra sustainable
- Extra exact
- Extra strong
- Extra long-lasting
- Special dimensions on request

Use profile XUP---.0700

Order example: XSTR080.6200  
Heavy roller XSTR080.6200

Dimensions in mm.

**Roller Type:** Heavy

**Sizes Available:** 60; 70; 80; 90; 110; 120; 150





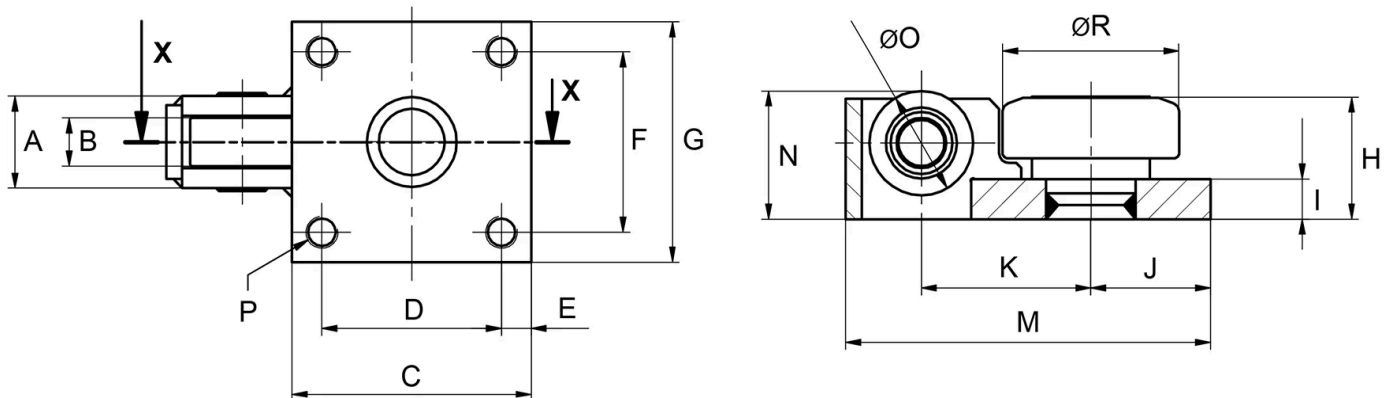
## General Data

FA = System Load Capacity Axial  
 FR = System Load Capacity Radial  
 Ca = Dynamic Load Capacity Axial  
 C = Dynamic Load Capacity Radial



| Designation  | System Load Capacity Radial (N) | System Load Capacity Axial (N) | Profile     |
|--------------|---------------------------------|--------------------------------|-------------|
| XSTR060.6200 | 15390                           | 9000                           | XUP---.0700 |
| XSTR070.6200 | 16430                           | 14000                          | XUP---.0700 |
| XSTR080.6200 | 18210                           | 14000                          | XUP---.0700 |
| XSTR090.6200 | 31680                           | 17000                          | XUP---.0700 |
| XSTR110.6200 | 34850                           | 27000                          | XUP---.0700 |
| XSTR120.6200 | 47430                           | 27000                          | XUP---.0700 |
| XSTR150.6200 | 82190                           | 27000                          | XUP---.0700 |

## Dimensions



| Designation  | A  | B  | C   | D   | E  | F   | G   | H    | I  |
|--------------|----|----|-----|-----|----|-----|-----|------|----|
| XSTR060.6200 | 38 | 20 | 70  | 50  | 10 | 50  | 70  | 41.5 | 12 |
| XSTR070.6200 | 42 | 24 | 80  | 60  | 10 | 60  | 80  | 49   | 15 |
| XSTR080.6200 | 46 | 24 | 100 | 70  | 15 | 70  | 100 | 48.5 | 15 |
| XSTR090.6200 | 46 | 24 | 120 | 90  | 15 | 90  | 120 | 61   | 20 |
| XSTR110.6200 | 54 | 28 | 140 | 100 | 20 | 100 | 140 | 71.5 | 20 |
| XSTR120.6200 | 54 | 28 | 140 | 100 | 20 | 100 | 140 | 71.5 | 20 |
| XSTR150.6200 | 54 | 28 | 160 | 120 | 20 | 120 | 160 | 79   | 25 |

| Designation  | J  | K   | M   | N    | O    | P       | R       |
|--------------|----|-----|-----|------|------|---------|---------|
| XSTR060.6200 | 35 | 55  | 118 | 42.5 | Ø 40 | 4 x M10 | Ø 65.5  |
| XSTR070.6200 | 40 | 65  | 137 | 51   | Ø 47 | 4 x M12 | Ø 73.8  |
| XSTR080.6200 | 50 | 75  | 157 | 51.5 | Ø 47 | 4 x M12 | Ø 81.7  |
| XSTR090.6200 | 60 | 85  | 183 | 64   | Ø 52 | 4 x M16 | Ø 92.4  |
| XSTR110.6200 | 70 | 105 | 223 | 75   | Ø 72 | 4 x M16 | Ø 111.4 |
| XSTR120.6200 | 70 | 107 | 225 | 76   | Ø 72 | 4 x M16 | Ø 126.8 |
| XSTR150.6200 | 80 | 80  | 248 | 83.5 | Ø 72 | 4 x M16 | Ø 153.1 |