

## TR---.0200

- Lubricated for lifetime
- Optional from size 60 relubricable.

Use profile UP---.0700. Profile UP---.0730 for TR050.0200

Fixing square element BQ---.1000

Rectangular fixing element BR---.1100

C = Dynamic load capacity radial bearing

Ca = Static load capacity axial bearing

Note! System Load Capacity refers to capacity of both rail and bearing. Dynamic Load Capacity refers to bearing. Dimensions in mm.

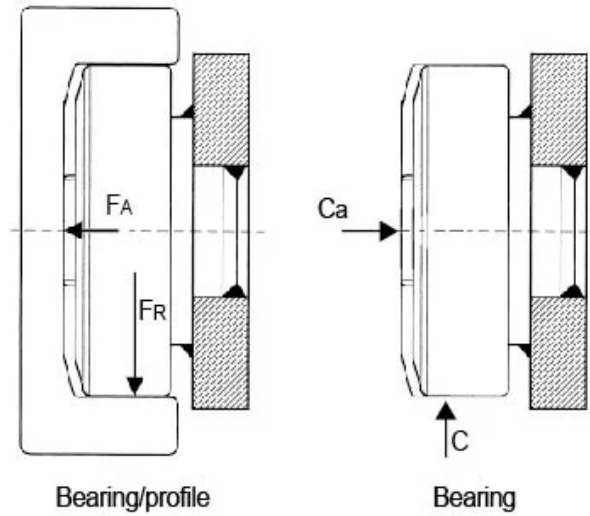
**Roller Type:** Standard

**Sizes Available:** 50; 60; 70; 80; 90; 110; 120; 150; 180



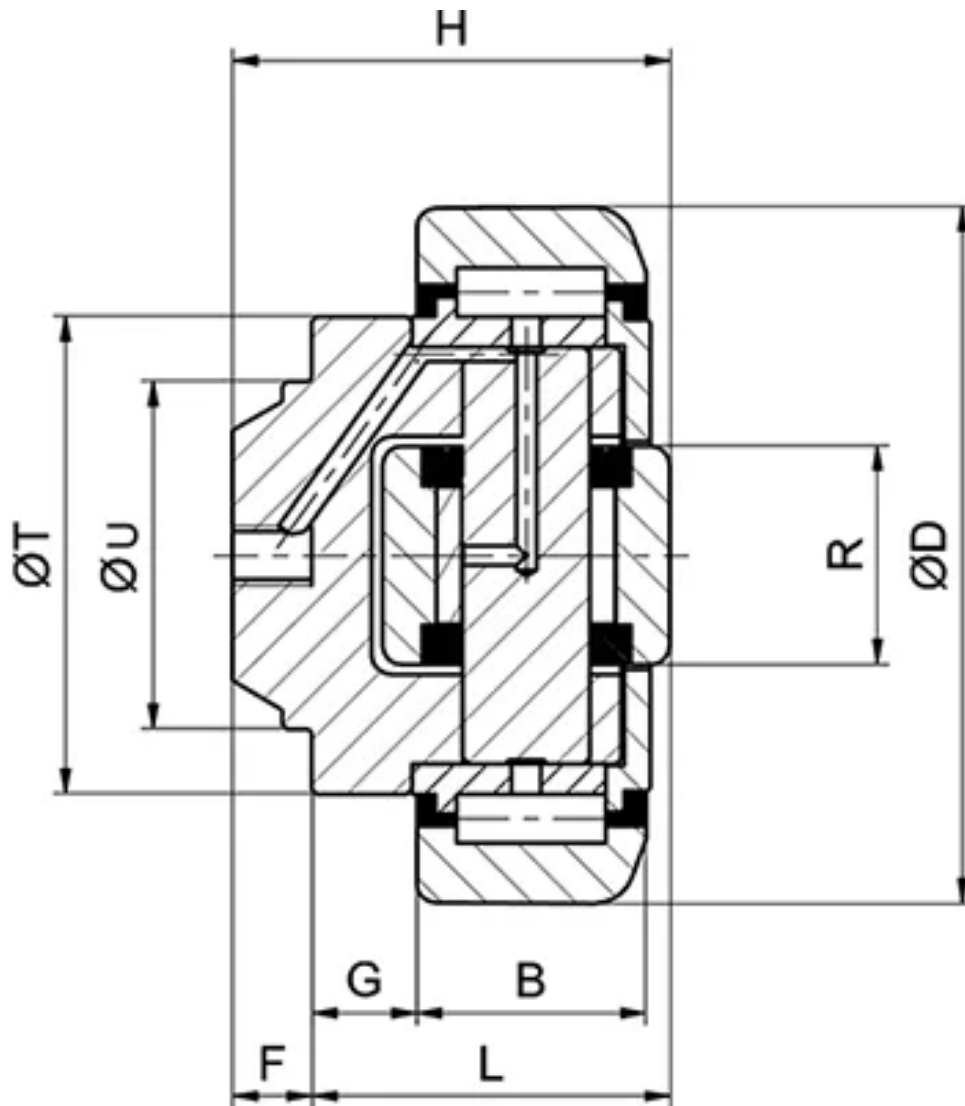
## General Data

FA = System Load Capacity Axial  
 FR = System Load Capacity Radial  
 Ca = Dynamic Load Capacity Axial  
 C = Dynamic Load Capacity Radial



| Designation | System Load Capacity Radial (N) | System Load Capacity Axial (N) | Dynamic Load Capacity Axial (N) | Dynamic Load Capacity Radial (N) | Profile    |
|-------------|---------------------------------|--------------------------------|---------------------------------|----------------------------------|------------|
| TR050.0200  | 5300                            | 2000                           | 7500                            | 24500                            | UP---.0730 |
| TR060.0200  | 8870                            | 2950                           | 11000                           | 31000                            | UP---.0700 |
| TR070.0200  | 11400                           | 3150                           | 13000                           | 45500                            | UP---.0700 |
| TR080.0200  | 12870                           | 5000                           | 18000                           | 48000                            | UP---.0700 |
| TR090.0200  | 20370                           | 5100                           | 23000                           | 68000                            | UP---.0700 |
| TR110.0200  | 24060                           | 8900                           | 31000                           | 81000                            | UP---.0700 |
| TR120.0200  | 33440                           | 9800                           | 43000                           | 110000                           | UP---.0700 |
| TR150.0200  | 51940                           | 17400                          | 68000                           | 151000                           | UP---.0700 |
| TR180.0200  | 76000                           | 23000                          | 73000                           | 207000                           | UP---.0700 |

## Dimensions



| Designation | B    | D     | F    | G    | H    | L    | R  | T   | U   |
|-------------|------|-------|------|------|------|------|----|-----|-----|
| TR050.0200  | 17   | 52.5  | 6    | 5    | 33   | 27   | 16 | 40  | 30  |
| TR060.0200  | 20   | 62.5  | 7    | 9    | 37.5 | 30.5 | 20 | 42  | 30  |
| TR070.0200  | 23   | 70.1  | 8    | 10.5 | 44   | 36   | 22 | 48  | 35  |
| TR080.0200  | 23   | 77.7  | 11.5 | 10.5 | 48   | 36.5 | 24 | 54  | 40  |
| TR090.0200  | 30   | 88.4  | 13   | 10.5 | 57   | 44   | 26 | 59  | 45  |
| TR110.0200  | 31   | 107.7 | 14   | 20   | 69   | 55   | 34 | 71  | 60  |
| TR120.0200  | 37   | 123   | 16.3 | 14   | 72.3 | 56   | 40 | 80  | 60  |
| TR150.0200  | 45   | 149   | 20   | 8.5  | 78.5 | 58.5 | 50 | 103 | 60  |
| TR180.0200  | 57.3 | 180   | 19.4 | 12.5 | 95.7 | 76.3 | 60 | 124 | 100 |