

## PAS ---.0200

- Polyamide roller combined – fixed
- Lubricated for lifetime
- High abrasion resistance
- Low friction
- High chemical resistance to alcohol, salts, greases and certain acids and alkalis in diluted concentration.

Reduction of value by speed of:

- 1 m/sec: 0%
- 2 m/sec: -20%
- 3 m/sec: -30%

Use profile UP---.0730. See Fixing element rectangular and square.

Order example: Roller + fixing plate PAS040.0360/BQ1000  
Roller Ø 40 mm - welded with mounting element 50 mm x 50 mm x 8 mm

Dimensions in mm.

**Temperature:** Maximum working temperature 80° C

**Speed:** Travel speed up to 5 m/sec

**Roller Type:** Polyamide

**Sizes Available:** 100; 125





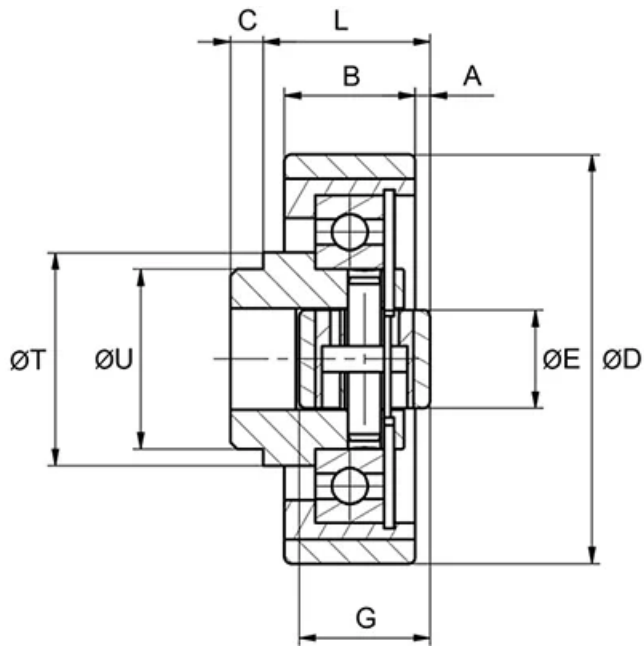
## General Data

FA = System Load Capacity Axial  
 FR = System Load Capacity Radial  
 Ca = Dynamic Load Capacity Axial  
 C = Dynamic Load Capacity Radial



| Designation | System Load Capacity Radial (N) | System Load Capacity Axial (N) |
|-------------|---------------------------------|--------------------------------|
| PAS100.0200 | 2500                            | 900                            |
| PAS125.0200 | 6000                            | 1300                           |

## Dimensions



| Designation | A   | B  | C  | D     | E  | G  | L  | T  | U  |
|-------------|-----|----|----|-------|----|----|----|----|----|
| PAS100.0200 | 6.5 | 25 | 8  | 101.2 | 15 | 40 | 41 | 51 | 45 |
| PAS125.0200 | 4.5 | 40 | 10 | 125   | 30 | 40 | 51 | 65 | 55 |