

## Adapter Plate for MK & MKS Clamping Elements

Because of the height difference of different rail guide blocks and to ensure the proper function of the MK and MKS Clamping Elements, the use of adapter plates is sometimes needed. See "Selection of Clamping Elements" for individual block types and whether an adapter plate is needed.

Compatible with Linear Rail HRC/ARC/ERC only.

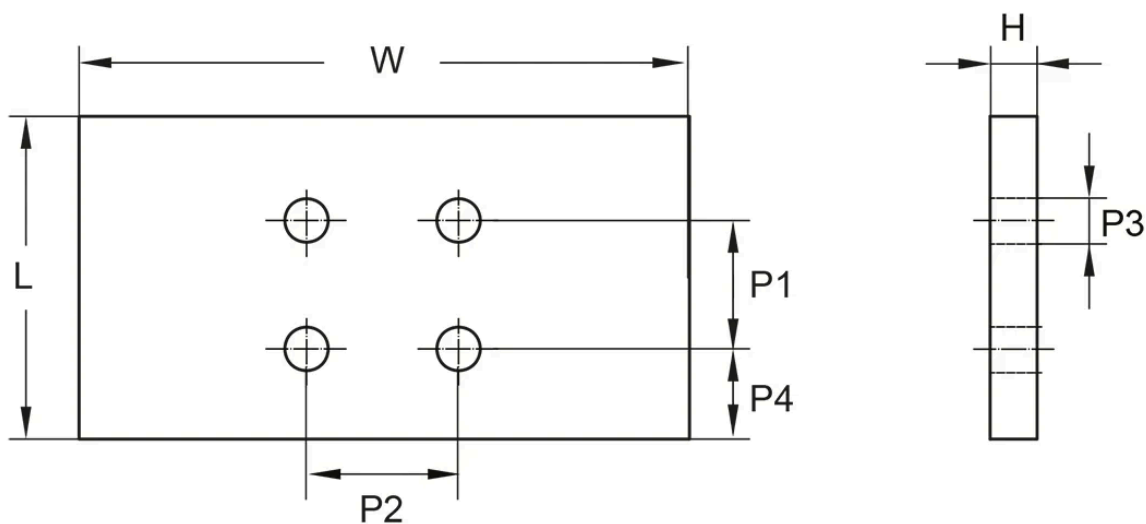
Dimensions in mm.



## General Data

| Designation | Compatible with      | Remark   | Recommended screw size | Weight (kg) |
|-------------|----------------------|--|------------------------|-------------|
| PMK15-4     | MK1514D,<br>MKS1514D | Use Distance Plate PMK15-4 for HRC15MN                                 | M4                     | 0.065       |
| PMK20-2-A   | MK2014D,<br>MKS2014D | Use Distance Plate PMK20-2-A for HRC20FL,<br>HRC20FN, HRC20ML, HRC20MN | M6                     | 0.029       |
| PMK25-4     | MK2514D,<br>MKS2514D | Use Distance Plate PMK25-4 for HRC25ML,<br>HRC25MN                     | M6                     | 0.078       |
| PMK30-3     | MK3005A,<br>MKS3005A | Use Distance Plate PMK30-3 for HRC30ML,<br>HRC30MN                     | M8                     | 0.077       |
| PMK35-7     | MK3514D,<br>MKS3514D | Use Distance Plate PMK35-7 for HRC35ML,<br>HRC35MN                     | M8                     | 0.2         |
| PMK45-10    | MK4514D,<br>MKS4514D | Use Distance Plate PMK45-10 for HRC45ML,<br>HRC45MN                    | M10                    | 0.43        |

## Dimensions



| Designation | H  | L  | P1 | P2 | P3   | P4   | W   |
|-------------|----|----|----|----|------|------|-----|
| PMK15-4     | 4  | 39 | 15 | 15 | 4.5  | 15.5 | 55  |
| PMK20-2-A   | 2  | 30 | 20 | 20 | 6.5  | 5    | 66  |
| PMK25-4     | 4  | 35 | 20 | 20 | 6.5  | 5    | 75  |
| PMK30-3     | 3  | 39 | 22 | 22 | 8.5  | 8.5  | 90  |
| PMK35-7     | 7  | 39 | 24 | 24 | 8.5  | 7.5  | 100 |
| PMK45-10    | 10 | 49 | 26 | 26 | 10.5 | 11.5 | 120 |