

## WRC Rail

Counterbore from above.  
Cut to length acc. to request.  
Rails can be joint together for extra long lengths.  
Contact Rollco for more information.

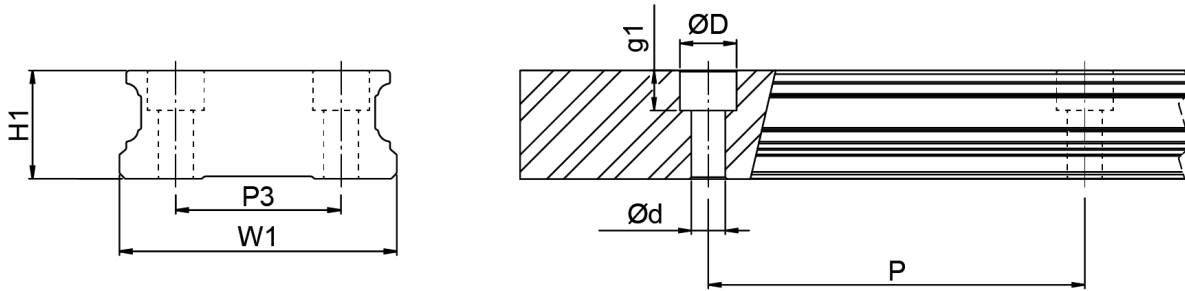
Dimensions in mm.



## General Data

Designation	Weight Rail (g/m)	Length (mm)
WRC21/15	3596	4000
WRC27/20	5259	4000

## Dimensions



Designation	H1	W1	D x d x g1	Hole Pitch (P)	P3
WRC21/15	14.4	37	7.5 x 4.5 x 5.3	50	22
WRC27/20	18.5	42	7.5 x 4.5 x 5.3	60	24