

## Adapter Plate for MK & MKS Clamping Elements

Because of the height difference of different rail guide blocks and to ensure the proper function of the MK and MKS Clamping Elements, the use of adapter plates is sometimes needed. See "Clamping Elements and Accessories" for individual block types and whether an adapter plate is needed.

Compatible with Linear Rail SBI only.

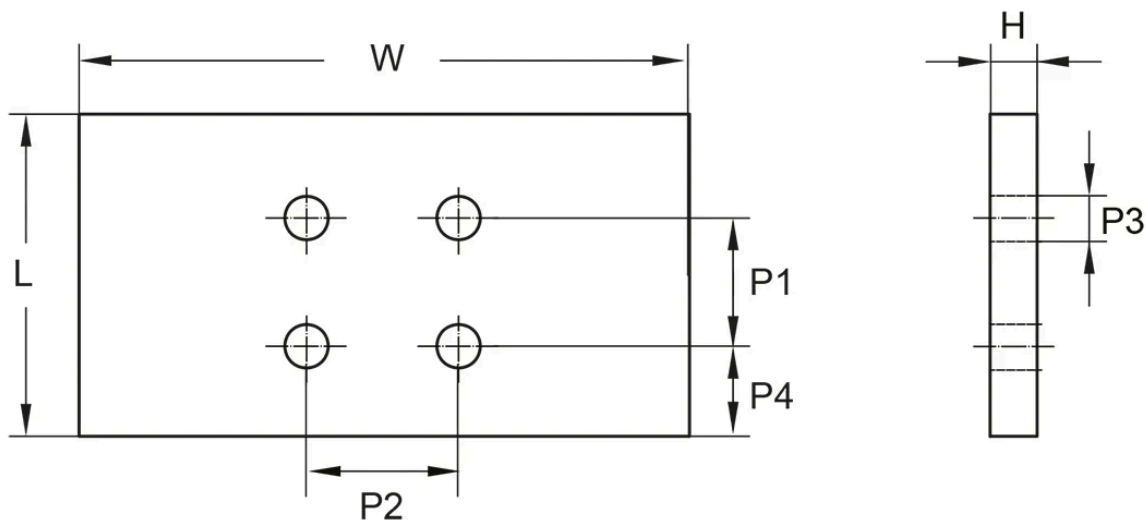
Dimensions in mm.



## General Data

Designation	Compatible with	Remark	Recommended screw size
PMK15-4	MK1501A and MKS1501A	Use Distance Plate PMK15-4 for SBI15SL, SBI15SLL	M4
PMK20-2-A	MK2001A and MKS2001A	Use Distance Plate PMK20-2-A for SBI20FL, SBI20FLL, SBI20SL, SBI20SLL	M6
PMK25-2	MK2501A and MKS2501A	Use Distance Plate PMK25-2 for SBI25FL, SBI25FLL, SBI25HL, SBI25HLL	M6
PMK25-6	MK2501A and MKS2501A	Use Distance Plate PMK25-6 for SBI25SL, SBI25SLL	M6
PMK30-3	MK3001A and MKS3001A	Use Distance Plate PMK25-6 for SBI30SL, SBI30SLL	M8
PMK35-4	MK3501A and MKS3501A	Use Distance Plate PMK35-4 for SBI35FL, SBI35FLL, SBI35HL, SBI35HLL	M8
PMK35-11	MK3501A and MKS3501A	Use Distance Plate PMK35-11 for SBI35SL, SBI35SLL	M8
PMK45-6	MK4501A and MKS4501A	Use Distance Plate PMK45-6 for SBI45FL, SBI45FLL, SBI45HL, SBI45HLL	M10
PMK45-16	MK4501A and MKS4501A	Use Distance Plate PMK45-16 for SBI45SL, SBI45SLL	M10
PMK55-6	MK5501A and MKS5501A	Use Distance Plate PMK55-6 for SBI55FL, SBI55FLL, SBI55HL, SBI55HLL	M10
PMK55-16	MK5501A and MKS5501A	Use Distance Plate PMK55-16 for SBI55SL, SBI55SLL	M10

## Dimensions



Designation	H	L	P1	P2	P3	P4	W
PMK15-4	4	39	15	15	4.5	15.5	55
PMK20-2-A	2	30	20	20	6.5	5	66
PMK25-2	2	35	20	20	6.5	5	75
PMK25-6	6	35	20	20	6.5	5	75
PMK30-3	3	39	22	22	8.5	8.5	90
PMK35-4	4	39	24	24	8.5	7.5	100
PMK35-11	11	39	24	24	8.5	7.5	100

Designation	H	L	P1	P2	P3	P4	W
PMK45-6	6	49	26	26	10.5	11.5	120
PMK45-16	16	49	26	26	10.5	11.5	120
PMK55-6	6	49	30	30	10.5	9.5	128
PMK55-16	16	49	30	30	10.5	9.5	128