

Foot mounting MAHP

Dimensions in mm.

Set contains 2 pcs (i.e. for both front and rear mounting).

Mounting screws are included.

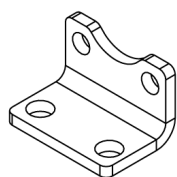
Material: Stainless steel



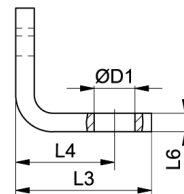
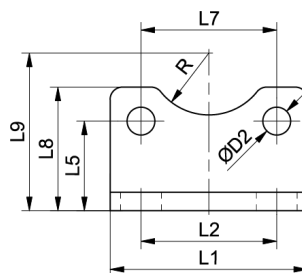
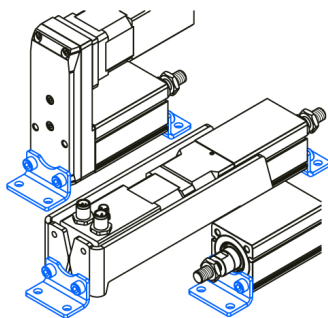
General Data

| Designation | Description | Compatible with | Material | Fmax (N) | Mass (kg) |
|-------------------------|-------------|-----------------|-----------------|----------|-----------|
| MAHP 25 - 108253 | MAHP 25 | MCE 25 | Stainless steel | F MCE | 0.04 |
| MAHP 32 - 108254 | MAHP 32 | MCE 32 | Stainless steel | F MCE | 0.06 |
| MAHP 45 - 108255 | MAHP 45 | MCE 45 | Stainless steel | F MCE | 0.11 |

Dimensions



Fixed support



| Designation | L1 | L2 | L3 | L4 | L6 | L8 | L9 | D1 | R |
|------------------|----|----|------|----|----|------|------|-----|----|
| MAHP 25 - 108253 | 25 | 18 | 17.5 | 13 | 3 | 17.5 | 22 | 5.5 | 9 |
| MAHP 32 - 108254 | 32 | 22 | 22 | 16 | 3 | 20 | 25.5 | 6.6 | 10 |
| MAHP 45 - 108255 | 45 | 32 | 26.2 | 18 | 3 | 24 | 32 | 6.6 | 13 |

| Designation | L5 Front | L5 Rear | L7 Front | L7 Rear | ØD2 Front | ØD2 Rear |
|------------------|----------|---------|----------|---------|-----------|----------|
| MAHP 25 - 108253 | 11.5 | 13 | 21 | 18 | 2.8 | 4.5 |
| MAHP 32 - 108254 | 14.5 | 14.5 | 22 | 22 | 4.5 | 5.5 |
| MAHP 45 - 108255 | 16 | 16 | 32 | 32 | 6.6 | 6.6 |