

Table of contents

- HRC FN
- HRC FL
- HRC MN
- HRC ML
- ARC FN
- ARC FS
- ARC MN
- ARC ML
- ARC MS
- ERC MN
- ERC ML
- HRC Rail
- HRU Rail
- NBR Seal / Metal Scraper
- HK Clamping Element
- Adapter Plate for HK Clamping Element
- MK Clamping Element
- MKS Clamping Element
- Metal-Plastic Cap
- RA Grease
- Main body of Grease Gun
- Lubrication kit GP-PT1/8-01
- Standard grease nipple
- Optional straight adapter
- Optional L-type adapter

HRC FN

Flanged type block with and without ball chain. HRC55FN is without ball chain.

For high load applications or any application where severe chock-loads may occur, the standard version offers better safety margins by its higher static limit (C0). For light to medium loads where a very long lifetime is required, the ball-cage will show superior life span and reliability.

Please note that ball chain versions must never be used for linear speeds exceeding 3 m/s!

Size 15 delivered with straight standard nipple.
Size 20 – 55 delivered with angled standard nipple.

Lubrications injections ports on the block:

N1: Front of the block. All blocks are delivered with front mounted standard grease nipple.

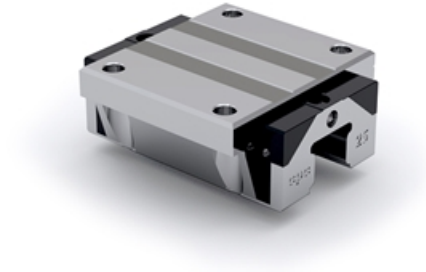
N2: Side of the block. The side lubrication injection port is sealed on delivery to prevent leakage of lubrication.

N3: Top of the block with an O-ring seal. The top lubrication injection port is sealed on delivery to prevent leakage of lubrication.

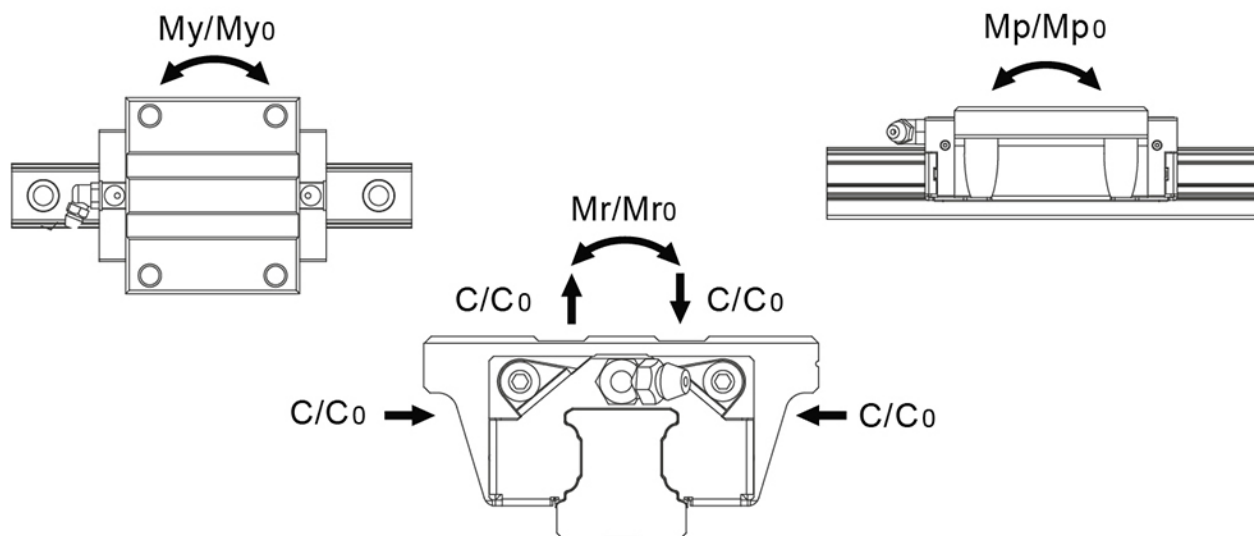
Dimensions in mm.

Lead times in the table below are only indications. Choice of preload, accuracy class and other options will affect lead time. Please contact us for exact delivery time for your request.

For more information about calculation of life, load rating and static moment see Technical information.



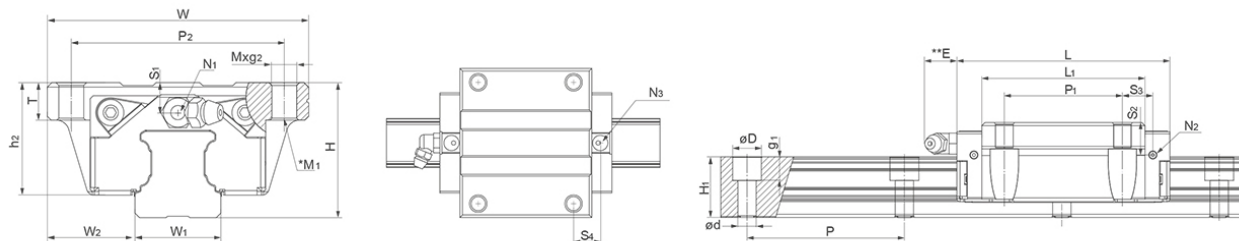
General Data



| Designation | Remark | Dynamic Load Capacity C (N) | Static Load Capacity C0 (N) | Static Moment Mp0 (Nm) | Static Moment Mr0 (Nm) |
|-------------|---------------|-----------------------------|-----------------------------|------------------------|------------------------|
| HRC15FN | - | 9900 | 17500 | 105 | 140 |
| HRC20FN | - | 17100 | 30000 | 230 | 325 |
| HRC25FN | - | 24800 | 42500 | 385 | 540 |
| HRC30FN | - | 32800 | 53700 | 565 | 845 |
| HRC35FN | - | 45900 | 82900 | 1080 | 1700 |
| HRC45FN | - | 71300 | 122100 | 1910 | 3200 |
| HRC55FN | No ball chain | 128000 | 186000 | 3278 | 4949 |

| Designation | Static Moment My0 (Nm) | Dynamic Moment Mr (Nm) | Dynamic Moment Mp (Nm) | Dynamic Moment My (Nm) | Weight Block (g) |
|-------------|------------------------|------------------------|------------------------|------------------------|------------------|
| HRC15FN | 105 | 79 | 59 | 59 | 200 |
| HRC20FN | 230 | 185 | 131 | 131 | 318 |
| HRC25FN | 385 | 315 | 225 | 225 | 578 |
| HRC30FN | 565 | 516 | 345 | 345 | 896 |
| HRC35FN | 1080 | 941 | 598 | 598 | 1430 |
| HRC45FN | 1910 | 1869 | 1115 | 1115 | 2794 |
| HRC55FN | 3278 | 3406 | 2256 | 2256 | 5440 |

Dimensions



*M1: Bolt size for bottom mounting type of block
 **E: Size 15 delivered with straight standard nipple.
 Size 20 – 55 delivered with angled standard nipple.

| Designation | L | H | W | L1 | H1 | h2 | W1 | W2 | S1 |
|-------------|-------|----|-----|-------|------|------|----|------|------|
| HRC15FN | 55.5 | 24 | 47 | 40.3 | 15 | 20.7 | 15 | 16 | 8.5 |
| HRC20FN | 69 | 30 | 63 | 52 | 20 | 25 | 20 | 21.5 | 6 |
| HRC25FN | 81.2 | 36 | 70 | 62.2 | 23 | 30 | 23 | 23.5 | 12 |
| HRC30FN | 95.5 | 42 | 90 | 71.5 | 27 | 35.2 | 28 | 31 | 10.5 |
| HRC35FN | 111.2 | 48 | 100 | 86.2 | 32 | 40.4 | 34 | 33 | 15 |
| HRC45FN | 135.5 | 60 | 120 | 102.5 | 39 | 50.7 | 45 | 37.5 | 21.1 |
| HRC55FN | 168.5 | 70 | 140 | 126.5 | 45.7 | 58 | 53 | 43.5 | 13.5 |

| Designation | S2 | S3 | S4 | E | T | N1 | N2 | N3 | M x g2 | M1 |
|-------------|------|------|------|-----|----|------------|---------|----|--------|-----|
| HRC15FN | 11.5 | 9.8 | 10.9 | 5.3 | 7 | M3x6.5 | M3x6 | P3 | M5x7 | M4 |
| HRC20FN | 9.4 | 11 | 11.7 | 10 | 10 | M3x7.5 | M3x5.5 | P4 | M6x10 | M5 |
| HRC25FN | 16.3 | 16.6 | 17.6 | 12 | 12 | M6x7.5 | M3x6.5 | P4 | M8x12 | M6 |
| HRC30FN | 15 | 20.8 | 20.5 | 12 | 16 | M6x8.5 | M6x5 | P5 | M10x15 | M8 |
| HRC35FN | 22 | 23.4 | 24.1 | 12 | 16 | M6x10 | M6x7 | P5 | M10x15 | M8 |
| HRC45FN | 28.1 | 27.3 | 27.3 | 14 | 19 | PTI/8x12.5 | M6x10.5 | P5 | M12x18 | M10 |
| HRC55FN | 23.5 | 24.8 | 23.8 | 12 | 18 | M6x10 | M6x13 | P5 | M14x18 | M12 |

| Designation | D x d x g1 | P1 | P2 | Hole Pitch (P) |
|-------------|-----------------|----|-----|----------------|
| HRC15FN | 7.5 x 4.5 x 5.3 | 30 | 38 | 60 |
| HRC20FN | 9.5 x 6 x 8.5 | 40 | 53 | 60 |
| HRC25FN | 11 x 7 x 9 | 45 | 57 | 60 |
| HRC30FN | 14 x 9 x 12 | 52 | 72 | 80 |
| HRC35FN | 14 x 9 x 12 | 62 | 82 | 80 |
| HRC45FN | 20 x 14 x 17 | 80 | 100 | 105 |
| HRC55FN | 24 x 16 x 20 | 95 | 116 | 120 |

HRC FL

Flanged type, long block with and without ball chain.
HRC55FL is without ball chain.

For high load applications or any application where severe chock-loads may occur, the standard version offers better safety margins by its higher static limit (C0). For light to medium loads where a very long lifetime is required, the ball-cage will show superior life span and reliability.

Please note that ball chain versions must never be used for linear speeds exceeding 3 m/s!

Size 20 – 55 delivered with angled standard nipple.

Lubrications injections ports on the block:

N1: Front of the block. All blocks are delivered with front mounted standard grease nipple.

N2: Side of the block. The side lubrication injection port is sealed on delivery to prevent leakage of lubrication.

N3: Top of the block with an O-ring seal. The top lubrication injection port is sealed on delivery to prevent leakage of lubrication.

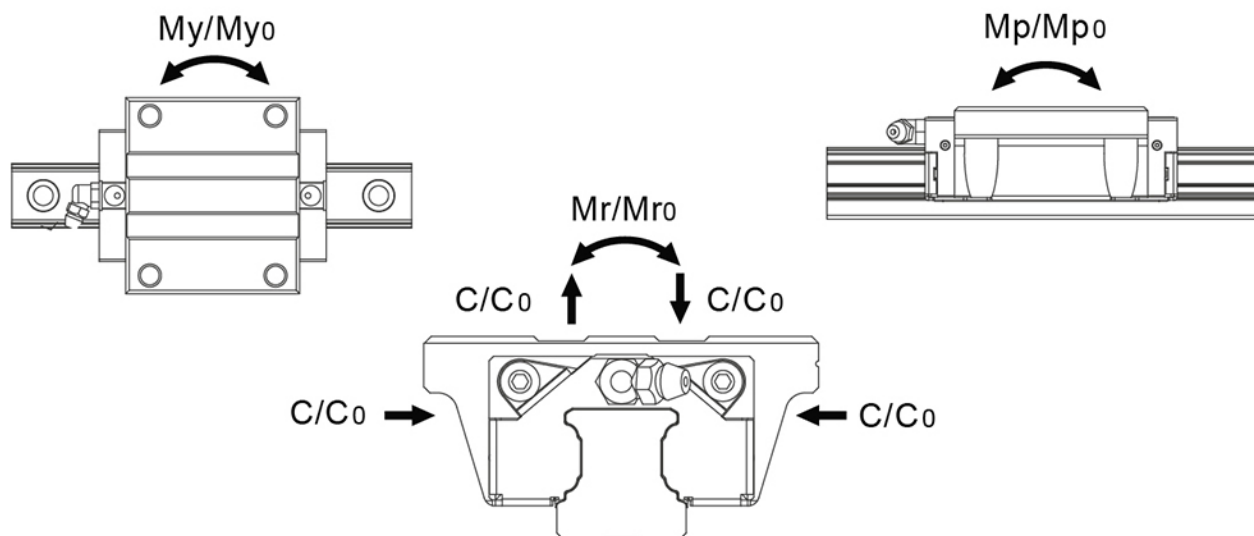
Dimensions in mm.

Lead times in the table below are only indications. Choice of preload, accuracy class and other options will affect lead time. Please contact us for exact delivery time for your request.

For more information about calculation of life, load rating and static moment see Technical information.



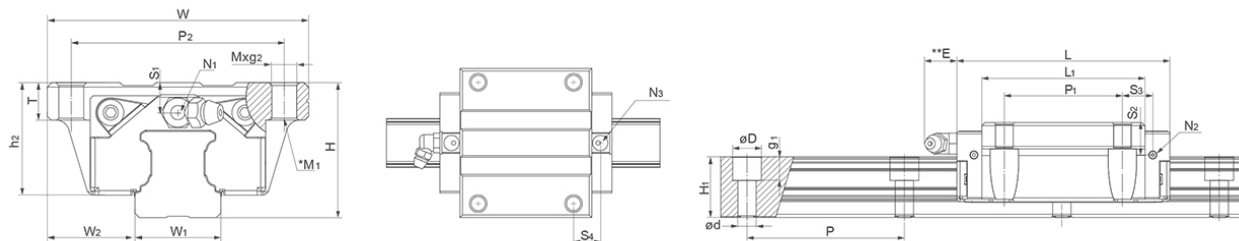
General Data



| Designation | Remark | Dynamic Load Capacity C (N) | Static Load Capacity C0 (N) | Static Moment Mp0 (Nm) | Static Moment Mr0 (Nm) |
|-------------|---------------|-----------------------------|-----------------------------|------------------------|------------------------|
| HRC20FL | - | 20400 | 38500 | 390 | 415 |
| HRC25FL | - | 30700 | 57700 | 710 | 735 |
| HRC30FL | - | 39600 | 70200 | 950 | 1105 |
| HRC35FL | - | 54700 | 106500 | 1755 | 2185 |
| HRC45FL | - | 89500 | 169100 | 3460 | 4430 |
| HRC55FL | No ball chain | 147000 | 226000 | 5284 | 6472 |

| Designation | Static Moment My0 (Nm) | Dynamic Moment Mr (Nm) | Dynamic Moment Mp (Nm) | Dynamic Moment My (Nm) | Weight Block (g) |
|-------------|------------------------|------------------------|------------------------|------------------------|------------------|
| HRC20FL | 390 | 220 | 207 | 207 | 504 |
| HRC25FL | 710 | 391 | 378 | 378 | 870 |
| HRC30FL | 950 | 623 | 536 | 536 | 1385 |
| HRC35FL | 1755 | 1122 | 901 | 901 | 2000 |
| HRC45FL | 3460 | 2345 | 1831 | 1831 | 4280 |
| HRC55FL | 5284 | 4210 | 3437 | 3437 | 6963 |

Dimensions



*M1: Bolt size for bottom mounting type of block
 **E: Size 15 delivered with straight standard nipple.
 Size 20 – 55 delivered with angled standard nipple.

| Designation | L | H | W | L ₁ | H ₁ | h ₂ | W ₁ | W ₂ | S ₁ |
|-------------|-------|----|-----|----------------|----------------|----------------|----------------|----------------|----------------|
| HRC20FL | 87.2 | 30 | 63 | 70.2 | 20 | 25 | 20 | 21.5 | 6 |
| HRC25FL | 105 | 36 | 70 | 86 | 23 | 30 | 23 | 23.5 | 8 |
| HRC30FL | 118 | 42 | 90 | 94 | 27 | 35.2 | 28 | 31 | 8 |
| HRC35FL | 136.6 | 48 | 100 | 111.6 | 32 | 40.4 | 34 | 33 | 7.5 |
| HRC45FL | 171.5 | 60 | 120 | 138.5 | 39 | 50.7 | 45 | 37.5 | 11.1 |
| HRC55FL | 202 | 70 | 140 | 160 | 45.7 | 58 | 53 | 43.5 | 13.5 |

| Designation | S ₂ | S ₃ | S ₄ | E | T | N ₁ | N ₂ | N ₃ | M x g ₂ | M ₁ |
|-------------|----------------|----------------|----------------|----|----|----------------|----------------|----------------|--------------------|----------------|
| HRC20FL | 9.4 | 18.1 | 18.8 | 10 | 10 | M3x7.5 | M3x5.5 | P4 | M6x10 | M5 |
| HRC25FL | 12.3 | 23.5 | 24.5 | 12 | 16 | M6x7.5 | M3x6.5 | P4 | M8x12 | M6 |
| HRC30FL | 12 | 25.7 | 25.8 | 12 | 12 | M6x8.5 | M6x5 | P5 | M10x15 | M8 |
| HRC35FL | 15 | 30.1 | 30.8 | 12 | 16 | M6x10 | M6x7 | P5 | M10x15 | M8 |
| HRC45FL | 18.1 | 35 | 35 | 14 | 19 | PTI/8x12.5 | M6x10.5 | P5 | M12x18 | M10 |
| HRC55FL | 23.5 | 41.5 | 40.5 | 12 | 18 | M6x10 | M6x13 | P5 | M14x18 | M12 |

| Designation | D x d x g ₁ | P ₁ | P ₂ | Hole Pitch (P) |
|-------------|------------------------|----------------|----------------|----------------|
| HRC20FL | 9.5 x 6 x 8.5 | 40 | 53 | 60 |
| HRC25FL | 11 x 7 x 9 | 45 | 57 | 60 |
| HRC30FL | 14 x 9 x 12 | 52 | 72 | 80 |
| HRC35FL | 14 x 9 x 12 | 62 | 82 | 80 |
| HRC45FL | 20 x 14 x 17 | 80 | 100 | 105 |
| HRC55FL | 24 x 16 x 20 | 95 | 116 | 120 |

HRC MN

Slim block with and without ball chain. HRC55MN is only available without ball chain.

For high load applications or any application where severe chock-loads may occur, the standard version offers better safety margins by its higher static limit (C0). For light to medium loads where a very long lifetime is required, the ball-cage will show superior life span and reliability.

Please note that ball chain versions must never be used for linear speeds exceeding 3 m/s!

Size 15 delivered with straight standard nipple.
Size 20 – 55 delivered with angled standard nipple.

Lubrications injections ports on the block:

N1: Front of the block. All blocks are delivered with front mounted standard grease nipple.

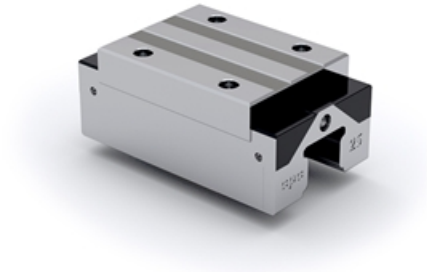
N2: Side of the block. The side lubrication injection port is sealed on delivery to prevent leakage of lubrication.

N3: Top of the block with an O-ring seal. The top lubrication injection port is sealed on delivery to prevent leakage of lubrication.

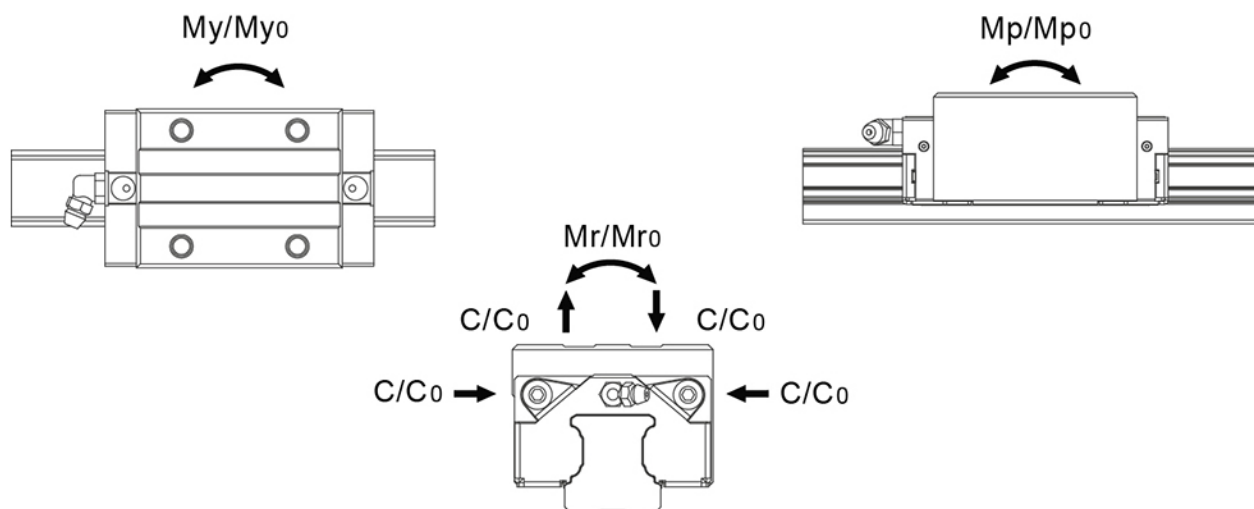
Dimensions in mm.

Lead times in the table below are only indications. Choice of preload, accuracy class and other options will affect lead time. Please contact us for exact delivery time for your request.

For more information about calculation of life, load rating and static moment see Technical information.



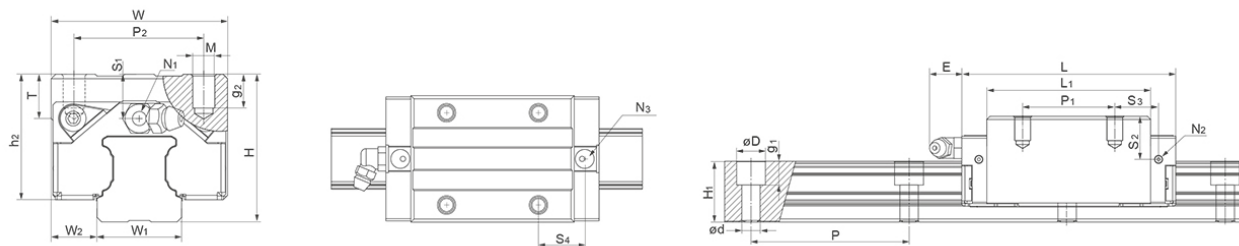
General Data



| Designation | Remark | Dynamic Load Capacity C (N) | Static Load Capacity C0 (N) | Static Moment Mp0 (Nm) | Static Moment Mr0 (Nm) |
|-------------|---------------|-----------------------------|-----------------------------|------------------------|------------------------|
| HRC15MN | - | 9900 | 17500 | 105 | 140 |
| HRC20MN | - | 17100 | 30000 | 230 | 325 |
| HRC25MN | - | 24800 | 42500 | 385 | 540 |
| HRC30MN | - | 32800 | 53700 | 565 | 845 |
| HRC35MN | - | 45900 | 82900 | 1080 | 1700 |
| HRC45MN | - | 71300 | 122100 | 1910 | 3200 |
| HRC55MN | No ball chain | 128000 | 186000 | 3278 | 4949 |

| Designation | Static Moment My0 (Nm) | Dynamic Moment Mr (Nm) | Dynamic Moment Mp (Nm) | Dynamic Moment My (Nm) | Weight Block (g) |
|-------------|------------------------|------------------------|------------------------|------------------------|------------------|
| HRC15MN | 105 | 79 | 59 | 59 | 200 |
| HRC20MN | 230 | 185 | 131 | 131 | 318 |
| HRC25MN | 385 | 315 | 225 | 225 | 578 |
| HRC30MN | 565 | 516 | 345 | 345 | 896 |
| HRC35MN | 1080 | 941 | 598 | 598 | 1430 |
| HRC45MN | 1910 | 1869 | 1115 | 1115 | 2794 |
| HRC55MN | 3278 | 3406 | 2256 | 2256 | 5110 |

Dimensions



**E: Size 15 delivered with straight standard nipple.
Size 20 – 55 delivered with angled standard nipple.

| Designation | L | H | W | L ₁ | H ₁ | h ₂ | W ₁ | W ₂ | S ₁ |
|-------------|-------|----|-----|----------------|----------------|----------------|----------------|----------------|----------------|
| HRC15MN | 55.5 | 28 | 34 | 40.3 | 15 | 24.7 | 15 | 9.5 | 8.5 |
| HRC20MN | 69 | 30 | 44 | 52 | 20 | 25 | 20 | 12 | 6 |
| HRC25MN | 81.2 | 40 | 48 | 62.2 | 23 | 34 | 23 | 12.5 | 12 |
| HRC30MN | 95.5 | 45 | 60 | 71.5 | 27 | 38.4 | 28 | 16 | 10.5 |
| HRC35MN | 111.2 | 55 | 70 | 86.2 | 32 | 47.4 | 34 | 18 | 15 |
| HRC45MN | 135.5 | 70 | 86 | 102.5 | 39 | 60.7 | 45 | 20.5 | 21.1 |
| HRC55MN | 168.5 | 80 | 100 | 126.5 | 45.7 | 68 | 53 | 23.5 | 23.5 |

| Designation | S ₂ | S ₃ | S ₄ | E | T | N ₁ | N ₂ | N ₃ | M x g ₂ | D x d x g ₁ |
|-------------|----------------|----------------|----------------|-----|----|----------------|----------------|----------------|--------------------|------------------------|
| HRC15MN | 11.5 | 9.8 | 10.9 | 5.3 | 6 | M3x6.5 | M3x6 | P3 | M4x7 | 7.5 x 4.5 x 5.3 |
| HRC20MN | 9.4 | 11 | 11.7 | 10 | 8 | M3x7.5 | M3x5.5 | P4 | M5x8.5 | 9.5 x 6 x 8.5 |
| HRC25MN | 16.3 | 16.6 | 17.6 | 12 | 12 | M6x7.5 | M3x6.5 | P4 | M6x9 | 11 x 7 x 9 |
| HRC30MN | 15 | 20.8 | 20.5 | 12 | 12 | M6x8.5 | M6x5 | P5 | M8x12 | 14 x 9 x 12 |
| HRC35MN | 22 | 23.4 | 24.1 | 12 | 14 | M6x10 | M6x7 | P5 | M8x13 | 14 x 9 x 12 |
| HRC45MN | 28.1 | 27.3 | 27.3 | 14 | 14 | PTI/8x12.5 | M6x10.5 | P5 | M10x20 | 20 x 14 x 17 |
| HRC55MN | 33.5 | 34.8 | 33.8 | 12 | 16 | M6x10 | M6x13 | P5 | M12x25 | 24 x 16 x 20 |

| Designation | P ₁ | P ₂ | Hole Pitch (P) |
|-------------|----------------|----------------|----------------|
| HRC15MN | 26 | 26 | 60 |
| HRC20MN | 36 | 32 | 60 |
| HRC25MN | 35 | 35 | 60 |
| HRC30MN | 40 | 40 | 80 |
| HRC35MN | 50 | 50 | 80 |
| HRC45MN | 60 | 60 | 105 |
| HRC55MN | 75 | 75 | 120 |

HRC ML

Slim, long block with and without ball chain. HRC55ML is without ball chain.

For high load applications or any application where severe chock-loads may occur, the standard version offers better safety margins by its higher static limit (C0). For light to medium loads where a very long lifetime is required, the ball-cage will show superior life span and reliability.

Please note that ball chain versions must never be used for linear speeds exceeding 3 m/s!

Size 20 – 55 delivered with angled standard nipple.

Lubrifications injections ports on the block:

N1: Front of the block. All blocks are delivered with front mounted standard grease nipple.

N2: Side of the block. The side lubrication injection port is sealed on delivery to prevent leakage of lubrication.

N3: Top of the block with an O-ring seal. The top lubrication injection port is sealed on delivery to prevent leakage of lubrication.

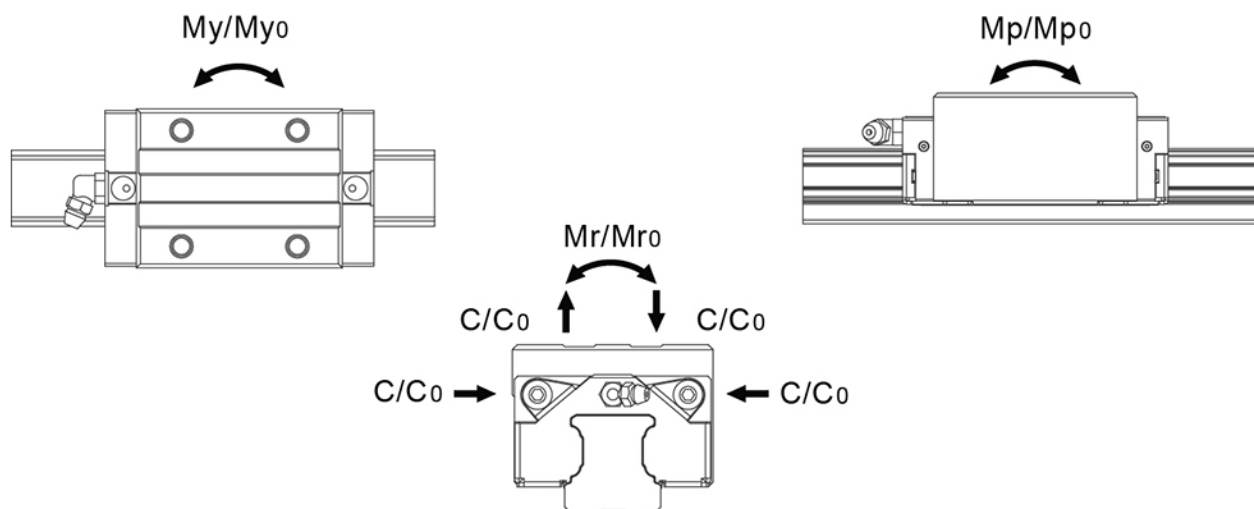
Dimensions in mm.

Lead times in the table below are only indications. Choice of preload, accuracy class and other options will affect lead time. Please contact us for exact delivery time for your request.

For more information about calculation of life, load rating and static moment see Technical information.



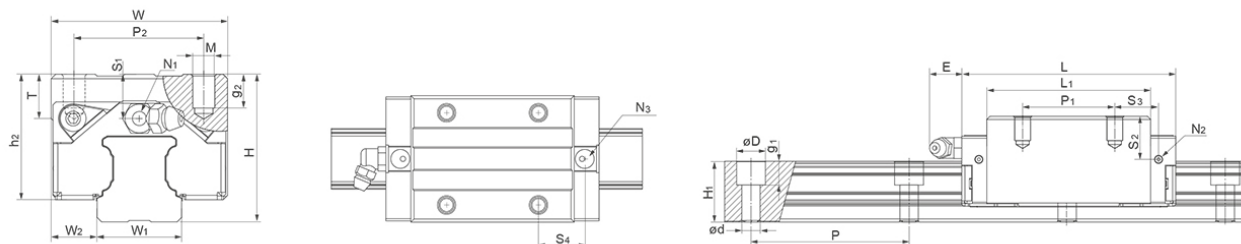
General Data



| Designation | Remark | Dynamic Load Capacity C (N) | Static Load Capacity C0 (N) | Static Moment Mp0 (Nm) | Static Moment Mr0 (Nm) |
|-------------|---------------|-----------------------------|-----------------------------|------------------------|------------------------|
| HRC20ML | - | 20400 | 38500 | 390 | 415 |
| HRC25ML | - | 30700 | 57700 | 710 | 735 |
| HRC30ML | - | 39600 | 70200 | 950 | 1105 |
| HRC35ML | - | 54700 | 106500 | 1755 | 2185 |
| HRC45ML | - | 89500 | 169100 | 3460 | 4430 |
| HRC55ML | No ball chain | 147000 | 226000 | 5284 | 6472 |

| Designation | Static Moment My0 (Nm) | Dynamic Moment Mr (Nm) | Dynamic Moment Mp (Nm) | Dynamic Moment My (Nm) | Weight Block (g) |
|-------------|------------------------|------------------------|------------------------|------------------------|------------------|
| HRC20ML | 390 | 220 | 207 | 207 | 400 |
| HRC25ML | 710 | 391 | 378 | 378 | 685 |
| HRC30ML | 950 | 623 | 536 | 536 | 1150 |
| HRC35ML | 1755 | 1122 | 901 | 901 | 1953 |
| HRC45ML | 3460 | 2345 | 1831 | 1831 | 4060 |
| HRC55ML | 5284 | 4210 | 3437 | 3437 | 6243 |

Dimensions



**E: Size 15 delivered with straight standard nipple.
Size 20 – 55 delivered with angled standard nipple.

| Designation | L | H | W | L1 | H1 | h2 | W1 | W2 | S1 |
|-------------|-------|----|-----|-------|------|------|----|------|------|
| HRC20ML | 87.2 | 30 | 44 | 70.2 | 20 | 25 | 20 | 12 | 6 |
| HRC25ML | 105 | 40 | 48 | 86 | 23 | 34 | 23 | 12.5 | 12 |
| HRC30ML | 118 | 45 | 60 | 94 | 27 | 38.4 | 28 | 16 | 10.5 |
| HRC35ML | 136.6 | 55 | 70 | 111.6 | 32 | 47.4 | 34 | 18 | 15 |
| HRC45ML | 171.5 | 70 | 86 | 138.5 | 39 | 60.7 | 45 | 20.5 | 21.1 |
| HRC55ML | 202 | 80 | 100 | 160 | 45.7 | 68 | 53 | 23.5 | 23.5 |

| Designation | S2 | S3 | S4 | E | T | N1 | N2 | N3 | M x g2 | D x d x g1 |
|-------------|------|------|------|----|----|------------|---------|----|--------|---------------|
| HRC20ML | 9.4 | 13.1 | 13.8 | 10 | 8 | M3x7.5 | M3x5.5 | P4 | M5x8.5 | 9.5 x 6 x 8.5 |
| HRC25ML | 16.3 | 21 | 22 | 12 | 12 | M6x7.5 | M3x6.5 | P4 | M6x9 | 11 x 7 x 9 |
| HRC30ML | 15 | 21.7 | 21.8 | 12 | 12 | M6x8.5 | M6x5 | P5 | M8x12 | 14 x 9 x 12 |
| HRC35ML | 22 | 25.1 | 25.8 | 12 | 14 | M6x10 | M6x7 | P5 | M8x13 | 14 x 9 x 12 |
| HRC45ML | 28.1 | 35 | 35 | 14 | 14 | PTI/8x12.5 | M6x10.5 | P5 | M10x20 | 20 x 14 x 17 |
| HRC55ML | 33.5 | 41.5 | 40.5 | 12 | 16 | M6x10 | M6x13 | P5 | M12x25 | 24 x 16 x 20 |

| Designation | P1 | P2 | Hole Pitch (P) |
|-------------|----|----|----------------|
| HRC20ML | 50 | 32 | 60 |
| HRC25ML | 50 | 35 | 60 |
| HRC30ML | 60 | 40 | 80 |
| HRC35ML | 72 | 50 | 80 |
| HRC45ML | 80 | 60 | 105 |
| HRC55ML | 95 | 75 | 120 |

ARC FN

Flanged type block with low height, with and without ball chain.

For high load applications or any application where severe chock-loads may occur, the standard version offers better safety margins by its higher static limit (C0). For light to medium loads where a very long lifetime is required, the ball-cage will show superior life span and reliability.

Please note that ball chain versions must never be used for linear speeds exceeding 3 m/s!

Size 15 delivered with straight standard nipple.
Size 20 – 35 delivered with angled standard nipple.

Lubrications injections ports on the block:

N1: Front of the block. All blocks are delivered with front mounted standard grease nipple.

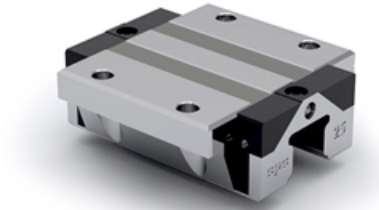
N2: Side of the block. The side lubrication injection port is sealed on delivery to prevent leakage of lubrication.

N3: Top of the block with an O-ring seal. The top lubrication injection port is sealed on delivery to prevent leakage of lubrication.

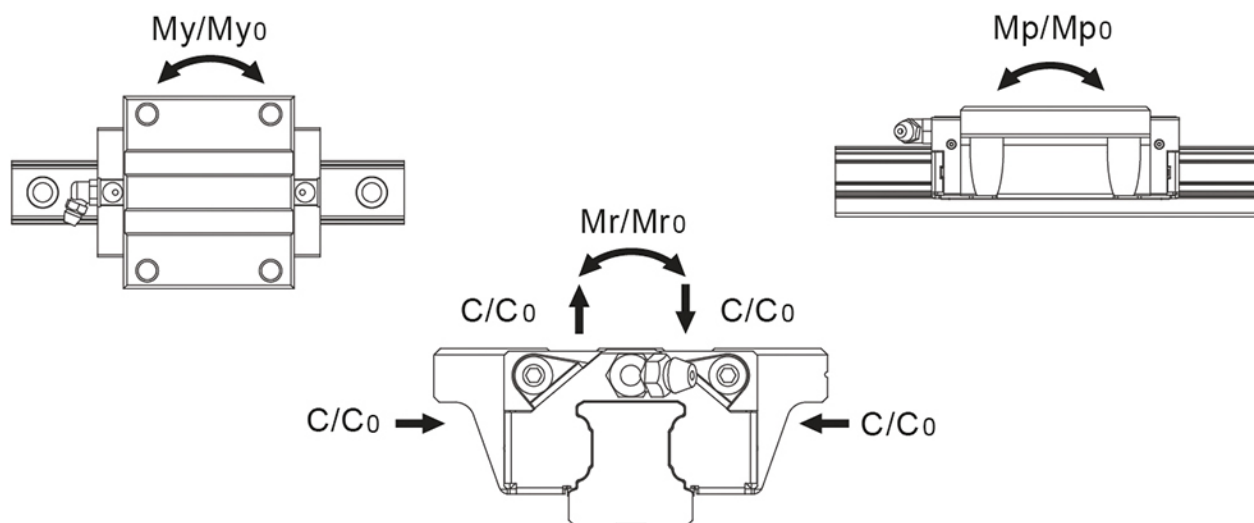
Dimensions in mm.

Lead times in the table below are only indications. Choice of preload, accuracy class and other options will affect lead time. Please contact us for exact delivery time for your request.

For more information about calculation of life, load rating and static moment see Technical information.



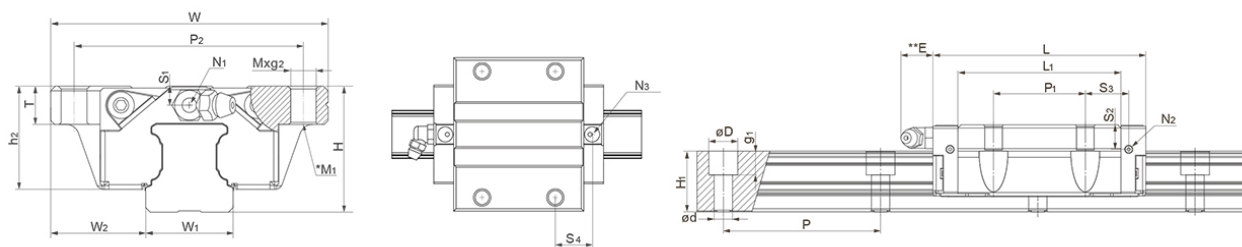
General Data



| Designation | Dynamic Load Capacity C (N) | Static Load Capacity C0 (N) | Static Moment Mp0 (Nm) | Static Moment Mr0 (Nm) | Static Moment My0 (Nm) |
|-------------|-----------------------------|-----------------------------|------------------------|------------------------|------------------------|
| ARC15FN | 9900 | 17500 | 105 | 140 | 105 |
| ARC20FN | 17100 | 30000 | 230 | 325 | 230 |
| ARC25FN | 24800 | 42500 | 385 | 540 | 385 |
| ARC30FN | 32800 | 53700 | 565 | 845 | 565 |
| ARC35FN | 45900 | 82900 | 1080 | 1700 | 1080 |

| Designation | Dynamic Moment Mr (Nm) | Dynamic Moment Mp (Nm) | Dynamic Moment My (Nm) | Weight Block (g) |
|-------------|------------------------|------------------------|------------------------|------------------|
| ARC15FN | 79 | 59 | 59 | 200 |
| ARC20FN | 185 | 131 | 131 | 336 |
| ARC25FN | 315 | 225 | 225 | 524 |
| ARC30FN | 516 | 345 | 345 | 1200 |
| ARC35FN | 941 | 598 | 598 | 1580 |

Dimensions



*M1: Bolt size for bottom mounting type of block
 **E: Size 15 delivered with straight standard nipple.
 Size 20 – 55 delivered with angled standard nipple.

| Designation | L | H | W | L1 | H1 | h2 | W1 | W2 | S1 |
|-------------|-------|----|-----|------|----|------|----|------|-----|
| ARC15FN | 55.5 | 24 | 52 | 40.3 | 15 | 20.7 | 15 | 18.5 | 4.5 |
| ARC20FN | 69 | 28 | 59 | 52 | 20 | 23 | 20 | 19.5 | 4 |
| ARC25FN | 81.2 | 33 | 73 | 62.5 | 23 | 27 | 23 | 25 | 5 |
| ARC30FN | 95.5 | 42 | 90 | 71.5 | 27 | 35.2 | 28 | 31 | 7.5 |
| ARC35FN | 111.2 | 48 | 100 | 86.2 | 32 | 40.4 | 34 | 33 | 8 |

| Designation | S2 | S3 | S4 | E | T | N1 | N2 | N3 | M x g2 | M1 |
|-------------|-----|------|------|-----|----|--------|--------|----|--------|----|
| ARC15FN | 7.5 | 8.9 | 10.9 | 5.3 | 7 | M3x6.5 | M3x6 | P3 | M5x7 | M4 |
| ARC20FN | 7.4 | 13 | 13.7 | 10 | 10 | M3x7.5 | M3x5.5 | P4 | M6x10 | M5 |
| ARC25FN | 9.3 | 16.6 | 17.6 | 12 | 12 | M6x7.5 | M3x6.5 | P4 | M8x12 | M6 |
| ARC30FN | 12 | 20.8 | 20.5 | 12 | 15 | M6x8.5 | M6x5 | P5 | M10x15 | M8 |
| ARC35FN | 15 | 23.4 | 24.1 | 12 | 15 | M6x10 | M6x7 | P5 | M10x15 | M8 |

| Designation | D x d x g1 | P1 | P2 | Hole Pitch (P) |
|-------------|-----------------|----|----|----------------|
| ARC15FN | 7.5 x 4.5 x 5.3 | 26 | 41 | 60 |
| ARC20FN | 9.5 x 6 x 8.5 | 32 | 49 | 60 |
| ARC25FN | 11 x 7 x 9 | 35 | 60 | 60 |
| ARC30FN | 14 x 9 x 12 | 40 | 72 | 80 |
| ARC35FN | 14 x 9 x 12 | 50 | 82 | 80 |

ARC FS

Flanged type, super short block with low height, with and without ball chain.

For high load applications or any application where severe chock-loads may occur, the standard version offers better safety margins by its higher static limit (C0). For light to medium loads where a very long lifetime is required, the ball-cage will show superior life span and reliability.

Please note that ball chain versions must never be used for linear speeds exceeding 3 m/s!

Size 15 delivered with straight standard nipple.
Size 20 – 30 delivered with angled standard nipple.

Lubrications injections ports on the block:

N1: Front of the block. All blocks are delivered with front mounted standard grease nipple.

N2: Side of the block. The side lubrication injection port is sealed on delivery to prevent leakage of lubrication.

N3: Top of the block with an O-ring seal. The top lubrication injection port is sealed on delivery to prevent leakage of lubrication.

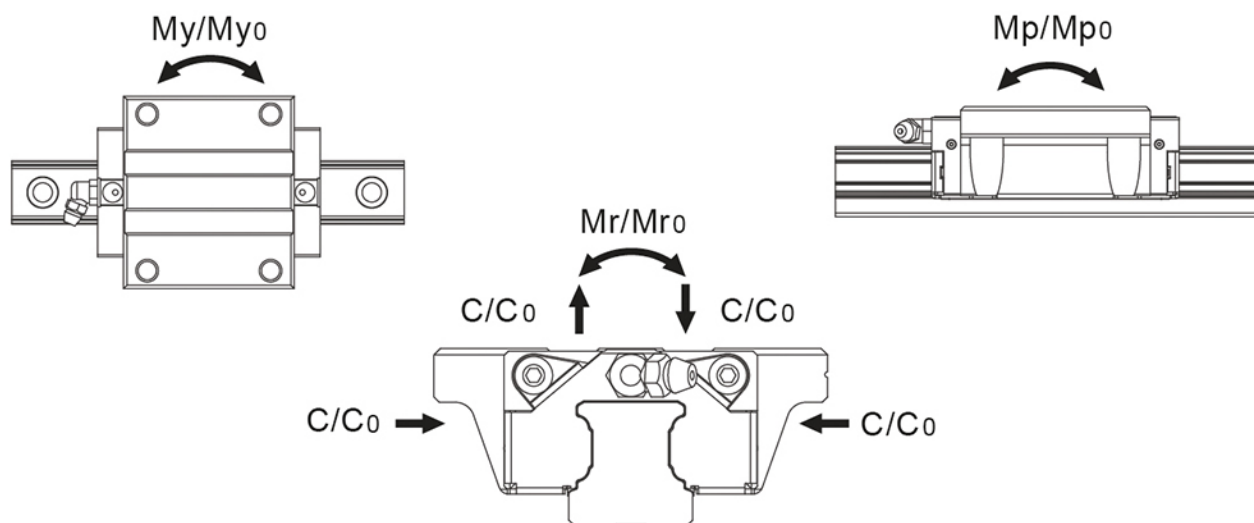
Dimensions in mm.

Lead times in the table below are only indications. Choice of preload, accuracy class and other options will affect lead time. Please contact us for exact delivery time for your request.

For more information about calculation of life, load rating and static moment see Technical information.



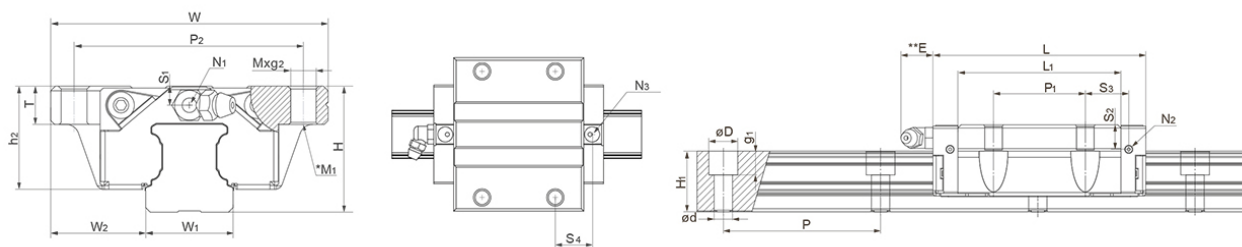
General Data



| Designation | Dynamic Load Capacity C (N) | Static Load Capacity C ₀ (N) | Static Moment Mp ₀ (Nm) | Static Moment Mr ₀ (Nm) | Static Moment My ₀ (Nm) |
|-------------|-----------------------------|---|------------------------------------|------------------------------------|------------------------------------|
| ARC15FS | 7700 | 12100 | 50 | 100 | 50 |
| ARC20FS | 12500 | 19300 | 100 | 205 | 100 |
| ARC25FS | 18200 | 27300 | 160 | 350 | 160 |
| ARC30FS | 23300 | 33100 | 230 | 520 | 230 |

| Designation | Dynamic Moment Mr (Nm) | Dynamic Moment Mp (Nm) | Dynamic Moment My (Nm) | Weight Block (g) |
|-------------|------------------------|------------------------|------------------------|------------------|
| ARC15FS | 64 | 32 | 32 | 132 |
| ARC20FS | 133 | 65 | 65 | 210 |
| ARC25FS | 233 | 107 | 107 | 345 |
| ARC30FS | 366 | 162 | 162 | 750 |

Dimensions



*M1: Bolt size for bottom mounting type of block
 **E: Size 15 delivered with straight standard nipple.
 Size 20 – 55 delivered with angled standard nipple.

| Designation | L | H | W | L1 | H1 | h2 | W1 | W2 | S1 |
|-------------|------|----|----|------|----|------|----|------|-----|
| ARC15FS | 41.2 | 24 | 52 | 26 | 15 | 20.7 | 15 | 18.5 | 4.5 |
| ARC20FS | 49.2 | 28 | 59 | 32.2 | 20 | 23 | 20 | 19.5 | 4 |
| ARC25FS | 57.4 | 33 | 73 | 34.8 | 23 | 27 | 23 | 25 | 5 |
| ARC30FS | 68 | 42 | 90 | 44 | 27 | 35.2 | 28 | 31 | 7.5 |

| Designation | S2 | S3 | S4 | E | T | N1 | N2 | N3 | M x g2 | M1 |
|-------------|-----|------|------|-----|----|--------|--------|----|--------|----|
| ARC15FS | 7.5 | 15.6 | 16.7 | 5.3 | 7 | M3x6.5 | M3x6 | P3 | M5x7 | M4 |
| ARC20FS | 7.4 | 19.1 | 19.8 | 10 | 10 | M3x7.5 | M3x5.5 | P4 | M6x10 | M5 |
| ARC25FS | 9.3 | 22.2 | 23.2 | 12 | 12 | M6x7.5 | M3x6.5 | P4 | M8x12 | M6 |
| ARC30FS | 12 | 27 | 26.8 | 12 | 15 | M6x8.5 | M6x5 | P5 | M10x15 | M8 |

| Designation | D x d x g1 | P2 | Hole Pitch (P) |
|-------------|-----------------|----|----------------|
| ARC15FS | 7.5 x 4.5 x 5.3 | 41 | 60 |
| ARC20FS | 9.5 x 6 x 8.5 | 49 | 60 |
| ARC25FS | 11 x 7 x 9 | 60 | 60 |
| ARC30FS | 14 x 9 x 12 | 72 | 80 |

ARC MN

Slim block with and without ball chain. ARC55MN is without ball chain.

For high load applications or any application where severe chock-loads may occur, the standard version offers better safety margins by its higher static limit (C0). For light to medium loads where a very long lifetime is required, the ball-cage will show superior life span and reliability.

Please note that ball chain versions must never be used for linear speeds exceeding 3 m/s!

Size 15 delivered with straight standard nipple.
Size 20 – 55 delivered with angled standard nipple.

Lubrications injections ports on the block:

N1: Front of the block. All blocks are delivered with front mounted standard grease nipple.

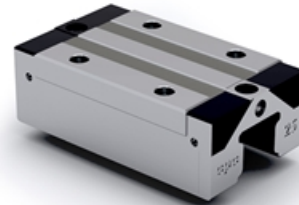
N2: Side of the block. The side lubrication injection port is sealed on delivery to prevent leakage of lubrication.

N3: Top of the block with an O-ring seal. The top lubrication injection port is sealed on delivery to prevent leakage of lubrication.

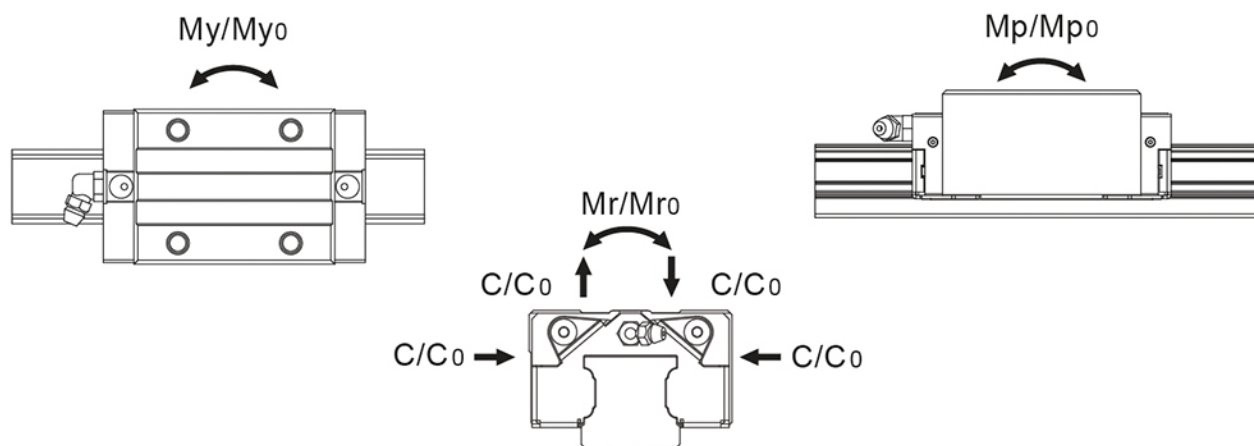
Dimensions in mm.

Lead times in the table below are only indications. Choice of preload, accuracy class and other options will affect lead time. Please contact us for exact delivery time for your request.

For more information about calculation of life, load rating and static moment see Technical information.



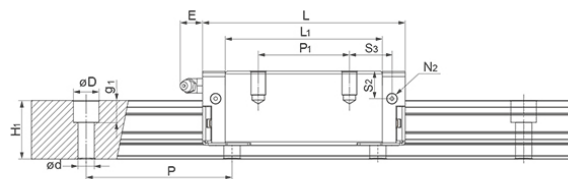
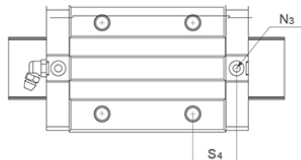
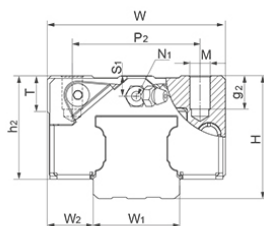
General Data



| Designation | Remark | Dynamic Load Capacity C (N) | Static Load Capacity C0 (N) | Static Moment Mp0 (Nm) | Static Moment Mr0 (Nm) |
|-------------|---------------|-----------------------------|-----------------------------|------------------------|------------------------|
| ARC15MN | - | 9900 | 17500 | 105 | 140 |
| ARC20MN | - | 17100 | 30000 | 230 | 325 |
| ARC25MN | - | 24800 | 42500 | 385 | 540 |
| ARC30MN | - | 32800 | 53700 | 565 | 845 |
| ARC35MN | - | 45900 | 82900 | 1080 | 1700 |
| ARC45MN | - | 71300 | 122100 | 1910 | 3200 |
| ARC55MN | No ball chain | 128000 | 186000 | 3278 | 4949 |

| Designation | Static Moment My0 (Nm) | Dynamic Moment Mr (Nm) | Dynamic Moment Mp (Nm) | Dynamic Moment My (Nm) | Weight Block (g) |
|-------------|------------------------|------------------------|------------------------|------------------------|------------------|
| ARC15MN | 105 | 79 | 59 | 59 | 158 |
| ARC20MN | 230 | 185 | 131 | 131 | 266 |
| ARC25MN | 385 | 315 | 225 | 225 | 420 |
| ARC30MN | 565 | 516 | 345 | 345 | 800 |
| ARC35MN | 1080 | 941 | 598 | 598 | 1120 |
| ARC45MN | 1910 | 1869 | 1115 | 1115 | 2120 |
| ARC55MN | 3278 | 3406 | 2256 | 2256 | 4200 |

Dimensions



**E: Size 15 delivered with straight standard nipple.
Size 20 – 55 delivered with angled standard nipple.

| Designation | L | H | W | L1 | H1 | h2 | W1 | W2 | S1 |
|-------------|-------|----|-----|-------|------|------|----|------|------|
| ARC15MN | 55.5 | 24 | 34 | 40.3 | 15 | 20.7 | 15 | 9.5 | 4.5 |
| ARC20MN | 69 | 28 | 42 | 52 | 20 | 23 | 20 | 11 | 4 |
| ARC25MN | 81.2 | 33 | 48 | 62.2 | 23 | 27 | 23 | 12.5 | 5 |
| ARC30MN | 95.5 | 42 | 60 | 71.5 | 27 | 35.2 | 28 | 16 | 7.5 |
| ARC35MN | 111.2 | 48 | 70 | 86.2 | 32 | 40.4 | 34 | 18 | 8 |
| ARC45MN | 135.5 | 60 | 86 | 102.5 | 39 | 50.7 | 45 | 20.5 | 11.1 |
| ARC55MN | 168.5 | 70 | 100 | 126.5 | 45.7 | 58 | 53 | 23.5 | 13.5 |

| Designation | S2 | S3 | S4 | E | T | N1 | N2 | N3 | M x g2 | D x d x g1 |
|-------------|------|------|------|-----|----|------------|---------|----|--------|-----------------|
| ARC15MN | 7.5 | 9.8 | 10.9 | 5.3 | 6 | M3x6.5 | M3x6 | P3 | M4x7 | 7.5 x 4.5 x 5.3 |
| ARC20MN | 7.4 | 13 | 13.7 | 10 | 8 | M3x7.5 | M3x5.5 | P4 | M5x7 | 9.5 x 6 x 8.5 |
| ARC25MN | 9.3 | 16.6 | 17.6 | 12 | 8 | M6x7.5 | M3x6.5 | P4 | M6x9 | 11 x 7 x 9 |
| ARC30MN | 12 | 20.8 | 20.5 | 12 | 12 | M6x8.5 | M6x5 | P5 | M8x10 | 14 x 9 x 12 |
| ARC35MN | 15 | 23.4 | 24.1 | 12 | 14 | M6x10 | M6x7 | P5 | M8x13 | 14 x 9 x 12 |
| ARC45MN | 18.1 | 27.3 | 27.2 | 14 | 14 | PT1/8x12.5 | M6x10.5 | P5 | M10x17 | 20 x 14 x 17 |
| ARC55MN | 23.5 | 34.8 | 33.8 | 12 | 16 | M6x10 | M6x13 | P5 | M12x20 | 24 x 16 x 20 |

| Designation | P1 | P2 | Hole Pitch (P) |
|-------------|----|----|----------------|
| ARC15MN | 26 | 26 | 60 |
| ARC20MN | 32 | 32 | 60 |
| ARC25MN | 35 | 35 | 60 |
| ARC30MN | 40 | 40 | 80 |
| ARC35MN | 50 | 50 | 80 |
| ARC45MN | 60 | 60 | 105 |
| ARC55MN | 75 | 75 | 120 |

ARC ML

Slim, long block with and without ball chain. ARC55ML is without ball chain.

For high load applications or any application where severe chock-loads may occur, the standard version offers better safety margins by its higher static limit (C0). For light to medium loads where a very long lifetime is required, the ball-cage will show superior life span and reliability.

Please note that ball chain versions must never be used for linear speeds exceeding 3 m/s!

Size 20 – 55 delivered with angled standard nipple.

Lubrications injections ports on the block:

N1: Front of the block. All blocks are delivered with front mounted standard grease nipple.

N2: Side of the block. The side lubrication injection port is sealed on delivery to prevent leakage of lubrication.

N3: Top of the block with an O-ring seal. The top lubrication injection port is sealed on delivery to prevent leakage of lubrication.

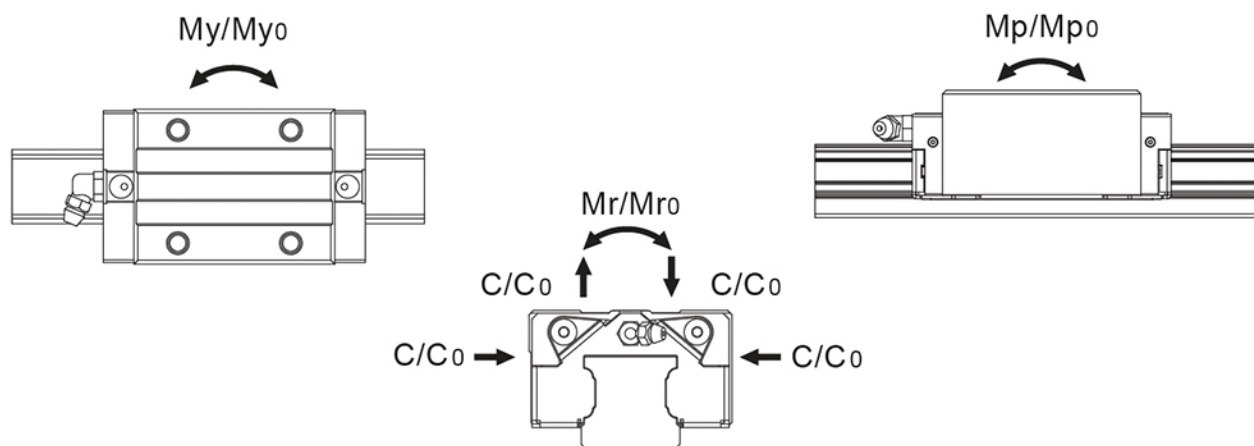
Dimensions in mm.

Lead times in the table below are only indications. Choice of preload, accuracy class and other options will affect lead time. Please contact us for exact delivery time for your request.

For more information about calculation of life, load rating and static moment see Technical information.



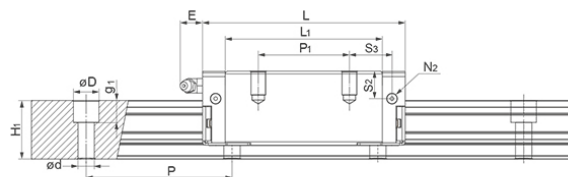
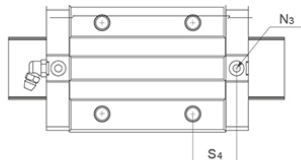
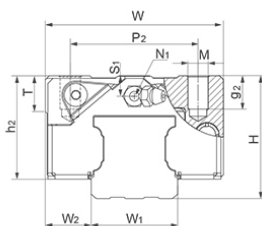
General Data



| Designation | Remark | Dynamic Load Capacity C (N) | Static Load Capacity C0 (N) | Static Moment Mp0 (Nm) | Static Moment Mr0 (Nm) |
|-------------|---------------|-----------------------------|-----------------------------|------------------------|------------------------|
| ARC20ML | - | 20400 | 38500 | 390 | 415 |
| ARC30ML | - | 39600 | 70200 | 950 | 1105 |
| ARC35ML | - | 54700 | 106500 | 1755 | 2185 |
| ARC45ML | - | 89500 | 169100 | 3460 | 4430 |
| ARC55ML | No ball chain | 147000 | 226000 | 5284 | 6472 |

| Designation | Static Moment My0 (Nm) | Dynamic Moment Mr (Nm) | Dynamic Moment Mp (Nm) | Dynamic Moment My (Nm) | Weight Block (g) |
|-------------|------------------------|------------------------|------------------------|------------------------|------------------|
| ARC20ML | 330 | 220 | 207 | 175 | 330 |
| ARC30ML | 950 | 623 | 536 | 536 | 1138 |
| ARC35ML | 1755 | 1122 | 901 | 901 | 1536 |
| ARC45ML | 3460 | 2345 | 1831 | 1831 | 3160 |
| ARC55ML | 5284 | 4210 | 3437 | 3437 | 5083 |

Dimensions



**E: Size 15 delivered with straight standard nipple.
Size 20 – 55 delivered with angled standard nipple.

| Designation | L | H | W | L1 | H1 | h2 | W1 | W2 | S1 |
|-------------|-------|----|-----|-------|------|------|----|------|------|
| ARC20ML | 87.2 | 28 | 42 | 70.2 | 20 | 23 | 20 | 11 | 4 |
| ARC30ML | 118 | 42 | 60 | 94 | 27 | 35.2 | 28 | 16 | 8.7 |
| ARC35ML | 136.6 | 48 | 70 | 111.6 | 32 | 40.4 | 34 | 18 | 8 |
| ARC45ML | 171.5 | 60 | 86 | 138.5 | 39 | 50.7 | 45 | 20.5 | 11.1 |
| ARC55ML | 202 | 70 | 100 | 160 | 45.7 | 58 | 53 | 23.5 | 13.5 |

| Designation | S2 | S3 | S4 | E | T | N1 | N2 | N3 | M x g2 | D x d x g1 |
|-------------|------|------|------|----|----|------------|---------|----|--------|---------------|
| ARC20ML | 7.4 | 15.6 | 16.3 | 10 | 8 | M3x7.5 | M3x5.5 | P4 | M5x7 | 9.5 x 6 x 8.5 |
| ARC30ML | 12 | 21.7 | 21.7 | 12 | 12 | M6x8.5 | M6x5 | P5 | M8x10 | 14 x 9 x 12 |
| ARC35ML | 15 | 25.1 | 25.8 | 12 | 14 | M6x10 | M6x7 | P5 | M8x13 | 14 x 9 x 12 |
| ARC45ML | 18.1 | 35 | 35 | 14 | 14 | PTI/8x12.5 | M6x10.5 | P5 | M10x17 | 20 x 14 x 17 |
| ARC55ML | 23.5 | 41.5 | 40.5 | 12 | 16 | M6x10 | M6x13 | P5 | M12x20 | 24 x 16 x 20 |

| Designation | P1 | P2 | Hole Pitch (P) |
|-------------|----|----|----------------|
| ARC20ML | 45 | 32 | 60 |
| ARC30ML | 60 | 40 | 80 |
| ARC35ML | 72 | 50 | 80 |
| ARC45ML | 80 | 60 | 105 |
| ARC55ML | 95 | 75 | 120 |

ARC MS

Slim, super short block with and without ball chain.

For high load applications or any application where severe chock-loads may occur, the standard version offers better safety margins by its higher static limit (C0). For light to medium loads where a very long lifetime is required, the ball-cage will show superior life span and reliability.

Please note that ball chain versions must never be used for linear speeds exceeding 3 m/s!

Size 15 delivered with straight standard nipple.

Size 20 – 30 delivered with angled standard nipple.

Lubrications injections ports on the block:

N1: Front of the block. All blocks are delivered with front mounted standard grease nipple.

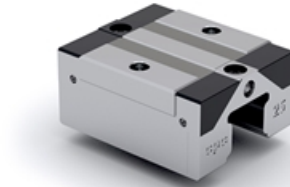
N2: Side of the block. The side lubrication injection port is sealed on delivery to prevent leakage of lubrication.

N3: Top of the block with an O-ring seal. The top lubrication injection port is sealed on delivery to prevent leakage of lubrication.

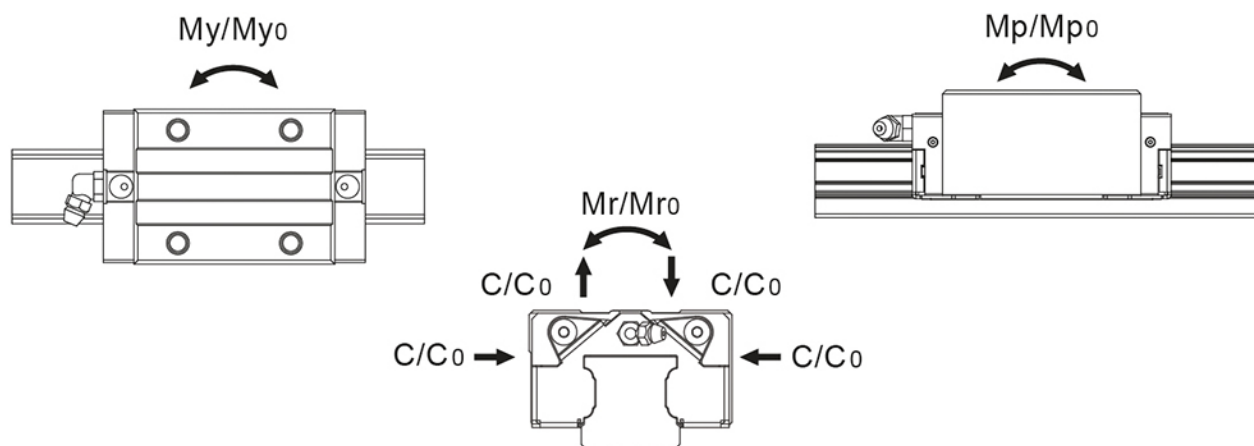
Dimensions in mm.

Lead times in the table below are only indications. Choice of preload, accuracy class and other options will affect lead time. Please contact us for exact delivery time for your request.

For more information about calculation of life, load rating and static moment see Technical information.



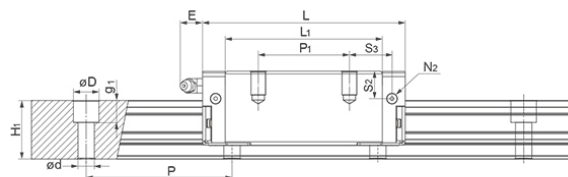
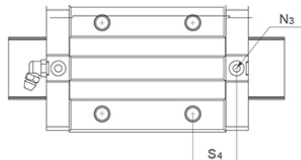
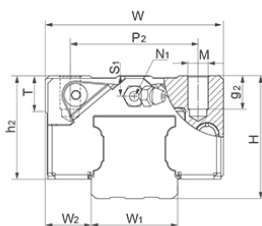
General Data



| Designation | Dynamic Load Capacity C (N) | Static Load Capacity C0 (N) | Static Moment Mp0 (Nm) | Static Moment Mr0 (Nm) | Static Moment My0 (Nm) |
|-------------|-----------------------------|-----------------------------|------------------------|------------------------|------------------------|
| ARC15MS | 7700 | 12100 | 50 | 100 | 50 |
| ARC20MS | 12500 | 19300 | 100 | 205 | 100 |
| ARC25MS | 18200 | 27300 | 160 | 350 | 160 |
| ARC30MS | 23300 | 33100 | 230 | 520 | 230 |

| Designation | Dynamic Moment Mr (Nm) | Dynamic Moment Mp (Nm) | Dynamic Moment My (Nm) | Weight Block (g) |
|-------------|------------------------|------------------------|------------------------|------------------|
| ARC15MS | 64 | 32 | 32 | 106 |
| ARC20MS | 133 | 65 | 65 | 170 |
| ARC25MS | 233 | 107 | 107 | 300 |
| ARC30MS | 366 | 162 | 162 | 560 |

Dimensions



**E: Size 15 delivered with straight standard nipple.
Size 20 – 55 delivered with angled standard nipple.

| Designation | L | H | W | L1 | H1 | h2 | W1 | W2 | S1 |
|-------------|------|----|----|------|----|------|----|------|-----|
| ARC15MS | 41.2 | 24 | 34 | 26 | 15 | 20.7 | 15 | 9.5 | 4.5 |
| ARC20MS | 49.2 | 28 | 42 | 32.2 | 20 | 23 | 20 | 11 | 4 |
| ARC25MS | 57.4 | 33 | 48 | 38.4 | 23 | 27 | 23 | 12.5 | 5 |
| ARC30MS | 68 | 42 | 60 | 44 | 27 | 35.2 | 28 | 16 | 7.5 |

| Designation | S2 | S3 | S4 | E | T | N1 | N2 | N3 | M x g2 | D x d x g1 |
|-------------|-----|------|------|-----|----|--------|--------|----|--------|-----------------|
| ARC15MS | 7.5 | 15.6 | 16.7 | 5.3 | 6 | M3x6.5 | M3x6 | P3 | M4x7 | 7.5 x 4.5 x 5.3 |
| ARC20MS | 7.4 | 19.1 | 19.8 | 10 | 8 | M3x7.5 | M3x5.5 | P4 | M5x7 | 9.5 x 6 x 8.5 |
| ARC25MS | 9.3 | 22.2 | 23.2 | 12 | 8 | M6x7.5 | M3x6.5 | P4 | M6x9 | 11 x 7 x 9 |
| ARC30MS | 12 | 27 | 26.7 | 12 | 12 | M6x8.5 | M6x5 | P5 | M8x10 | 14 x 9 x 12 |

| Designation | P2 | Hole Pitch (P) |
|-------------|----|----------------|
| ARC15MS | 26 | 60 |
| ARC20MS | 32 | 60 |
| ARC25MS | 35 | 60 |
| ARC30MS | 40 | 80 |

ERC MN

Long block with and without ball chain.

For high load applications or any application where severe chock-loads may occur, the standard version offers better safety margins by its higher static limit (C0). For light to medium loads where a very long lifetime is required, the ball-cage will show superior life span and reliability.

Please note that ball chain versions must never be used for linear speeds exceeding 3 m/s!

Size 25 delivered with angled standard nipple.

Lubrications injections ports on the block:

N1: Front of the block. All blocks are delivered with front mounted standard grease nipple.

N2: Side of the block. The side lubrication injection port is sealed on delivery to prevent leakage of lubrication.

N3: Top of the block with an O-ring seal. The top lubrication injection port is sealed on delivery to prevent leakage of lubrication.

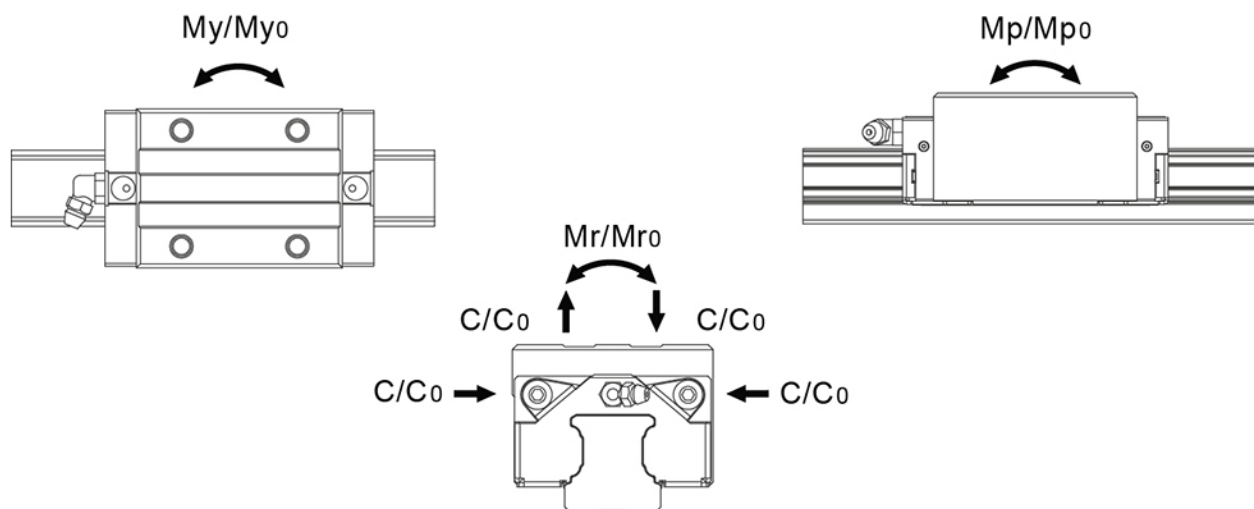
Dimensions in mm.

Lead times in the table below are only indications. Choice of preload, accuracy class and other options will affect lead time. Please contact us for exact delivery time for your request.

For more information about calculation of life, load rating and static moment see Technical information.



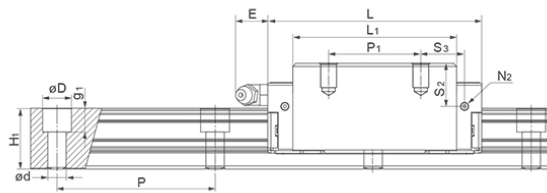
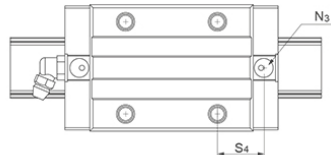
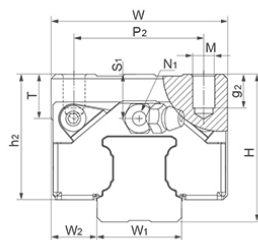
General Data



| Designation | Dynamic Load Capacity C (N) | Static Load Capacity C ₀ (N) | Static Moment M _{p0} (Nm) | Static Moment M _{r0} (Nm) | Static Moment M _{y0} (Nm) |
|-------------|-----------------------------|---|------------------------------------|------------------------------------|------------------------------------|
| ERC25MN | 24800 | 42500 | 385 | 540 | 385 |

| Designation | Dynamic Moment M _r (Nm) | Dynamic Moment M _p (Nm) | Dynamic Moment M _y (Nm) | Weight Block (g) |
|-------------|------------------------------------|------------------------------------|------------------------------------|------------------|
| ERC25MN | 315 | 225 | 225 | 470 |

Dimensions



**E: Size 15 delivered with straight standard nipple.
Size 20 – 55 delivered with angled standard nipple.

| Designation | L | H | W | L1 | H1 | h2 | W1 | W2 | S1 |
|-------------|------|----|----|------|----|----|----|------|----|
| ERC25MN | 81.2 | 36 | 48 | 62.2 | 23 | 30 | 23 | 12.5 | 8 |

| Designation | S2 | S3 | S4 | E | T | N1 | N2 | N3 | M x g2 | D x d x g1 |
|-------------|------|------|------|----|---|--------|--------|----|--------|------------|
| ERC25MN | 12.3 | 16.6 | 17.6 | 12 | 8 | M6x7.5 | M3x6.5 | P4 | M6x9 | 11 x 7 x 9 |

| Designation | P1 | P2 | Hole Pitch (P) |
|-------------|----|----|----------------|
| ERC25MN | 35 | 35 | 60 |

ERC ML

Slim, long block with and without ball chain.

For high load applications or any application where severe chock-loads may occur, the standard version offers better safety margins by its higher static limit (C0). For light to medium loads where a very long lifetime is required, the ball-cage will show superior life span and reliability.

Please note that ball chain versions must never be used for linear speeds exceeding 3 m/s!

Size 25 delivered with angled standard nipple.

Lubrications injections ports on the block:

N1: Front of the block. All blocks are delivered with front mounted standard grease nipple.

N2: Side of the block. The side lubrication injection port is sealed on delivery to prevent leakage of lubrication.

N3: Top of the block with an O-ring seal. The top lubrication injection port is sealed on delivery to prevent leakage of lubrication.

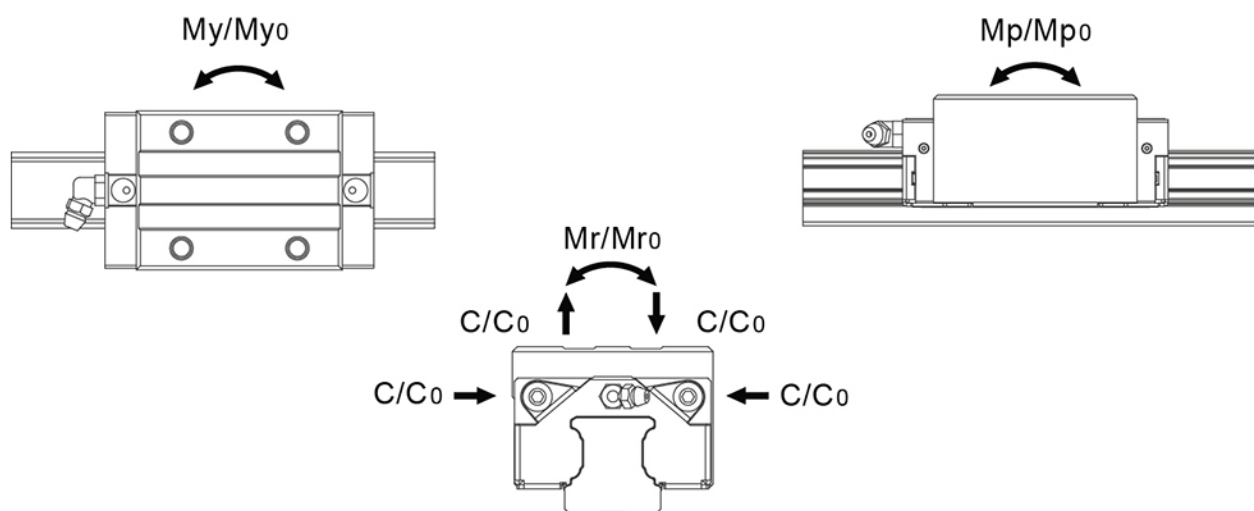
Dimensions in mm.

Lead times in the table below are only indications. Choice of preload, accuracy class and other options will affect lead time. Please contact us for exact delivery time for your request.

For more information about calculation of life, load rating and static moment see Technical information.



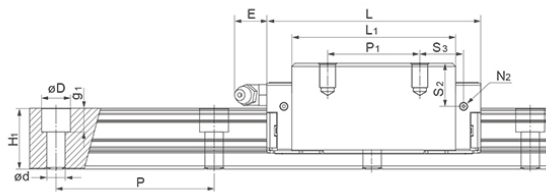
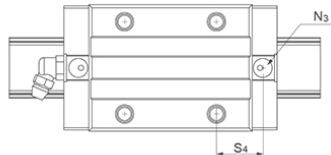
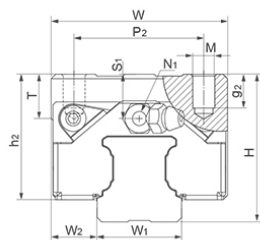
General Data



| Designation | Dynamic Load Capacity C (N) | Static Load Capacity C ₀ (N) | Static Moment M _{p0} (Nm) | Static Moment M _{r0} (Nm) | Static Moment M _{y0} (Nm) |
|-------------|-----------------------------|---|------------------------------------|------------------------------------|------------------------------------|
| ERC25ML | 30700 | 57700 | 710 | 735 | 710 |

| Designation | Dynamic Moment M _r (Nm) | Dynamic Moment M _p (Nm) | Dynamic Moment M _y (Nm) | Weight Block (g) |
|-------------|------------------------------------|------------------------------------|------------------------------------|------------------|
| ERC25ML | 391 | 378 | 378 | 610 |

Dimensions



**E: Size 15 delivered with straight standard nipple.
Size 20 – 55 delivered with angled standard nipple.

| Designation | L | H | W | L1 | H1 | h2 | W1 | W2 | S1 |
|-------------|-----|----|----|----|----|----|----|------|----|
| ERC25ML | 105 | 36 | 48 | 86 | 23 | 30 | 23 | 12.5 | 8 |

| Designation | S2 | S3 | S4 | E | T | N1 | N2 | N3 | M x g2 | D x d x g1 |
|-------------|------|----|----|----|---|--------|--------|----|--------|------------|
| ERC25ML | 12.3 | 21 | 22 | 12 | 8 | M6x7.5 | M3x6.5 | P4 | M6x9 | 11 x 7 x 9 |

| Designation | P1 | P2 | Hole Pitch (P) |
|-------------|----|----|----------------|
| ERC25ML | 50 | 35 | 60 |

HRC Rail

Counterbore from above.

Cut to length acc. to request.

Rails can be joint together for extra long lengths.

Contact Rollco for more information.

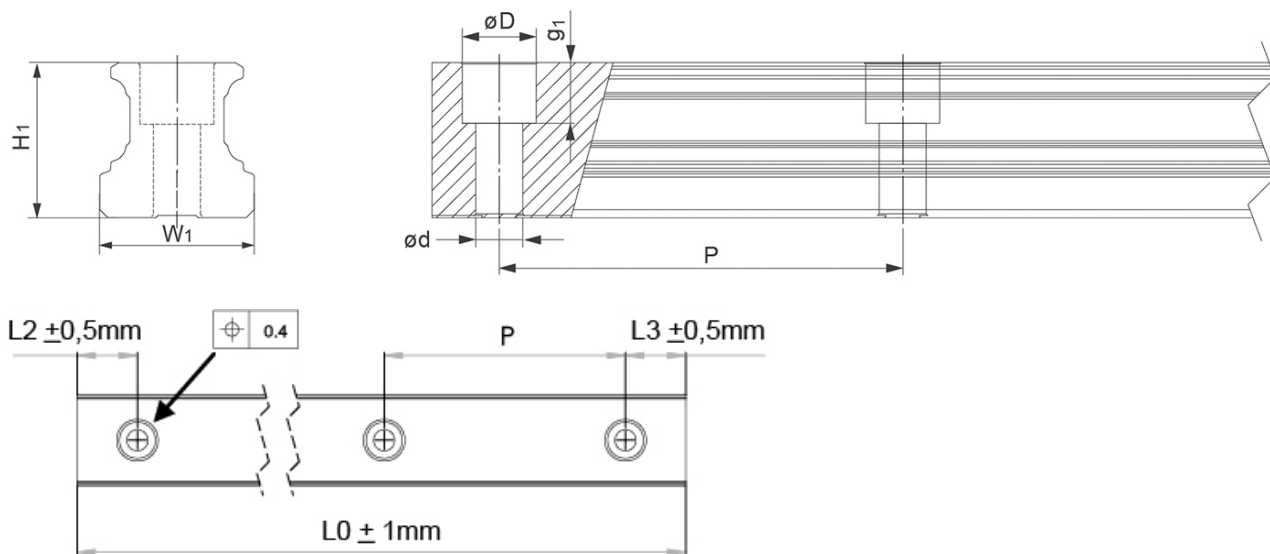
Dimensions in mm.



General Data

| Designation | Length (mm) | Weight Rail (g/m) |
|-------------|-------------|-------------------|
| HRC15 | 4000 | 1290 |
| HRC20 | 4000 | 2280 |
| HRC25 | 4000 | 3020 |
| HRC30 | 4000 | 4380 |
| HRC35 | 4000 | 6790 |
| HRC45 | 4000 | 10530 |
| HRC55 | 4000 | 14000 |

Dimensions

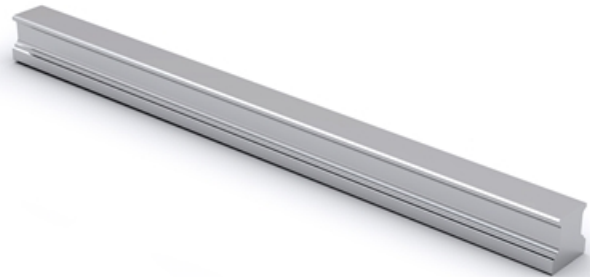


| Designation | H1 | W1 | D x d x g1 | Hole Pitch (P) |
|-------------|------|----|-----------------|----------------|
| HRC15 | 15 | 15 | 7.5 x 4.5 x 5.3 | 60 |
| HRC20 | 20 | 20 | 9.5 x 6 x 8.5 | 60 |
| HRC25 | 23 | 23 | 11 x 7 x 9 | 60 |
| HRC30 | 27 | 28 | 14 x 9 x 12 | 80 |
| HRC35 | 32 | 34 | 14 x 9 x 12 | 80 |
| HRC45 | 39 | 45 | 20 x 14 x 17 | 105 |
| HRC55 | 45.7 | 53 | 24 x 16 x 20 | 120 |

HRU Rail

Tapped from the bottom.
 Cut to length acc. to request.
 Rails can be joint together for extra long lengths.
 Contact Rollco for more information.

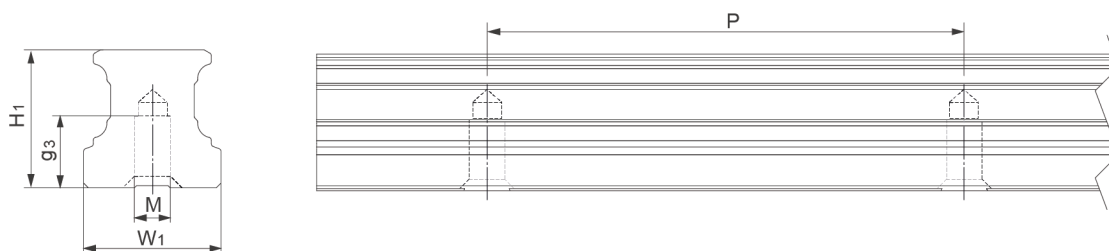
Dimensions in mm.



General Data

| Designation | Length (mm) | Weight Rail (g/m) |
|-------------|-------------|-------------------|
| HRU15 | 4000 | 1290 |
| HRU20 | 4000 | 2280 |
| HRU25 | 4000 | 3020 |
| HRU30 | 4000 | 4380 |
| HRU35 | 4000 | 6790 |
| HRU45 | 4000 | 10530 |
| HRU55 | 4000 | 14000 |

Dimensions



| Designation | H1 | W1 | M x g3 | Hole Pitch (P) |
|--------------|------|----|----------|----------------|
| HRU15 | 15 | 15 | M5 x 8 | 60 |
| HRU20 | 20 | 20 | M6 x 10 | 60 |
| HRU25 | 23 | 23 | M6 x 12 | 60 |
| HRU30 | 27 | 28 | M8 x 15 | 80 |
| HRU35 | 32 | 34 | M8 x 15 | 80 |
| HRU45 | 39 | 45 | M12 x 19 | 105 |
| HRU55 | 45.7 | 53 | M14 x 24 | 120 |

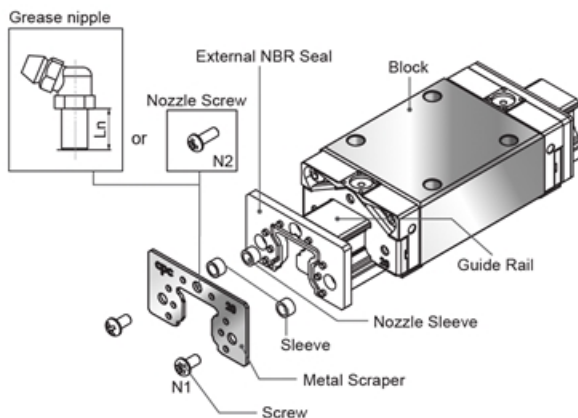
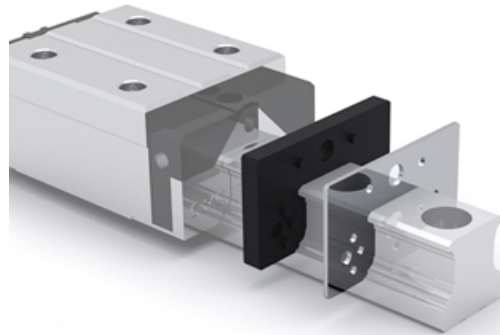
NBR Seal / Metal Scraper

External seal with metal scraper, available for applications under harsh environments. Dustproof solution for milling machining, machinery processing, wood-working or other outdoor applications. It demonstrates high dust-proof ability to prevent contamination from fine dust, iron scrap or dirt.

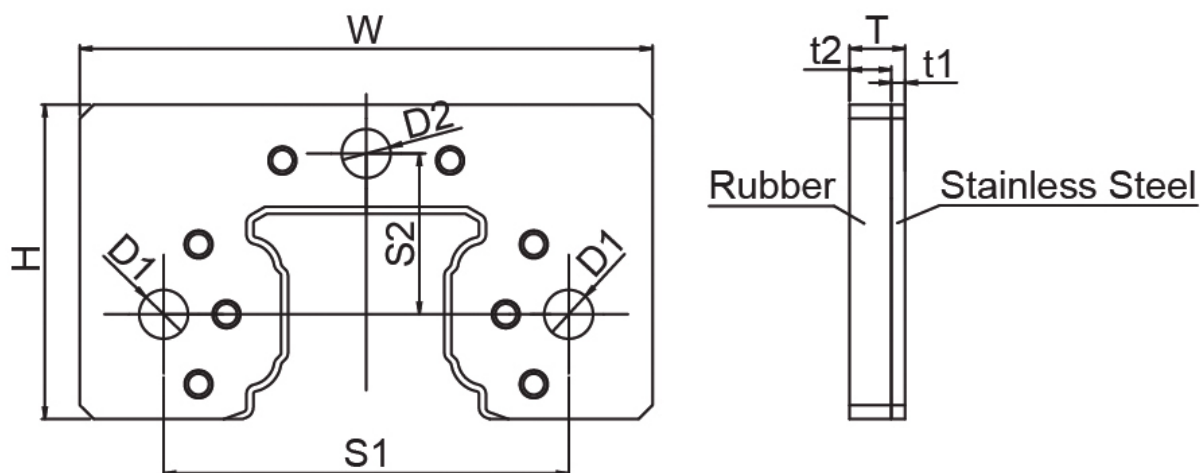
Installation

1. Set block on the rail before installing external NBR seal.
2. Make sure rubber part is fitted in the sleeve. If rubber parts fall off, please set the sleeve to the correspondent bore.
3. Overlap rubber part and metal scraper with the corresponding salient point and the bore. cpc logo must be facing outward.
4. Slide the external NBR seal into rail from two sides and closely connect with the block.
5. Fasten screw into the correspondence bore. Make sure the seal is centre aligned with the rail while fastening. Do not make metal scraper contact with guide rail.

Dimensions in mm.



Dimensions



| Designation | W | H | T | D1 | D2 | N1 | S1 | S2 | N2 |
|-------------|----|------|-----|-----|-----|---------|------|------|---------|
| SN15 | 33 | 20.3 | 4 | 3.5 | 3.5 | M3x0.35 | 25 | 10.2 | M3x0.5 |
| SN20 | 41 | 22.5 | 4 | 3.5 | 3.5 | M3x0.35 | 29 | 11.5 | M3x0.5 |
| SN25 | 47 | 26.5 | 5.2 | 4.5 | 6.5 | M4x0.5 | 36.5 | 13.5 | M6x0.75 |
| SN30 | 58 | 34.2 | 6 | 4.5 | 6.5 | M4x0.5 | 42.5 | 17.5 | M6x0.75 |
| SN35 | 68 | 39.3 | 6 | 4.5 | 6.5 | M4x0.5 | 50 | 20.5 | M6x0.75 |
| SN45 | 84 | 49.6 | 6 | 4.5 | 10 | M4x0.5 | 65 | 24.9 | PT1/8 |
| SN55 | 98 | 57 | 6 | 5.5 | 6.5 | M5x0.5 | 73 | 28 | M6x0.75 |

| Designation | Ln | t1 | t2 |
|-------------|----|-----|-----|
| SN15 | 9 | 1 | 3 |
| SN20 | 9 | 1 | 3 |
| SN25 | 12 | 1.2 | 4 |
| SN30 | 12 | 1.5 | 4.5 |
| SN35 | 12 | 1.5 | 4.5 |
| SN45 | 15 | 1.5 | 4.5 |
| SN55 | 16 | 1.5 | 4.5 |

HK Clamping Element

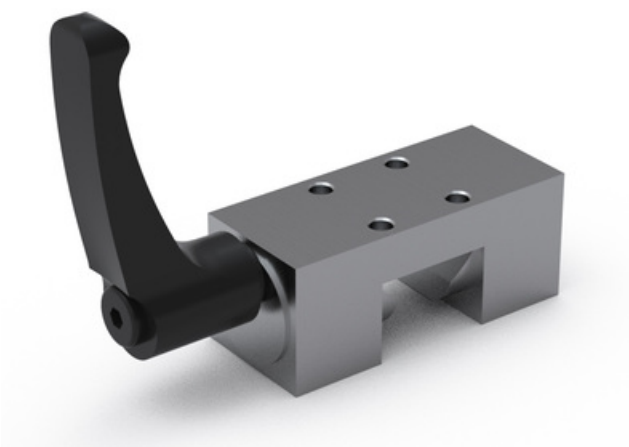
Clamping elements are designed to be used when holding a position on the rail.

Note! As of April 2023, MC Clamping Element for Linear Rail HRC/ERC/ARC are replaced with the new HK Clamping Elements. Please, download the new CAD files below and see document "New HK Clamping Elements" for more information.

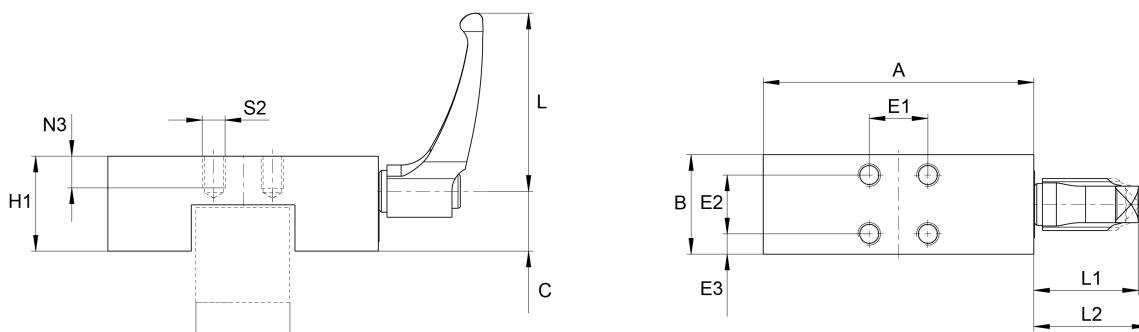
Because of the height difference of different rail guide blocks and to ensure the proper function of the HK Clamping Elements, the use of adapter plates is sometimes needed. See document "Selection of Clamping Elements" for individual block types and whether an adapter plate is needed.

Compatible with Linear Rail HRC/ARC/ERC only.

Dimensions in mm.



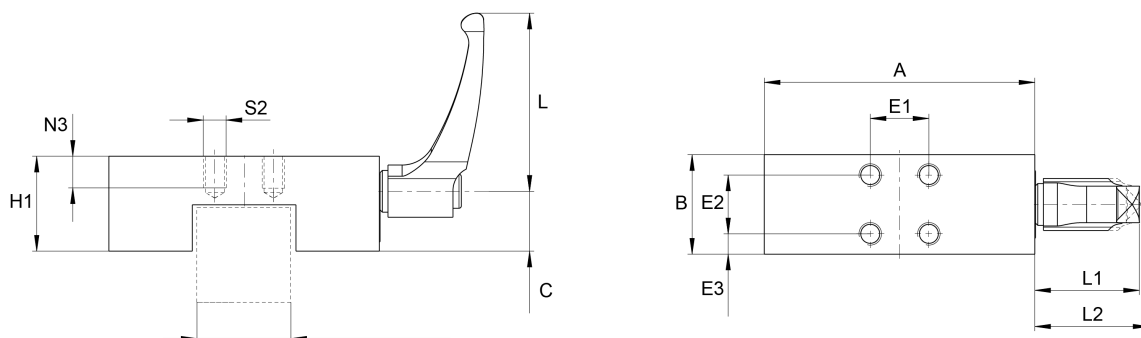
General Data



| Designation | Remark | Holding Force (N) | Tightening Torque (Nm) | Weight (kg) | Max. Length Clamping |
|-------------|--|-------------------|------------------------|-------------|----------------------|
| HK1514D | Use Distance Plate PHK15-4 for HRC15MN and HRC15ML. | 1200 | 5.00 | 0.14 | 24 |
| HK2005KN | - | 750 | 4.00 | 0.14 | 24 |
| HK2005KR | - | 1200 | 5.00 | 0.22 | 24 |
| HK2505KN | - | 750 | 4.00 | 0.14 | 24 |
| HK2505KR | Use Distance Plate PHK25-4 for HRC25MN and HRC25ML. | 1200 | 7.00 | 0.39 | 30 |
| HK3002K | Use Distance Plate PHK30-3 for HRC30MN and HRC30ML. | 2000 | 15.00 | 0.77 | 39 |
| HK3505KR | Use Distance Plate PMK35-7 for HRC35MN and HRC35ML. | 2000 | 15.00 | 0.96 | 39 |
| HK4501A | Use Distance Plate PHK45-10 for HRC45MN and HRC45ML. | 2000 | 15.00 | 1.4 | 44 |

| Designation | Size |
|-------------|------|
| HK1514D | 15 |
| HK2005KN | 20 |
| HK2005KR | 20 |
| HK2505KN | 25 |
| HK2505KR | 25 |
| HK3002K | 30 |
| HK3505KR | 35 |
| HK4501A | 45 |

Dimensions



| Designation | A | C | B | H1 | N3 | S2 | E1 | E2 | E3 |
|-------------|-----|------|----|------|----|-----|----|----|-----|
| HK1514D | 47 | 13.3 | 24 | 17.5 | 5 | M4 | 17 | 17 | 4 |
| HK2005KN | 42 | 14.3 | 24 | 18 | 5 | M5 | 15 | 15 | 4.5 |
| HK2005KR | 60 | 17.5 | 24 | 23 | 6 | M5 | 15 | 15 | 4.5 |
| HK2505KN | 42 | 14.3 | 24 | 18 | 5 | M5 | 15 | 15 | 4.5 |
| HK2505KR | 70 | 22.3 | 30 | 29 | 7 | M6 | 20 | 20 | 5 |
| HK3002K | 90 | 23.6 | 39 | 32 | 8 | M6 | 22 | 22 | 8.5 |
| HK3505KR | 100 | 31 | 39 | 41 | 10 | M8 | 24 | 24 | 7.5 |
| HK4501A | 120 | 32.6 | 44 | 44 | 14 | M10 | 26 | 26 | 9 |

| Designation | L | L1 | L2 |
|-------------|----|------|------|
| HK1514D | 44 | 30.5 | 33.5 |
| HK2005KN | 44 | 30.5 | 33.5 |
| HK2005KR | 44 | 30.5 | 33.5 |
| HK2505KN | 44 | 30.5 | 33.5 |
| HK2505KR | 63 | 38.5 | 41.5 |
| HK3002K | 78 | 46.5 | 50.5 |
| HK3505KR | 78 | 46.5 | 50.5 |
| HK4501A | 78 | 46.5 | 50.5 |

Adapter Plate for HK Clamping Element

Because of the height difference of different rail guide blocks and to ensure the proper function of the HK Clamping Elements, the use of adapter plates is sometimes needed. See document "Selection of Clamping Elements" for individual block types and whether an adapter plate is needed.

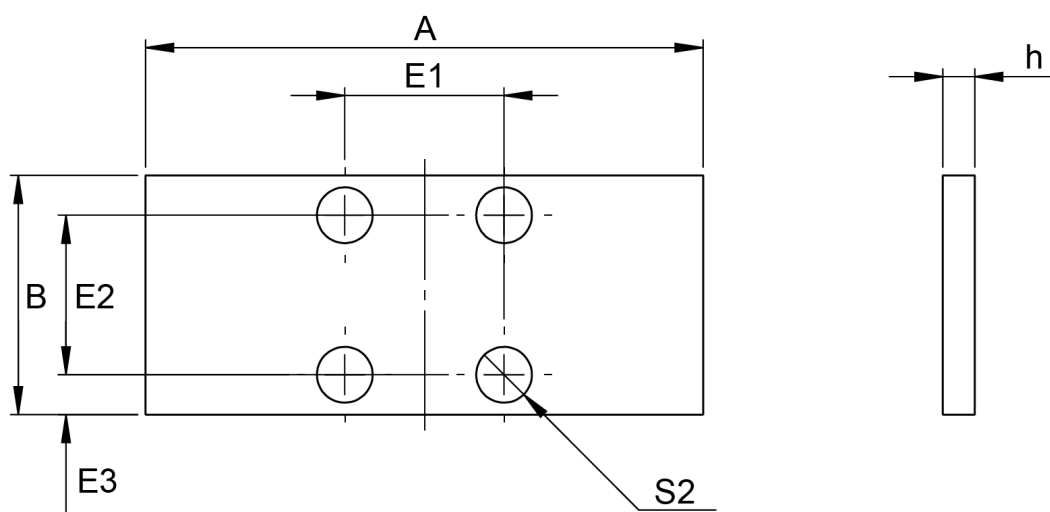
Dimensions in mm.



General Data

| Designation | Weight (kg) |
|-------------|-------------|
| PHK15-4 | 0.033 |
| PHK25-4 | 0.062 |
| PHK30-3 | 0.08 |
| PMK35-7 | 0.2 |
| PHK45-10 | 0.39 |

Dimensions



| Designation | A | B | S2 | E1 | E2 | E3 | h |
|-------------|-----|----|-----|----|----|-----|----|
| PHK15-4 | 47 | 24 | M4 | 17 | 17 | 3.5 | 4 |
| PHK25-4 | 70 | 30 | M6 | 20 | 20 | 5 | 4 |
| PHK30-3 | 90 | 39 | M6 | 22 | 22 | 8.5 | 3 |
| PMK35-7 | 100 | 39 | M8 | 24 | 24 | 7.5 | 7 |
| PHK45-10 | 120 | 44 | M10 | 26 | 26 | 9 | 10 |

MK Clamping Element

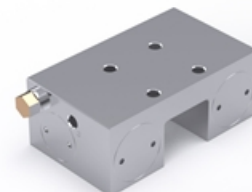
Pneumatic clamping element, designed to be used for holding a position when using linear rail guides.
Energize to close (NO).

For other types contact Rollco.

Compatible with Linear Rail HRC/ARC/ERC only.

Dimensions in mm.

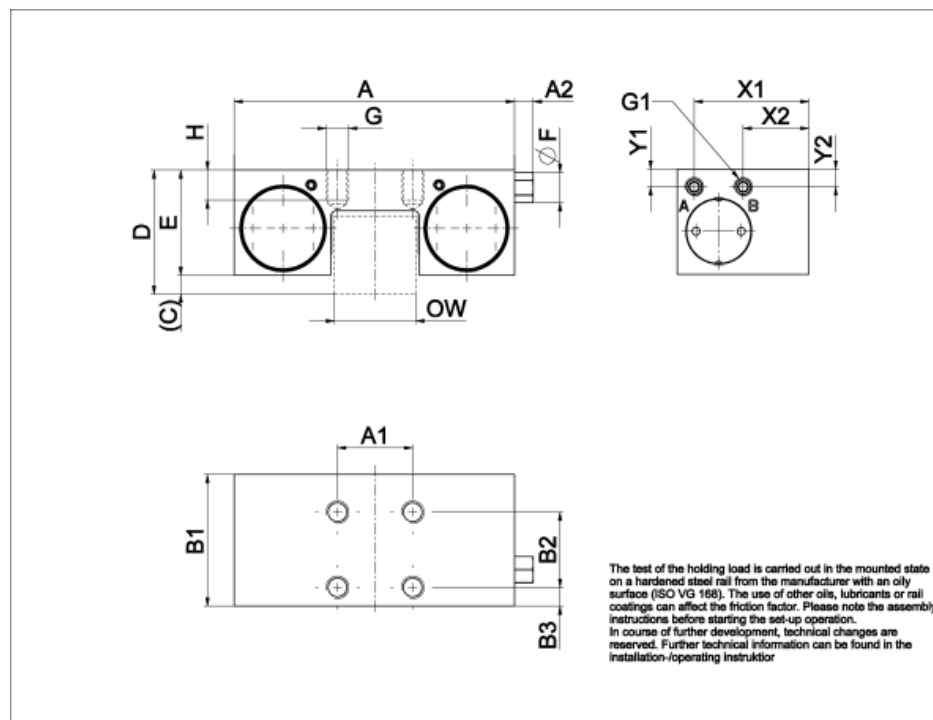
Temperature range (°C): 0 - 70



General Data

| Designation | Compatible with | Fixing force (N) | Operating pressure (bar) | Max. Operating Pressure (bar) | Installation way |
|----------------|-----------------|------------------|--------------------------|-------------------------------|------------------|
| MK1514D | HRC15, HRU15 | 650 | 6 | 6.5 | from above |
| MK2014D | HRC20, HRU20 | 700 | 6 | 6.5 | from above |
| MK2514D | HRC25, HRU25 | 1200 | 6 | 6.5 | from above |
| MK3005A | HRC30, HRU30 | 1750 | 6 | 6.5 | from above |
| MK3514D | HRC35, HRU35 | 2000 | 6 | 6.5 | from above |
| MK4514D | HRC45, HRU45 | 2250 | 6 | 6.5 | from above |

Dimensions



| Designation | OW | D | T | A | C | X | E | A1 | A2 |
|-------------|-------|----|---|-----|------|----|------|----|----|
| MK1514D | 13 | 24 | 0 | 55 | 2.5 | 24 | 21.5 | 15 | 5 |
| MK2014D | 16.75 | 30 | 2 | 66 | 3.5 | 28 | 24.5 | 20 | 6 |
| MK2514D | 19.75 | 36 | 0 | 75 | 8 | 36 | 28 | 20 | 5 |
| MK3005A | 24.6 | 42 | 0 | 90 | 7 | 42 | 35 | 22 | 5 |
| MK3514D | 31.8 | 48 | 0 | 100 | 11.5 | 48 | 36.5 | 24 | 5 |
| MK4514D | 42 | 60 | 0 | 120 | 16.5 | 60 | 43.5 | 26 | 5 |

| Designation | B1 | B2 | B3 | G | H | F | W1 (SW air filter) | G1 (air connection) | X1 (air filter horizontal / mm) | Y1 (air filter vertical / mm) |
|-------------|----|----|------|-----|-----|---|--------------------|---------------------|---------------------------------|-------------------------------|
| MK1514D | 39 | 15 | 15.5 | M4 | 4.5 | 8 | 7 | M5 | 34 | 17 |
| MK2014D | 39 | 20 | 10 | M5 | 4.2 | 8 | 7 | M5 | 35 | 21 |
| MK2514D | 35 | 20 | 5 | M6 | 8 | 8 | 7 | M5 | 30.5 | 4.7 |
| MK3005A | 39 | 22 | 8.5 | M8 | 7 | 8 | 7 | M5 | 24.5 | 5.2 |
| MK3514D | 39 | 24 | 7.5 | M10 | 10 | 8 | 7 | M5 | 20 | 5.2 |
| MK4514D | 49 | 26 | 11.5 | M10 | 15 | 8 | 7 | M5 | 29.5 | 11 |

| Designation | X2 (air connection horizontal / mm) | Y2 (air connection vertical / mm) |
|-------------|-------------------------------------|-----------------------------------|
| MK1514D | 34 | 6.1 |
| MK2014D | 34 | 5.2 |
| MK2514D | 17.5 | 4.7 |
| MK3005A | 14.5 | 5.2 |
| MK3514D | 9 | 5.2 |

Dimensions

| Designation | X2 (air connection horizontal / mm) | Y2 (air connection vertical / mm) |
|-------------|-------------------------------------|-----------------------------------|
| MK4514D | 19.5 | 11 |

MKS Clamping Element

Pneumatic clamping element, designed to be used for holding a position when using linear rail guides. Energize to open (NC).

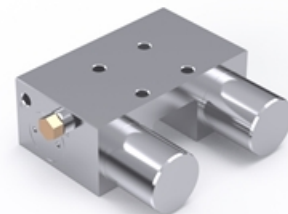
The holding forces may be increased by means of a PLUS connection, provided that this is listed under the technical data, by using the pneumatic pressure support of the spring accumulator.

More types are available, contact Rollco for further information.

Compatible with Linear Rail HRC/ARC/ERC only.

Dimensions in mm.

Temperature range (°C): 0 - 70

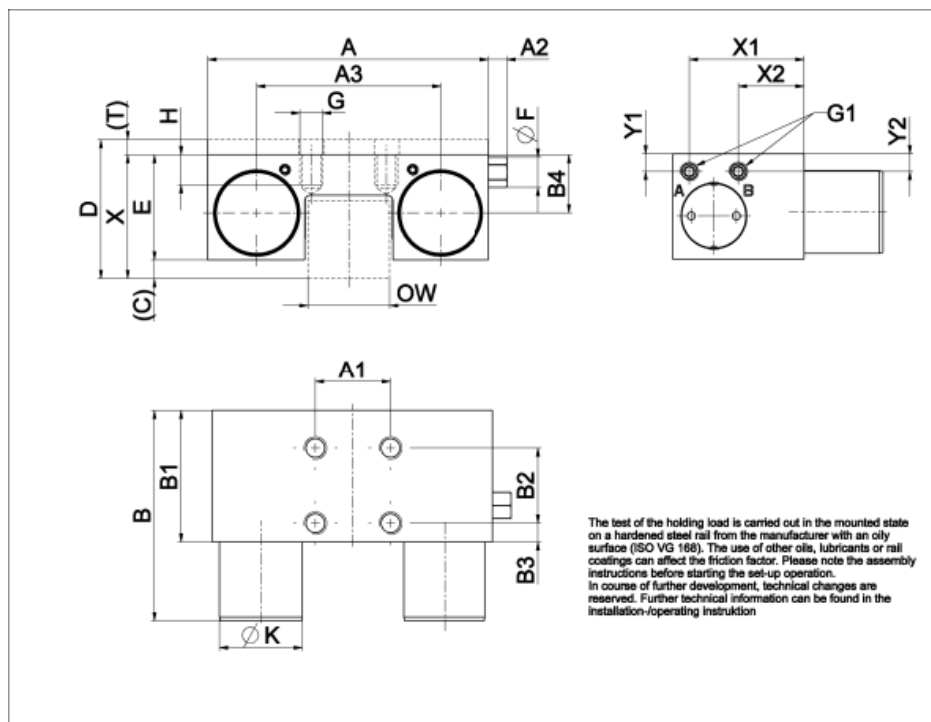


General Data

| Designation | Compatible with | Fixing force (N) | Min. operating pressure (bar) | Max. Operating Pressure (bar) | Installation way |
|-----------------|-----------------|------------------|-------------------------------|-------------------------------|------------------|
| MKS1514D | HRC15, HRU15 | 400 | 5.5 | 6.5 | from above |
| MKS2014D | HRC20, HRU20 | 400 | 5.5 | 6.5 | from above |
| MKS2514D | HRC25, HRU25 | 750 | 5.5 | 6.5 | from above |
| MKS3005A | HRC30, HRU30 | 1050 | 5.5 | 6.5 | from above |
| MKS3514D | HRC35, HRU35 | 1250 | 5.5 | 6.5 | from above |
| MKS4514D | HRC45, HRU45 | 1450 | 5.5 | 6.5 | from above |

| Designation | PLUS-connection |
|-----------------|-----------------|
| MKS1514D | not possible |
| MKS2014D | not possible |
| MKS2514D | not possible |
| MKS3005A | not possible |
| MKS3514D | not possible |
| MKS4514D | not possible |

Dimensions



| Designation | OW | D | T | A | C | X | E | A1 | A2 |
|-------------|-------|----|---|-----|------|----|------|----|----|
| MKS1514D | 13 | 24 | 0 | 55 | 2.5 | 24 | 21.5 | 15 | 5 |
| MKS2014D | 16.75 | 30 | 2 | 66 | 3.5 | 28 | 24.5 | 20 | 6 |
| MKS2514D | 19.75 | 36 | 0 | 75 | 8 | 36 | 28 | 20 | 5 |
| MKS3005A | 24.6 | 42 | 0 | 90 | 7 | 42 | 35 | 22 | 5 |
| MKS3514D | 31.8 | 48 | 0 | 100 | 11.5 | 48 | 36.5 | 24 | 5 |
| MKS4514D | 42 | 60 | 0 | 120 | 16.5 | 60 | 43.5 | 26 | 5 |

| Designation | A3 | B | B1 | B2 | B3 | B4 | G | H | F | G1 (air connection) |
|-------------|------|----|----|----|------|------|-----|-----|---|---------------------|
| MKS1514D | 34 | 58 | 39 | 15 | 15.5 | 12 | M4 | 4.5 | 8 | M5 |
| MKS2014D | 39 | 61 | 39 | 20 | 10 | 13.4 | M5 | 4.2 | 8 | M5 |
| MKS2514D | 49 | 56 | 35 | 20 | 5 | 15.5 | M6 | 8 | 8 | M5 |
| MKS3005A | 58 | 68 | 39 | 22 | 8.5 | 20.5 | M8 | 7 | 8 | M5 |
| MKS3514D | 68 | 67 | 39 | 24 | 7.5 | 20.5 | M8 | 10 | 8 | M5 |
| MKS4514D | 78.8 | 82 | 49 | 26 | 11.5 | 26.8 | M10 | 15 | 8 | M5 |

| Designation | X1 (air filter horizontal / mm) | Y1 (air filter vertical / mm) | X2 (air connection horizontal / mm) | Y2 (air connection vertical / mm) | K |
|-------------|---------------------------------|-------------------------------|-------------------------------------|-----------------------------------|----|
| MKS1514D | 34 | 17 | 34 | 5.9 | 16 |
| MKS2014D | 35 | 21 | 34 | 5.2 | 20 |
| MKS2514D | 30.5 | 4.7 | 17.5 | 4.7 | 22 |
| MKS3005A | 24.5 | 5.2 | 14.5 | 5.2 | 25 |
| MKS3514D | 20 | 5.2 | 9 | 5.2 | 28 |
| MKS4514D | 29.5 | 11 | 19.5 | 11 | 30 |

Metal-Plastic Cap

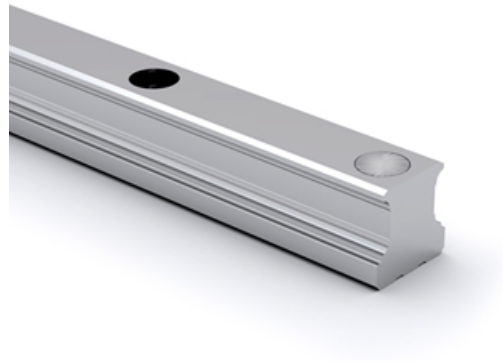
The top of the cap is made of stainless steel and prevents dirt or scrap from piling up in the bolt hole, which may affect the end seal function.

The lower part of the cap is made of plastic and can be installed directly on the standard rail. There is no need to conduct other fine slot milling for bolt-hole.

The bolt-hole chamfer for standard rail is C0.2 mm. A non-bolt-hole chamfer rail is available on request for absolutely dust-proof applications. Please contact us for more information.

The cap is designed with supporting block to prop up the cap, fix the screw stably and prevent it from sinking.

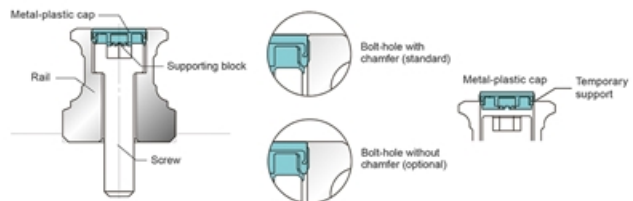
Dimensions in mm.



Cap before hammering
(Plastic support)



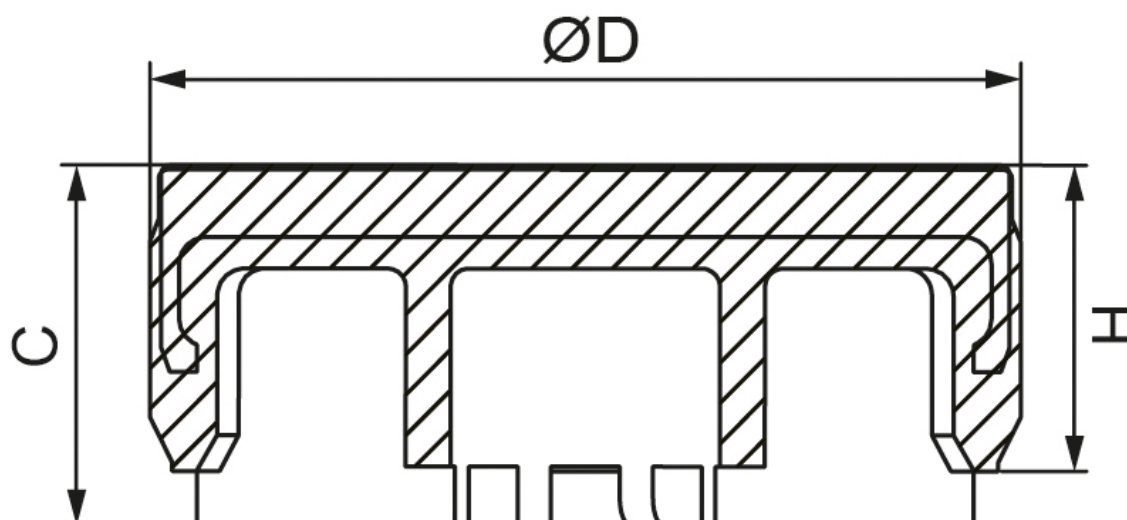
Plastic support after hammering
(8 supporting block become deformed,
and fit with the screw.)



General Data

| Designation | Compatible with | Screw Type |
|----------------|---------------------------|------------|
| MPC-A4 | AR15 , WRC21/15, WRC27/20 | M4 |
| MPC-A5 | AR20 | M5 |
| MPC-A6 | AR25 | M6 |
| MPC-A8 | AR30 , AR35 | M8 |
| MPC-A12 | AR45 | M12 |
| MPC-A14 | AR55 | M14 |

Dimensions



| Designation | H | C | D |
|----------------|-----|-----|------|
| MPC-A4 | 1.7 | 2.0 | 7.7 |
| MPC-A5 | 3.4 | 4.0 | 9.7 |
| MPC-A6 | 2.9 | 3.5 | 11.3 |
| MPC-A8 | 3.9 | 4.5 | 14.3 |
| MPC-A12 | 5.0 | 5.6 | 20.4 |
| MPC-A14 | 6.0 | 6.5 | 24.4 |

RA Grease

NLGI grade 1.5

Clear grease based on synthetic oils and PTFE. Will fulfil all severe specifications from bearing manufacturers, industrial applications and vehicle producers. Very suitable for use where long service life is required and desired. The specific rheological properties of the lubricant will give very low good flow properties of the grease at extremely low temperatures, at the same time the high film strength and thickness will guarantee lubrication also at elevated temperatures. The type of PTFE used will adhere strongly to all surfaces lubricated and give a very low friction coefficient. The grease is water resistant, withstands oxidation, has very good mechanical stability, is completely non-toxic and provides a very wide application temperature range.

Temperature: -40 to +260 °C (application range)

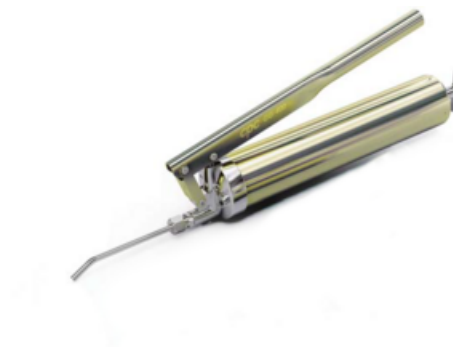


General Data

| Designation | Remark | Colour | Weight (g) |
|--------------------|-------------------|-------------------|------------|
| RA Grease NLGI 1.5 | Cartridge package | Translucent white | 400 g |

Main body of Grease Gun

Option for Main body of Grease Gun: GG-400 for 400g volume grease pack.

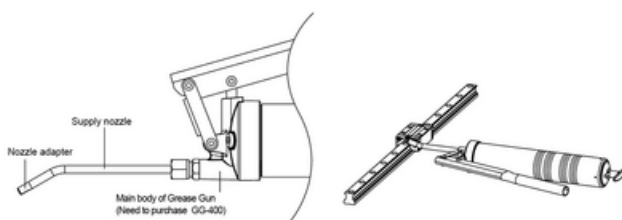


General Data

| Designation | Pressure | Output Volume | Grease |
|---------------|----------|--------------------|--|
| GG-400 | 62Mpa | 1.0~1.2 c.c/stroke | Suitable for 400g volume grease pack or bulk loading |

Lubrication kit GP-PT1/8-01

The Lubrication Kit is with a supply nozzle (GT-1/8-M5) and three kinds of different nozzle adaptors (GH-M5-MR, GH-M5-06, GH-M5-08). The supply nozzle can be mount on the main body of common manual or pneumatic grease gun with PT1/8 tapped connector available on the market.



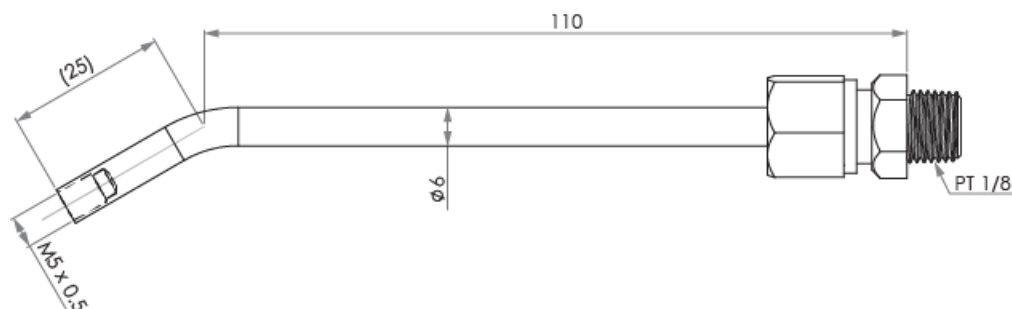
Nozzle adapter

| Type | Dimension | Grease nipple | | Unit: mm |
|----------|-----------|---|--|----------|
| GH-M5-MR | | MR series Miniature linear guide size MR-15M - MR-15W MR-12M - MR-12W | | |
| GH-M5-06 | | A-M3 A-M3-L | | |
| | | B-M3 B-M3-L | | |
| GH-M5-08 | | A-M6 A-M6-L A-M6-XL | | |
| | | B-M6 B-M6-L B-M6-XL | | |
| | | B-PT1/8 B-PT1/8L | | |

Port sizes for grease nipple

| Type | Port size | | Top o-ring size |
|----------------|-----------|------|-----------------|
| | Front | Side | |
| HRC/ARC 15 | M3 | M3 | P3 |
| HRC/ARC 20 | M3 | M3 | P4 |
| HRC/ARC/ERC 25 | M6 | M3 | P4 |
| HRC/ARC 30 | M6 | M6 | P5 |
| HRC/ARC 35 | M6 | M6 | P5 |
| HRC/ARC 45 | PT1/8 | M6 | P5 |
| HRC/ARC 55 | M6 | M6 | P5 |
| WRC 21/15 | M3 | M3 | P3 |
| WRC 27/20 | M3 | M3 | P4 |

General Data



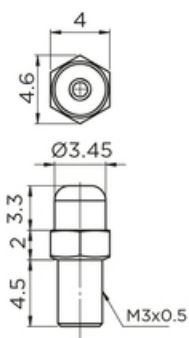
| Designation | Description |
|-----------------------------|---|
| Lubrication kit GP-PT1/8-01 | Nozzle adaptors (GH-M5-MR, GH-M5-06, GH-M5-08) included |

Standard grease nipple

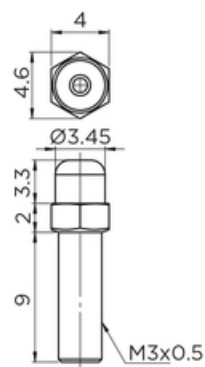
When external NBR seal is chosen (SN), please use long type grease nipple.



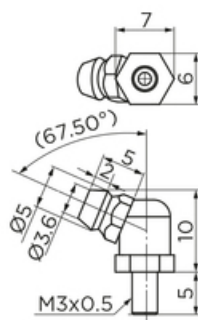
A-M3



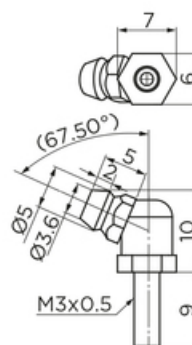
A-M3-L



B-M3

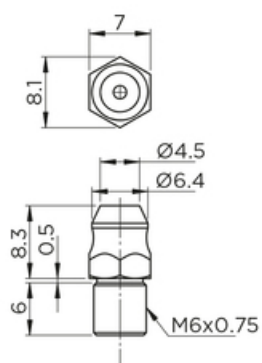


B-M3-L

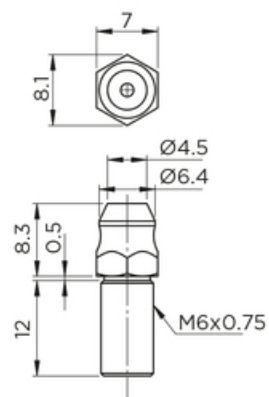


Standard grease nipple

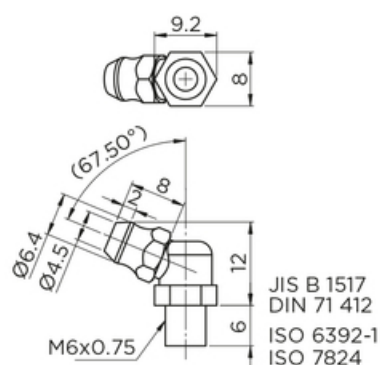
A-M6



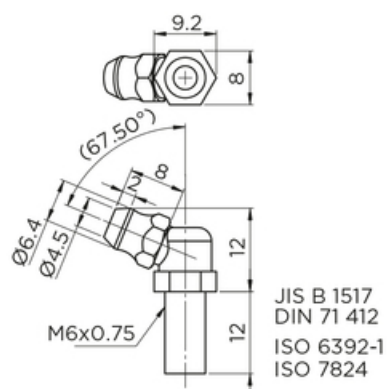
A-M6-L



B-M6

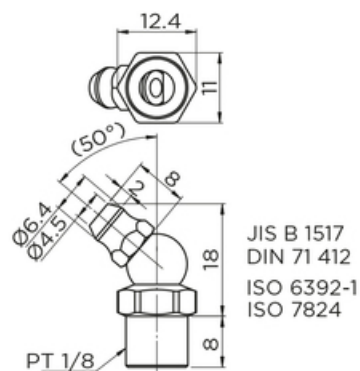


B-M6-L

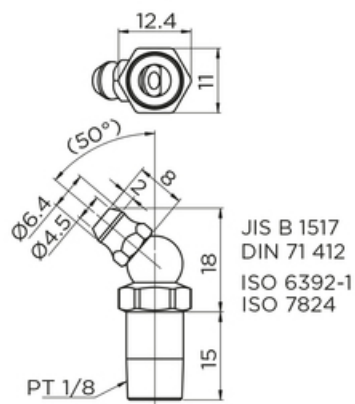


Standard grease nipple

B-PT1/8



B-PT1/8-L



Port sizes for grease nipple

| Type | Port size | | Top o-ring size |
|----------------|-----------|------|-----------------|
| | Front | Side | |
| HRC/ARC 15 | M3 | M3 | P3 |
| HRC/ARC 20 | M3 | M3 | P4 |
| HRC/ARC/ERC 25 | M6 | M3 | P4 |
| HRC/ARC 30 | M6 | M6 | P5 |
| HRC/ARC 35 | M6 | M6 | P5 |
| HRC/ARC 45 | PT1/8 | M6 | P5 |
| HRC/ARC 55 | M6 | M6 | P5 |
| WRC 21/15 | M3 | M3 | P3 |
| WRC 27/20 | M3 | M3 | P4 |

General Data

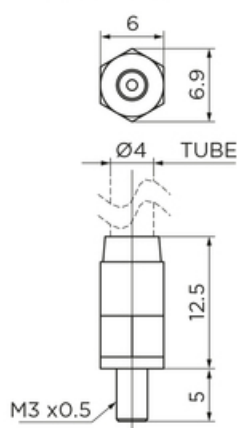
| Designation | Compatible with | Remark | Thread | Type |
|------------------|----------------------------|-----------------------------------|---------|--------|
| A-M3 | Block size 15 | - | M3x0.5 | Normal |
| A-M3-L | Block size 15 | For block with external seal (SN) | M3x0.5 | Normal |
| B-M3 | Block size 20 | - | M3x0.5 | Normal |
| B-M3-L | Block size 20 | For block with external seal (SN) | M3x0.5 | Long |
| A-M6 | Block size 25, 30, 35 & 55 | - | M6x0.75 | Normal |
| A-M6-L | Block size 25, 30, 35 & 55 | For block with external seal (SN) | M6x0.75 | Long |
| B-M6 | Block size 25, 30, 35 & 55 | - | M6x0.75 | Normal |
| B-M6-L | Block size 25, 30, 35 & 55 | For block with external seal (SN) | M6x0.75 | Long |
| B-PT1/8 | Block size 45 | - | PT 1/8 | Normal |
| B-PT1/8-L | Block size 45 | For block with external seal (SN) | PT 1/8 | Long |

Optional straight adapter

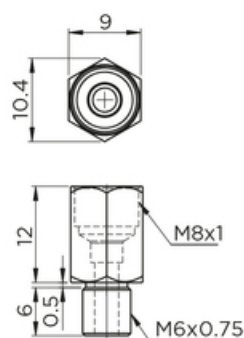
When external NBR seal is chosen (SN), please use long type straight adapter.



OA-M3-D4

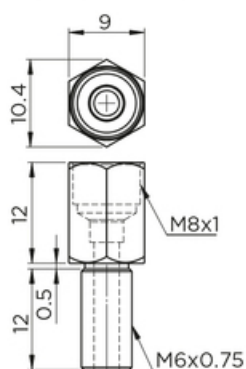


OA-M6-M8



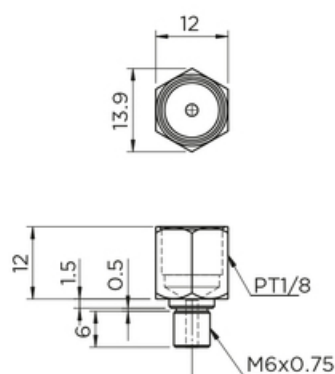
Ø 4 Oil hole grease injector available

OA-M6-M8-L



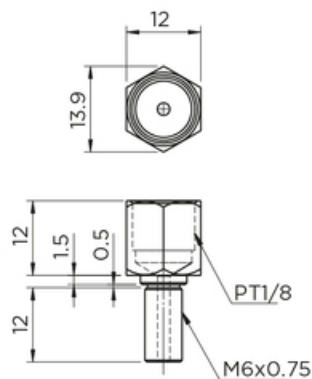
Ø 4 Oil hole grease injector available

OA-M6-PT1/8

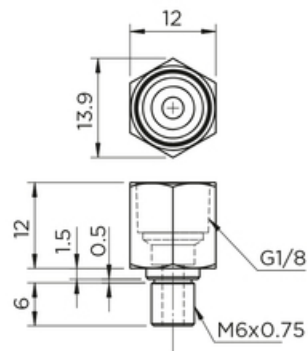


Optional straight adapter

OA-M6-PT1/8-L

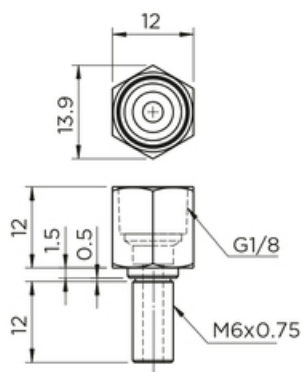


OA-M6-G1/8



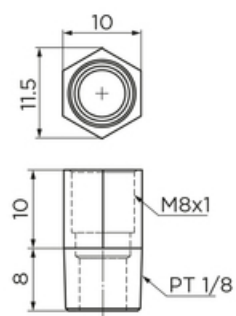
Ø 6 Oil hole grease injector available

OA-M6-G1/8-L



Ø 6 Oil hole grease injector available

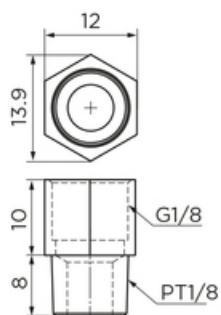
OA-PT1/8-M8



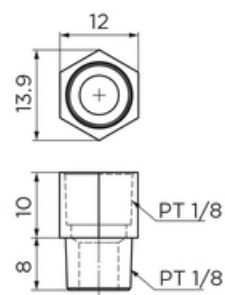
Ø 4 Oil hole grease injector available

Optional straight adapter

OA-PT1/8-G1/8



OA-PT1/8-PT1/8



Ø 6 Oil hole grease injector available

Port sizes for grease nipple

| Type | Port size | | Top o-ring size |
|----------------|-----------|------|-----------------|
| | Front | Side | |
| HRC/ARC 15 | M3 | M3 | P3 |
| HRC/ARC 20 | M3 | M3 | P4 |
| HRC/ARC/ERC 25 | M6 | M3 | P4 |
| HRC/ARC 30 | M6 | M6 | P5 |
| HRC/ARC 35 | M6 | M6 | P5 |
| HRC/ARC 45 | PT1/8 | M6 | P5 |
| HRC/ARC 55 | M6 | M6 | P5 |
| WRC 21/15 | M3 | M3 | P3 |
| WRC 27/20 | M3 | M3 | P4 |

General Data

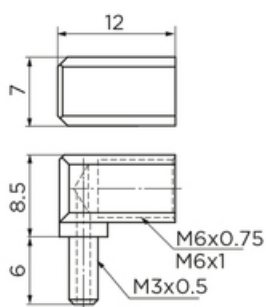
| Designation | Compatible with | Remark | Thread | Type |
|-----------------------|----------------------------|-----------------------------------|---------|--------|
| OA-M3-D4 | Block size 15 & 20 | - | M3x0.5 | Normal |
| OA-M6-M8 | Block size 25, 30, 35 & 55 | - | M6x0.75 | Normal |
| OA-M6-M8-L | Block size 25, 30, 35 & 55 | For block with external seal (SN) | M6x0.75 | Long |
| OA-M6-PT1/8 | Block size 30, 35 & 55 | - | M6x0.75 | Normal |
| OA-M6-PT1/8-L | Block size 30, 35 & 55 | For block with external seal (SN) | M6x0.75 | Long |
| OA-M6-G1/8 | Block size 30, 35 & 55 | - | M6x0.75 | Normal |
| OA-M6-G1/8-L | Block size 30, 35 & 55 | For block with external seal (SN) | M6x0.75 | Long |
| OA-PT1/8-M8 | Block size 45 | - | PT 1/8 | Normal |
| OA-PT1/8-PT1/8 | Block size 45 | - | PT 1/8 | Normal |
| OA-PT1/8-G1/8 | Block size 45 | - | PT 1/8 | Normal |

Optional L-type adapter

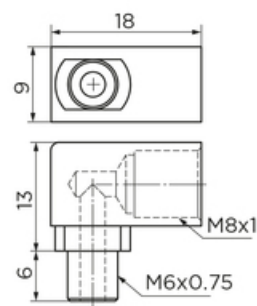
When external NBR seal is chosen (SN), please use long L-type adapter.



OB-M3-M6

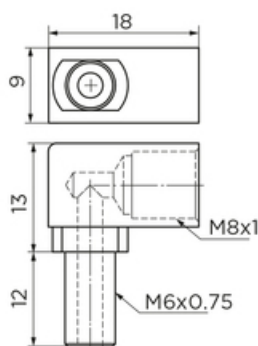


OB-M6-M8



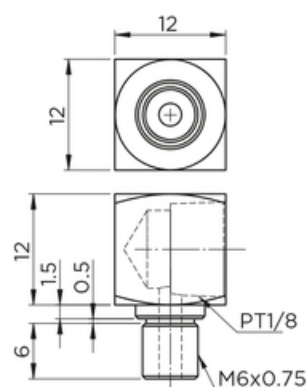
Ø 4 Oil hole grease injector available

OB-M6-M8-L



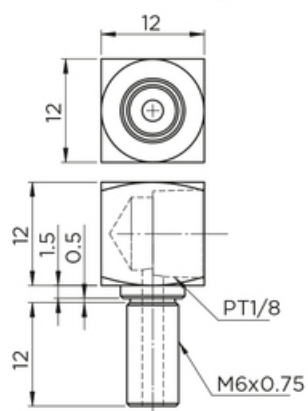
Ø 4 Oil hole grease injector available

OB-M6-PT1/8

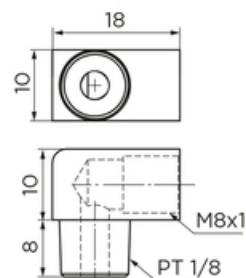


Optional L-type adapter

OB-M6-PT1/8- L

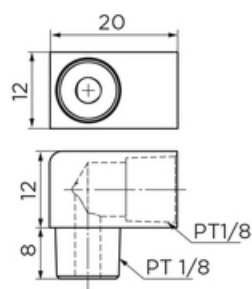


OB-PT1/8-M8



Ø 4 Oil hole grease injector available

OB-PT1/8-PT1/8



Port sizes for grease nipple

| Type | Port size | | Top o-ring size |
|----------------|-----------|------|-----------------|
| | Front | Side | |
| HRC/ARC 15 | M3 | M3 | P3 |
| HRC/ARC 20 | M3 | M3 | P4 |
| HRC/ARC/ERC 25 | M6 | M3 | P4 |
| HRC/ARC 30 | M6 | M6 | P5 |
| HRC/ARC 35 | M6 | M6 | P5 |
| HRC/ARC 45 | PT1/8 | M6 | P5 |
| HRC/ARC 55 | M6 | M6 | P5 |
| WRC 21/15 | M3 | M3 | P3 |
| WRC 27/20 | M3 | M3 | P4 |

General Data

| Designation | Compatible with | Remark | Thread | Type |
|-----------------------|----------------------------|-----------------------------------|---------|--------|
| OB-M3-M6 | Block size 15 & 20 | - | M3x0.5 | Normal |
| OB-M6-M8 | Block size 25, 30, 35 & 55 | - | M6x0.75 | Normal |
| OB-M6-M8-L | Block size 25, 30, 35 & 55 | For block with external seal (SN) | M6x0.75 | Long |
| OB-M6-PT1/8 | Block size 30, 35 & 55 | - | M6x0.75 | Normal |
| OB-M6-PT1/8- L | Block size 30, 35 & 55 | For block with external seal (SN) | M6x0.75 | Long |
| OB-PT1/8-M8 | Block size 45 | - | PT 1/8 | Normal |
| OB-PT1/8-PT1/8 | Block size 45 | - | PT 1/8 | Normal |